

THE Sherwood WATER QUALITY REPORT

The City of Sherwood consistently delivers water that meets or surpasses all federal and state standards. You can have confidence in the quality of your drinking water.

The City of Sherwood is proud to deliver water from the Willamette River Water Treatment Plant to the kitchen sinks of over 20,000 people every day. This report provides the information you need to know about the water you drink. Contaminant levels in your drinking water are well below state and federal regulatory limits.

Although the City's water supplies are tested for more than 200 regulated and unregulated contaminants, only those that have been detected in 2025 are included in this report. The test results are shown on the following pages.

We think it is important for our customers to understand where their water comes from, how safe it is, and what actions we take to ensure its continuing safety. If you have any questions about the contents of this report, or about something not included in this report, please contact the Public Works Water Operations Supervisor, Konrad Dimmitt, dimmittk@sherwoodoregon.gov or call 503.925.2334



Please share this information with anyone who drinks this water (or their guardians), especially those who may not have received this report directly (for example, people in apartments, nursing homes, schools, and businesses). You can do this by posting this report in a public place or distributing copies by hand, mail, email, or another method.

GET INVOLVED - JOIN THE CONVERSATION

The Sherwood City Council meets every first and third Tuesday at 7:00 p.m. at the Sherwood City Hall, 22560 SW Pine Street. With the exception of any scheduled Executive Session, the meetings are open to the public and residents are encouraged to attend.

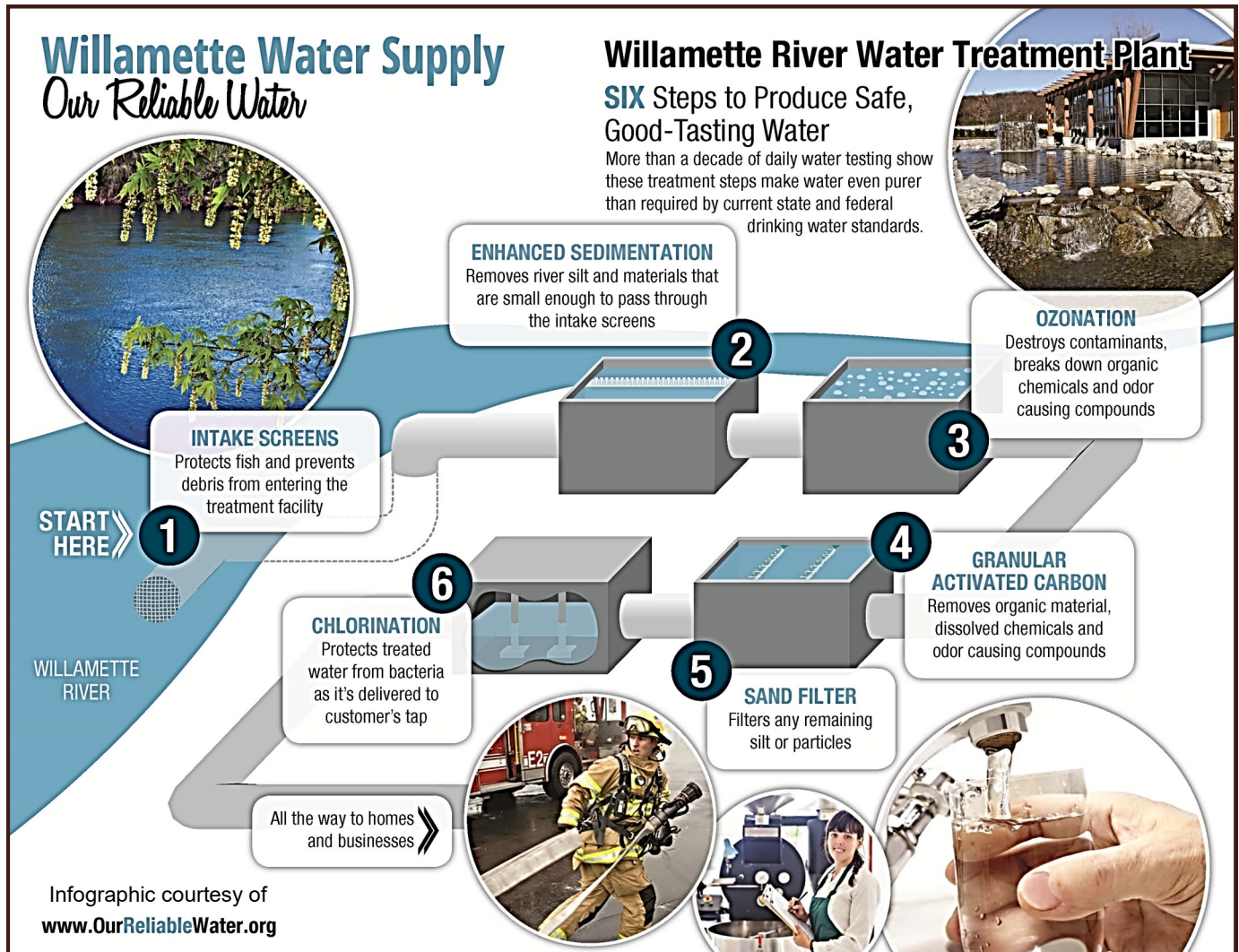


Find us online at your favorite social media site.



6 Steps to produce safe, good-tasting water

The city relies on the Willamette River Water Treatment Plant for its water supply. The plant utilizes a multi-barrier system, meaning that they treat the surface water extensively in many different ways, in order to produce water that exceeds the current and future drinking water standards. The WRWTP provides the City with an availability of 6.7 million gallons per day.



The city remains connected to Portland's Bull Run source and to the local ground water wells, which are available as emergency sources. Sherwood did not pull from these sources in 2025 and therefore they are not included in this report.

The Willamette River Water Treatment Plant offers tours to learn more about the process of making your water. Call Veolia Water at 503.582.9655 to schedule a visit.

In 2005, the Oregon Department of Human Services and Oregon Department of Environmental Quality conducted a source water assessment on the City of Sherwood's groundwater wells. Results indicate that the water system would be sensitive to a contamination event inside the identified Drinking Water Protection Area. Potential sources include high density housing areas, sewer lines and transportation corridors. This source assessment is available for review.

Water Quality Contaminants

The sources of drinking water (both tap water and bottled water) include rivers, lakes, streams, ponds, reservoirs, springs, and wells. As water travels over the surface of the land or through the ground, it dissolves naturally-occurring minerals and, in some cases, radioactive material, and can pick up substances resulting from the presence of animals or from human activity.

Contaminants that may be present in source water include;

- **Microbial contaminants**, such as viruses and bacteria, which may come from sewage treatment plants, septic systems, agricultural livestock operations, and wildlife.
- **Inorganic contaminants**, such as salts and metals, which can be naturally-occurring or result from urban stormwater runoff, industrial or domestic wastewater discharges, oil and gas production, mining, or farming.
- **Pesticides and herbicides**, which may come from a variety of sources such as agriculture, urban stormwater runoff, and residential uses.
- **Organic chemical contaminants**, including synthetic and volatile organic chemicals, which are byproducts of industrial processes and petroleum production, and can also come from gas stations, urban stormwater runoff, and septic systems.
- **Radioactive contaminants**, which can be naturally-occurring or be the result of oil and gas production and mining activities.

In order to ensure that tap water is safe to drink, EPA prescribes regulations which limit the amount of certain contaminants in water provided by public water systems. Food and Drug Administration regulations establish limits for contaminants in bottled water which must provide the same protection for public health.



Both tap and bottled water may reasonably be expected to contain at least small amounts of some contaminants. The presence of contaminants does not necessarily indicate that water poses a health risk. To ensure that tap water is safe, the federal Environmental Protection Agency (EPA) sets regulations that limit the amount of certain contaminants in water provided by public systems. The Food and Drug Administration (FDA) establishes similar limits for bottled water.

Some people may be more vulnerable to contaminants in drinking water than the general

EPA on Water Quality

populations. People who are immunocompromised, such as those with cancer undergoing chemotherapy, people who have undergone organ transplants, people with HIV/AIDS or other immune system disorders, some elderly people, and infants can be particularly at risk from infections. These people should seek advice about drinking water from their health care providers. EPA/CDC (Center for Disease Control) guidelines on appropriate means to lessen the risk of infection by cryptosporidium and other microbial contaminants are available from the EPA's Safe Drinking Water Hotline at 1 800-426-4791.

2025 Water Quality Data

If a health related contaminant is not listed in this report it was not detected.

INORGANIC CONTAMINANTS

Contaminant	Unit of Measure	Amt. Detected low - high	MCL	MCLG	Source
Nitrate-N	ppm	0.98	10	10	Runoff from fertilizer use; leaching from septic tanks and sewage; erosion of natural deposits

MICROBIOLOGICAL CONTAMINANTS

Contaminant	Frequency / Measure	Amt. Detected low - high	MCL	MCLG	Source
Total Coliform Bacteria \diamond	% in monthly samples	0 out of 240	1 per month	0	Naturally present in the environment
Fecal Coliform / E. Coli (Positive samples)	Monthly	ND	0.000	0.000	Human and animal waste
Turbidity \pm	NTU	0.001 - 0.09	< 0.3	NA	Soil runoff and sediments

\diamond Coliforms are bacteria that are naturally present in the environment and are used as an indicator that other, potentially harmful, water borne pathogens may be present or that a potential pathway exists through which contamination may enter the drinking water distribution system

\pm The typical cause of turbidity is sediment suspended in the water that can interfere with disinfection and provide a medium for microbial growth.

BYPRODUCT PRECURSORS AND DISINFECTANT RESIDUALS

Contaminant	Unit of Measure	Amt. Detected low - high	MRDL	MRDLG	Source
Bromate	ppb	1.0- 1.0	10	0	Byproduct of water disinfection
Chlorine	ppm	1.5 - 1.5	4	4	Water additive used to control microbes
Haloacetic Acids	ppb	5.7 - 17.8 Avg. 8.0	60	N/A	Byproduct of water disinfection
Total Organic Carbons	ppm	0.48 - 0.65 Avg. 0.57	TT	N/A	Naturally present in the environment
Total Trihalomethanes	ppb	12.2 - 21.4 Avg. 15.6	80	N/A	Byproduct of water disinfection

UNREGULATED CONTAMINANT

Routine sampling for unregulated contaminants detected a subclass of PFAS at 8 ppt and 41.3 ppt.

PFAS are a group of synthetic chemicals used in a wide range of consumer products and industrial applications including: non-stick cookware, water-repellent clothing, stain-resistant fabrics and carpets, cosmetics, firefighting foams, electroplating, and products that resist grease, water, and oil. PFAS are found in the blood of people and animals and in water, air, fish, and soil at locations across the United States and the world.

These results do not exceed a Maximum Contaminant Level as they are not regulated contaminants.

Unregulated contaminant monitoring rule (UCMR5) helps the U.S. Environmental Protection Agency determine where certain contaminants occur and whether the Agency should consider regulating those contaminants in the future.

LEAD AND COPPER

Contaminant	Amt. Detected low - high	AL	MCLG	90th Percentile	Sites Above AL
Copper	0 - 0.0991	1.3 ppm	1.3 ppm	0.036	0
Lead	0 - 0.013	15 ppb	0 ppb	0.0013	0

The values shown are the results of samples collected in September 2025. On a 3 year cycle the next round of testing will occur in the summer of 2028.

While there is no MCL for lead or copper, the federal government identifies an “action level” (AL) that triggers certain actions by the water provider. The action level is based on the 90th percentile. This means that 90 percent of the samples must be at or below the defined action level. The action level for copper is 1.3 ppm and the action level for lead is 15 ppb.

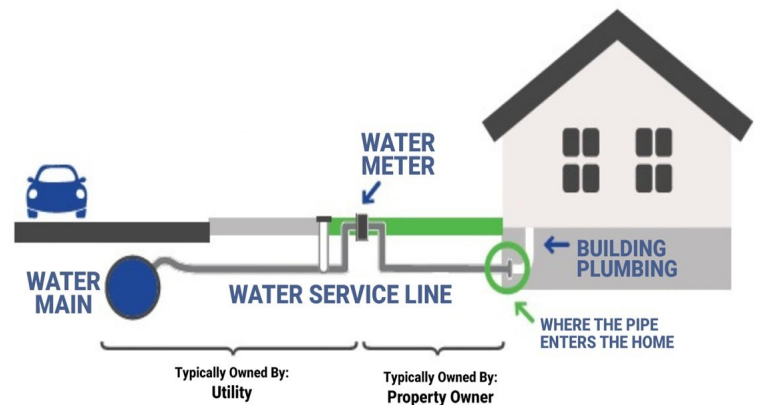
Lead can cause serious health problems, especially for pregnant women and young children. Lead in drinking water is primarily from materials and components associated with service lines and home plumbing. The City of Sherwood is responsible for providing high quality drinking water and removing lead pipes but cannot control the variety of materials used in plumbing components in your homes. You share the responsibility for protecting yourself and your family from the lead in your home plumbing. You can take responsibility by identifying and removing lead materials within your home plumbing and taking steps to reduce your family’s risk. Before drinking tap water, flush your pipes for several minutes by running your tap, taking a shower, doing laundry or a load of dishes. You can also use a filter certified by an American National Standards Institute accredited certifier to reduce lead in drinking water. If you are concerned about lead in your water and wish to have your water tested, contact the Public Works Department at 503.625.5722. Information on lead in drinking water, testing methods, and steps you can take to minimize exposure is available at <http://www.epa.gov/safewater/lead>.

Lead & Copper Service Line Inventory

In October of 2024, The City of Sherwood completed the initial Lead Service Line Inventory in accordance with EPA’s revised Lead and Copper Rule. The 2021 Revised Lead and Copper Rule requires that all Oregon state public water systems develop a complete inventory of all service line materials, including both public and private segments. The City of Sherwood is committed to complying with the EPA’s efforts to reduce exposure to lead through drinking water.

The Oregon Health Authority has concluded that service lines installed after 1985 are considered non-lead, since this is when the lead ban was enacted in Oregon. Per Oregon policy, if a water system has no current or historical records or knowledge of public lead service line use, a private galvanized line is classified as non-lead.

Based on statistical guidance from Oregon Health Authority, the City of Sherwood inspected over 300 private drinking water service lines



across the city to get a random, yet representative, sample of service lines built prior to 1986. The City found zero lead service lines in these inspections.

Statistically, remaining non-inspected service lines are likely made with a non-lead material, at 95% confidence level. Lead is not introduced through the treatment processes the City of Sherwood uses to keep your drinking water safe.

For additional information on the health effects of lead, please visit www.epa.gov/lead.

The City of Sherwood is a member of the RWPC, the Regional Water Providers Consortium. The Consortium provides leadership in the planning, management, stewardship, and resiliency of drinking water in the greater Portland metropolitan region.

Check out our how-to videos and other resources that show how to how to store, access, and treat drinking water in an emergency at regionalH2O.org/emergency-preparedness.

Resources are available in: English, Arabic, Chinese, Farsi, Hindi, Japanese, Karen, Khmer, Korean, Lao, Nepali, Somali, Spanish, Romanian, Russian, Thai, Ukrainian, and Vietnamese.



regionalH2O.org

Definitions

Action Level (AL): The concentration of a contaminant that, if exceeded, triggers a treatment or other requirements that a water system must follow.

Contaminant: Any physical, chemical, biological, or radiological substance or matter in water.

Herbicide: Any chemical(s) used to control undesirable vegetation.

Maximum Contaminant Level (MCL): The highest level of a contaminant that is allowed in drinking water. MCLs are set as close to the MCLGs as feasible using the best available treatment technology.

Maximum Contaminant Level Goal (MCLG): The level of contaminant in drinking water below which there is no known or expected risk to health. MCLGs allow for a margin of safety.

Maximum Residual Disinfectant Level (MRDL): The highest level of disinfectant allowed in drinking water. There is convincing evidence that addition of a disinfectant is necessary for control of microbial contaminants.

Maximum Residual Disinfectant Level Goal (MRDLG): The level of a drinking water disinfectant below which there is no known or expected risk to health. MRDLGs do not reflect the benefits of the use of disinfectants to control microbial contaminants.

Nephelometric Turbidity Units (NTU): a measure of turbidity.

No Detection (ND): In all of the tested samples there was no contaminant detected.

Parts per billion (ppb): 1 ppb means that one part of a particular contaminant is present for every 1 billion (1,000,000,000) parts of water. 1 ppb is equivalent to 1 inch in 16,000 miles, 1 second in 32 years and 1 cent in \$10 million dollars.

Parts per million (ppm): 1 ppm means that one part of a particular contaminant is present for every 1 million (1,000,000) parts of water. 1 ppm is equivalent to 1 inch in 16 miles, 1 minute in 2 years and 1 cent in \$10,000 dollars.

Pesticide: Generally, any substance or mixture of substances intended for preventing, destroying, repelling, or mitigating any pest.

Treatment Technique (TT): A required process intended to reduce the level of a contaminant in water.