



Home of the Tualatin River National Wildlife Refuge

City of Sherwood
22560 SW Pine St.
Sherwood, OR 97140
Tel 503-625-5522
Fax 503-625-5524
www.sherwoodoregon.gov

Mayor
Tim Rosener

Council President
Kim Young

Councilors
Renee Brouse
Taylor Giles
Doug Scott
Dan Standke
Keith Mays

City Manager
Craig Sheldon

Assistant City Manager
Kristen Switzer

August 1, 2025

**Re: Advanced Notice of Upcoming Street and Utility Improvements
SW Washington St (Tualatin to Division)**

Dear Homeowner/Resident,

The City uses a Pavement Management System which evaluates the condition of our roadways. This year, improvements on Washington St. include:

- Pavement rehabilitation between Tualatin St to Division St
- Sanitary sewer replacement between Willamette St to Division St
- Storm line extension between Tualatin St to Division St

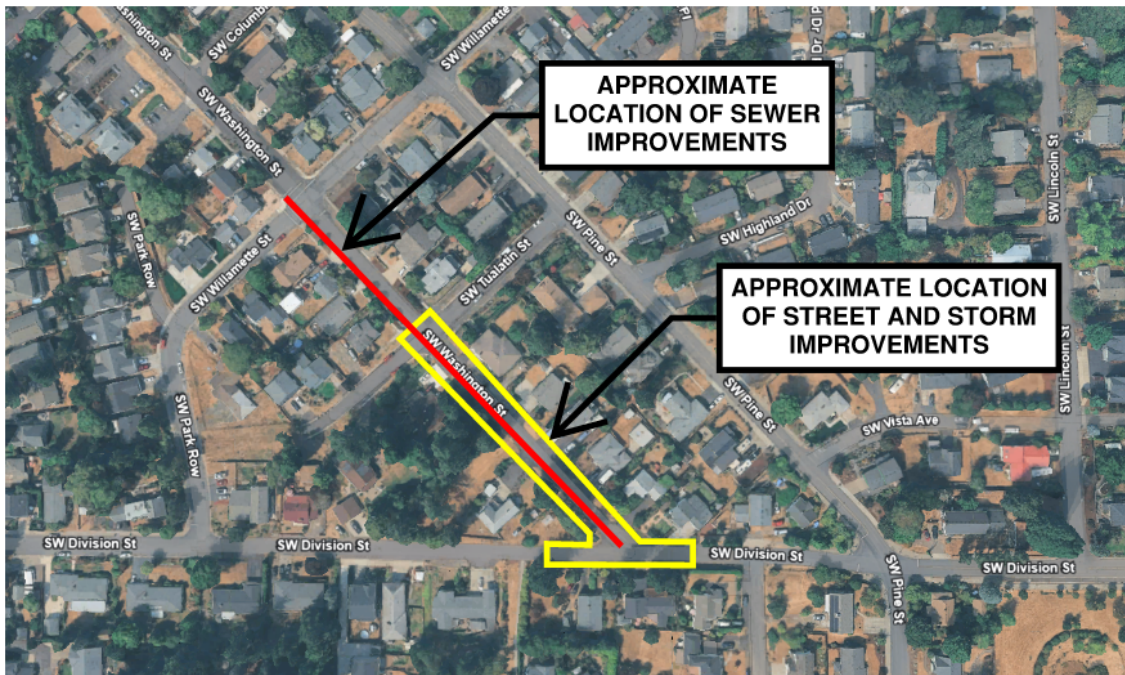
Design for these improvements is starting this Fall and we anticipate construction to begin in Spring 2026 with completion in Summer 2026.

Due to the nature of the work, please anticipate some access delays during construction. It will be part of the contractor's work to inform adjacent residents and businesses of the work schedule. The attached map shows the approximate limits of construction.

Please note that a future notice will be sent out with more details concerning this project.

We appreciate your patience during the construction period. Should you have any questions, please do not hesitate to contact Sofi Lam, P.E., at (503) 925-2303 or lams@sherwoodoregon.gov.

Washington St Street and Utility Improvements Project Area Map



Not to Scale