



Home of the Tualatin River National Wildlife Refuge

City of Sherwood
22560 SW Pine St.
Sherwood, OR 97140
Tel 503-625-5522
Fax 503-625-5524
www.sherwoodoregon.gov

Mayor
Tim Rosener

Council President
Kim Young

Councilors
Renee Brouse
Taylor Giles
Keith Mays
Doug Scott
Dan Standke

City Manager
Craig Sheldon

Assistant City Manager
Kristen Switzer

July 9, 2025

Re: Notice of Upcoming Crosswalk Safety Improvements at the Intersection of SW Sunset Boulevard/SW Timbrel Lane

Dear Homeowner/Resident,

The City of Sherwood's Public Works and Engineering Departments have completed the design and bidding process for crosswalk safety improvements at the intersection of SW Sunset Boulevard and SW Timbrel Lane. The planned improvements include enhanced ADA ramps, improved crosswalk markings, installation of a Pedestrian Hybrid Signal, installation of speed feedback signs, improved streetlights and removal of trees to improve visibility of the intersection and signal. Brown Contracting, Inc. has been selected to construct crosswalk safety improvements.

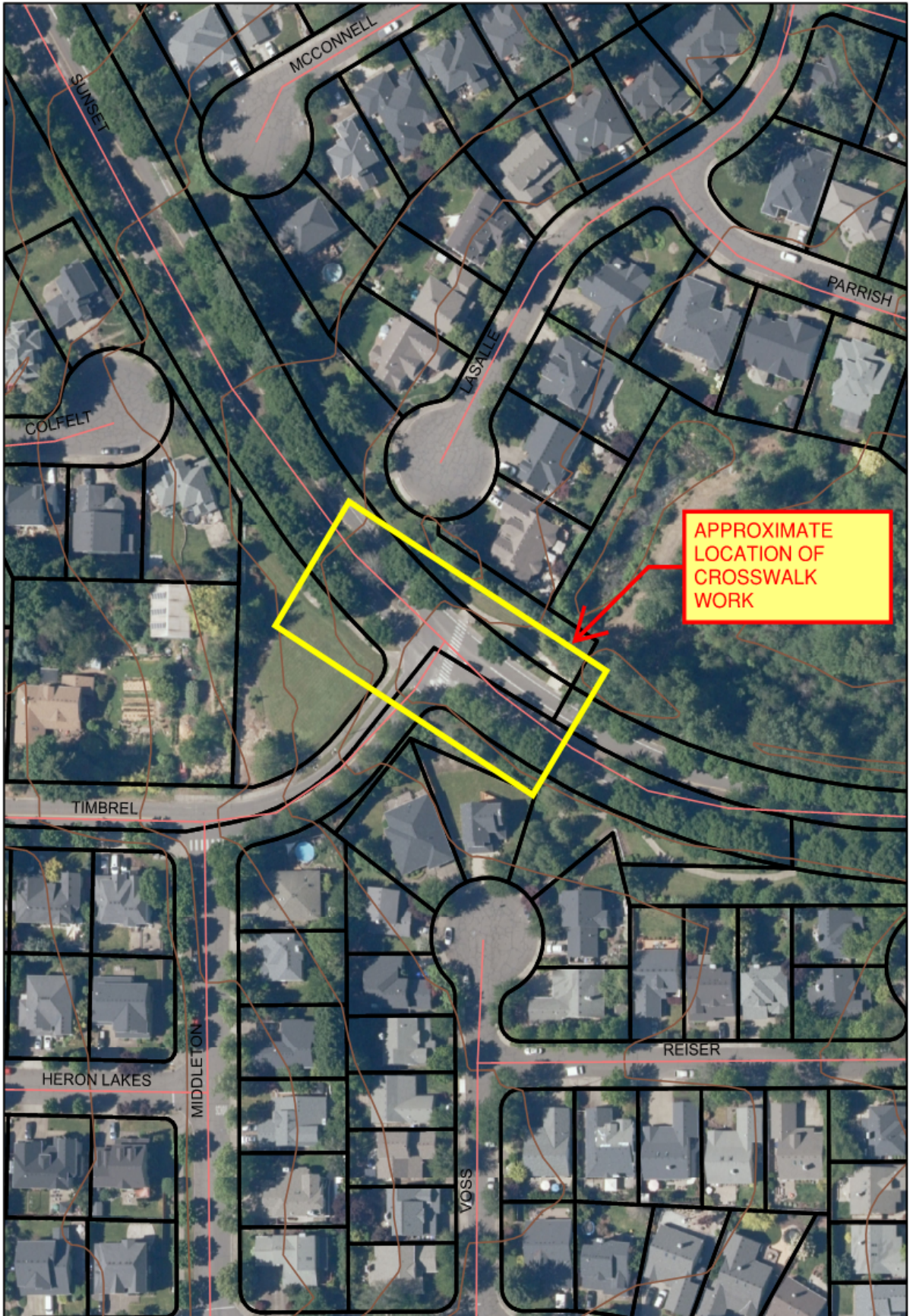
We anticipate the crosswalk improvements to begin July 14, 2025 with a majority of the work being completed during the summer of 2025. Due to long lead times of the signal poles, it is anticipated that the signal will be active in December 2025.

Please anticipate delays as one lane of SW Sunset Boulevard may be closed (via flaggers) to perform the construction work.

At times, sidewalks will be closed temporarily during curb ramp replacement. Consideration will be made to provide a temporary pedestrian route. On the reverse of this notice, please find attached a map which shows the approximate limits of construction.

If any immediate issues arise from the construction work, please contact Ryley McDowell (Brown Contracting, Inc.), at (541) 952-1864.

We appreciate your patience during the construction period. Should you have any questions, please do not hesitate to contact Craig Christensen, P.E., at (503) 925-2301 or christensenc@sherwoodoregon.gov.



APPROXIMATE
LOCATION OF
CROSSWALK
WORK