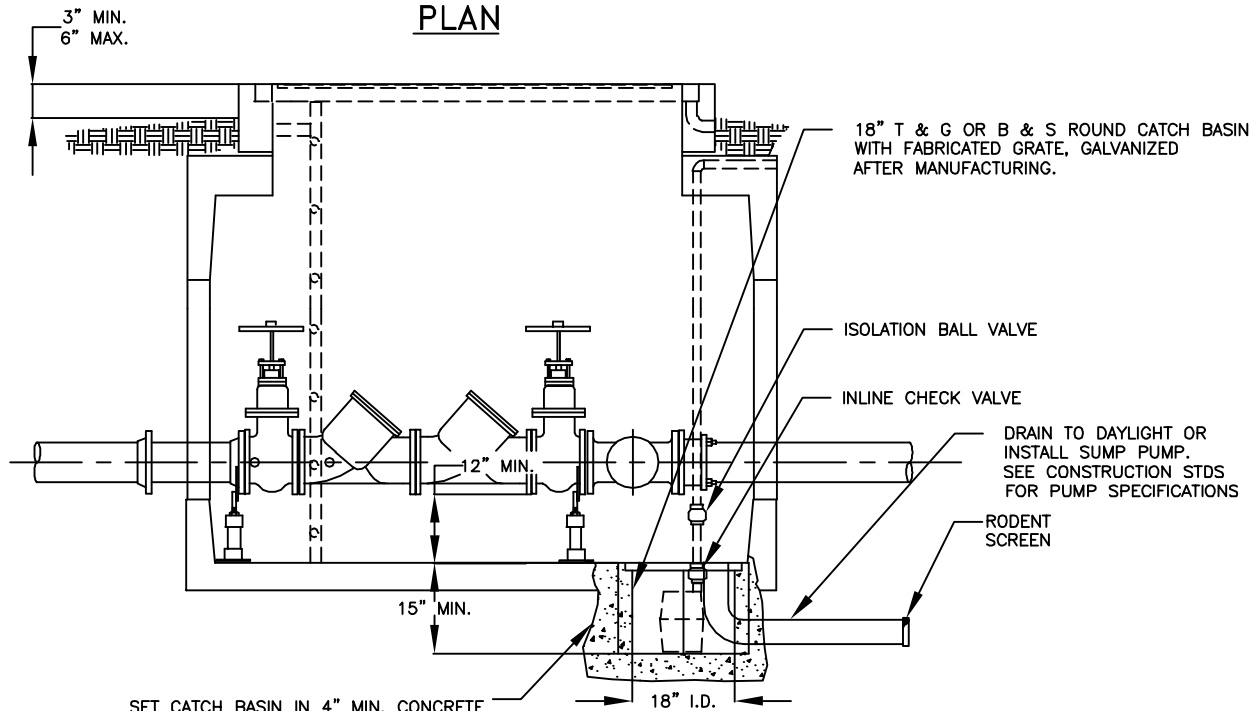


PLAN



SET CATCH BASIN IN 4" MIN. CONCRETE ALL AROUND SUMP. USE NON-SHRINK TOP 2" AT VAULT FLOOR. SET TOP OF CATCH BASIN GRATE 1/2" BELOW FLOOR FINAL GRADE.

PROFILE

NOTES:

1. SECURE POWER CORD TO SUMP PUMP DISCHARGE PIPING WITH NYLON CABLE TIES.
2. MANUFACTURE GRATE WITH CUTOUT NOTCH FOR DISCHARGE PIPING. GRATE SHALL BE REMOVABLE WITHOUT DISASSEMBLY OF DISCHARGE PIPING.
3. PROVIDE POWER SOURCE AS REQ'D FOR SUMP PUMP.



STANDARD DRAWING TITLE

SUMP PUMP INSTALLATION ALTERNATIVE 2

Any alteration of this drawing may not be associated in any way with the City of Sherwood Standard Drawings.

SCALE

N.T.S.

DRAWING NUMBER

W-44

DATE

JUL' 09