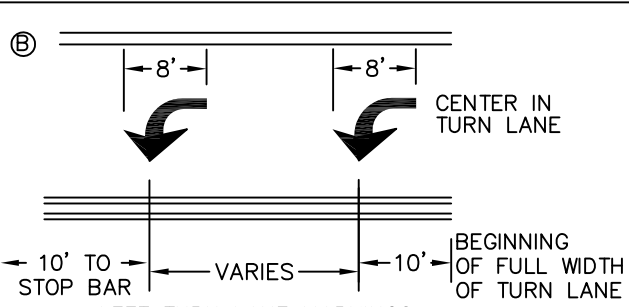
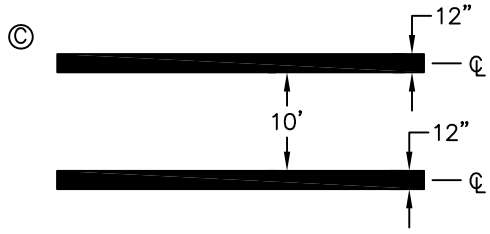


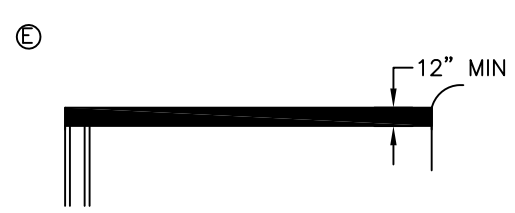
**RIGHT TURN LANE MARKINGS**  
SEE MUTCD FOR DETAILS. ARROWS SHALL BE THERMOPLASTIC PAVEMENT MARKING MATERIAL (SECTION 00850 - TYPE A)



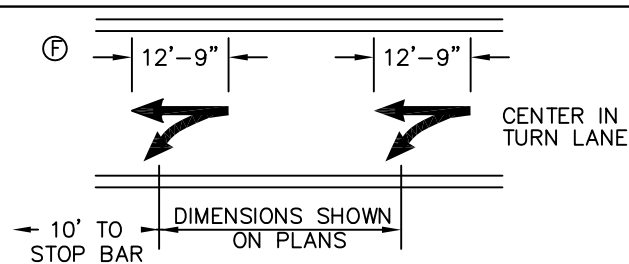
**LEFT TURN LANE MARKINGS**  
SEE MUTCD FOR DETAILS. ARROWS SHALL BE THERMOPLASTIC PAVEMENT MARKING MATERIAL (SECTION 00850 - TYPE A)



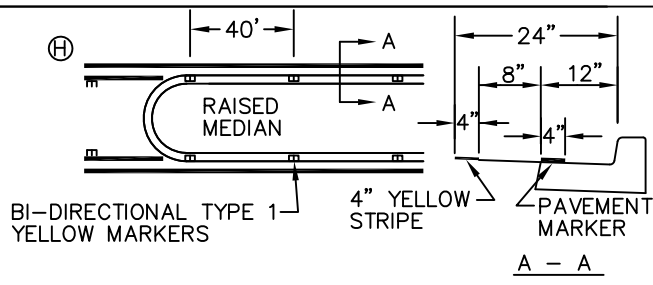
**CROSSWALK**  
SPACE TWO 12" WHITE LINES AS SHOWN ON PLANS. CROSSWALK SHALL BE THERMOPLASTIC PAVEMENT MARKING MATERIAL. (SECTION 00850 - TYPE A)



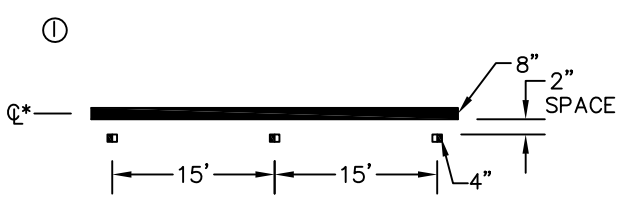
**STOP BAR**  
SHALL BE THERMOPLASTIC PAVEMENT MARKING MATERIAL. (SECTION 00850 - TYPE A)



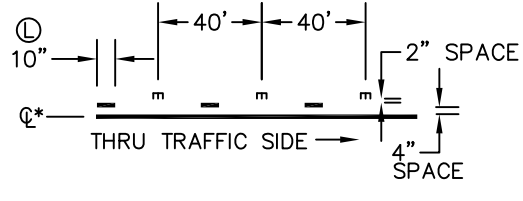
**THRU AND TURN LANE MARKINGS**  
SEE MUTCD FOR DETAILS. TURN AND THRU ARROWS SHALL BE THERMOPLASTIC PAVEMENT MARKING MATERIAL. (SECTION 00850 - TYPE A)



**RAISED MEDIAN STRIPE**  
4" YELLOW PAINTED LINE WITH TYPE 1 BI-DIRECTIONAL YELLOW RAISED PAVEMENT MARKERS



**TURN LANE LINE**  
8" WHITE THERMOPLASTIC LINE (SECTION 00862 METHOD B THERMOPLASTIC, NON-PROFILE, 90 MILS. EXTRUDED) WITH MONO-DIRECTIONAL CRYSTAL TYPE 1 MARKERS (WHITE)



**TWO WAY LEFT TURN STRIPE**  
4" YELLOW PAINTED LINE WITH TYPE 1 BI-DIRECTIONAL YELLOW RAISED PAVEMENT MARKERS. OUTSIDE LINE IS SOLID INSIDE AT 10'/30' PATTERN.

\* LANE MARKING DIMENSION LOCATION AT C OF STRIPING UNLESS NOTED OTHERWISE.  
SEE DRAWING NUMBER S-4 FOR STRIPING NOTES.

|  |  |        |                |
|--|--|--------|----------------|
|  | STANDARD DRAWING TITLE   |        | DRAWING NUMBER |
|  | STRIPING DETAILS   |        | S-3            |
|  | Any alteration of this drawing may not be associated in any way with the City of Sherwood Standard Drawings. | SCALE  | DATE           |
|  |  | N.T.S. | MAR '16        |