

KEYNOTES

- 3200.0 6'-0" WIDE X 4" THICK CONCRETE SIDEWALK OVER SUBBASE
 - 3200.1 5'-0" WIDE X 4" THICK CONCRETE SIDEWALK OVER SUBBASE
 - 3200.2 CONCRETE CURB OVER SUBBASE
 - 3200.8 4" THICK CONCRETE WALKWAY OVER SUBBASE
 - 3202.2 CONCRETE SEATWALL - ARCHITECTURAL GRADE FINISH
 - 3202.3 RETAINING WALL - REFER CIVIL DRAWINGS
 - 3204.1 ACCESSIBLE PARKING STALL & SYMBOL - 9' X 20' TYPICAL
 - 3204.2 ACCESSIBLE PARKING AISLE
 - 3207.0 DUMPSTER ENCLOSURE - REFER A5/AS101-S
 - 3209.0 LANDSCAPING -
 - 3210.7 4" HIGH WHEEL STOP - CONCRETE - LOCATED 3'-0" FROM FACE OF CURB.
- NOTE:
DEVELOPMENT RECEIVES THE RIGHT TO NOT USE WHEEL STOPS WITH PROVIDING THE FOLLOWING: REDUCE LENGTH OF STALLS BY 3'-0" AND PROVIDE ADDITIONAL LOW LANDSCAPING.
- 3220.0 POND
 - 3221.0 HEAVY DUTY CONCRETE RAMP
 - 3221.1 TRAILER STALLS / OUTDOOR STORAGE
 - 3221.2 TRUCK LOADING AND MANEUVERING AREA
 - 3222.0 BICYCLE PARKING AREA, ONE (1) 2-BICYCLE RACKS BY "HUNTCO" MODEL: THE RAMBLER (TOTAL OF 4 BICYCLE RACKS) - REFER A2/AS101-S

SITE PLAN LEGEND

- WAREHOUSE
- OFFICE
- LANDSCAPING - EXISTING
- LANDSCAPING
- ASPHALT - LIGHT DUTY
- ASPHALT - HEAVY DUTY
- CONCRETE - SIDEWALK
- CONCRETE - LIGHT DUTY
- CONCRETE - HEAVY DUTY
- PROPERTY LINE
- ACCESSIBLE PATH OF TRAVEL ROUTE
- DOCK DOORS (QTY: 58)
- DRIVE-IN DOORS (QTY: 4)
- CV CARPOOL/VANPOOL PARKING
- DIRECTION OF TRAFFIC FLOW

SITE ANALYSIS

SITE ANALYSIS CRITERIA:
SHERWOOD, OR
TITLE 16 - ZONING AND COMMUNITY DEVELOPMENT CODE

ZONING: EMPLOYMENT INDUSTRIAL (EI)

BUILDING AREA - TOTAL: 413,250 SF

LOT AREA: +/- 1,115,118 SF / 25.60 ACRE

FLOOR AREA RATIO (F.A.R.): BUILDING SF / LOT SF = 37%
ALLOWABLE F.A.R. = NO MAX.

PARKING - NEW OCCUPANCY

STANDARD STALLS:	PROVIDED:	245
	REQUIRED:	SEE CALCS.
ACCESSIBLE STALLS:	PROVIDED:	8
	REQUIRED:	8
TOTAL STALLS:	PROVIDED:	253
	REQUIRED:	SEE BELOW

PARKING - CARPOOL/VANPOOL

CARPOOL/VANPOOL STALLS:	PROVIDED:	13
-------------------------	-----------	----

PARKING - TRAILERS ONLY

TRAILER STALLS:	PROVIDED:	124
-----------------	-----------	-----

PARKING - BICYCLES

BICYCLE SPACES:	PROVIDED:	8
-----------------	-----------	---

PARKING CALCULATIONS - NEW OCCUPANCY

CHAPTER 16.94 - OFF-STREET PARKING AND LOADING
TABLE 1: 16.94.020 - MINIMUM AND MAXIMUM PARKING STANDARDS

WAREHOUSE USE	371,925 SF (90% TOTAL BUILDING AREA)
INDUSTRIAL USE	41,325 SF (10% TOTAL BUILDING AREA)
ACCESSORY OFFICE USE	(AREA TO BE DETERMINED)

WAREHOUSE USE

MIN. REQUIRED:	(371,925 SF / 1,000) X 0.3 = 112 STALLS
MAX. REQUIRED:	(371,925 SF / 1,000) X 0.5 = 186 STALLS

INDUSTRIAL USE

MIN. REQUIRED:	(41,325 SF / 1,000) X 1.6 = 67 STALLS
MAX. REQUIRED:	NONE

ACCESSORY OFFICE USE

PARKED AT SAME RATE OF THE ASSOCIATED USE

TOTAL MIN. REQUIRED:	179 STALLS
TOTAL MAX. REQUIRED:	NONE

BIKE PARKING CALCULATIONS - NEW OCCUPANCY

CHAPTER 16.94.020.C - BICYCLE PARKING FACILITIES
TABLE 4: 16.94.020.C - MINIMUM REQUIRED BICYCLE SPACES

INDUSTRIAL USE	2 OR 1-40 AUTO SPACES
----------------	-----------------------

REQUIRED AUTO STALLS / ZONING REQUIREMENT

253 / 40 = 7 RACK STALLS

TWINSTERS ARCHITECTURE
DENVER | IRVINE | LOS ANGELES | SAN JOSE | SEATTLE
www.twinstersarch.com info@twinstersarch.com

THESE DRAWINGS AND SPECIFICATIONS ARE THE PROPERTY OF TWINSTERS AND SHALL NOT BE USED FOR ANY OTHER WORK EXCEPT BY AGREEMENT WITH TWINSTERS.

PANATTONI
ROCK CREEK INDUSTRIAL

13700 SW TONQUIN RD.
SHERWOOD, OR 97140

ISSUED FOR SITE PLAN REVIEW 10/16/23

REV.	DATE	REMARKS

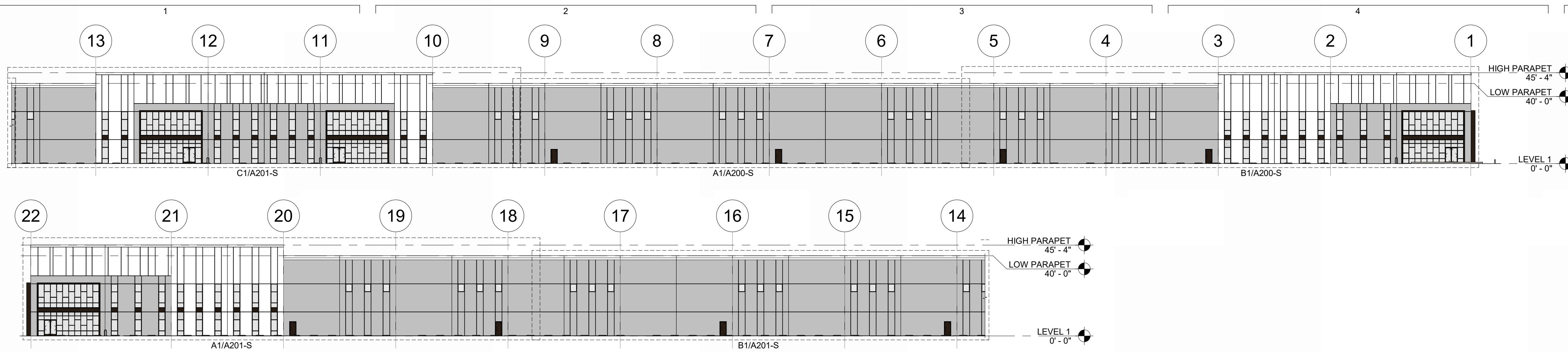
PANATTONI
1821 DOCK STREET, STE 100
TACOMA, WA 98402

ARCHITECTURAL SITE PLAN

DATE: 01/10/24

JOB NO.: 23-136

AS100-S



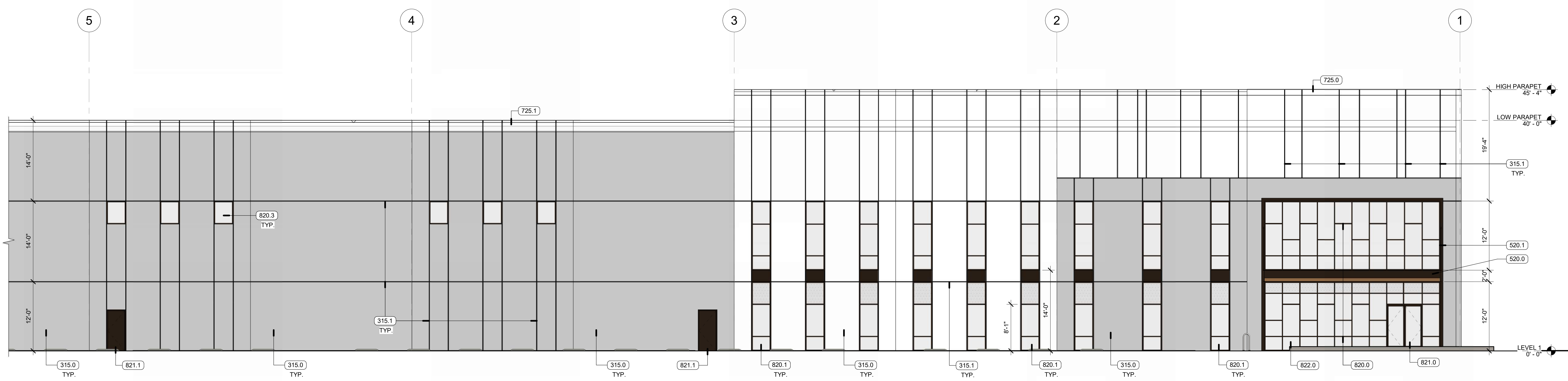
E1 NORTH ELEVATION - OVERALL -
SCALE: 1/32" = 1'-0"

PAINT LEGEND

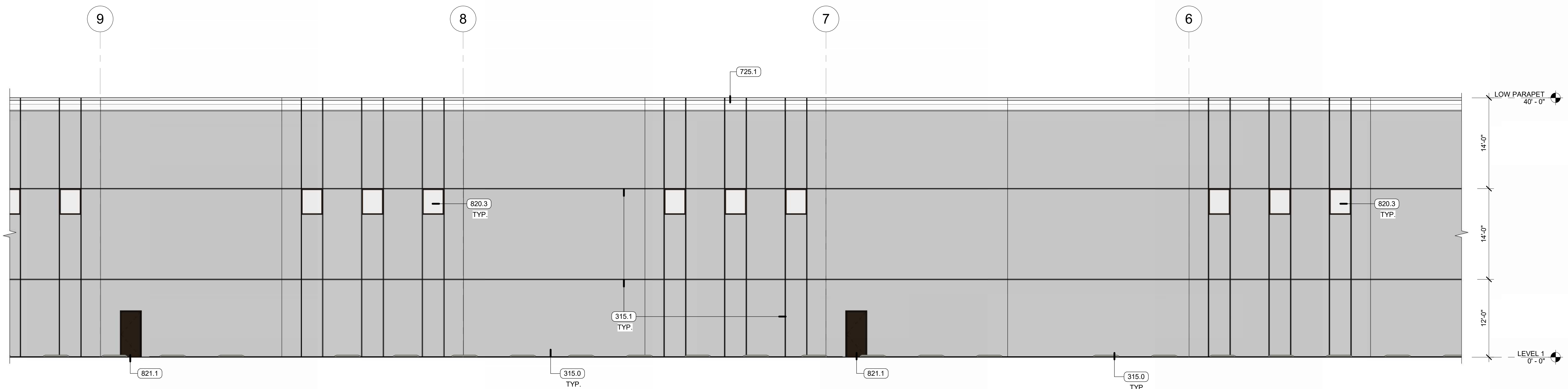
[White Box]	PAINT - WHITE
[Grey Box]	PAINT - GREY
[Dark Bronze Box]	PAINT - DARK BRONZE OR BLACK TO MATCH MULLIONS
[Dark Bronze Box]	STOREFRONT MULLION - DARK BRONZE OR BLACK

KEYNOTES

315.0	CONCRETE TILT-UP PANEL
315.1	3/4" WIDE "V" PROFILE REVEAL
520.0	METAL CANOPY WITH STEEL C-CHANNEL FRAME & WOOD PLANK SOFFIT
520.1	METAL CANOPY TIE-BACK ROD AND BRACKETS
725.0	PREFINISHED METAL PARAPET COPING - WHITE FINISH
725.1	PREFINISHED DUAL CLEAT METAL COPING OVER METAL STUD BUILT-UP PARAPET - WHITE FINISH
820.0	STOREFRONT - 24x 12 - KAWNEER, TRIFAB 451 - DARK BRONZE OR BLACK FACTORY FINISH
820.1	STOREFRONT - 3x 12 - KAWNEER, TRIFAB 451 - DARK BRONZE OR BLACK FACTORY FINISH
820.3	STOREFRONT - 3x 4 - KAWNEER, TRIFAB 451 - DARK BRONZE OR BLACK FACTORY FINISH
821.0	PAIR 3x 8 STOREFRONT ENTRY DOOR
821.1	HOLLOW METAL DOOR & FRAME - 3x 8' - DARK BRONZE OR BLACK FACTORY FINISH TO MATCH STOREFRONT
822.0	1" INSULATED GLAZING - CLEAR



B1 NORTH ELEVATION - 1
SCALE: 1/8" = 1'-0"



A1 NORTH ELEVATION - 2
SCALE: 1/8" = 1'-0"

PANATTONI
ROCK CREEK INDUSTRIAL

13700 SW TONQUIN RD.
SHERWOOD, OR 97140

ISSUED FOR SITE PLAN REVIEW 10/16/23

REMARKS

REV. DATE

PANATTONI
1821 DOCK STREET, STE 100
TACOMA, WA 98402

BUILDING ELEVATIONS

DATE: 01/10/24
JOB NO.: 23-136

A200-S

1/20/24 1:56:11 PM

KEYNOTES

- 315.0 CONCRETE TILT-UP PANEL
- 315.1 3/4" WIDE "V" PROFILE REVEAL
- 520.0 METAL CANOPY WITH STEEL C-CHANNEL FRAME & WOOD PLANK SOFFIT
- 520.1 METAL CANOPY TIE-BACK ROD AND BRACKETS
- 725.1 PREFINISHED DUAL CLEAT METAL COPING OVER METAL STUD BUILT-UP PARAPET - WHITE FINISH
- 820.0 STOREFRONT - 24x 12' - KAWNEER, TRIFAB 451 - DARK BRONZE OR BLACK FACTORY FINISH
- 820.1 STOREFRONT - 3x 12' - KAWNEER, TRIFAB 451 - DARK BRONZE OR BLACK FACTORY FINISH
- 820.3 STOREFRONT - 3x 4' - KAWNEER, TRIFAB 451 - DARK BRONZE OR BLACK FACTORY FINISH
- 821.0 PAIR 3x 8' STOREFRONT ENTRY DOOR
- 821.1 HOLLOW METAL DOOR & FRAME - 3x 8' - DARK BRONZE OR BLACK FACTORY FINISH TO MATCH STOREFRONT
- 822.0 1" INSULATED GLAZING - CLEAR

PAINT LEGEND

- PAINT - WHITE
- PAINT - GREY
- PAINT - DARK BRONZE OR BLACK TO MATCH MULLIONS
- STOREFRONT MULLION - DARK BRONZE OR BLACK

TWINSTERS ARCHITECTURE
 DENVER | IRVINE | LOS ANGELES | SAN JOSE | SEATTLE
 www.twinsters.com info@twinsters.com
 THESE DRAWINGS AND SPECIFICATIONS ARE THE PROPERTY OF TWINSTERS AND SHALL NOT BE USED FOR ANY OTHER WORK EXCEPT BY JOBSHIRT WITH TWINSTERS.

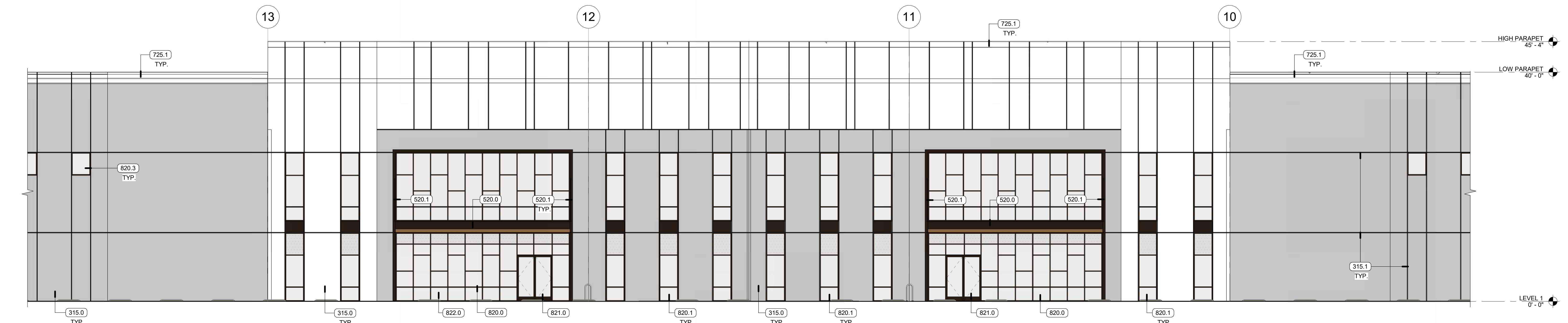
PANATTONI
ROCK CREEK INDUSTRIAL
 13700 SW TONQUIN RD.
 SHERWOOD, OR 97140
 ISSUED FOR SITE PLAN REVIEW 10/16/23

REV	DATE	REMARKS

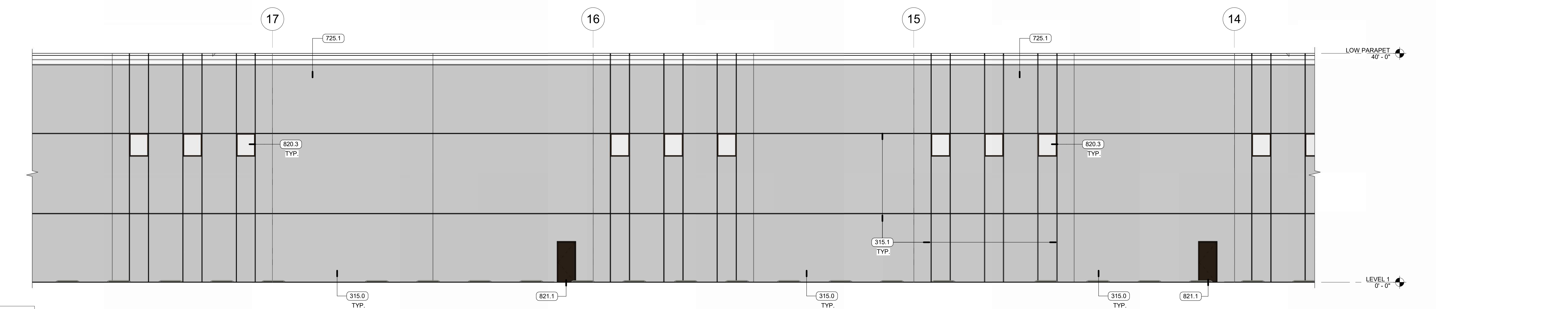
PANATTONI
 1821 DOCK STREET, STE 100
 TACOMA, WA 98402
BUILDING ELEVATIONS

DATE: 01/10/24
 JOB NO.: 23-136

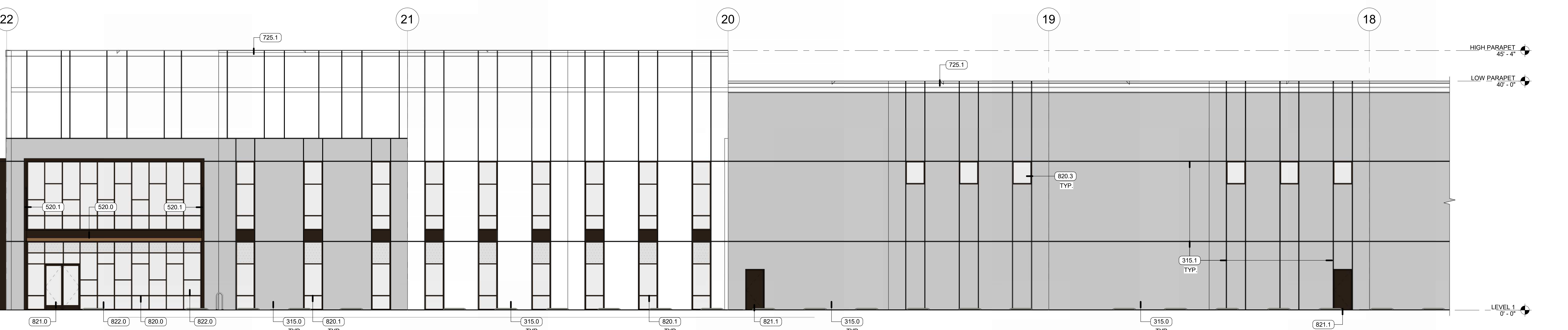
A201-S



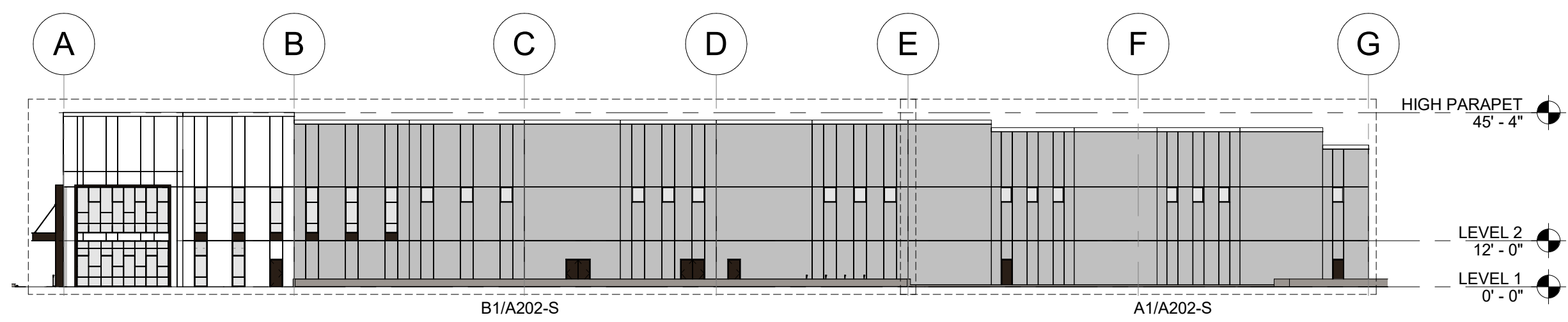
C1 NORTH ELEVATION - 3
SCALE: 1/8" = 1'-0"



B1 NORTH ELEVATION - 4
SCALE: 1/8" = 1'-0"



A1 NORTH ELEVATION - 5
SCALE: 1/8" = 1'-0"



E1 WEST ELEVATION - OVERALL

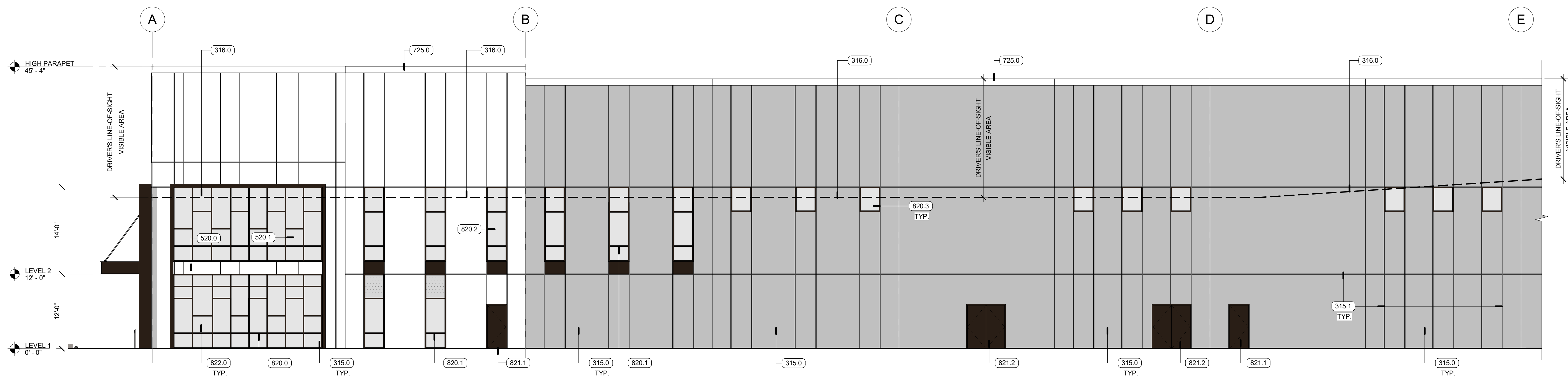
SCALE: 1/32" = 1'-0"

PAINT LEGEND

	PAINT - WHITE
	PAINT - GREY
	PAINT - DARK BRONZE OR BLACK TO MATCH MULLIONS
	STOREFRONT MULLION - DARK BRONZE OR BLACK

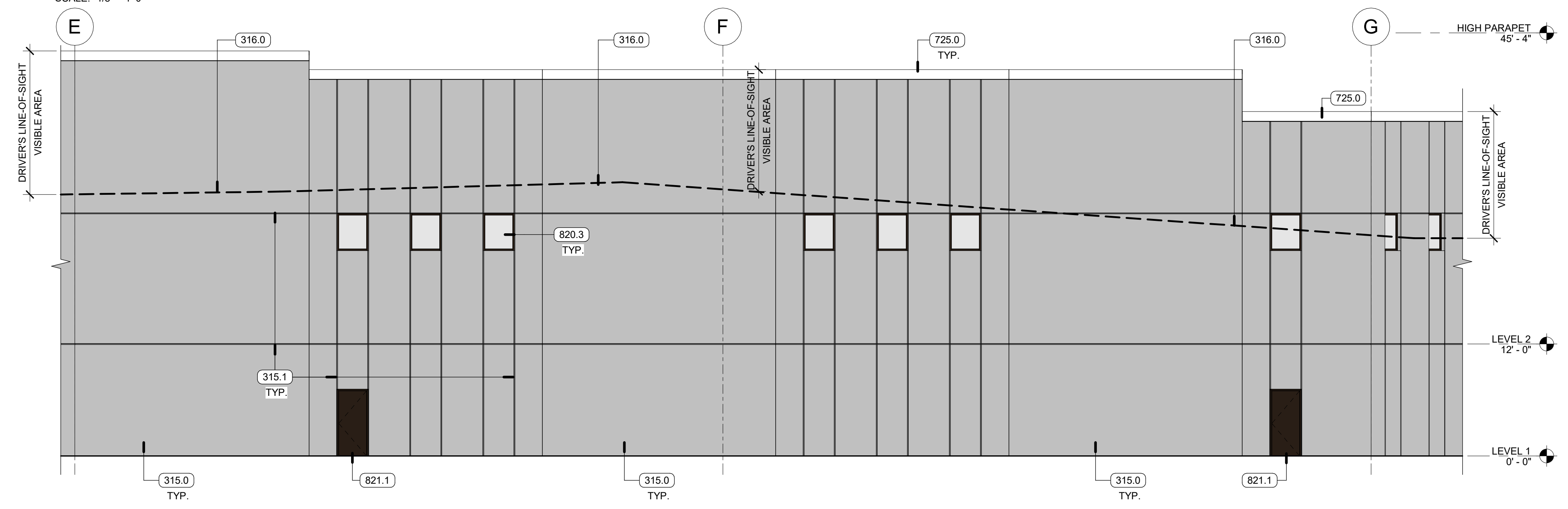
KEYNOTES

315.0	CONCRETE TILT-UP PANEL
315.1	3/4" WIDE "V" PROFILE REVEAL
316.0	DRIVERS LINE-OF-SIGHT VISIBILITY FROM TONQUIN ROAD BELOW - REFER CIVIL PLANS
520.0	METAL CANOPY WITH STEEL C-CHANNEL FRAME & WOOD PLANK SOFFIT
520.1	METAL CANOPY TIE-BACK ROD AND BRACKETS
725.0	PRE-FINISHED METAL PARAPET COPING - WHITE FINISH
820.0	STOREFRONT - 24x 12' - KAWNEER, TRIFAB 451 - DARK BRONZE OR BLACK FACTORY FINISH
820.1	STOREFRONT - 3x 12' - KAWNEER, TRIFAB 451 - DARK BRONZE OR BLACK FACTORY FINISH
820.2	STOREFRONT - 3x 12' - KAWNEER, TRIFAB 451 - DARK BRONZE OR BLACK FACTORY FINISH
820.3	STOREFRONT - 3x 4' - KAWNEER, TRIFAB 451 - DARK BRONZE OR BLACK FACTORY FINISH
821.1	HOLLOW METAL DOOR & FRAME - 3x 8' - DARK BRONZE OR BLACK FACTORY FINISH TO MATCH STOREFRONT
821.2	PAIR HOLLOW METAL DOOR & FRAME - 3x 8' - DARK BRONZE OR BLACK FACTORY FINISH TO MATCH STOREFRONT
822.0	1" INSULATED GLAZING - CLEAR



B1 WEST ELEVATION - 1

SCALE: 1/8" = 1'-0"



A1 WEST ELEVATION - 2 (ANGLED)

SCALE: 1/8" = 1'-0"

TWINSTERS ARCHITECTURE
 DENVER | IRVINE (LOS ANGELES) | SAN JOSE | SEATTLE
 www.twinsters.com info@twinsters.com
 THESE DRAWINGS AND SPECIFICATIONS ARE THE PROPERTY OF TWINSTERS AND SHALL NOT BE USED FOR ANY OTHER WORK EXCEPT BY JOBSHIRT WITH TWINSTERS

PANATTONI
ROCK CREEK INDUSTRIAL
 13700 SW TONQUIN RD.
 SHERWOOD, OR 97140
 ISSUED FOR SITE PLAN REVIEW 10/16/23

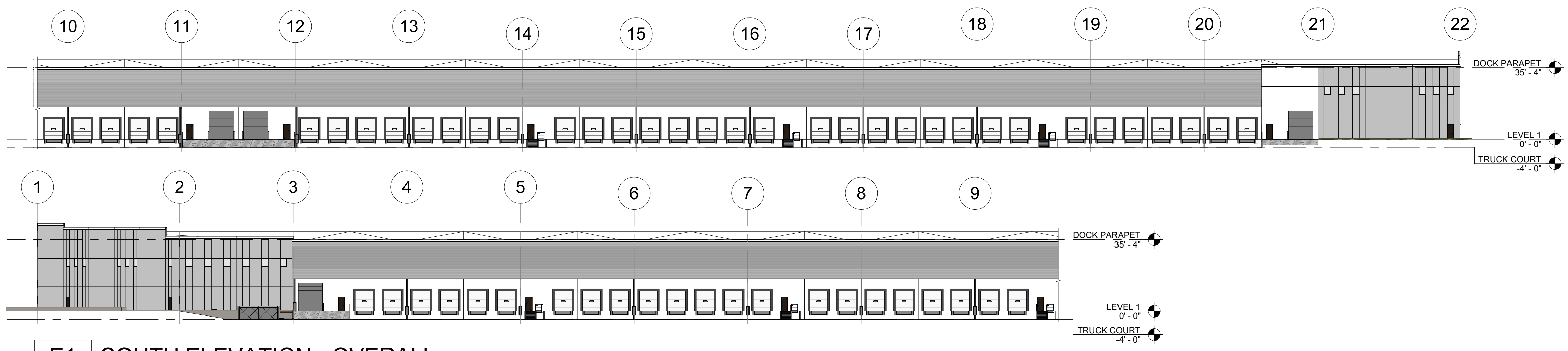
REV	DATE	REMARKS

PANATTONI
 1821 DOCK STREET, STE 100
 TACOMA, WA 98402

BUILDING ELEVATIONS

DATE:	01/10/24
JOB NO.:	23-136

A202-S



E1 SOUTH ELEVATION - OVERALL -
SCALE: 1/32" = 1'-0"

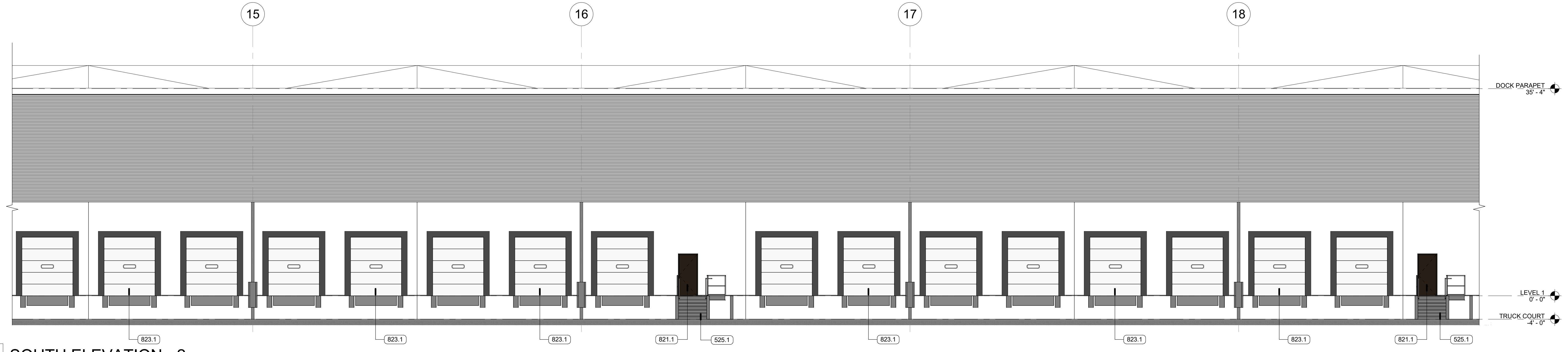
PAINT LEGEND

- PAINT - WHITE
- PAINT - GREY
- PAINT - DARK BRONZE OR BLACK TO MATCH MULLIONS
- STOREFRONT MULLION - DARK BRONZE OR BLACK

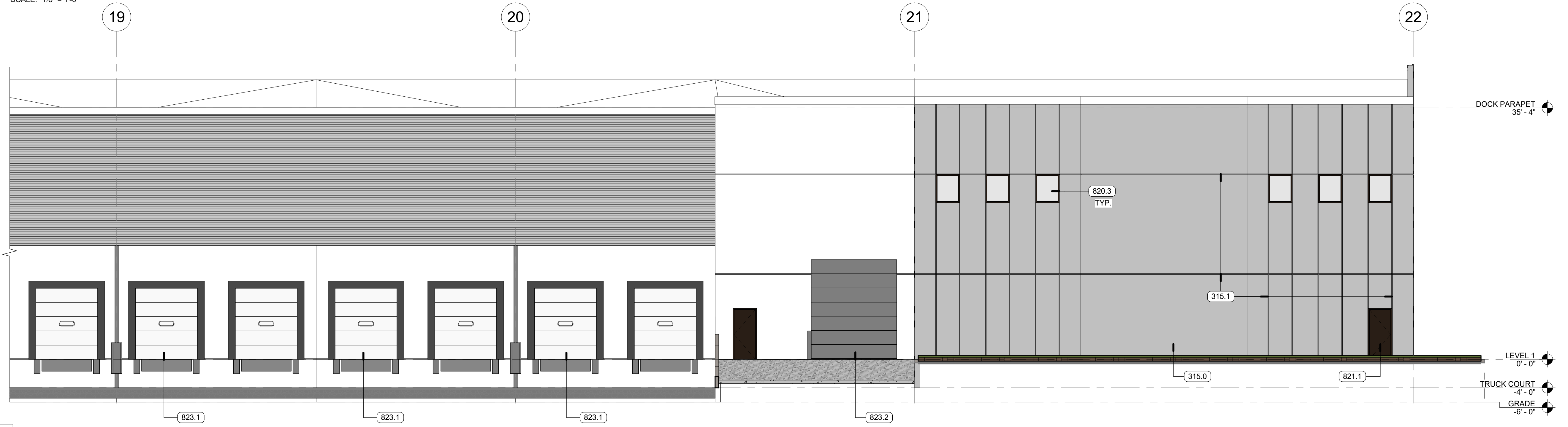
KEYNOTES

- 315.0 CONCRETE TILT-UP PANEL
- 315.1 3/4" WIDE "V" PROFILE REVEAL
- 525.1 STEEL STAIRS WITH STEEL GUARDRAIL AND HANDRAILS - PAINTED TO MATCH BUILDING COLOR
- 820.3 STOREFRONT - 3x 4' - KAWNEER, TRIFAB 451 - DARK BRONZE OR BLACK FACTORY FINISH
- 821.1 HOLLOW METAL DOOR & FRAME - 3x 8' - DARK BRONZE OR BLACK FACTORY FINISH TO MATCH STOREFRONT
- 823.1 OVERHEAD SECTIONAL DOCK HIGH DOOR
- 823.2 OVERHEAD SECTIONAL GRADE HIGH DOOR

TWINSTERS ARCHITECTURE
DENVER | IRVINE | LOS ANGELES | SAN JOSE | SEATTLE
www.twinsters.com info@twinsters.com
THESE DRAWINGS AND SPECIFICATIONS ARE THE PROPERTY OF TWINSTERS AND SHALL NOT BE USED FOR ANY OTHER WORK EXCEPT BY JOBSHIRT WITH TWINSTERS



B1 SOUTH ELEVATION - 2
SCALE: 1/8" = 1'-0"



A1 SOUTH ELEVATION - 1
SCALE: 1/8" = 1'-0"

PANATTONI
ROCK CREEK INDUSTRIAL
13700 SW TONQUIN RD.
SHERWOOD, OR 97140
ISSUED FOR SITE PLAN REVIEW 10/16/23

REV	DATE	REMARKS

PANATTONI
1821 DOCK STREET, STE 100
TACOMA, WA 98402
BUILDING ELEVATIONS

DATE: 01/10/24
JOB NO.: 23-136

A204-S

KEYNOTES

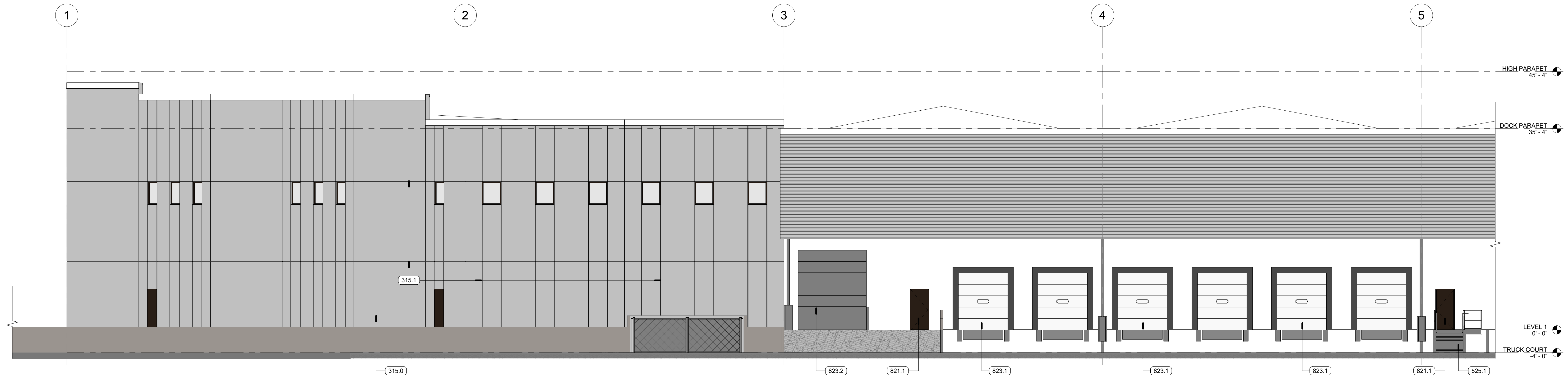
- 315.0 CONCRETE TILT-UP PANEL
- 315.1 3/4" WIDE "V" PROFILE REVEAL
- 525.1 STEEL STAIRS WITH STEEL GUARDRAIL AND HANDRAILS - PAINTED TO MATCH BUILDING COLOR
- 821.1 HOLLOW METAL DOOR & FRAME - 3x 8' - DARK BRONZE OR BLACK FACTORY FINISH TO MATCH STOREFRONT
- 823.1 OVERHEAD SECTIONAL DOCK HIGH DOOR
- 823.2 OVERHEAD SECTIONAL GRADE HIGH DOOR

PAINT LEGEND

- PAINT - WHITE
- PAINT - GREY
- PAINT - DARK BRONZE OR BLACK TO MATCH MULLIONS
- STOREFRONT MULLION - DARK BRONZE OR BLACK

TWINSTERS ARCHITECTURE
DENVER | IRVINE | LOS ANGELES | SAN JOSE | SEATTLE
www.twinsters.com info@twinsters.com

THESE DRAWINGS AND SPECIFICATIONS ARE THE PROPERTY OF TWINSTERS AND SHALL NOT BE USED FOR ANY OTHER WORK EXCEPT BY AGREEMENT WITH TWINSTERS.



C1 SOUTH ELEVATION - 5
SCALE: 1/8" = 1'-0"



B1 SOUTH ELEVATION - 4
SCALE: 1/8" = 1'-0"



A1 SOUTH ELEVATION - 3
SCALE: 1/8" = 1'-0"

PANATTONI
ROCK CREEK INDUSTRIAL
13700 SW TONQUIN RD.
SHERWOOD, OR 97140
ISSUED FOR SITE PLAN REVIEW 10/16/23

REV	DATE	REMARKS

PANATTONI
1821 DOCK STREET, STE 100
TACOMA, WA 98402

BUILDING ELEVATIONS

DATE: 01/10/24
JOB NO.: 23-136

A205-S