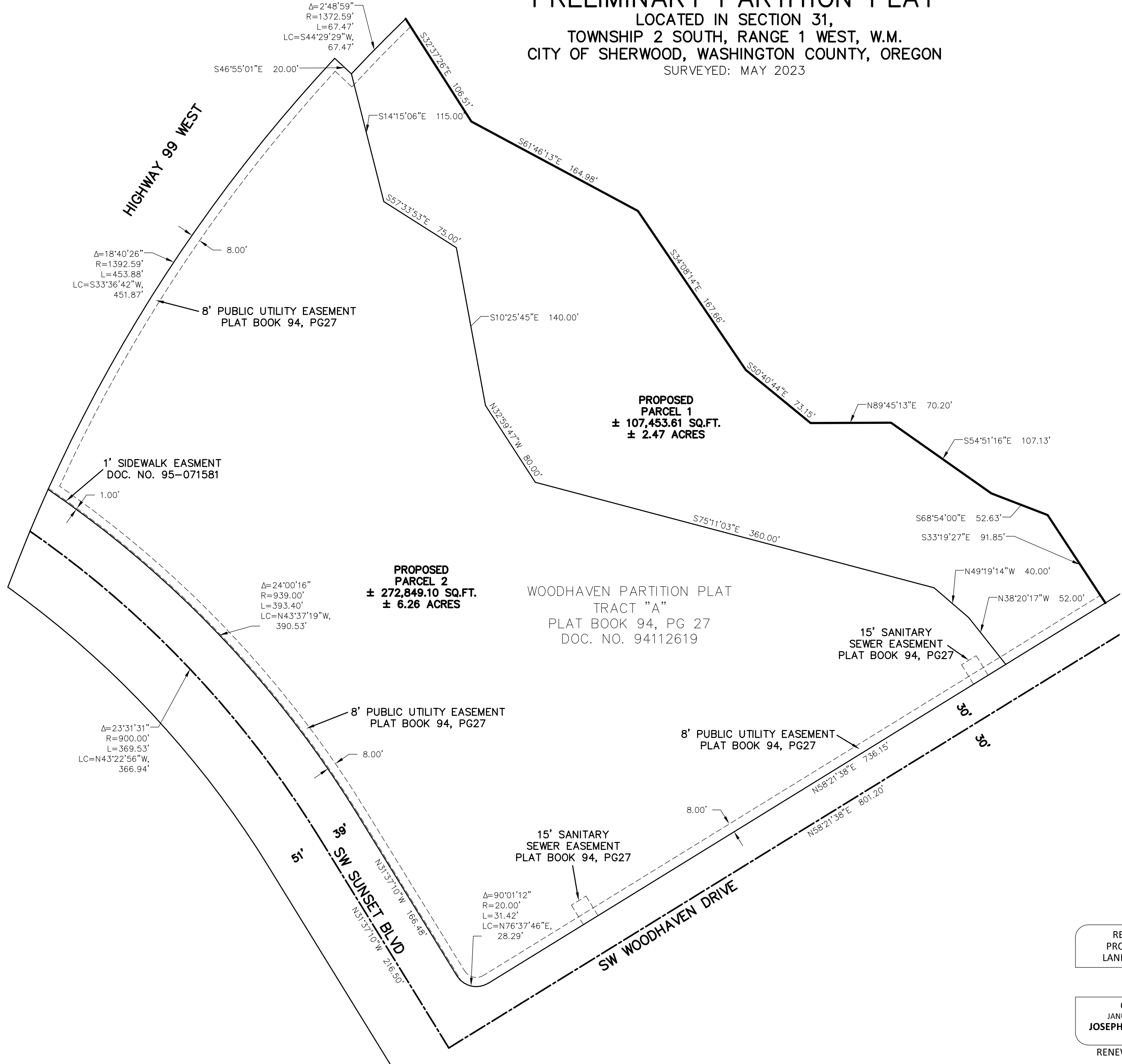
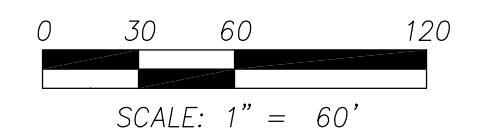
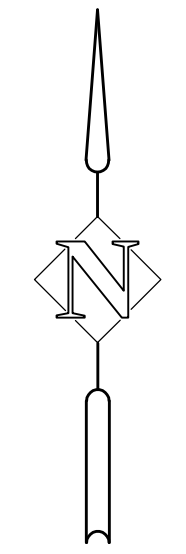


PRELIMINARY PARTITION PLAT
 LOCATED IN SECTION 31,
 TOWNSHIP 2 SOUTH, RANGE 1 WEST, W.M.
 CITY OF SHERWOOD, WASHINGTON COUNTY, OREGON
 SURVEYED: MAY 2023

WASHINGTON COUNTY SURVEYORS OFFICE
 ACCEPTED FOR FILING: _____



REGISTERED
 PROFESSIONAL
 LAND SURVEYOR

OREGON
 JANUARY 14, 2003
JOSEPH W. HURLIMAN
 58960

RENEWS: 6-30-2025

Harper
HHPR Houf Peterson
Righellis Inc.

ENGINEERS • PLANNERS
 LANDSCAPE ARCHITECTS • SURVEYORS
 205 SE Spokane Street Suite 200 Portland, OR 97202
 phone: 503.221.1131 www.hhpr.com fax: 503.221.1171