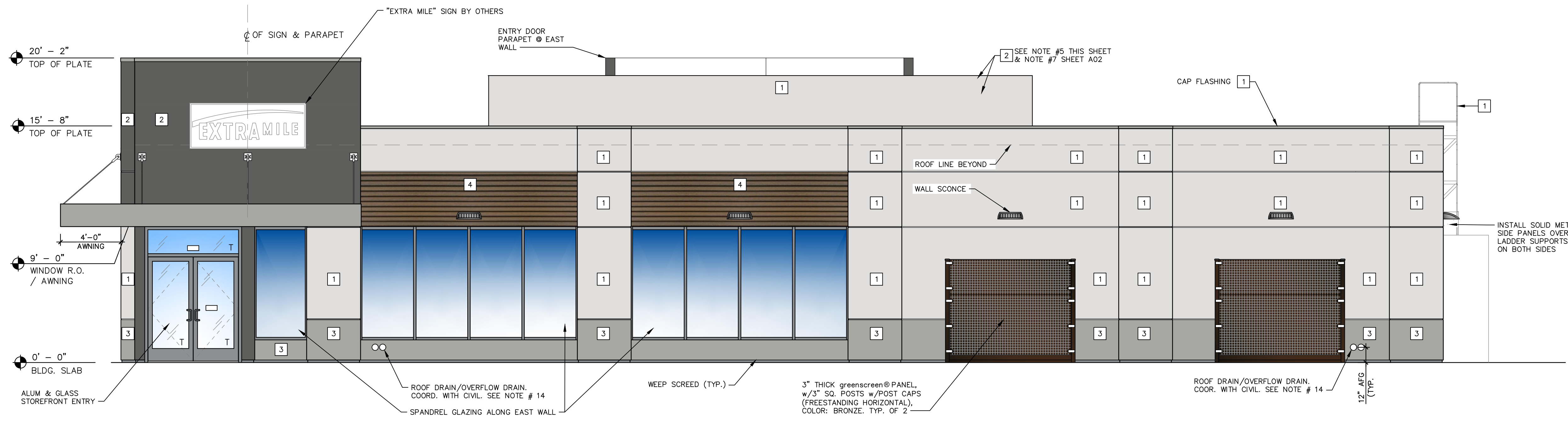


EAST ELEVATION - FACING FUEL ISLANDS
SCALE: 1/4"=1'-0"



WEST ELEVATION - FACING SW SHERWOOD BLVD
SCALE: 1/4"=1'-0"

DECAL LEGEND

DECAL#	DESCRIPTION
--------	-------------

NOTE: DECAL TYPE AND PLACEMENT SHALL COMPLY WITH THE LATEST VERSION OF CHEVRON HALLMARK 20/20 IMAGE GUIDELINES, SECTION 15, BACKCOURT BUILDING ENTRY DOOR DECALS.

COLOR LEGEND

MARK	DESCRIPTION	PPG
1	SHADED WHISPER (URETHANE SEMI GLOSS)	PPG0995-1
2	SUMMER SHADOW (EXT. SUPERPAINT FLAT)	PPG0996-7
3	STATUE GARDEN (URETHANE SEMI GLOSS)	PPG0996-3
4	BELGIAN BOARD (NEW TECH WOOD)- PERUVIAN TEAK 7.7" x 1"	

T = TEMPERED GLASS

No.	Date	By	Clk.	Appr.	Revision
1	6.30.23	CJP			REVISED EAST & NORTH ELEVATIONS, UPDATED WEST & SOUTH

Location:
STORE NO. 92138
EM3220 w/ (6) MPD'S
21090 SW PACIFIC HIGHWAY
SHERWOOD, OREGON

Preparer:
Barghausen Consulting Engineers, Inc.
18215 72nd Avenue South
Kent, WA 98032
425.251.6222
barghausen.com

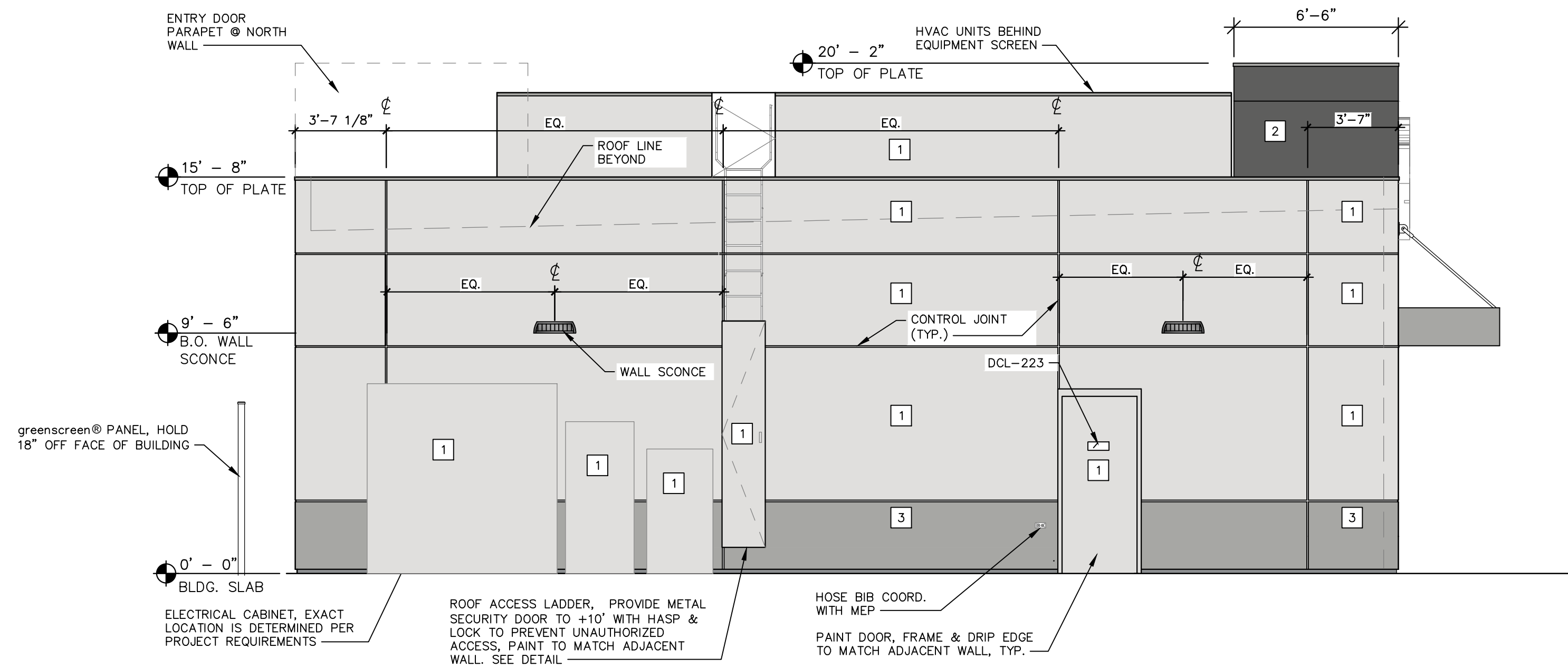
Client:
Chevron
CHEVRON U.S.A. INC.
6001 BOLLINGER CANYON RD.
SAN RAMON, CA 94583
ph 925.842.1000
www.Chevron.com

DESIGNED BY: CJP	DRAWN BY: AD
CHECKED BY:	APPROVED BY:
SCALE:	PROJECT NO: 22558

PRELIMINARY ELEVATIONS

SHEET NO:
A03

PAGE NUMBER: ___ of Tot Page



SOUTH ELEVATION - FACING EXIST. CAR WASH
SCALE: 1/4"=1'-0"



NORTH ELEVATION - FACING SW PACIFIC HIGHWAY
SCALE: 1/4"=1'-0"

DECAL LEGEND

DECAL#	DESCRIPTION
--------	-------------

NOTE: DECAL TYPE AND PLACEMENT SHALL COMPLY WITH THE LATEST VERSION OF CHEVRON HALLMARK 20/20 IMAGE GUIDELINES, SECTION 15, BACKCOURT BUILDING ENTRY DOOR DECALS.

COLOR LEGEND

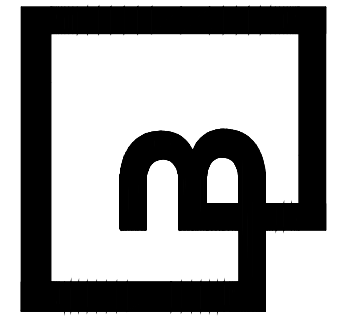
MARK	DESCRIPTION	PPG
1	SHADED WHISPER (URETHANE SEMI GLOSS)	PPG0995-1
2	SUMMER SHADOW (EXT. SUPERPAINT FLAT)	PPG0996-7
3	STATUE GARDEN (URETHANE SEMI GLOSS)	PPG0996-3
4	BELGIAN BOARD (NEW TECH WOOD)- PERUVIAN TEAK 7.7" x 1"	

T = TEMPERED GLASS

No.	Date	By	Clad.	Appr.	Revision
1	6.30.23	cjp			REVISED EAST & NORTH ELEVATIONS, UPDATED WEST & SOUTH

Location:
STORE NO. 92138
EM3220 w/ (6) MPD'S
21090 SW PACIFIC HIGHWAY
SHERWOOD, OREGON

Preparer:
Barghausen Consulting Engineers, Inc.
18215 72nd Avenue South
Kent, WA 98032
425.251.6222
barghausen.com



PRELIMINARY

Client:
Chevron
CHEVRON U.S.A. INC.
6001 BOLLINGER CANYON RD.
SAN RAMON, CA 94583
ph 925.842.1000 www.Chevron.com

DESIGNED BY: CJP	DRAWN BY: AD
CHECKED BY:	APPROVED BY:
SCALE:	PROJECT NO: 22558

PRELIMINARY ELEVATIONS

SHEET NO:

A03.1

PAGE NUMBER: ___ of Tot Page