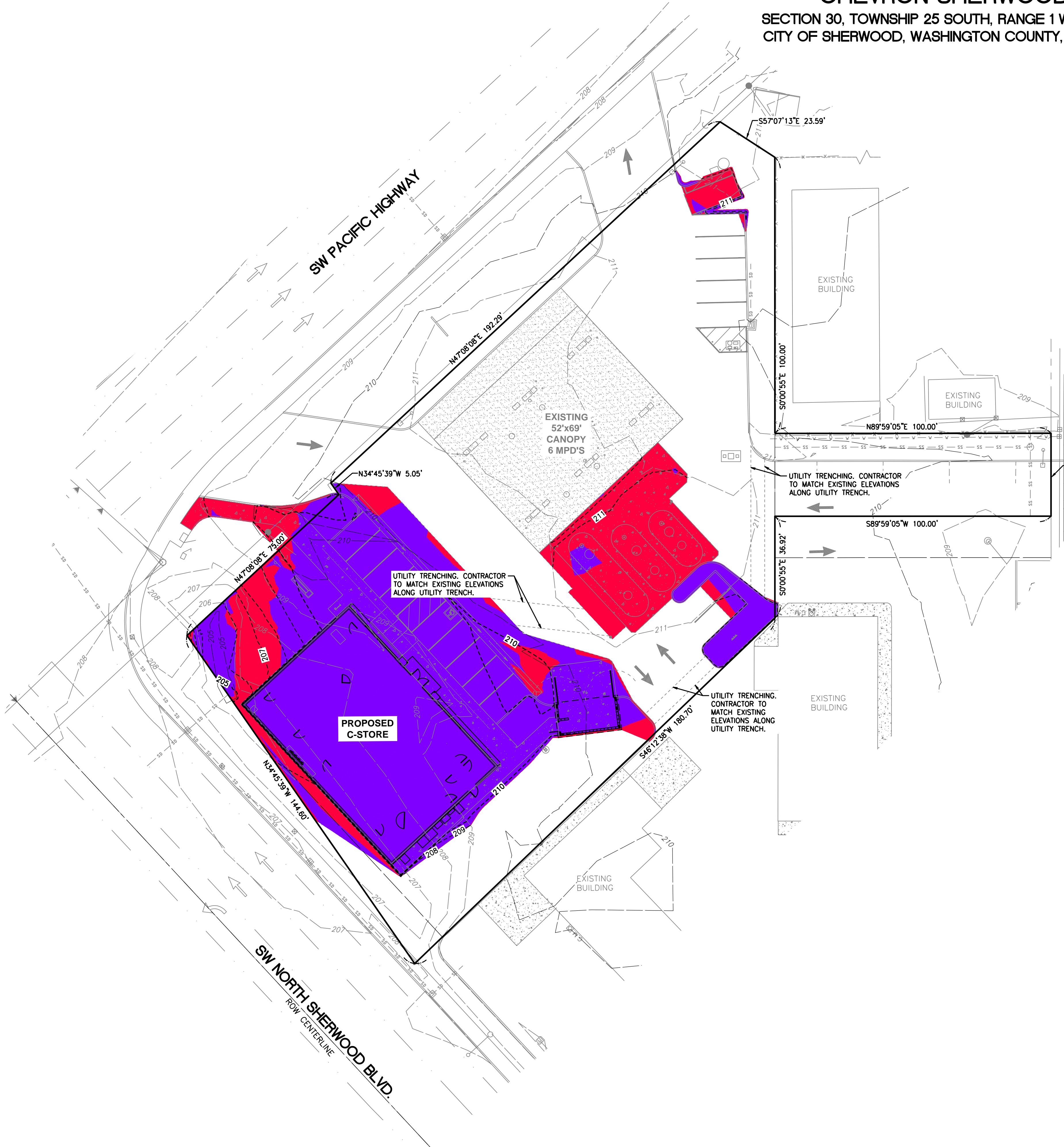
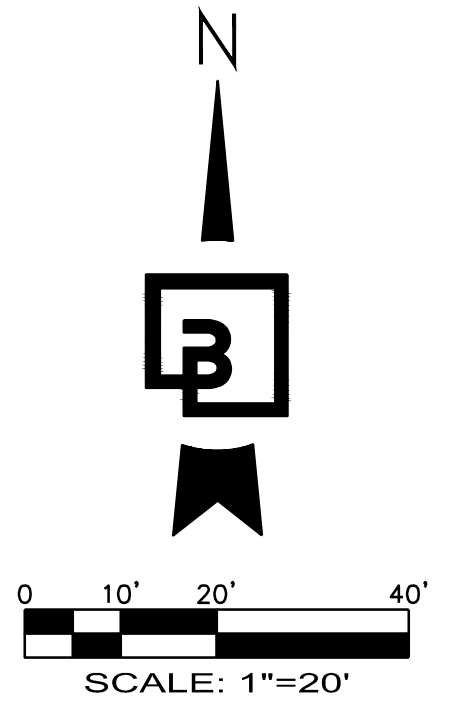


**CUT AND FILL EXHIBIT**  
**FOR**  
**CHEVRON SHERWOOD**  
 SECTION 30, TOWNSHIP 25 SOUTH, RANGE 1 WEST W.M.  
 CITY OF SHERWOOD, WASHINGTON COUNTY, OREGON



**ESTIMATED EARTHWORK QUANTITIES:**  
**CUT: 100 CY**  
**FILL: 600 CY**  
**NET: 500 CY (FILL)**  
**AREA TO BE DISTURBED = 0.28 AC**  
 EARTHWORK QUANTITIES ARE APPROXIMATE AND HIGHLY DEPENDANT ON SOIL CONDITIONS ENCOUNTERED DURING CONSTRUCTION. CONTRACTOR SHOULD PERFORM INDEPENDENT ESTIMATE FOR BIDDING.

**CUT:**   
**FILL:**



Chevron Products Company, a division of Chevron U.S.A. Inc., owns the copy rights to the design of the herein described "Extra Mile" market building as embodied in any tangible or electronic medium of expression including a building, architectural plans, or drawings. The copyrighted material includes the overall form as well as the arrangement and composition of spaces and elements in this "Extra Mile" design, but does not include individual standard features or details. Anyone wishes to copy, distribute, or sell this drawing or any derivative works based hereon must have written permission of Chevron Products Company.  
 ©2008 Chevron Products Company, a division of Chevron U.S.A. Inc. All rights reserved.

| MARK | DATE | REVISIONS | INITIAL | MARK | DATE | REVISIONS | INITIAL |
|------|------|-----------|---------|------|------|-----------|---------|
|      |      |           |         |      |      |           |         |
|      |      |           |         |      |      |           |         |
|      |      |           |         |      |      |           |         |

**B**  
**Barghausen Consulting Engineers, Inc.**  
 18215 72nd Avenue South  
 Kent, WA 98032  
 425.251.6222    [barghausen.com](http://barghausen.com)

EXISTING 6 MPS

**CUT AND FILL EXHIBIT**  
**21090 SW PACIFIC HIGHWAY**  
**SHERWOOD, OR**

| MILESTONES              |  | DATE | INITIALS | SS#             | SHEET         |
|-------------------------|--|------|----------|-----------------|---------------|
| ISSUED FOR PLANNING     |  |      |          | TBD             | <b>1 OF 1</b> |
| ISSUED FOR PERMIT       |  |      |          | JOB# 22558      |               |
| ISSUED FOR BID          |  |      |          |                 |               |
| ISSUED FOR CONSTRUCTION |  |      |          |                 |               |
|                         |  |      |          | SCALE: AS NOTED |               |

REV. DATE: 08/10/2021  
 P:\220006\22558\exhibit\22558-Grading Exhibit.dwg 11/28/2022 6:06 PM JLF/HARTY