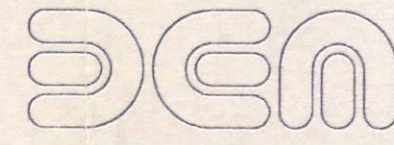


# City of Sherwood, Oregon

## WETLANDS INVENTORY



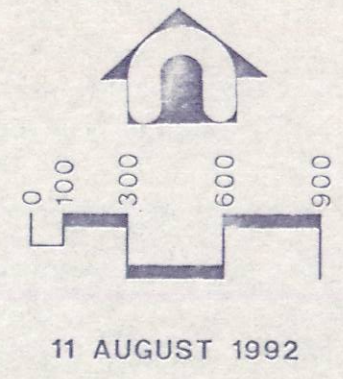
DAVID EVANS AND ASSOCIATES, INC.  
ENGINEERING, ARCHITECTURE, PLANNING, LANDSCAPE ARCHITECTURE  
AND INTERIOR DESIGN SERVICES

### LEGEND

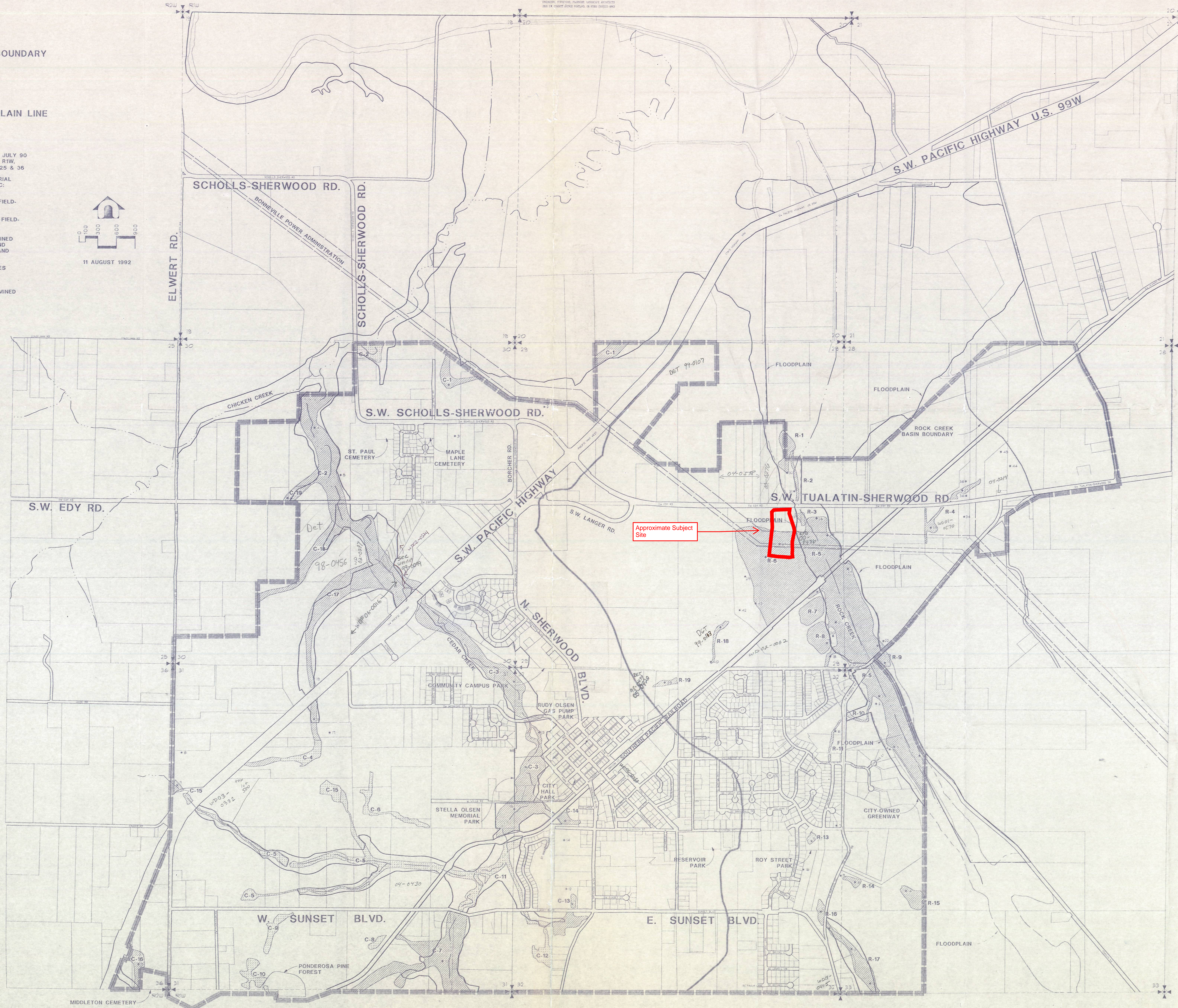
- WETLANDS
- WATERSHED BOUNDARY
- SECTION LINE
- SECTION CORNER
- URBAN GROWTH BOUNDARY
- WETLAND NUMBER
- TEST PIT NUMBER
- 100 YEAR FLOODPLAIN LINE

### NOTES

1. BASE MAP FROM METRO RLIS DATABASE, JULY 90 (STATE PLANE COORDINATE NAD-27) T2S, R1W, SECT 19-21, 28-33, AND T2S, R2W, SECT 25 & 36
2. FIELD WORK WAS DONE BY USING AN AERIAL PHOTOGRAPH BY BERGMAN PHOTOGRAPHIC, NEG. # 1528, AT 1:4000, JUNE 9, 1991.
3. WETLAND AREAS IN ROCK CREEK BASIN FIELD-CHECKED ON JANUARY 13-15, 1992
4. WETLAND AREAS IN CEDAR CREEK BASIN FIELD-CHECKED ON MAY 27-28, 1992
5. ALL WETLAND BOUNDARIES WERE DETERMINED IN THE FIELD WHERE PERMITTED. WETLAND BOUNDARIES HAVE NOT BEEN SURVEYED AND ARE ONLY APPROXIMATE.
6. THESE MAPS ARE FOR PLANNING PURPOSES ONLY. THEY ARE NOT TO BE USED FOR REGULATORY PURPOSES.
7. BOUNDARIES OF THESE WETLANDS DETERMINED BY OFF-SITE METHOD OR DELINEATED BY ANOTHER CONSULTING FIRM.



APPROVED WETLANDS INVENTORY  
Oregon Division of State Lands  
Map No. 1-50-27  
Date 11/28/92 Approved by [Signature]



1:600