

May 17, 2022

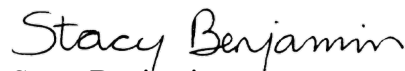
STACEY REED
AKS ENGINEERING & FORESTRY, LLC
12965 SW HERMAN RD #100
TUALATIN OR 97062

Re: 14843 SW Oregon Street Commercial Subdivision; CWS file 22-001413 (Tax map 2S129DC Tax lot 00500, 00600, 00700)

Clean Water Services has reviewed your proposal for the above referenced activity on your site. Staff has conducted a pre-screen review and requested completion of a Sensitive Areas Certification Form. Following review of submitted materials it appears that Sensitive Areas do not exist on-site or within 200' from your project. In light of this result, this document will serve as your Service Provider letter as required by Resolution and Order 19-5, Section 3.02.1, as amended by Resolution and Order 19-22. All required permits and approvals must be obtained and completed under applicable local, state, and federal law.

This concurrence letter does NOT eliminate the need to protect Sensitive Areas if they are subsequently identified on your site.

Sincerely,



Stacy Benjamin
Environmental Plan Review

Attachments (3)

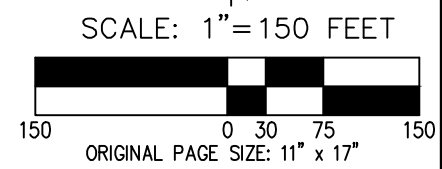
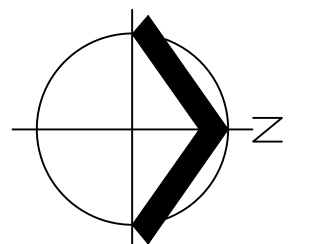


CWS FILE NO. 22-001413
 Approved
 Clean Water Services
 FOR ENVIRONMENTAL REVIEW
 By *SNB* Date 5/17/2022
 SPL ATTACHMENT 1 OF 3

LEGEND

PLOT LOCATIONS SHOWN WERE LOCATED BY AKS ENGINEERING & FORESTRY, LLC ON APRIL 28, 2022 USING A TRIMBLE GEO 7X HANDHELD GPS RECEIVER WITH SUB-METER ACCURACY. NO WETLAND OR WATER BOUNDARIES WERE DELINEATED ON-SITE.

1 FT INTERVAL GROUND CONTOURS, STUDY AREA BOUNDARY AND TREE SURVEY >6" DBH DERIVED FROM AKS PROFESSIONAL LAND SURVEY.

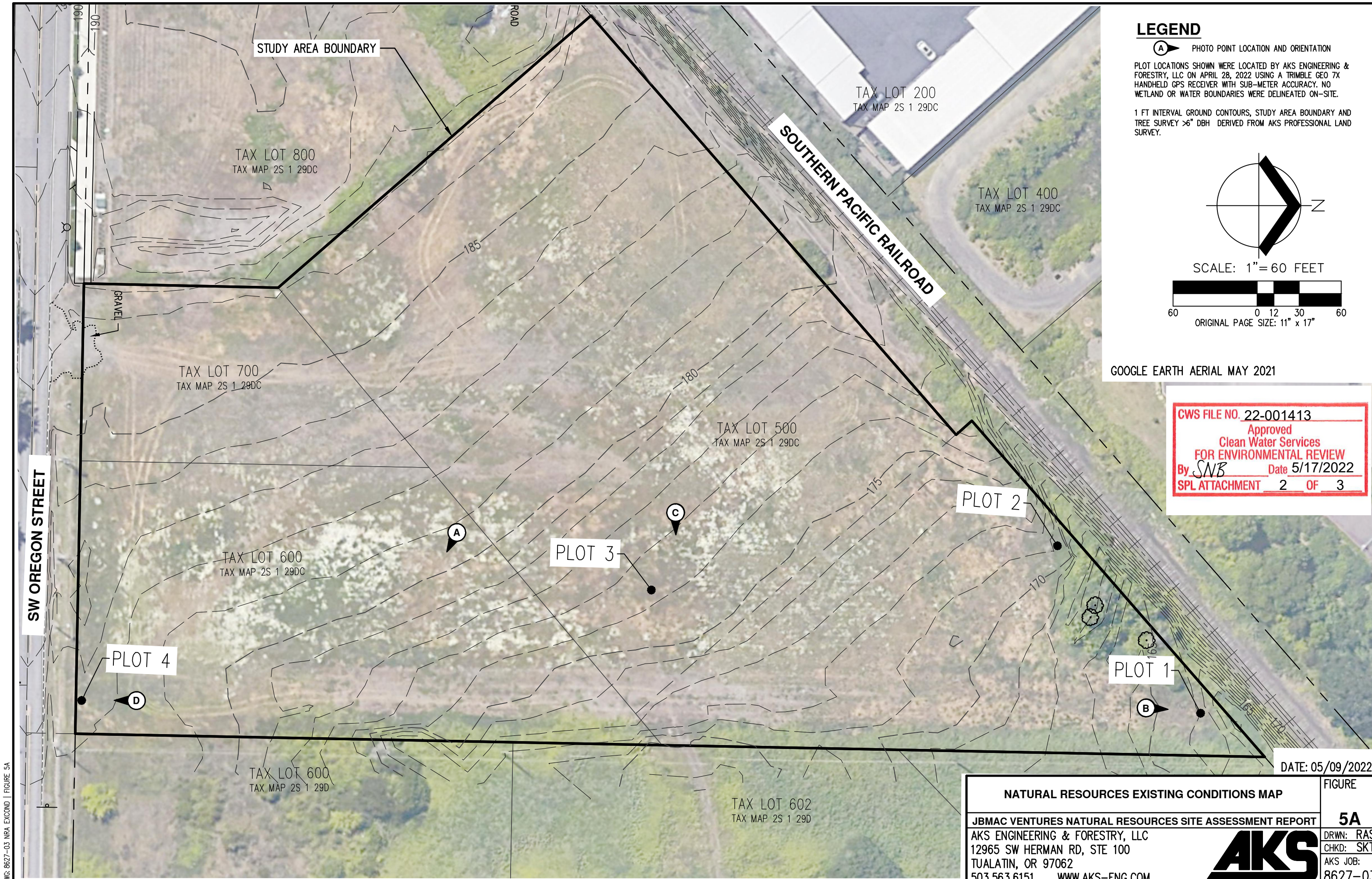


GOOGLE EARTH AERIAL MAY 2021


DATE: 05/09/2022

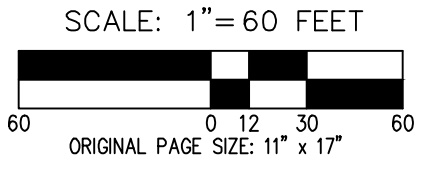
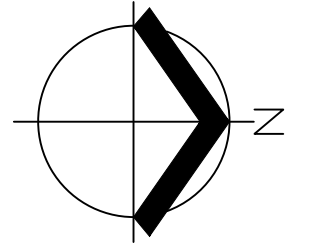
NATURAL RESOURCES EXISTING CONDITIONS OVERVIEW MAP	FIGURE
JBMAC VENTURES NATURAL RESOURCES SITE ASSESSMENT REPORT	5
AKS ENGINEERING & FORESTRY, LLC 12965 SW HERMAN RD, STE 100 TUALATIN, OR 97062 503.563.6151 WWW.AKS-ENG.COM	DRWN: RAS CHKD: SKT AKS JOB: 8627-03





LEGEND

 PHOTO POINT LOCATION AND ORIENTATION
 PLOT LOCATIONS SHOWN WERE LOCATED BY AKS ENGINEERING & FORESTRY, LLC ON APRIL 28, 2022 USING A TRIMBLE GEO 7X HANDHELD GPS RECEIVER WITH SUB-METER ACCURACY. NO WETLAND OR WATER BOUNDARIES WERE DELINEATED ON-SITE.
 1 FT INTERVAL GROUND CONTOURS, STUDY AREA BOUNDARY AND TREE SURVEY >6" DBH DERIVED FROM AKS PROFESSIONAL LAND SURVEY.



GOOGLE EARTH AERIAL MAY 2021

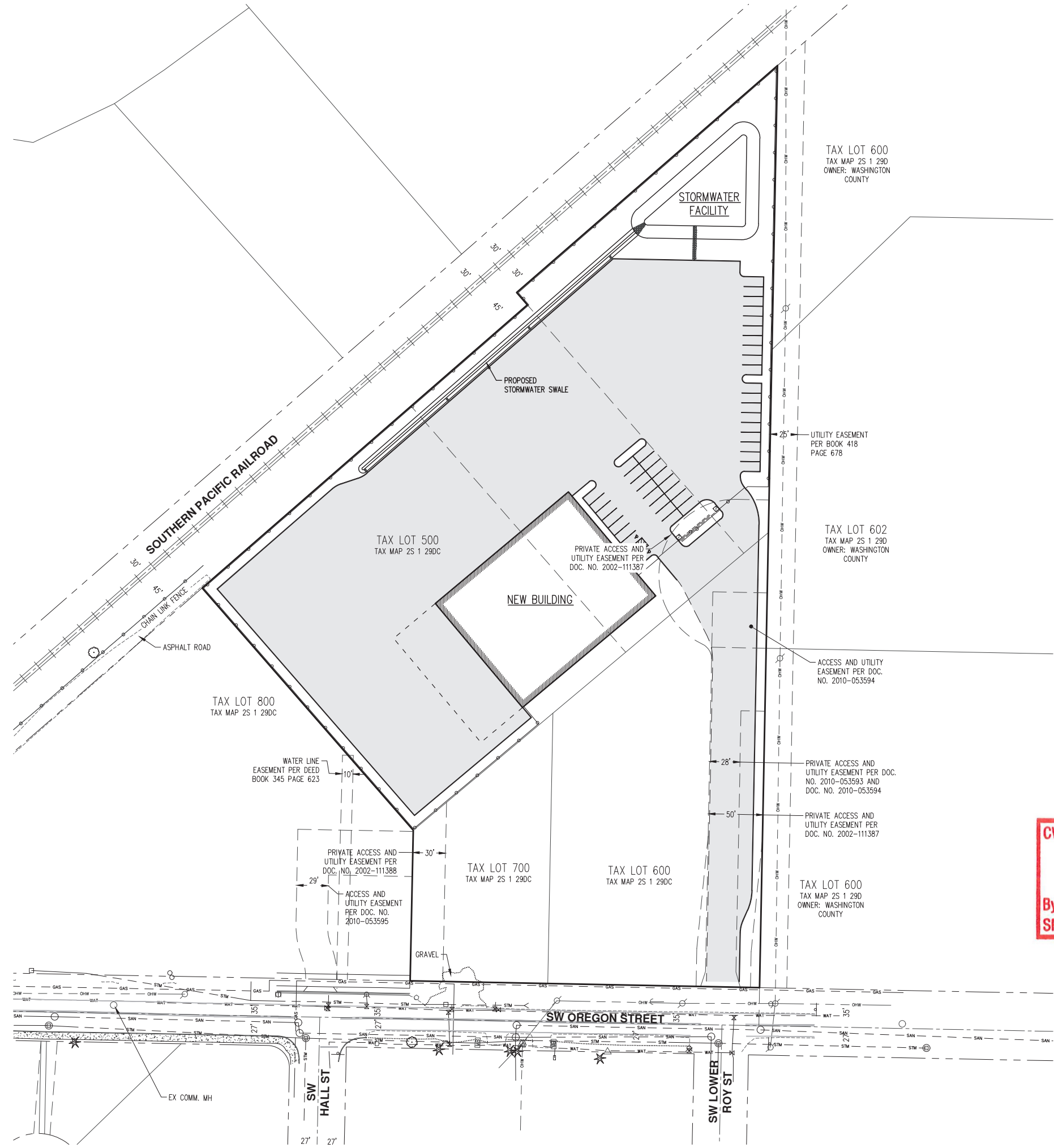
CWS FILE NO. 22-001413
 Approved
 Clean Water Services
 FOR ENVIRONMENTAL REVIEW
 By SNB Date 5/17/2022
 SPL ATTACHMENT 2 OF 3

DATE: 05/09/2022

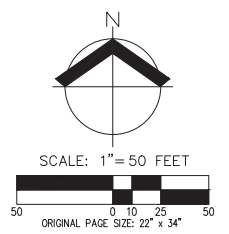
NATURAL RESOURCES EXISTING CONDITIONS MAP	FIGURE
JBMAC VENTURES NATURAL RESOURCES SITE ASSESSMENT REPORT	5A
AKS ENGINEERING & FORESTRY, LLC 12965 SW HERMAN RD, STE 100 TUALATIN, OR 97062 503.563.6151 WWW.AKS-ENG.COM	DRWN: RAS CHKD: SKT AKS JOB: 8627-03



DWG: 8627-03_NRA_EXCOND | FIGURE 5A



CWS FILE NO. 22-001413
Approved
Clean Water Services
FOR ENVIRONMENTAL REVIEW
 By *SNB* Date *5/17/2022*
SPL ATTACHMENT 3 OF 3



SITE PLAN
AFP SYSTEMS SITE PLAN
AFP SYSTEMS
SHERWOOD, OREGON

JOB NUMBER: 8627-03
 DATE:
 DESIGNED BY: APC & TJ
 DRAWN BY: APC
 CHECKED BY: TJ

FIGURE 6

AKS DRAWING FILE: 8627-03 SITE PLANNING | LAYOUT: LAYOUT1