

EXTERIOR ELEVATION GENERAL NOTES

1. THERE IS NO SIDING MATERIAL OR PAINT COLOR CHANGE ON AN OUTSIDE CORNER OF THE BUILDING.
2. ALL COLOR & MATERIAL CHANGES OCCUR ON AN INSIDE CORNER.
3. SEE WINDOW SCHEDULE FOR FRAME MATERIAL AND COLOR OF WINDOWS
4. DOORS AND DOOR FRAME COLOR TO MATCH COLOR OF ADJACENT MATERIAL.
5. FOR TYPICAL PIPE PENETRATIONS THROUGH EXTERIOR WALLS, (ADD VIEW REFERENCE TAG TO DETAIL)

EXTERIOR ELEVATION COLOR & FINISH LEGEND

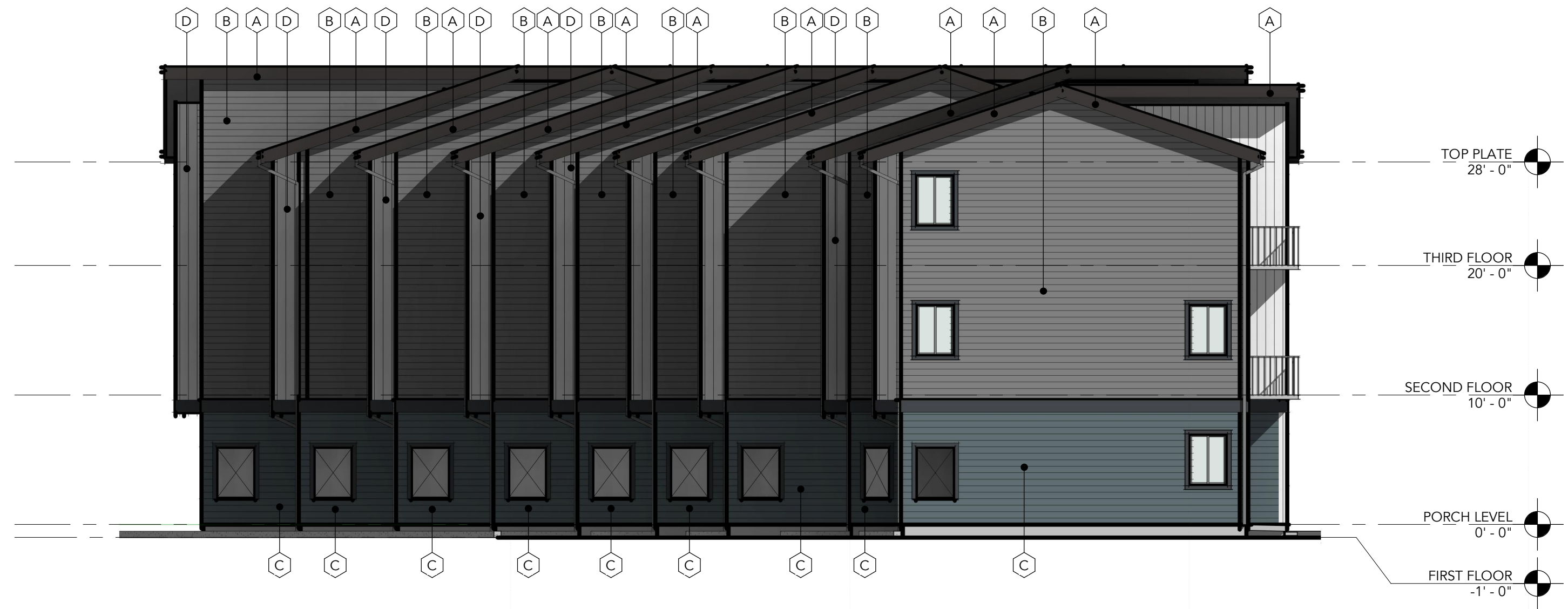
- (A) MATERIAL: FIBER CEMENT FASCIA AND TRIM
- (B) MATERIAL: FIBER CEMENT LAP SIDING 1
- (C) MATERIAL: FIBER CEMENT LAP SIDING 2
- (D) MATERIAL: FIBER CEMENT VERTICAL SIDING
- (E) MATERIAL: ARCHITECTURAL COMPOSITION ROOF



1 NORTH ELEVATION
SCALE: 1/8" = 1'-0"



2 SOUTH ELEVATION
SCALE: 1/8" = 1'-0"



3 WEST ELEVATION
SCALE: 1/8" = 1'-0"



4 EAST ELEVATION
SCALE: 1/8" = 1'-0"

EXTERIOR ELEVATION GENERAL NOTES

1. THERE IS NO SIDING MATERIAL OR PAINT COLOR CHANGE ON AN OUTSIDE CORNER OF THE BUILDING.
2. ALL COLOR & MATERIAL CHANGES OCCUR ON AN INSIDE CORNER.
3. SEE WINDOW SCHEDULE FOR FRAME MATERIAL AND COLOR OF WINDOWS
4. DOORS AND DOOR FRAME COLOR TO MATCH COLOR OF ADJACENT MATERIAL.
5. FOR TYPICAL PIPE PENETRATIONS THROUGH EXTERIOR WALLS, (ADD VIEW REFERENCE TAG TO DETAIL)

EXTERIOR ELEVATION COLOR & FINISH LEGEND

- (A) MATERIAL: FIBER CEMENT FASCIA AND TRIM
- (B) MATERIAL: FIBER CEMENT LAP SIDING 1
- (C) MATERIAL: FIBER CEMENT LAP SIDING 2
- (D) MATERIAL: FIBER CEMENT BOARD AND BATTEN SIDING
- (E) MATERIAL: ARCHITECTURAL COMPOSITION ROOF



1 NORTH ELEVATION
SCALE: 1/8" = 1'-0"



2 SOUTH ELEVATION
SCALE: 1/8" = 1'-0"



3 WEST ELEVATION
SCALE: 1/8" = 1'-0"



4 EAST ELEVATION
SCALE: 1/8" = 1'-0"