

CEDAR CREEK TRAIL PROJECT

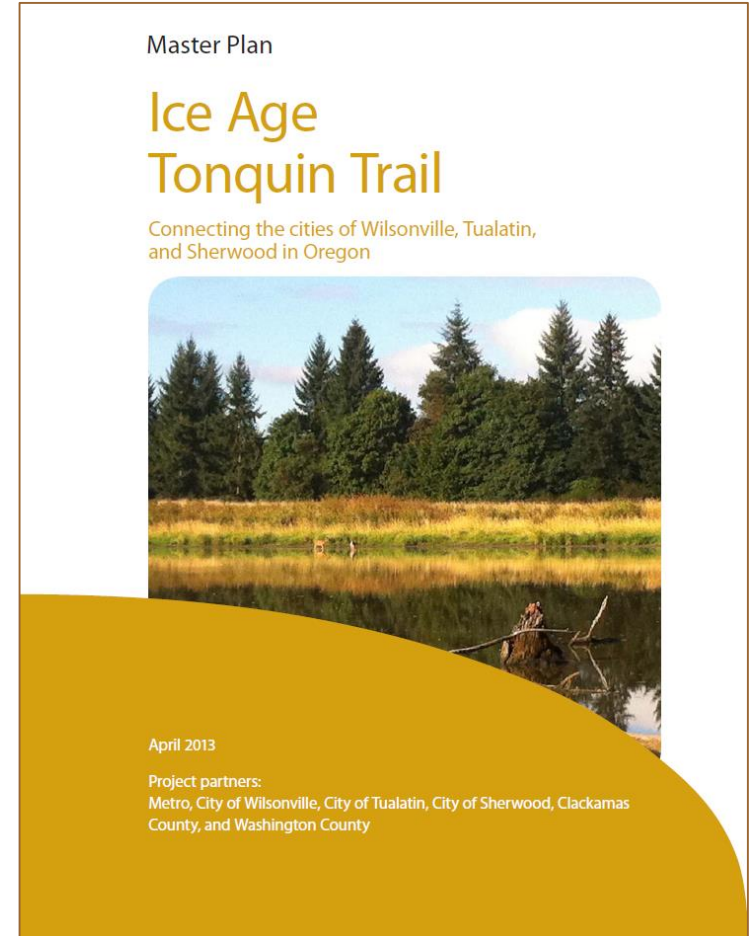
Parks and Recreation Board Briefing



November 2, 2015

Ice Age Tonquin Trail Master Plan

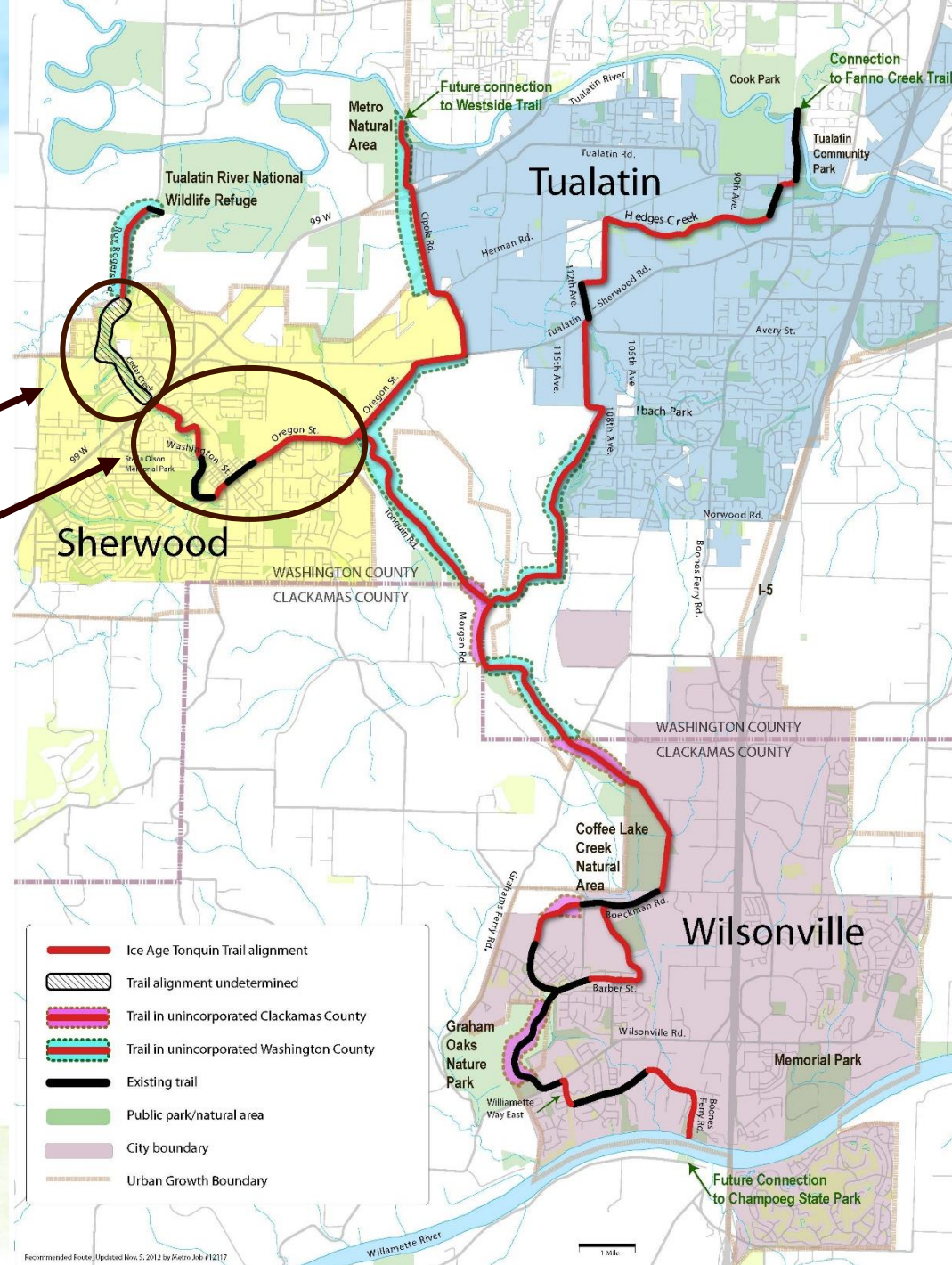
- Ice Age Tonquin Trail provides regional bike and pedestrian links between the Willamette and Tualatin Rivers
- Provides detailed alignment, design, and implementation guidance
- Travels through the communities of Wilsonville, Sherwood, and Tualatin
- The 22 mile trail will connect dozens of neighborhoods, businesses, schools, and parks



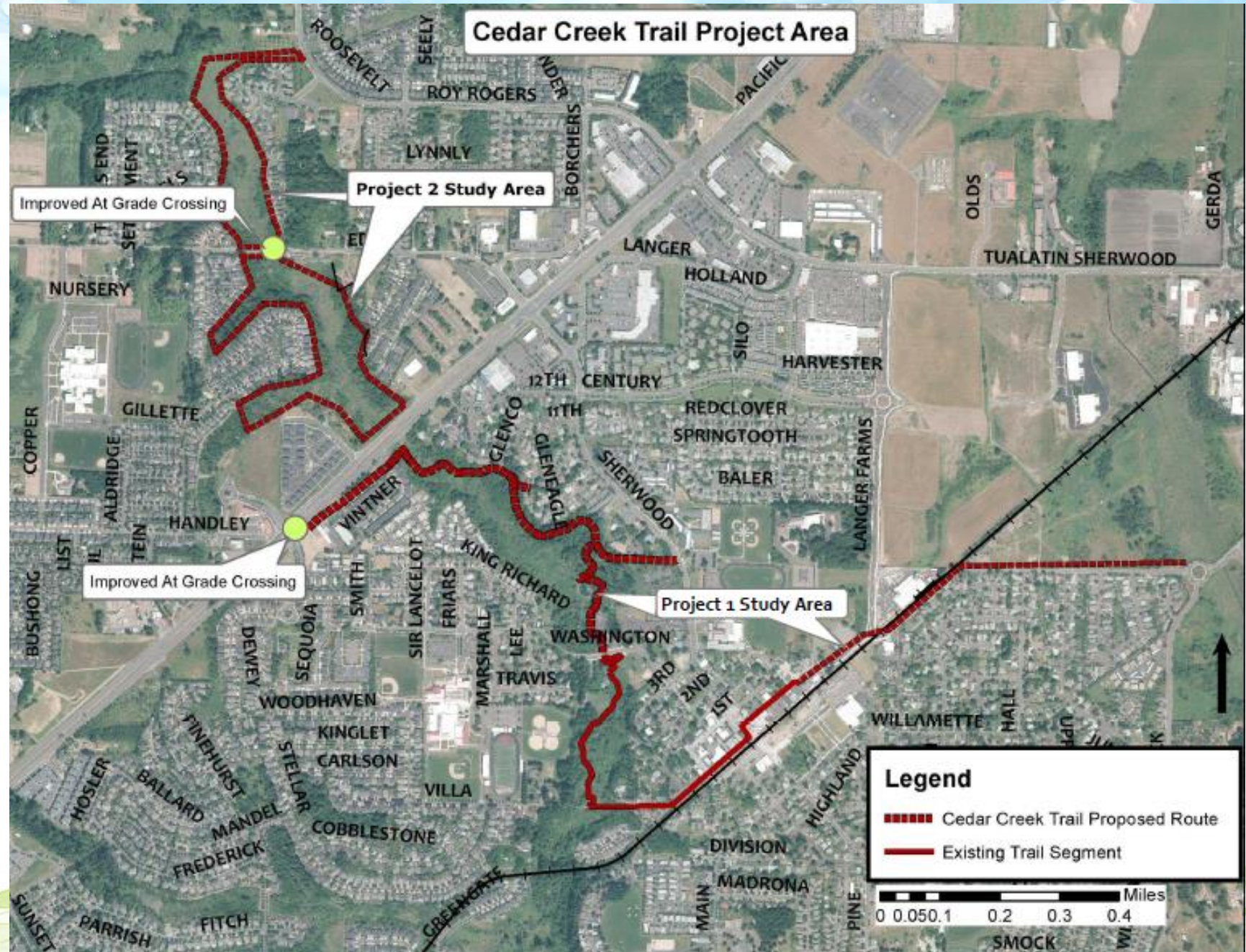
Master Plan Map

Project 2 study area

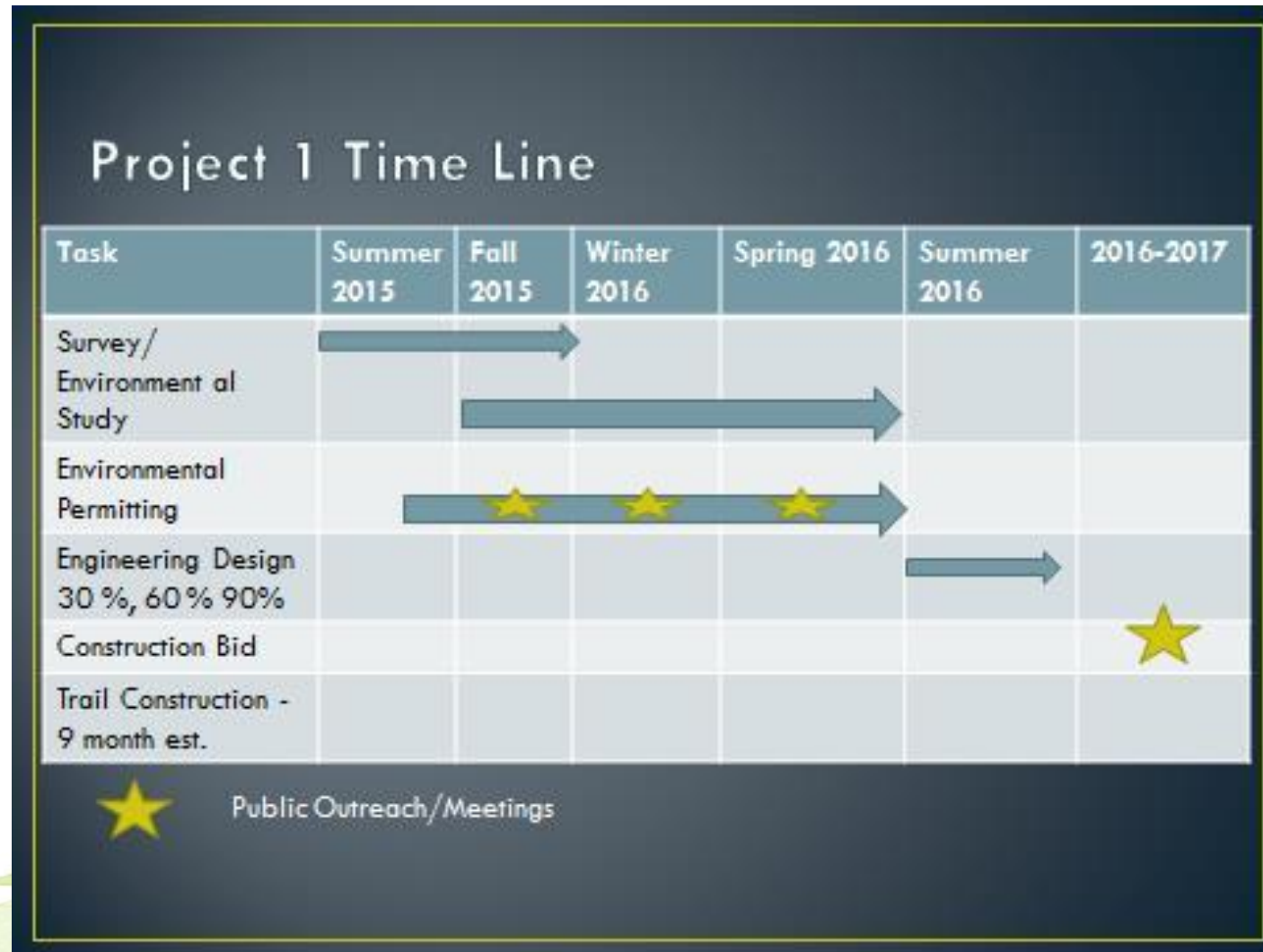
Project 1 study area



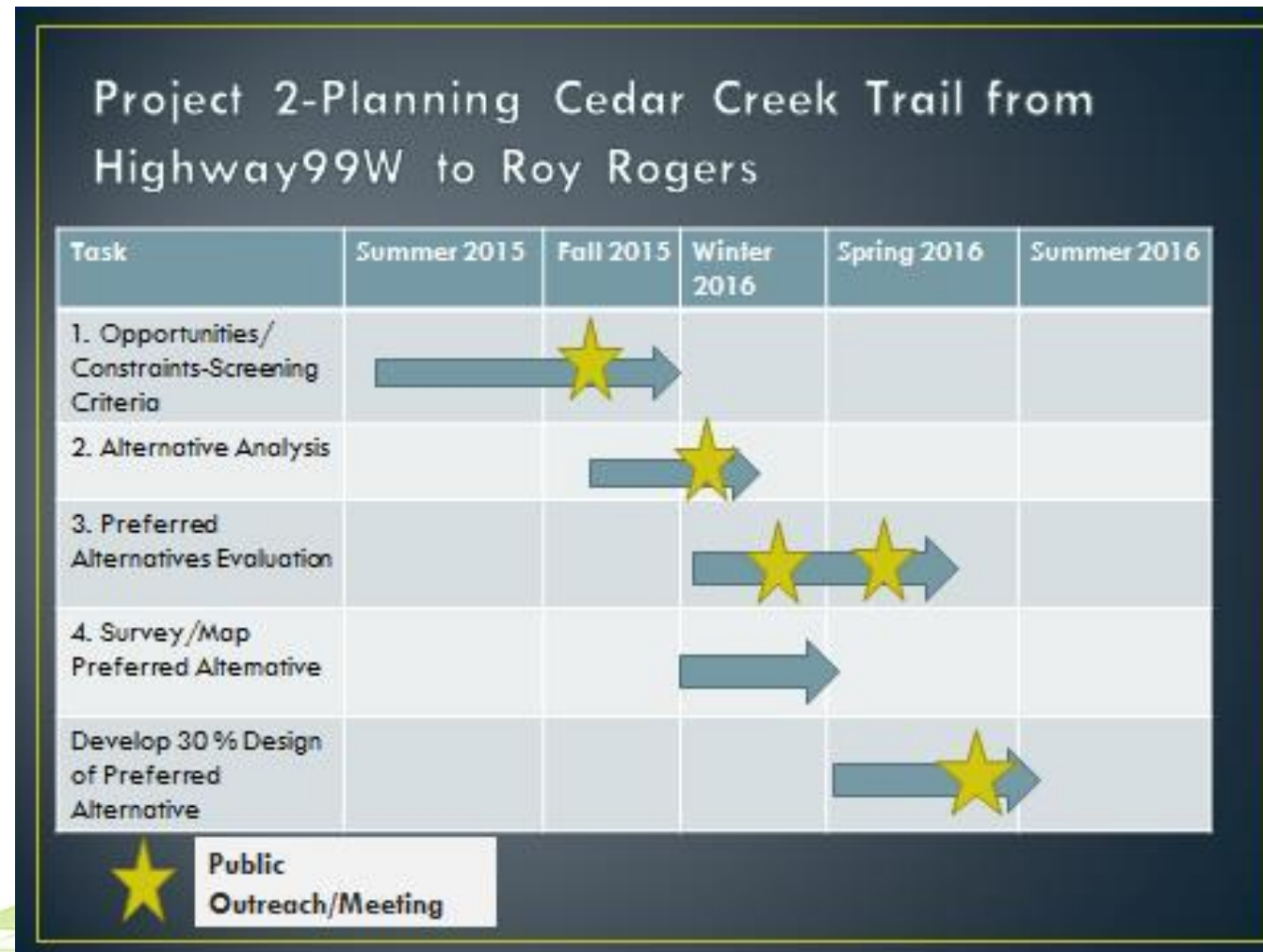
Project Map



Project 1 Timeline



Project 2 Timeline



Decision-making Structure



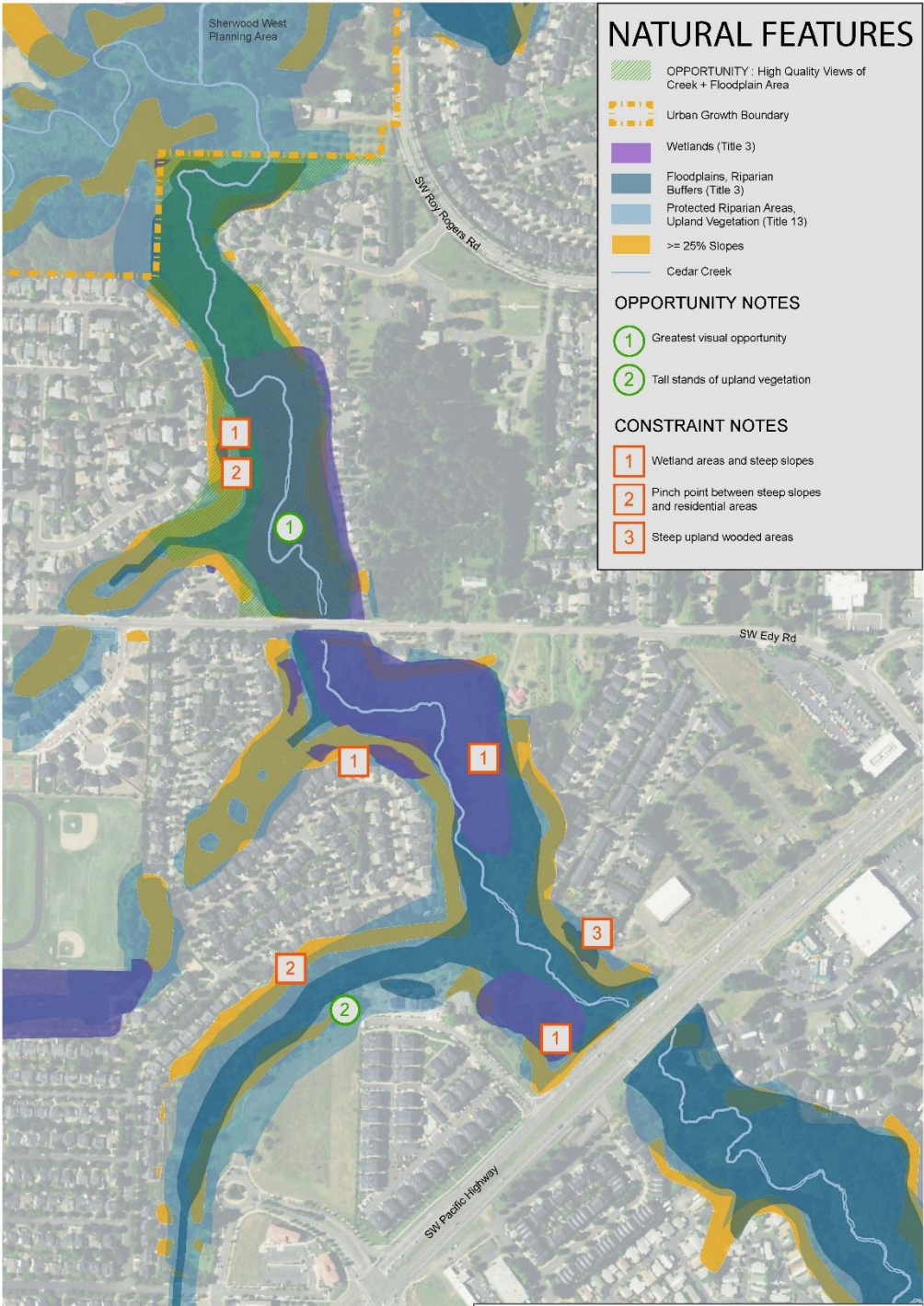
Project 1



Project 1



Project 2 Opportunities and Constraints: Natural Features



Project 2 Opportunities and Constraints: Access + Property



Project 2 Evaluation Criteria: Open House Dot Exercise Results

Criterion	# of dots
Quality of Experience / Access to Nature	13
Access	13
Environmental Compatibility	23
User Safety	25
Connections to Destinations	10
Ownership/Private Property Impacts	36
Requires expensive improvements	9
Permitting feasibility	1

Upcoming Meetings

- TTAC/LTAC #3: November 18, 2015
 - Project 1: Design update
 - Project 2: Trail alignment screening discussion
- Open House #2: December 3, 2015
 - Project 1: Design update
 - Project 2: Trail alignment screening results
- Parks and Rec. Board: December 7, 2015



Questions/Comments?

Visit the project website for updates on the project

<http://www.sherwoodoregon.gov/planning/page/cedar-creek-trail>

