

CEDAR CREEK TRAIL UPDATE



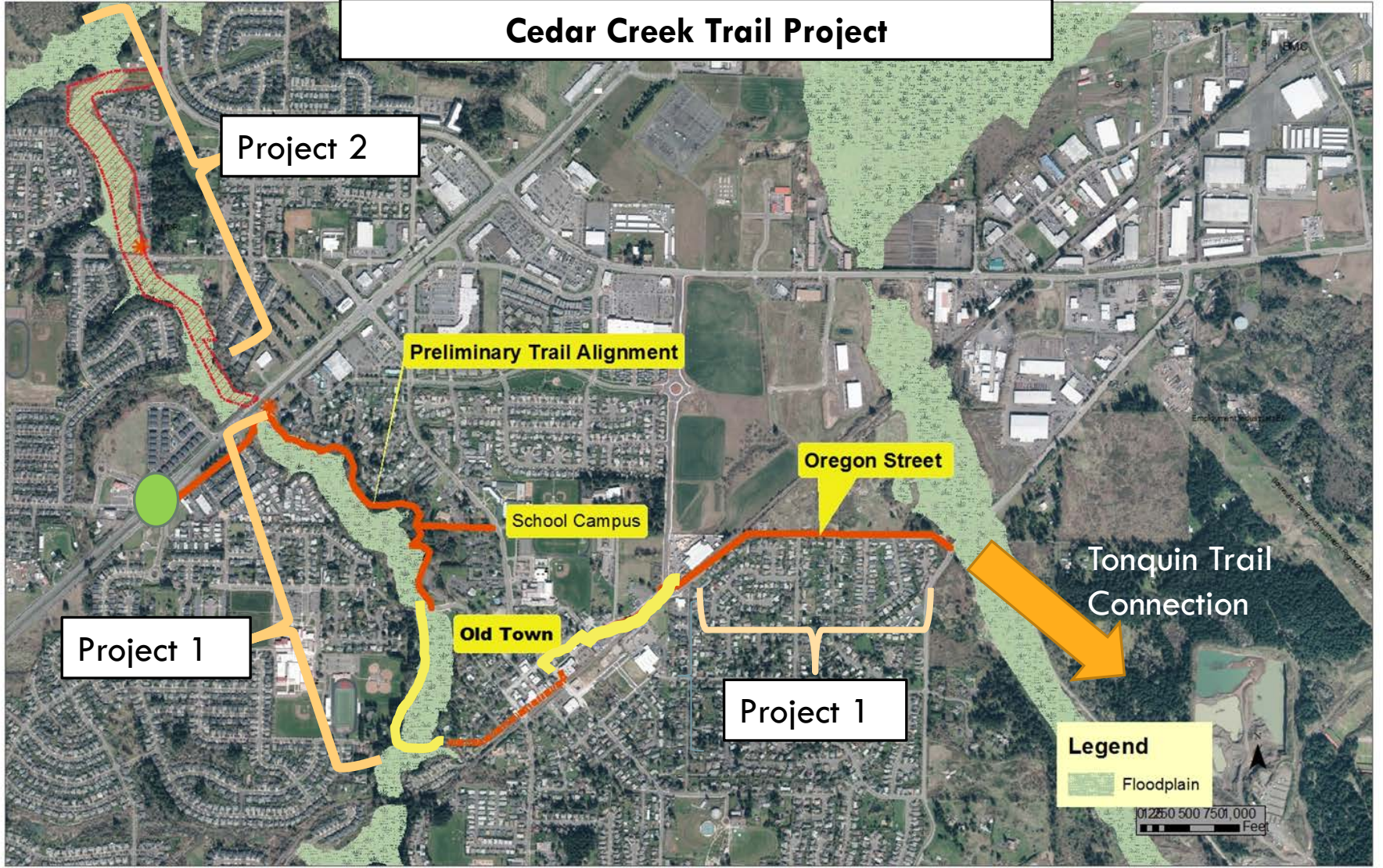
Parks Board Meeting
October 5, 2015

Today's Meeting

- **Cedar Creek Trail Project Overview**
- **CCT Project Timeline**
- **Preliminary Design of Project 1**
- **Discuss/Q and A**



Cedar Creek Trail Project



Project 2

Preliminary Trail Alignment

Oregon Street

School Campus

Tonquin Trail Connection

Project 1

Old Town

Project 1

Legend

Floodplain

0 250 500 750 1,000 Feet

Cedar Creek Trail Project 1 Area-Murdock to 99W-Design and Construction

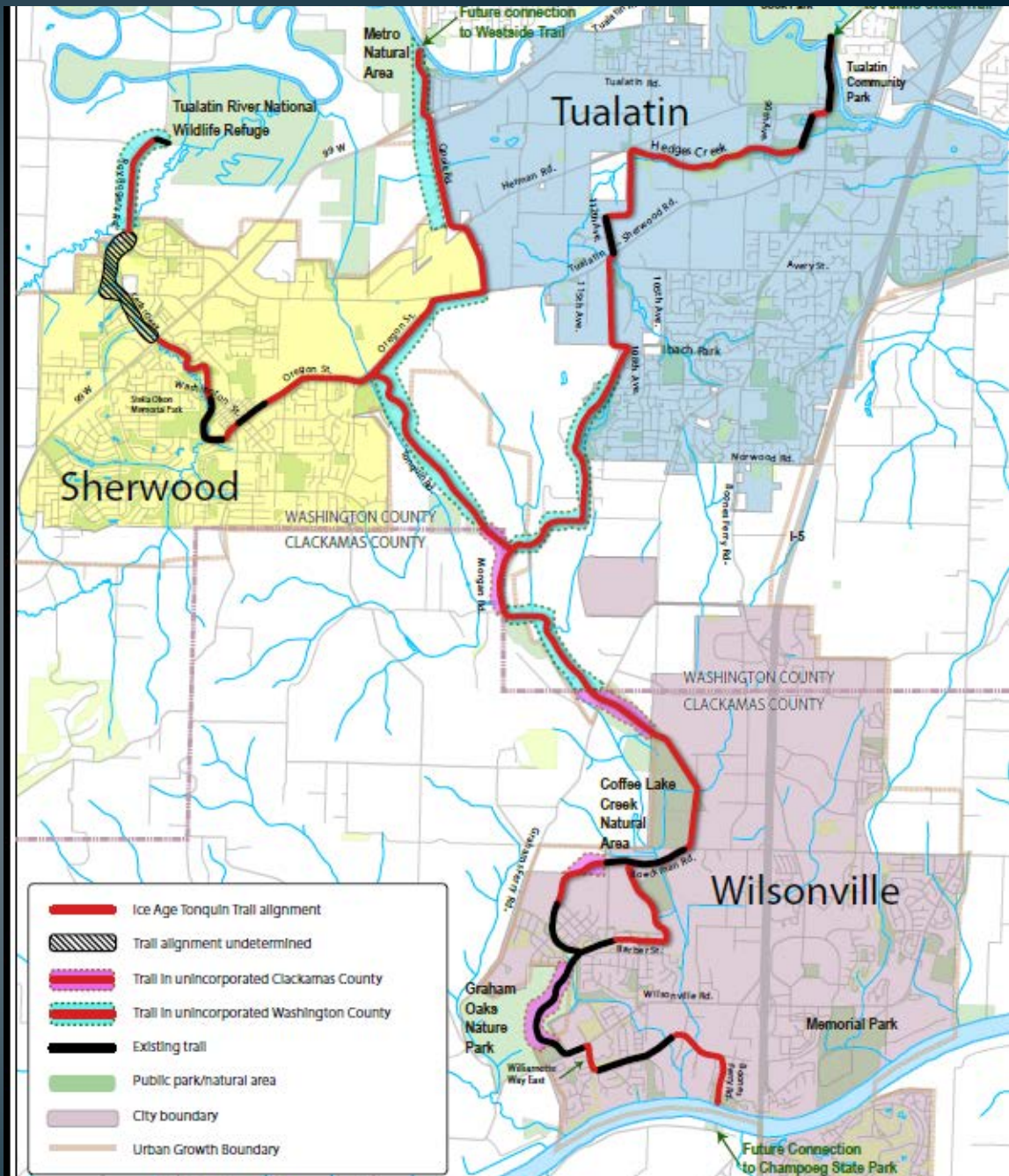


Project 2 Area-Planning from 99W north to Roy Rogers



Ice Age Tonquin Trail Master Plan

Metro Regional Trail
that connects Tualatin
Sherwood and
Wilsonville



Decision-Making Structure



Project 1 Schedule

	Quarter 2 2015 April-June	Quarter 3, 2015 July-Sept	Quarter 4, 2015 Oct.-Dec	Quarter 1, 2016 Jan-March	Quarter 2, 2016 April-June	Quarter 3, 2016 July-Sept.	Quarter 4 2016-2017
Project 1-Murdock Rd to 99W Phase 1 Design							
Task 1 Project Management							
Task 2 Survey and Mapping							
Task 3 Environmental Services							
<i>Clean Water Services Review</i>							
<i>Archeology</i>							
<i>Biology</i>							
Task 3.5 Wetlands-Permitting							
Task 4 Public Involvement		Advisory Committees	Advisory Committees, Open House and Parks Board		Advisory Committees, Parks Board Open Houses		
Task 5 Utility Coordination							
Tasks 6-12 Design Tasks							
30 % Design							
60 % Design							
90 % Design							
100% Design							
Task 13 Right of Way							
Task 14 Bid Assistance							
Phase 2-Construction							
Construction Bid							
Construction							2017- approx. 9 months

Project 2 Schedule

Project 2-Highway 99W to Roy Rogers	Quarter 3, 2015 July-Sept	Quarter 4, 2015 Oct.-Dec	Quarter 1, 2016 Jan-March	Quarter 2, 2016 April-June	Quarter 3, 2016 July-Sept.	
Task 1 Project Management						
Task 2 Survey and Mapping						
Task 3 Environmental Services						
Task 4 Public Involvement		Advisory Committee and Open House	Advisory Committee and Open House	Advisory Committee and Open House	Parks Board	
Task 5 Utility Coordination						
Task 6 Alternatives Development						
Opportunities and Constraints Evaluation						
Develop Screening Criteria						
Trail Design Concepts						
Alternative Evaluation						
Preferred Alternative Development						
Task 7 30 % Design of Preferred Alignment						

Meetings	Date (Tentative)	Project 1 Topics Murdock to 99W	Project 2 Topics 99W to Roy Rogers
LTAC/TTAC 1	Sept. 23, 2015	Overview, Schedule, Prelim. Design	<ul style="list-style-type: none"> • Overview • Schedule
LTAC/TTAC 2	Oct. 21, 2015	Follow up before 30% Submittal	<ul style="list-style-type: none"> • Review Opportunities and Constraints • Screening Criteria
LTAC/TTAC 3	Nov. 18, 2015	Follow up to the 30 % Submittal	<ul style="list-style-type: none"> • Review • Screen Trail Alignment Concepts
LTAC/TTAC 4	Mid-March 2016	Design Update	<ul style="list-style-type: none"> • Present Evaluation Criteria • Trail Design Alternatives
LTAC/TTAC 5	4 th week of April 2016	Design Update	<ul style="list-style-type: none"> • Review Evaluation Results • Develop Recommendation for Preferred Alternative

Open House Schedule

Meeting	Date (Tentative)	Project 1 Topics Murdock to 99W	Project 2 Topics 99W to Roy Rogers
Open House 1	Oct. 29, 2015	Preliminary Design	Opportunities and Constraints Screening Criteria
Open House 2	Dec. 3, 2015	30% Design Follow-up	Trail Alignment Concepts and Screen Results
Open House 3	March 2016	Design Update	Present Evaluation Criteria and Design Alternatives

What's Been Happening this Summer.....

1. Preliminary Survey and Wetland Boundary
2. Outreach Events over
3. Site Visits-Parks Board/
LTAC
4. Local Trail Advisory
Committee (LTAC) Mtg 1
5. Technical Advisory
Committee (TTAC) Mtg 1



What's Going on Now....

- Consultant's working on....

- Completing Survey
- Archeology Work Begins
- Geotech soil samples for bridge near 99W
- Preliminary Design Work for Project 1
- Project 2 Developing Opportunities and Constraints and Screening Criteria-Preliminary Alignment Options

- Outreach

- Gleneagle Condo Meeting-Oct 19
- LTAC/TAC Meeting –Oct 21
- **Open House Oct 29th**
- Parks Board Update by Consultant Nov.



Project 1 Preliminary Design

99W to Murdock Road

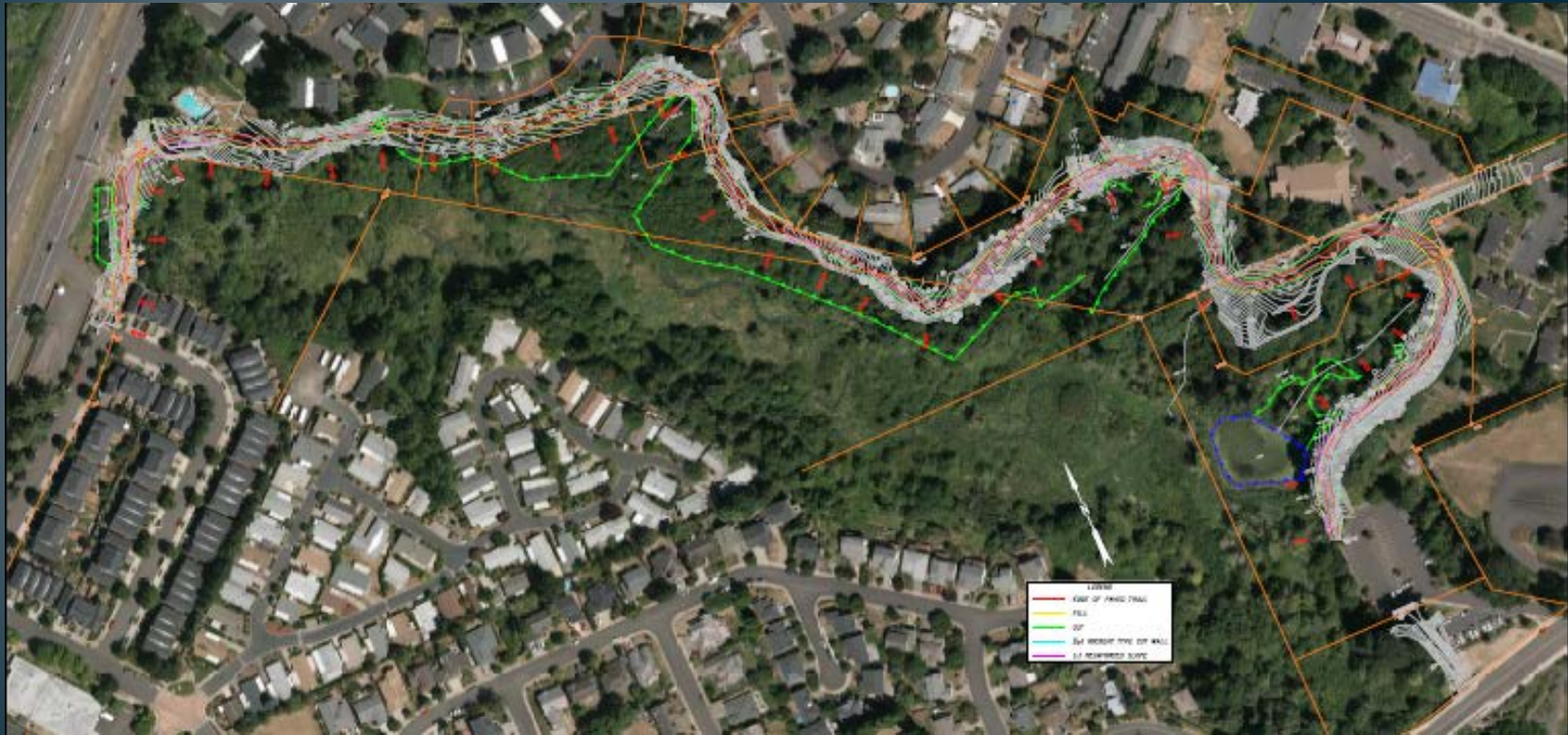


99W Intersection-

Add appropriate signal timing for peds and bikes
Pedestrian refuge in Median
Shared pathway along
Alexander Ln.

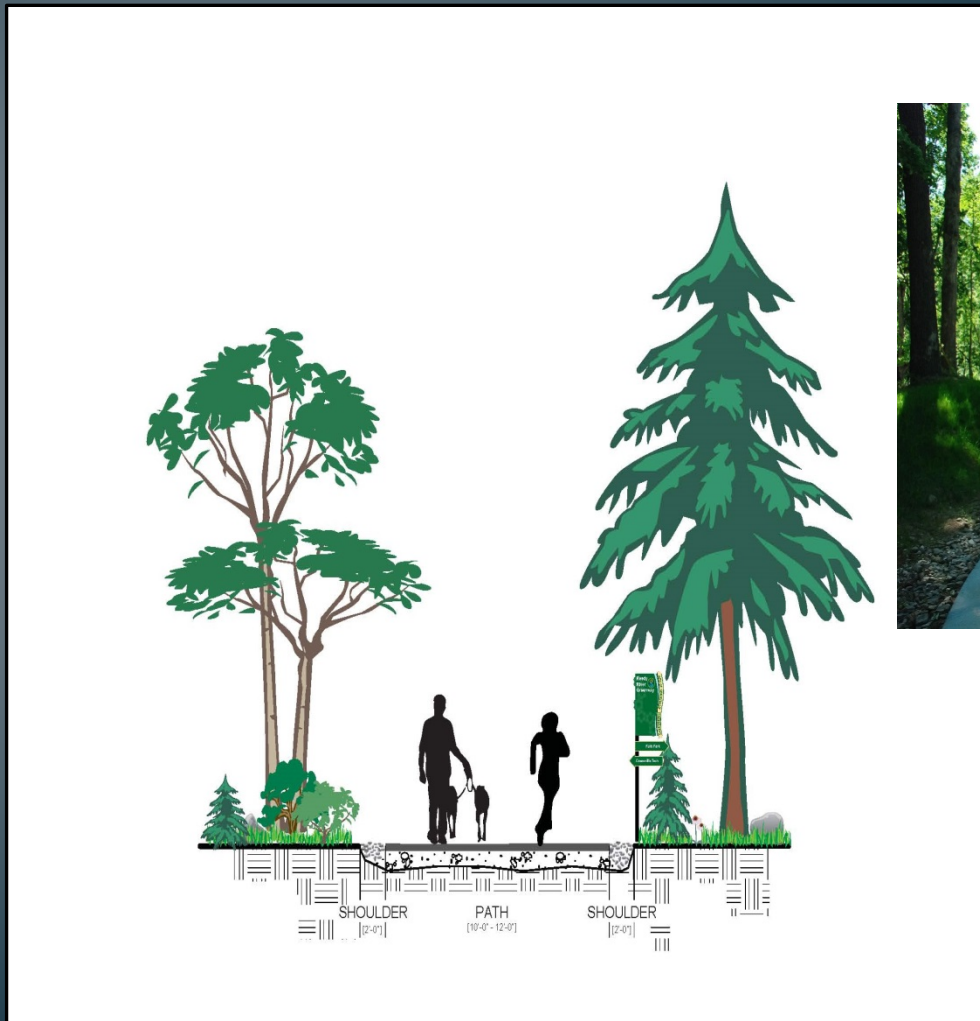


Project 1 Segment from 99W to Washington St. Parking Lot



Trail Facility Types

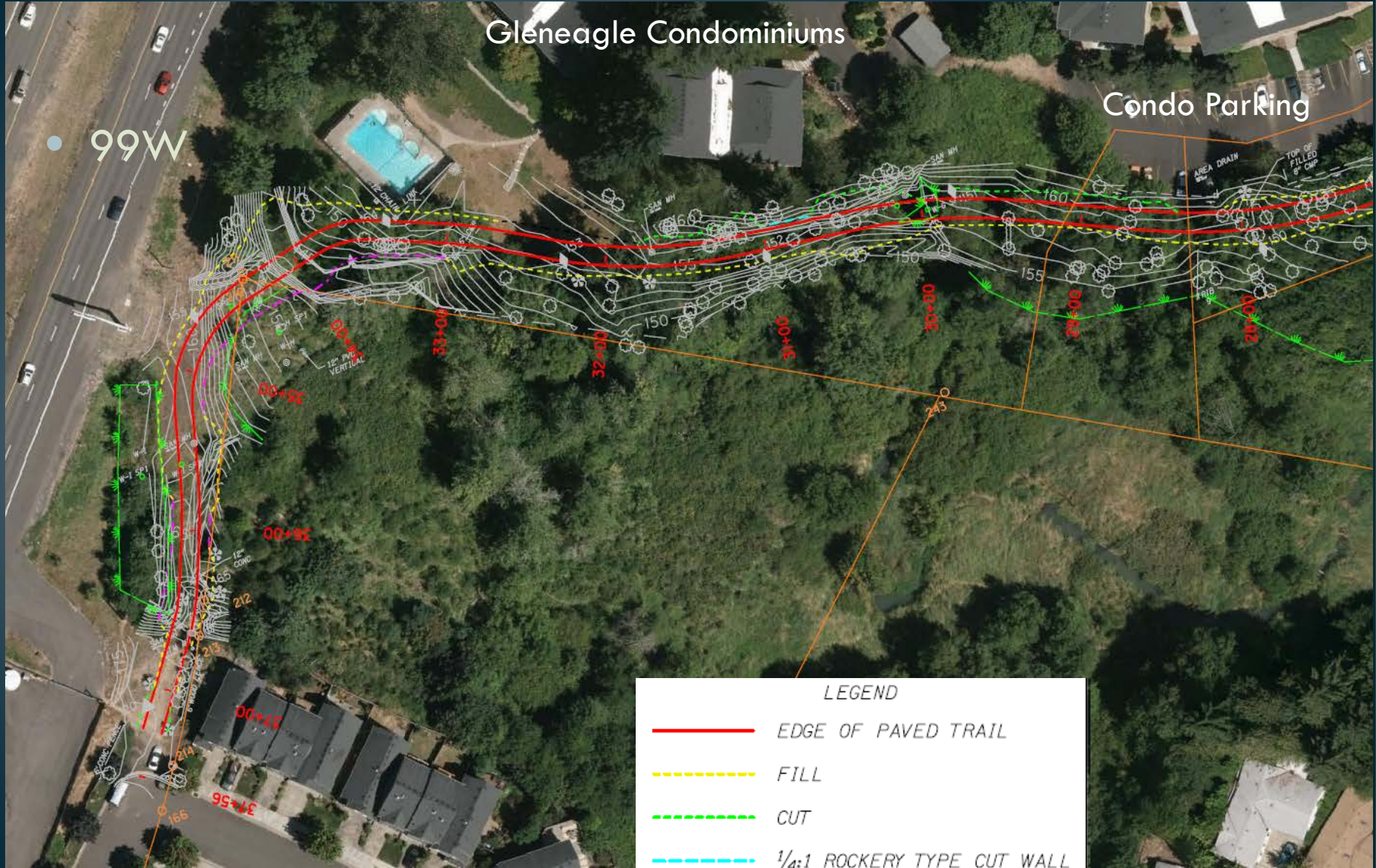
Shared Use Paths



Gleneagle Condominiums

Condo Parking

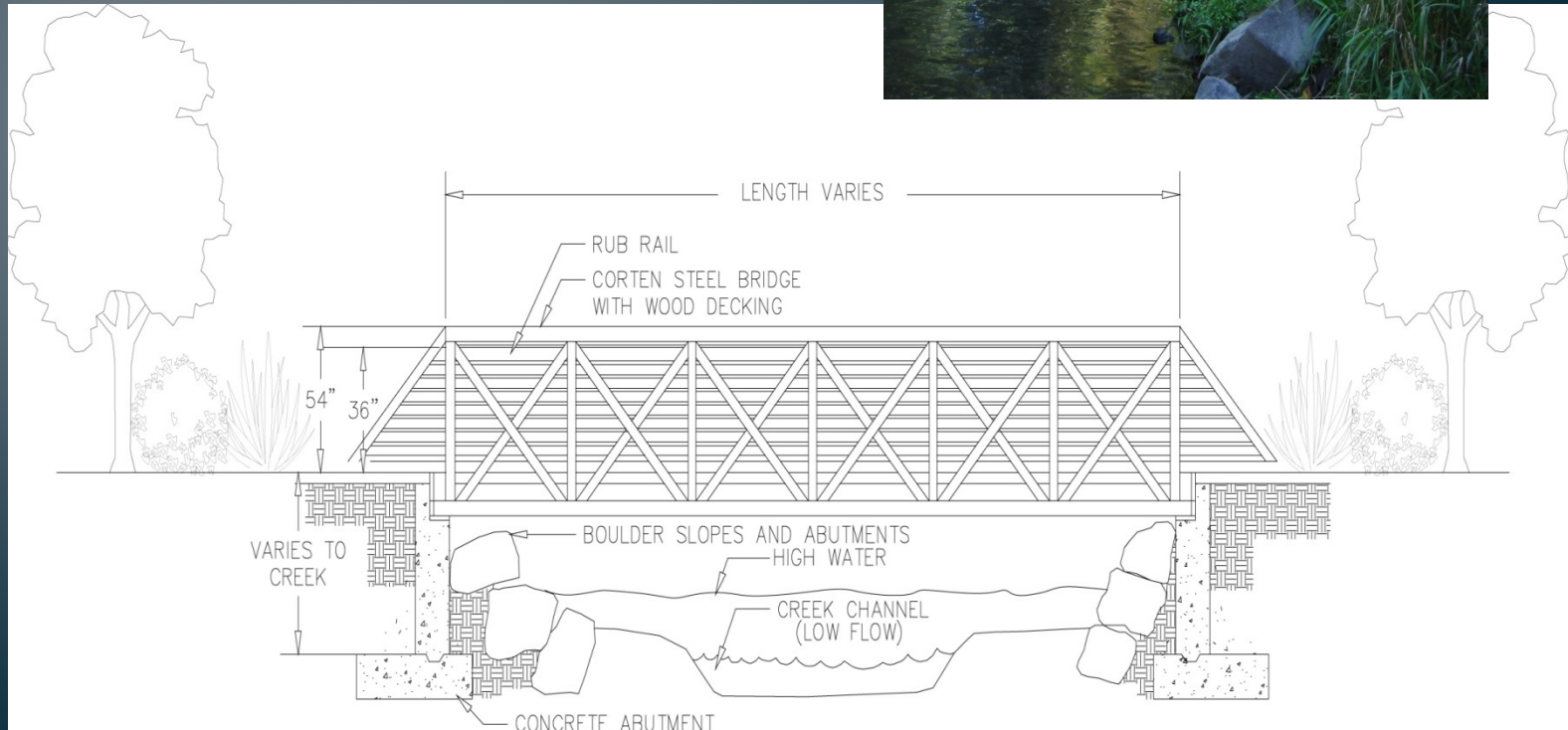
99W



LEGEND	
	EDGE OF PAVED TRAIL
	FILL
	CUT
	1/4:1 ROCKERY TYPE CUT WALL
	1:1 REINFORCED SLOPE

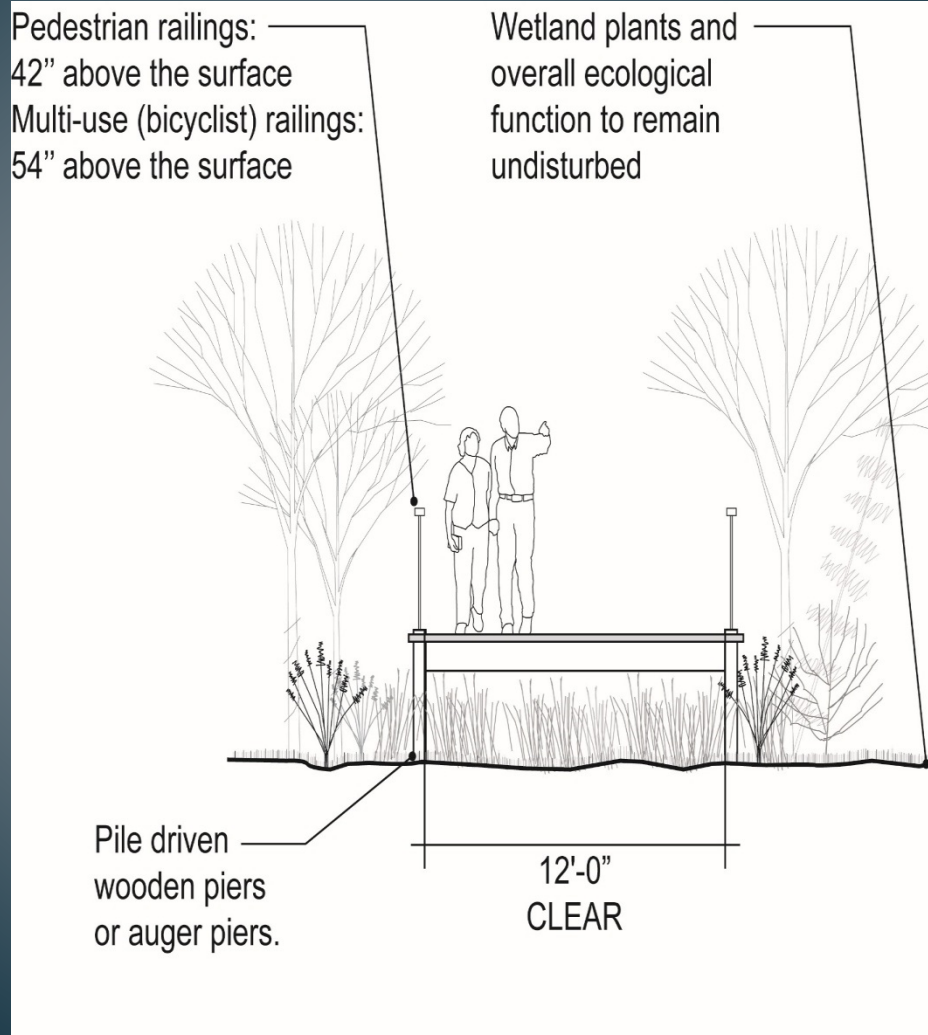
Trail/Waterway Crossings

Wetlands, streams, creeks



Trail Facility Types

Boardwalks

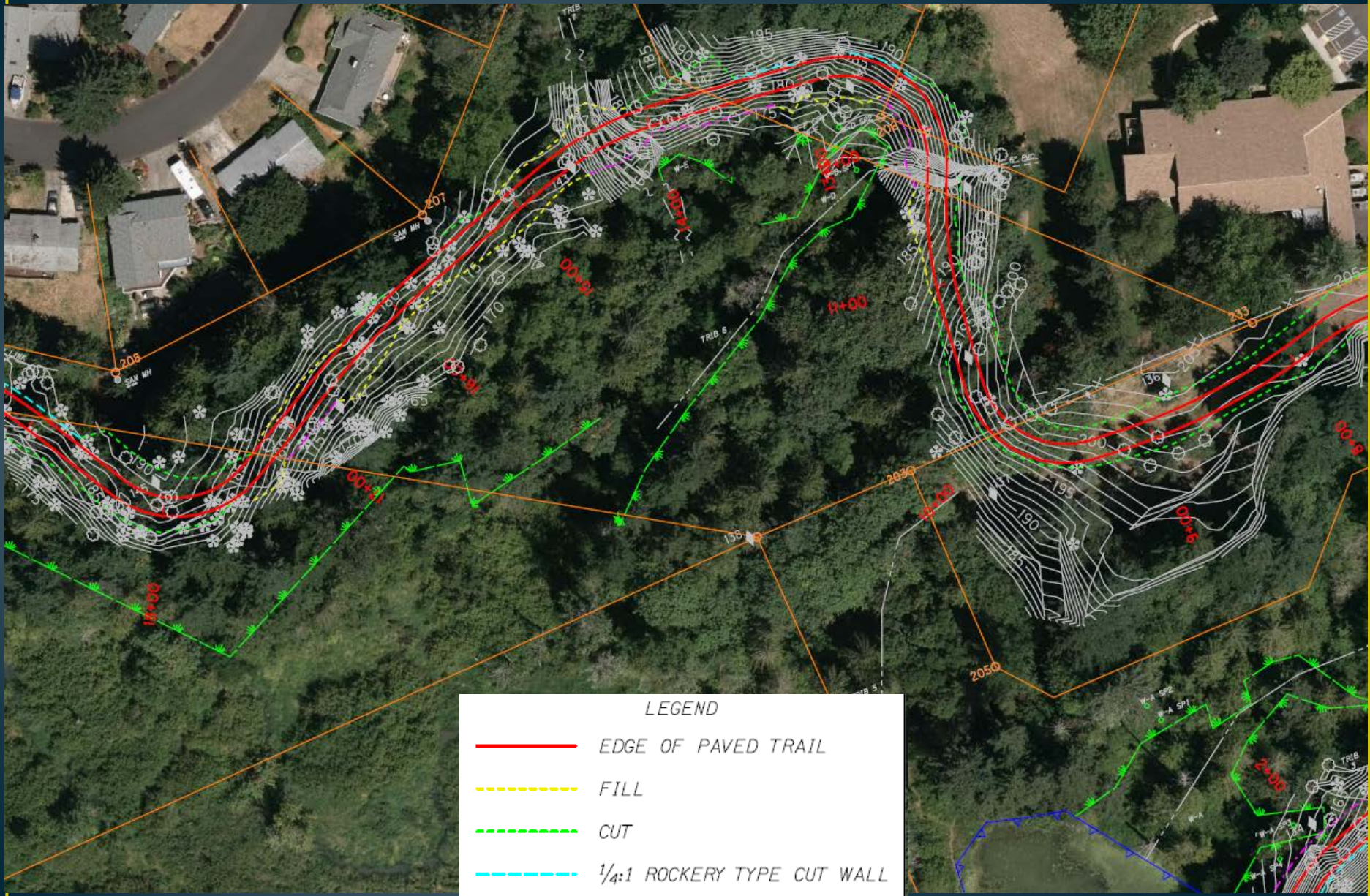




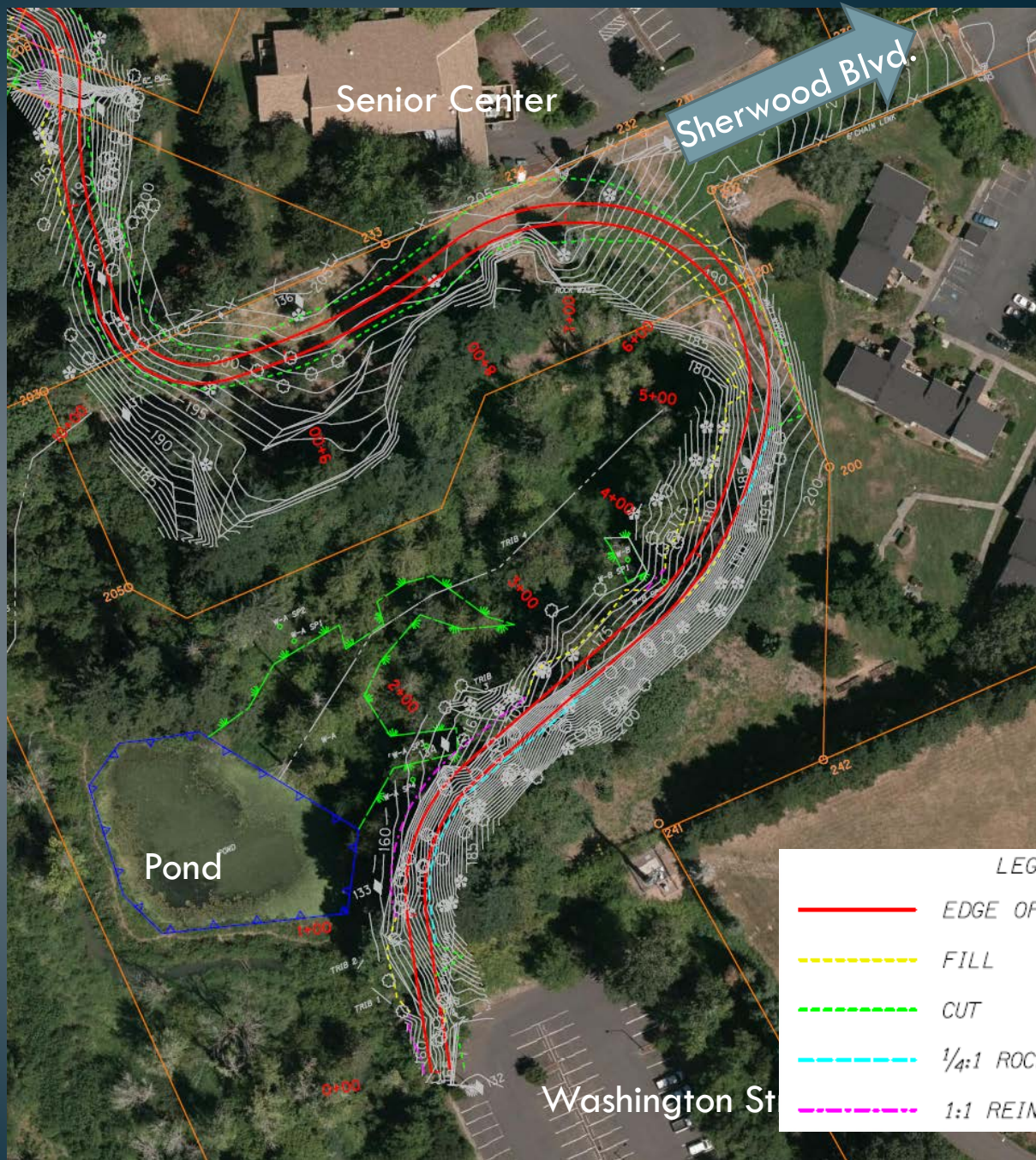
Potential
Neighborhood
Access

Wetland
Boundary

LEGEND	
	EDGE OF PAVED TRAIL
	FILL
	CUT
	1/4:1 ROCKERY TYPE CUT WALL
	1:1 REINFORCED SLOPE



LEGEND	
	EDGE OF PAVED TRAIL
	FILL
	CUT
	1/4:1 ROCKERY TYPE CUT WALL
	1:1 REINFORCED SLOPE





- LEGEND
- EDGE OF PAVED TRAIL
 - FILL
 - CUT
 - 1/2 ROCKERY TYPE CUT WALL
 - 1/2 REINFORCED SLOPE

Pallet
Manufacturer



Trail Facility Types

Shared Use Paths (adjacent to roadways)



- LEGEND
- EDGE OF PAVED TRAIL
 - FILL
 - CUT
 - 1/4:1 ROCKERY TYPE CUT WALL
 - 1:1 REINFORCED SLOPE





LTAC and TTAC comments from Meeting 1

- Wetland buffers/mitigation
- Safety at parking lot at Washington St.
- Adding amenities to trail user experience
- 99W intersection is an important safety improvement
- Be clear on Alexander Road -define where bikes/peds. go
- Property owner issues concerning privacy and safety
- Get hard data on any crime adjacent to trails for Sherwood to help inform neighbors
- Have a wetland mitigation plan in place to clean up invasive species and maintain trail over time
- Crosswalks on Oregon Street important



Questions?