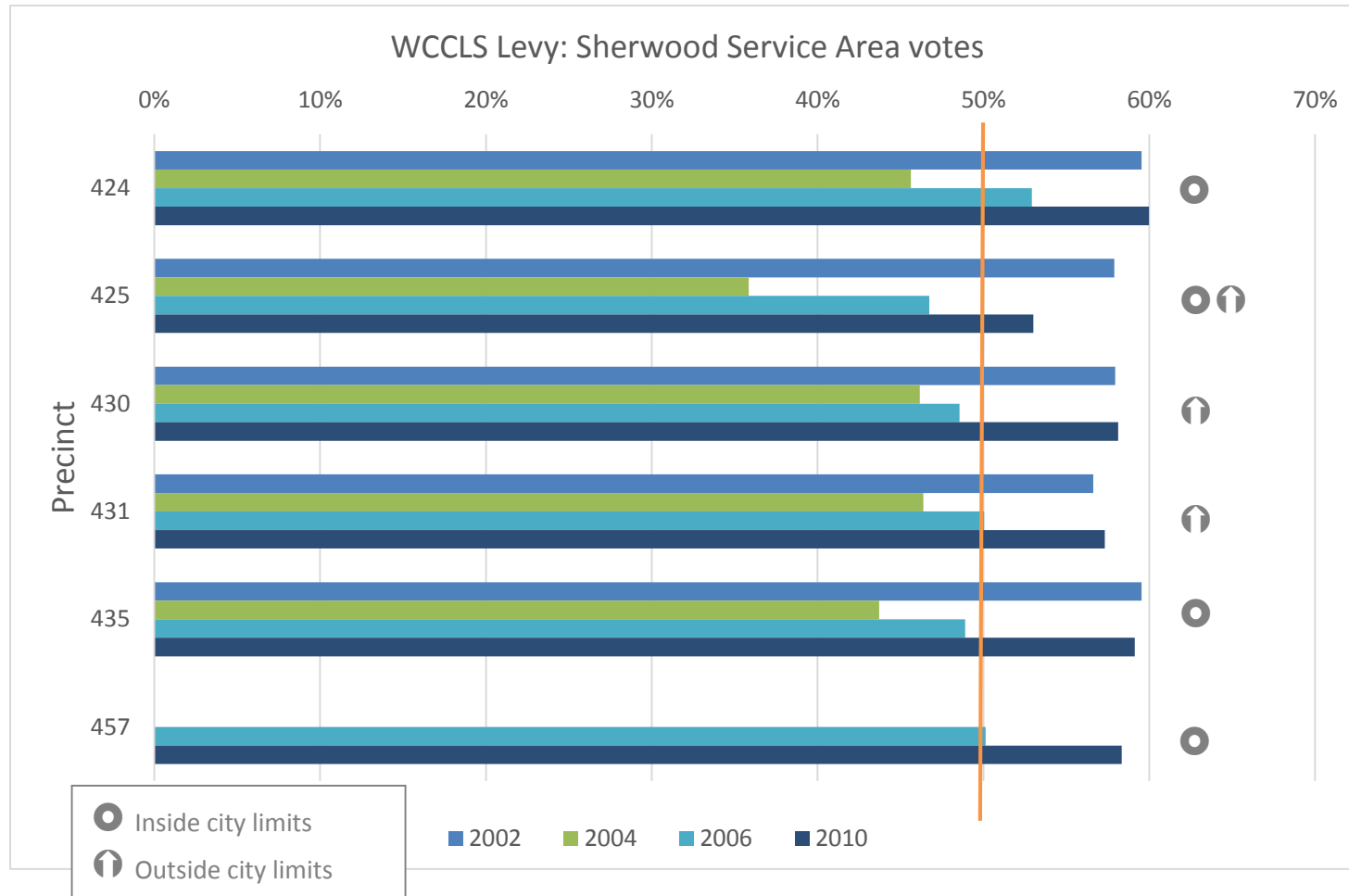


WCCLS 2002-2010 Levy Votes analysis for Sherwood Public Library



Consideration in 2015 Levy Election: Areas of population growth since last election in precinct 425. The 2010 Election passed in that precinct by only 30 votes: 264 to 234. Also of concern: precinct 430 passed by only 52 votes in 2010.

Total Washington County Library Levy 2010 Results

Washington County Library Services (#34-180)

Yes 118,477 = 65.92%

No. 61,260 = 34.08%

Historical Sherwood Service Area votes by precinct

WCCLS Levy: Sherwood

Service Area votes

	2002	2004	2006	2010	
424	60%	46%	53%	60%	○
425	58%	36%	47%	53%	○ ↑
430	58%	46%	49%	58%	↑
431	57%	46%	50%	57%	↑
435	60%	44%	49%	59%	○
457			50%	58%	○
Total	59%	45%	50%	59%	

○ Inside city limits

↑ Outside city limits

2002 WCCLS Levy: Sherwood Service Area votes

	Yes	No	%	
424	4081	2773	60%	○
425	587	427	58%	○ ↑
430	394	286	58%	↑
431	1449	1110	57%	↑
435	3161	2149	60%	○
457	n/a			
Total	9672	6745	59%	

Failed across county

2004 WCCLS Levy: Sherwood Service Area votes

	Yes	No	%	
424	646	770	46%	○
425	81	145	36%	○ ↑
430	84	98	46%	↑
431	301	348	46%	↑
435	459	591	44%	○
457	n/a			

Total 1571 1952 45%

Failed because the election did not net 50% voter turnout

2006 WCCLS Levy: Sherwood Service Area votes

	Yes	No	%	
424	1315	1170	53%	○
425	207	236	47%	○ ↑
430	152	161	49%	↑
431	580	579	50%	↑
435	1165	1218	49%	○
457	583	580	50%	○

Total 4002 3944 50%

Passed, 57% approval across county

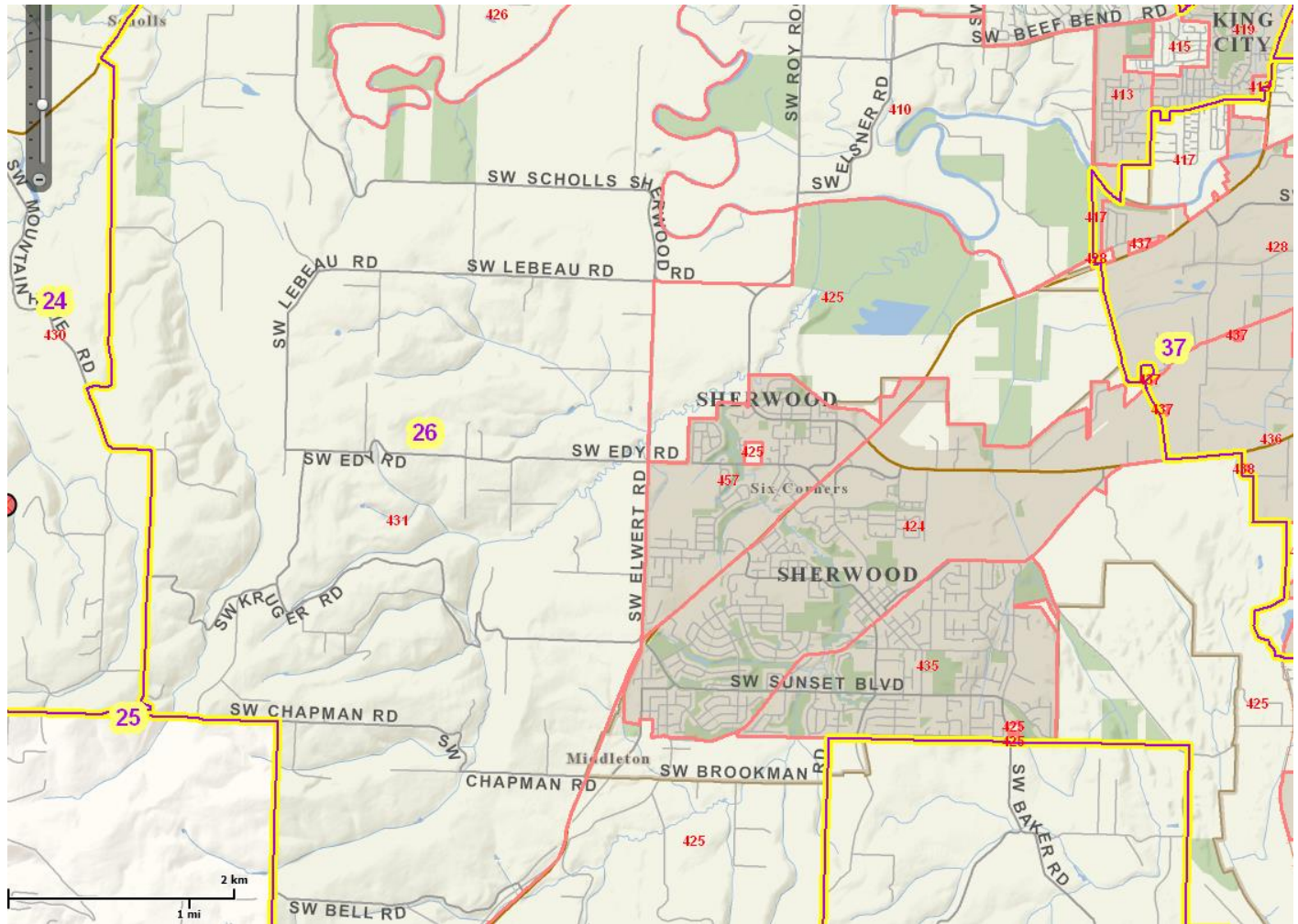
2010 WCCLS Levy: Sherwood Service Area votes

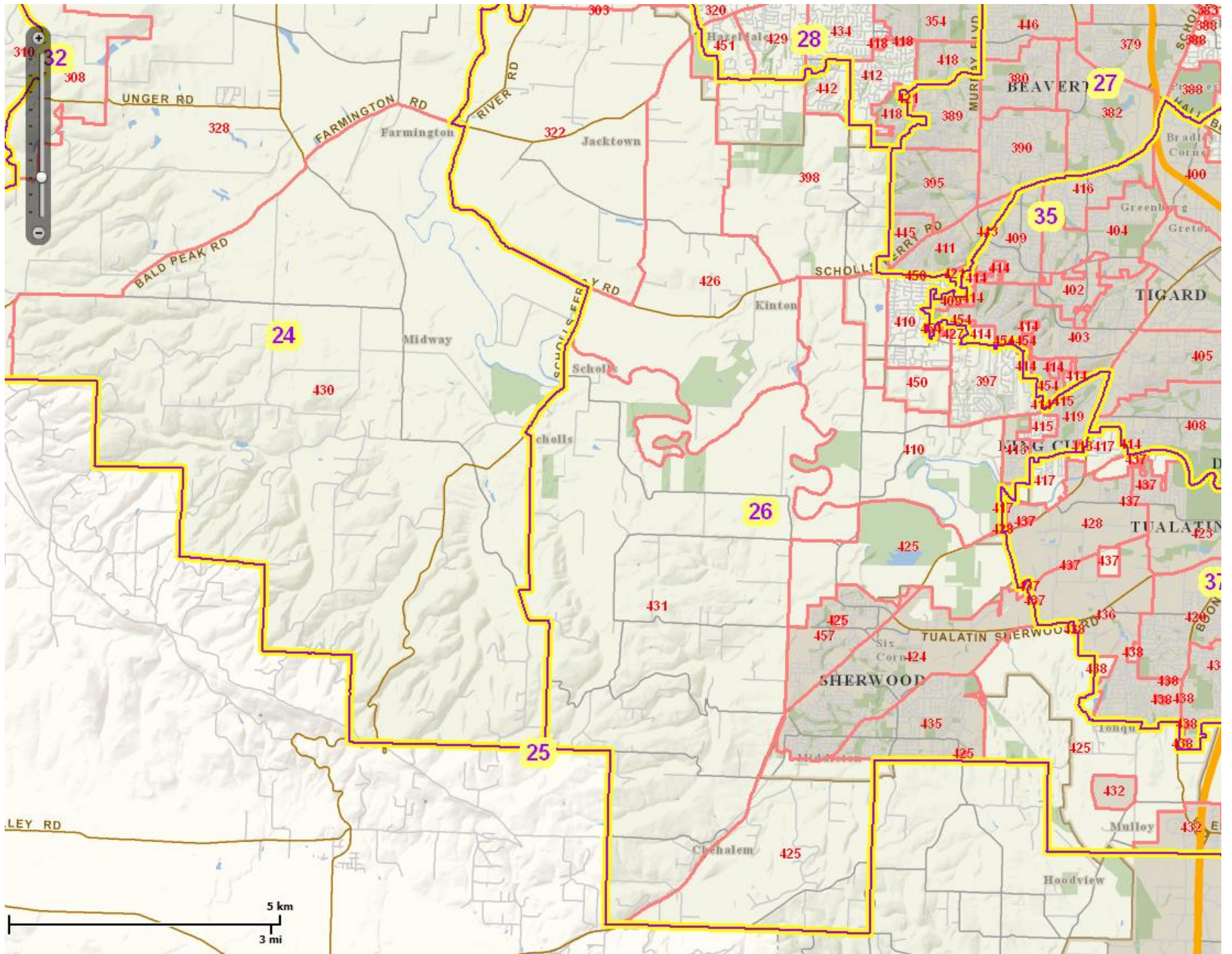
	Yes	No	%	
424	1605	1071	60%	○
425	264	234	53%	○ ↑
430	186	134	58%	↑
431	694	517	57%	↑
435	1441	996	59%	○
457	759	542	58%	○

Total 4949 3494 59%

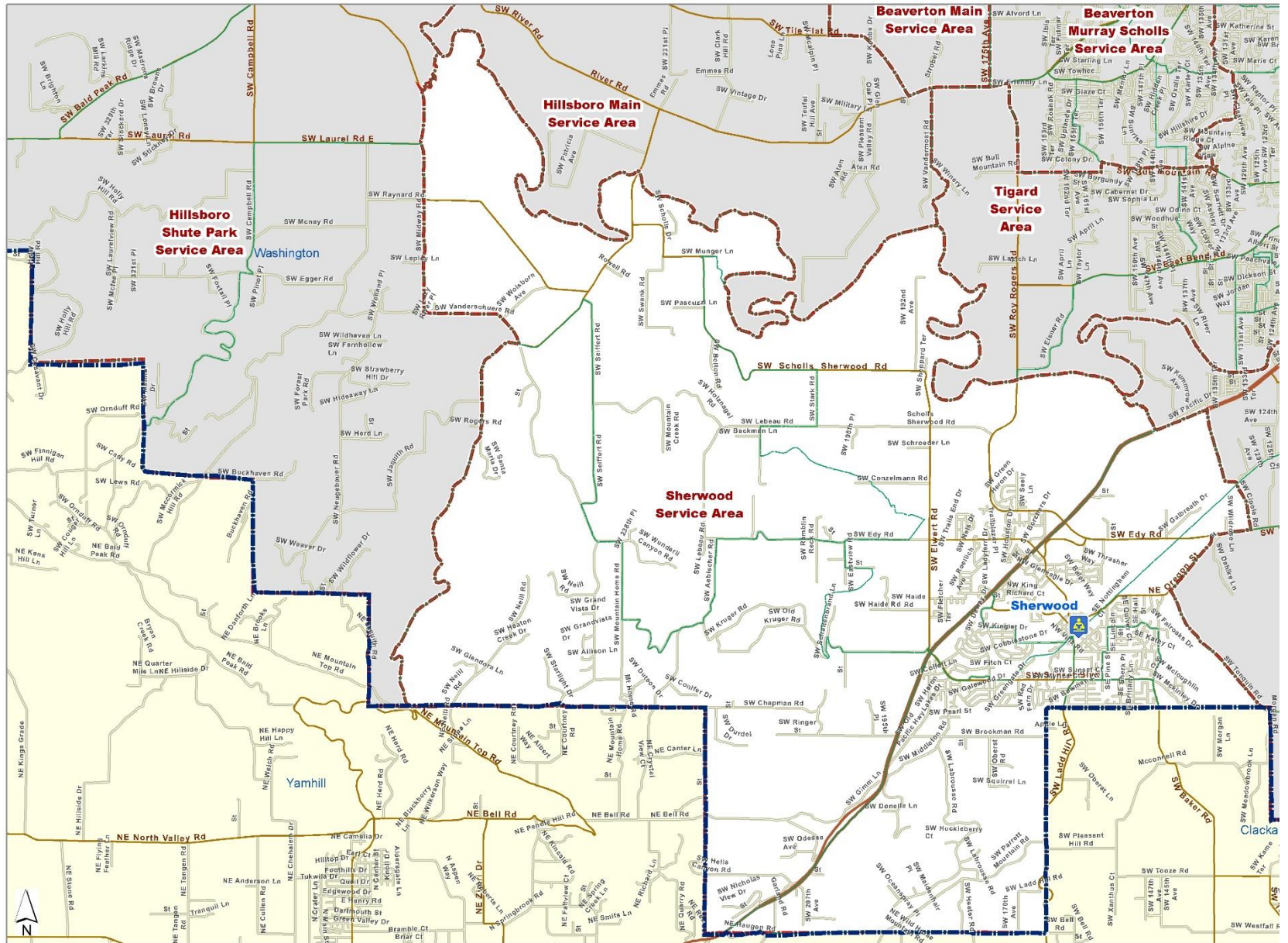
Passed, 66% approval across county

Precinct Map





Sherwood Public Library Service Area



Sherwood Service Area

-  Library Outlet
-  Block Group Boundary
-  Service Area Boundary
-  County Boundary