

# CITY OF SHERWOOD OR



**MAGELLAN ADVISORS**

CITY OF SHERWOOD OR  
TYPICAL SET

COVER

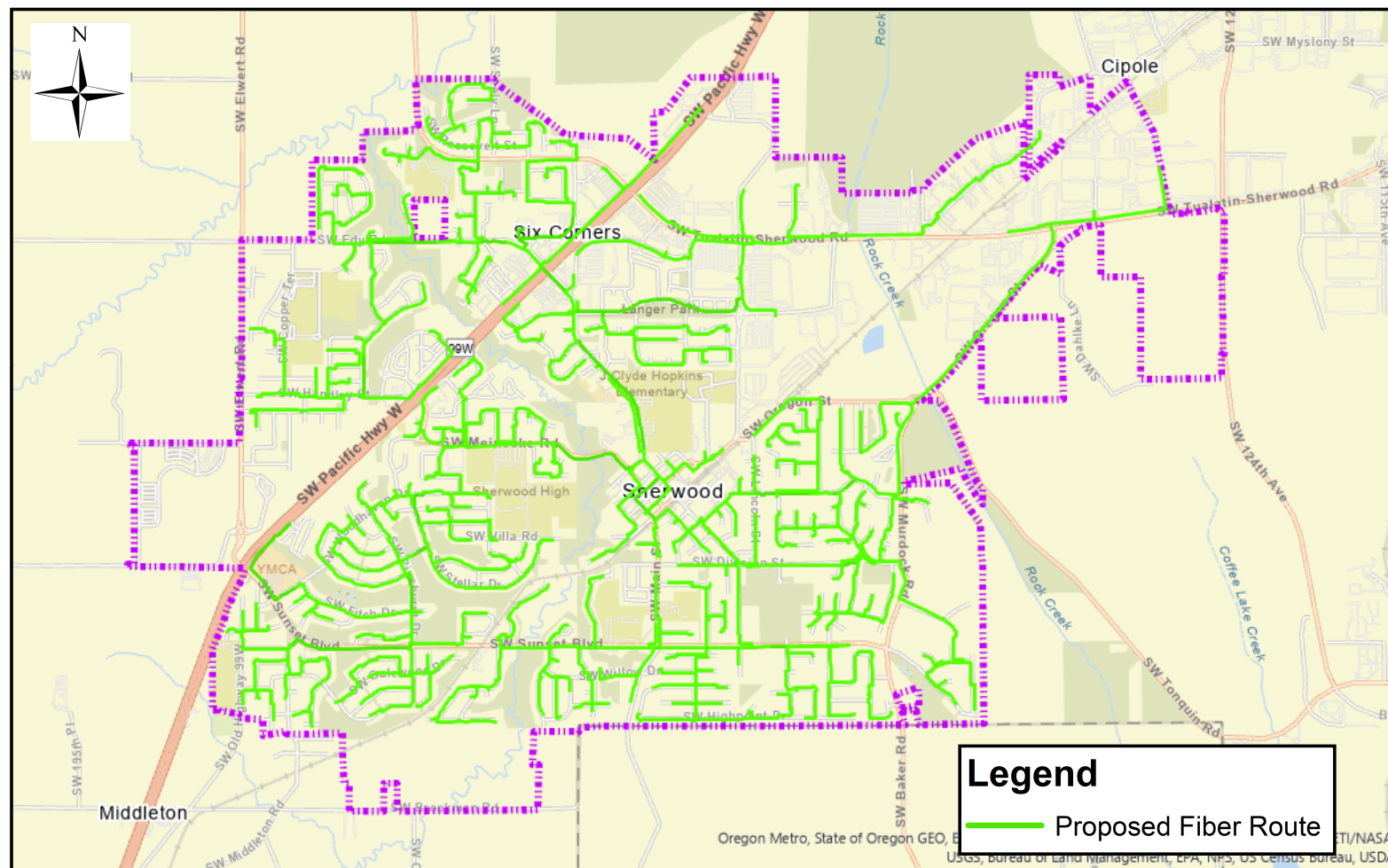
ENGINEER: JW

DRAWN BY: JW

CHECKED BY: JW

**REVISIONS**

DATE	DESCRIPTION	BY
10/28/2021	VERSION 1	John Williams



LOCATION MAP  
SCALE: N.T.S.

RECOMMENDED FOR APPROVAL OF CONSTRUCTION

\_\_\_\_\_  
DATE PROJECT MANAGER DEPT. OF IT

RECOMMENDED FOR APPROVAL OF CONSTRUCTION

\_\_\_\_\_  
DATE CONSTRUCTION PROJECT MANAGER DEPT. OF IT

RECOMMENDED FOR APPROVAL OF CONSTRUCTION

\_\_\_\_\_  
DATE ASST CITY ENGINEER DEPT PUBLIC WORKS

APPROVED FOR CONSTRUCTION

\_\_\_\_\_  
DATE CITY ENGINEER DEPT PUBLIC WORKS

**\*\*\*\*NOTE\*\*\*\***  
UTILITY & R.O.W. REPRESENTED ON PLANS ARE BASED ON RECORDS INFORMATION. NOT BASED ON BOUNDARY SURVEY & FIELD EXPOSURES.

**CAUTION!!!**  
CONTRACTOR TO LOCATE & VERIFY ALL EXISTING UTILITIES PRIOR TO CONSTRUCTION

**\*\*\*\* NOTE \*\*\*\***  
ALL UTILITIES MUST BE VERIFIED BY POTHOLING

**CAUTION!!!**  
EXIST. BURIED FIBER, TELEPHONE, CATV, GAS, ELECTRIC, WATER, SANITARY SEWER & STORM SEWER FACILITIES IN CONSTRUCTION ARE AND HAVE NOT BEEN FIELD LOCATED, CONTRACTOR TO VERIFY EXACT LOCATION AND DEPTH PRIOR TO ANY DIGGING AND/OR BORING

CALL BEFORE YOU DIG  
1-800-245-4545  
48 HOURS NOTICE REQUIRED

# ABBREVIATIONS

DB	DIRECTIONAL BORE
ED	EXISTING DUCT
EOP	EDGE OF PAVEMENT
FOC	FIBER OPTIC CABLE
HDD	HORIZONTAL DIRECTIONAL DRILL
HDPE	HIGH DENSITY POLY ETHYLENE
HH	HAND HOLE (VAULT)
HUT	LOCATION WITH ACTIVE ELECTRONICS FEEDING FIBER
LCP	LOCAL CONCENTRATION POINT (PASSIVE CABINET)
MCA	MID CABLE ACCESS (SPLICE POINT)
MDU	MULTI DWELLING UNIT
NAP	NETWORK ACCESS POINT
POP	POINT OF PRESENCE (HUT)
ROW	RIGHT OF WAY

**MAGELLAN ADVISORS**

CITY OF SHERWOOD OR  
TYPICAL SET

ABBREVIATIONS

ENGINEER: JW

DRAWN BY: JW

CHECKED BY: JW

**REVISIONS**

DATE	DESCRIPTION	BY
10/28/2021	VERSION 1	John Williams

**\*\*\*\*NOTE\*\*\*\***  
UTILITY & R.O.W. REPRESENTED ON  
PLANS ARE BASED ON RECORDS  
INFORMATION. NOT BASED ON  
BOUNDARY SURVEY & FIELD EXPOSURES.

**CAUTION!!!**  
CONTRACTOR TO LOCATE &  
VERIFY ALL EXISTING UTILITIES  
PRIOR TO CONSTRUCTION

**\*\*\*\* NOTE \*\*\*\***  
ALL UTILITIES MUST  
BE VERIFIED BY  
POTHOLING

**CAUTION!!!**  
EXIST. BURIED FIBER, TELEPHONE, CATV, GAS, ELECTRIC, WATER, SANITARY  
SEWER & STORM SEWER FACILITIES IN CONSTRUCTION ARE AND HAVE NOT  
BEEN FIELD LOCATED, CONTRACTOR TO VERIFY EXACT LOCATION AND DEPTH  
PRIOR TO ANY DIGGING AND/OR BORING



DATE: 10/28/2021

SHEET: 2 OF 17

FILE: Sherwood Typicals.pdf

ENGINEER: JW

DRAWN BY: JW

CHECKED BY: JW

**REVISIONS**

DATE	DESCRIPTION	BY
10/28/2021	VERSION 1	John Williams

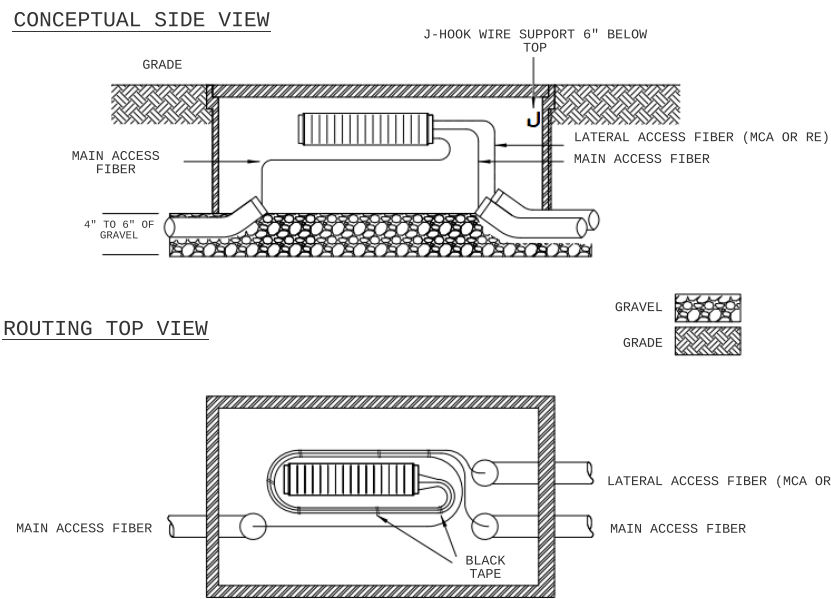
DATE: 10/28/2021

SHEET: 3 OF 17

FILE: Sherwood Typicals.pdf

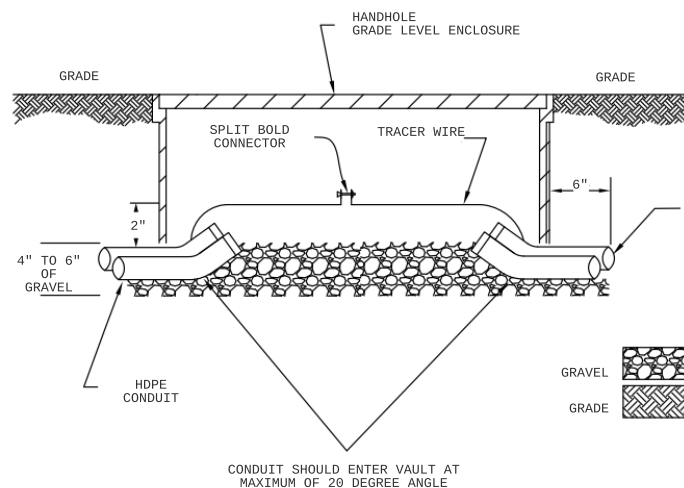
# TYPICALS

## SPLICE CLOSURE DETAIL



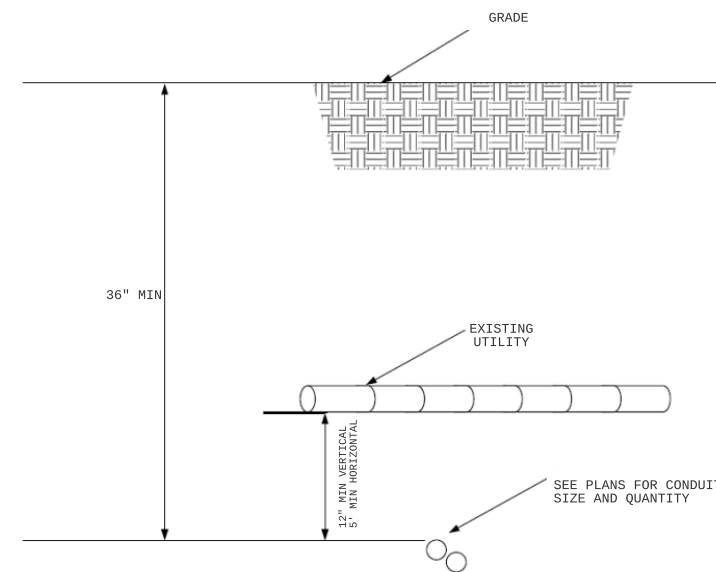
- NOTES:
1. FOR MAIN ACCESS FIBER (MCA) LEAVE 100FT OF SLACK FROM CONDUIT TO CONDUIT. FOR LATERAL ACCESS OR BUTT SPLICES LEAVE 55FT OF SLACK FROM ENDO OF CONDUIT. ROUTE MAIN LATERAL AND DROP CABLES TOGETHER FROM CONDUIT TO CLOSURES. DO NOT EXCEED MINIMUM CABLE BEND RADIUS. CONDUITS MUST NOT EXTEND MORE THAN 2" ABOVE GRAVEL.
  2. J-HOOK WIRE SUPPORTS SHALL BE SECURELY ATTACHED TO THE JUNCTION BOX WITH A BOLD AND NUT WITH A NEOPRENE WASHER OR AN EXPANSION FITTING. ONE J-HOOK PER PALL SHALL BE INSTALLED FOR ALL VAULTS WITH CLOSURES.
  3. BUTT SPLICES FOR REEL ENDS ARE NOT DESIGNATED ON THE MAP. VAULTS WITH REEL ENDS SHALL BE DESIGNATED ON THE AS-BUILTS.

## GRADE LEVEL HANDHOLE



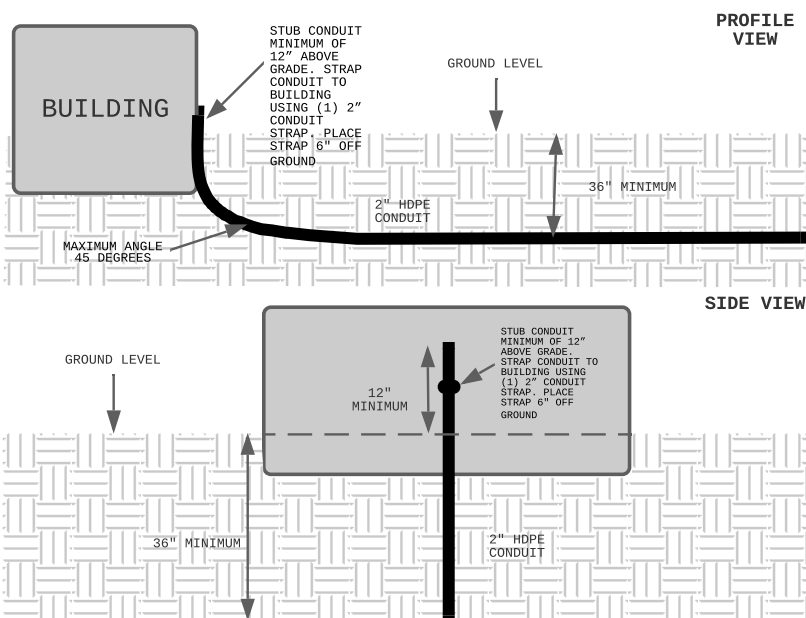
- NOTES:
1. EXCAVATE HANDHOLE 4" - 6" DEEPER THAN THE DEPTH OF THE HANDHOLE.
  2. THE 4" TO 6" OF GRAVEL SHALL BE PLACED IN HOLE.
  3. THE HANDHOLE SHALL BE PLACED IN HOLE WITH TOP AT GRADE LEVEL.
  4. THE HOLE SURROUNDING HANDHOLE SHALL BE WILLED AND COMPACTED AT GRADE LEVEL.

## UTILITY CROSSING



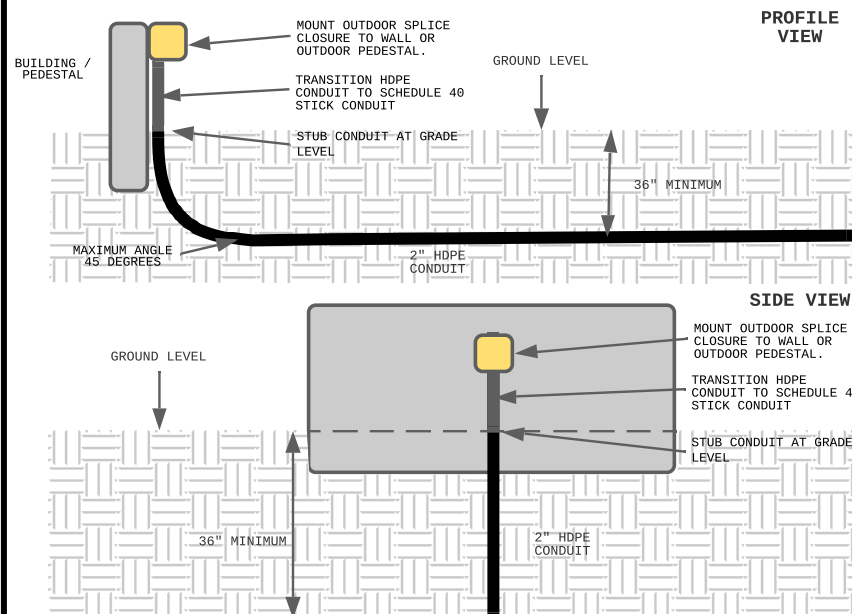
- NOTES:
1. MAINTAIN 5' HORIZONTAL SEPARATION FROM ALL UTILITIES
  2. MAINTAIN 12" VERTICAL SEPARATION FROM ALL UTILITIES
- IF HORIZONTAL SEPARATION IS NOT POSSIBLE BORE 12" BELOW UTILITY AND MAINTAIN 12" VERTICAL SEPARATION.

## BUILDING ENTRANCE



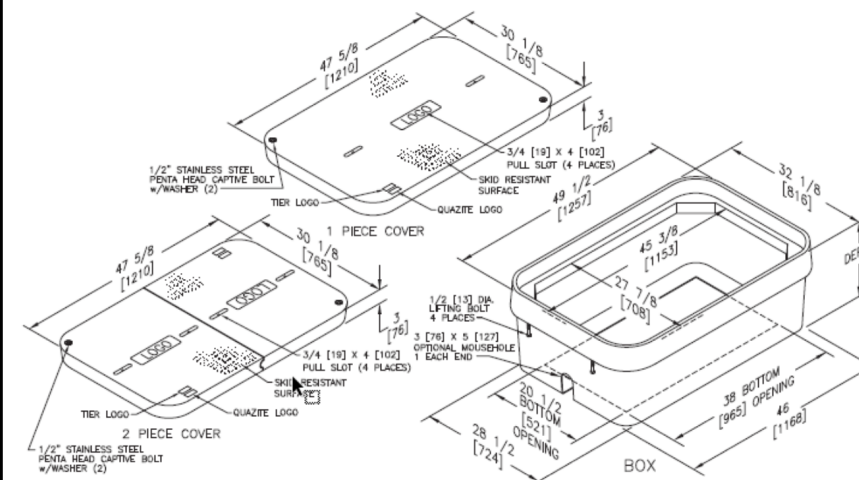
- NOTES:
1. COORDINATION WITH THE PROJECT MANAGER SHOULD BE MADE BEFORE CONDUIT IS RAN TO ANY FACILITY. EXTERIOR BUILDING CONDUIT, PULL BOXES, CORE DRILLS, AND FIBER PULL LENGTH ARE DEPENDENT ON EACH FACILITY.

## OUTDOOR WALL/PEDESTAL CLOSURE



- NOTES:
1. COORDINATION WITH THE PROJECT MANAGER SHOULD BE MADE BEFORE CONDUIT IS RAN TO ANY FACILITY. EXTERIOR BUILDING CONDUIT, PULL BOXES, CORE DRILLS, AND FIBER PULL LENGTH ARE DEPENDENT ON EACH FACILITY.

## VAULT LID



- NOTES:
1. PULL BOXES AND LIDS SHALL HAVE A MINIMUM ANSI/SCTE 77-2017 TIER 15 DESIGNATION FOR VAULTS PLACED IN GRASS, SIDEWALKS, OR NON-PAVED AREAS.
  2. PULL BOXES SHALL BE POLYMER CONCRETE WITH STRAIGHT SIDE OR POLYMER CONCRETE WITH FLARED OR STRAIGHT FIBERGLASS SIDES.
  3. GROUND RODS SHALL BE 8FT ALL COPPER RODS AND PLACED AT THE BOTTOM OF THE PULL BOX.
  4. GROUND RODS SHALL HAVE A BONDING CLAMP INSTALLED ON THEM WITH A MINIMUM OF 15FT OF 12 AWG TRACE WIRE CONNECTED TO THE BONDING CLAMP. THE TRACE WIRE FROM THE GROUND IS NOT TO BE CONNECTED TO THE CONTINUOUS TRACE WIRE EXCEPT AT DEAD END PULL BOXES.
  5. REFER TO "GROUNDING" IN THE CONSTRUCTION NOTES FOR DETAILS ON GROUND ROD PLACEMENT.
  6. ALL LIDS SHALL INDICATE "SHERWOOD FIBER"

**\*\*\*\*NOTE\*\*\*\***

UTILITY & R.O.W. REPRESENTED ON PLANS ARE BASED ON RECORDS INFORMATION. NOT BASED ON BOUNDARY SURVEY & FIELD EXPOSURES.

**CAUTION!!!**  
CONTRACTOR TO LOCATE & VERIFY ALL EXISTING UTILITIES PRIOR TO CONSTRUCTION

**\*\*\*\* NOTE \*\*\*\***  
ALL UTILITIES MUST BE VERIFIED BY POTHOLES

**CAUTION!!!**  
EXIST. BURIED FIBER, TELEPHONE, CATV, GAS, ELECTRIC, WATER, SANITARY SEWER & STORM SEWER FACILITIES IN CONSTRUCTION ARE AND HAVE NOT BEEN FIELD LOCATED, CONTRACTOR TO VERIFY EXACT LOCATION AND DEPTH PRIOR TO ANY DIGGING AND/OR BORING





ENGINEER: JW

DRAWN BY: JW

CHECKED BY: JW

**REVISIONS**

DATE	DESCRIPTION	BY
10/28/2021	VERSION 1	John Williams

DATE: 10/28/2021

SHEET: 4 OF 17

FILE: Sherwood Typicals.pdf

**FIBER DISTRIBUTION CABINET:**

ALL FIBER DISTRIBUTION CABINETS, ALSO KNOWN AS LOCAL CONCENTRATION CABINETS (LCC) OR FIBER DISTRIBUTION HUBS (FDH) SHALL BE MOUNTED ON A 24" X 36" VAULT. THE VAULT SHALL MOUNT DIRECTLY TO THE VAULT LID. THIS PROJECT WILL BE USING CLEARFIELD 288 FDH CABINETS. WHEN ORDERING THE CABINETS SPECIFY THE 24" X 36" VAULT MOUNTING KIT.

WHEN MOUNTING THE FDH BASES TO A POLYMER CONCRETE LID, FOUR 3/8-16 BOLTS ARE NEEDED (BOLT KIT PART NUMBER 020538). SHOWN ARE DIAGRAMS FEATURING THE SPACING FOR ANCHOR POINTS FOR FDH CABINET BASES ON HALF OF THE PAD.

THE THREADED HOLE INSERTS SHOWN IN THESE DIAGRAMS ARE USED FOR MOUNTING THE CABINET BASE/RISER TO THE LID.

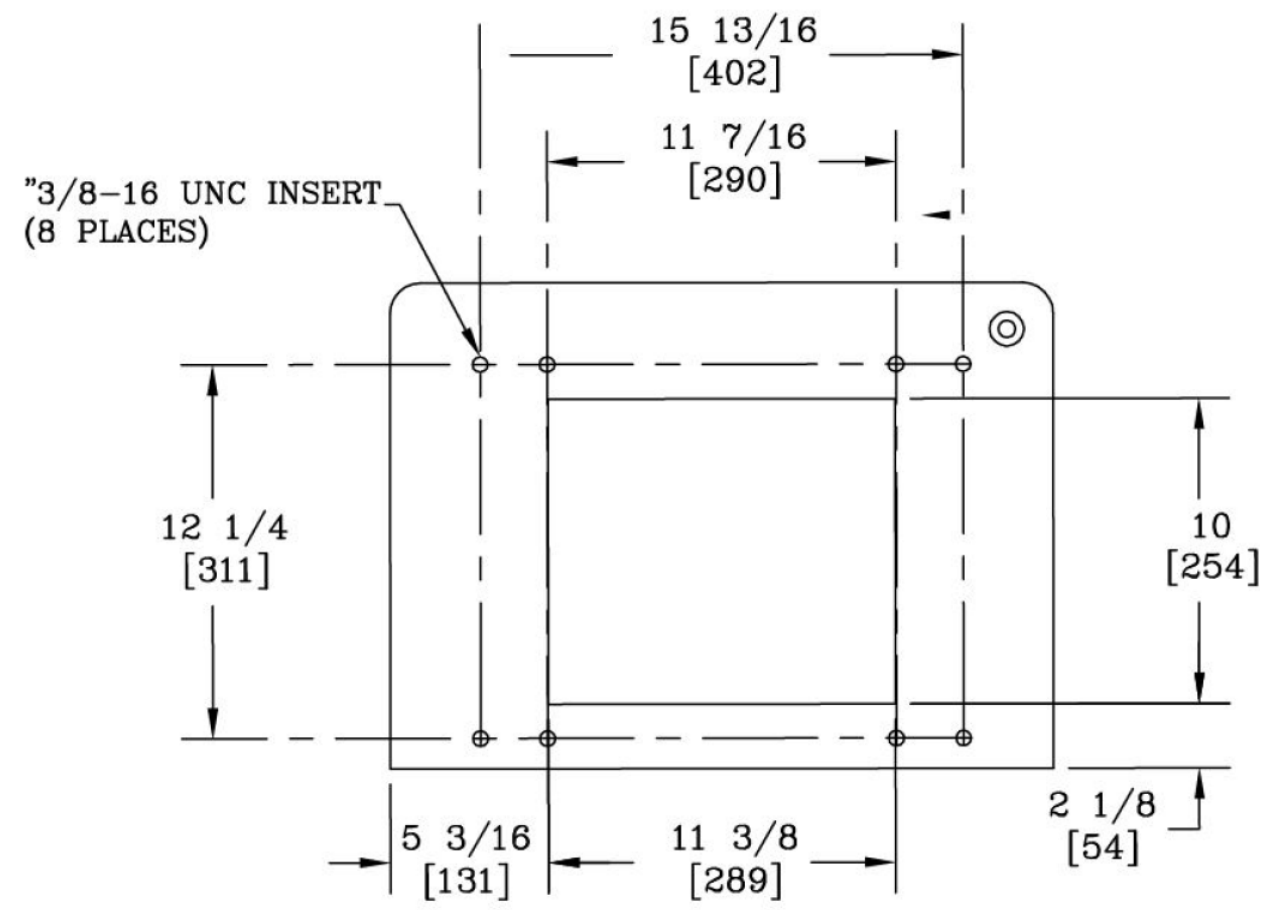
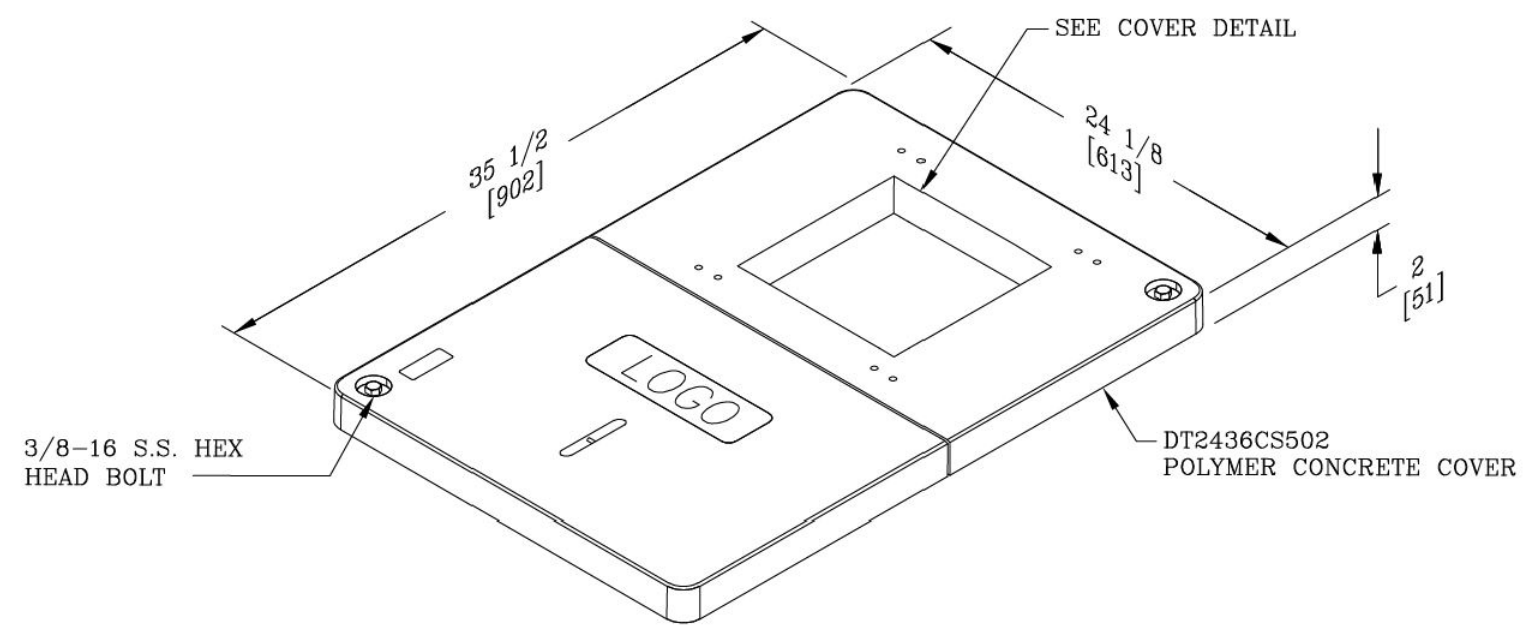
NOTE: UNITS IN INCHES, BRACKETED UNITS IN MILLIMETERS. THIS WILL ALLOW FOR THE ANCHORS TO BE SEATED INTO PLACE FIRMLY

THE FOLLOWING ADDITIONAL PART NUMBERS ARE RECOMMENDED FOR THE 288 FDH CABINETS

V6A-CZP VAULT, BELOW GRADE PENCELL, 24" W X 36" L X 24" D (609.60 MM X 914.40 MM X 609.60 MM), SPLIT HDPE LID, HEX BOLTS, GREEN, WITH CUT OUT FOR FIELDSMART CABINETS, STRAIGHT WALL, WITH BOLT KIT

V6B-CZP VAULT, BELOW GRADE PENCELL, 24" W X 36" L X 36" D (609.60 MM X 914.40 MM X 914.40 MM), SPLIT HDPE LID, HEX BOLTS, GREEN, WITH CUT OUT FOR FIELDSMART CABINETS, STRAIGHT WALL, WITH BOLT KIT

V6B-HZP VAULT, BELOW GRADE PENCELL, 24" W X 36" L X 36" D (609.60 MM X 914.40 MM X 914.40 MM), SPLIT PC LID, HEX BOLTS, GRAY, WITH CUT OUT FOR FIELDSMART CABINETS, STRAIGHT WALL



**\*\*\*\*NOTE\*\*\*\***  
UTILITY & R.O.W. REPRESENTED ON PLANS ARE BASED ON RECORDS INFORMATION. NOT BASED ON BOUNDARY SURVEY & FIELD EXPOSURES.

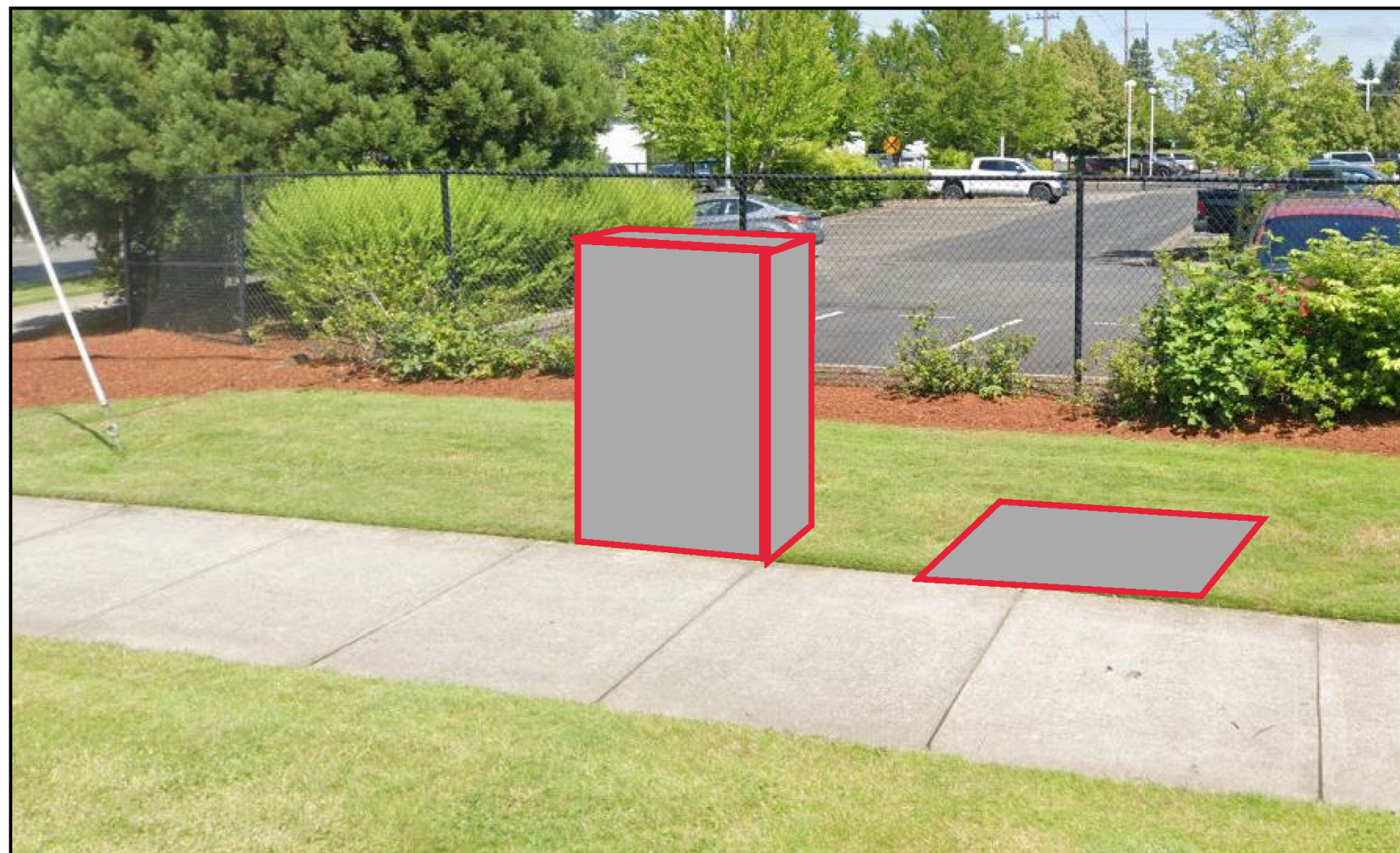
**CAUTION!!!**  
CONTRACTOR TO LOCATE & VERIFY ALL EXISTING UTILITIES PRIOR TO CONSTRUCTION

**\*\*\*\* NOTE \*\*\*\***  
ALL UTILITIES MUST BE VERIFIED BY POTHOLING

**CAUTION!!!**  
EXIST. BURIED FIBER, TELEPHONE, CATV, GAS, ELECTRIC, WATER, SANITARY SEWER & STORM SEWER FACILITIES IN CONSTRUCTION ARE AND HAVE NOT BEEN FIELD LOCATED, CONTRACTOR TO VERIFY EXACT LOCATION AND DEPTH PRIOR TO ANY DIGGING AND/OR BORING







**FIBER DISTRIBUTION CABINET:**

THE TYPICAL FDH CABINET WILL BE INSTALLED ON-TOP OF A VAULT WITH A SEPARATE 24" X 36" VAULT FOR STORAGE OF THE SPLICE CLOSURES.

**MAGELLAN ADVISORS**

CITY OF SHERWOOD OR  
TYPICAL SET

TYPICALS

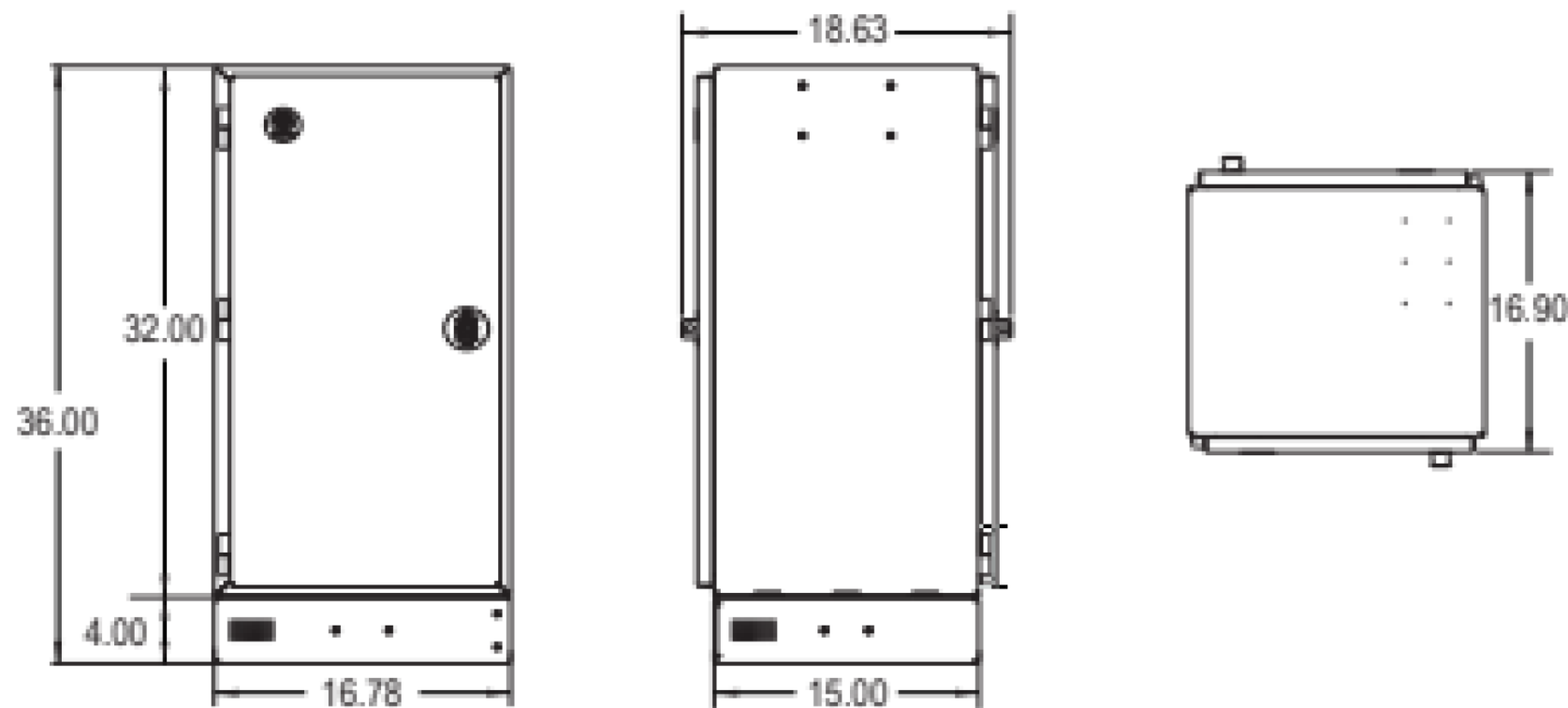
ENGINEER: JW

DRAWN BY: JW

CHECKED BY: JW

**REVISIONS**

DATE	DESCRIPTION	BY
10/28/2021	VERSION 1	John Williams



**\*\*\*\*NOTE\*\*\*\***  
UTILITY & R.O.W. REPRESENTED ON PLANS ARE BASED ON RECORDS INFORMATION. NOT BASED ON BOUNDARY SURVEY & FIELD EXPOSURES.

**CAUTION!!!**  
CONTRACTOR TO LOCATE & VERIFY ALL EXISTING UTILITIES PRIOR TO CONSTRUCTION

**\*\*\*\* NOTE \*\*\*\***  
ALL UTILITIES MUST BE VERIFIED BY POTHOLING

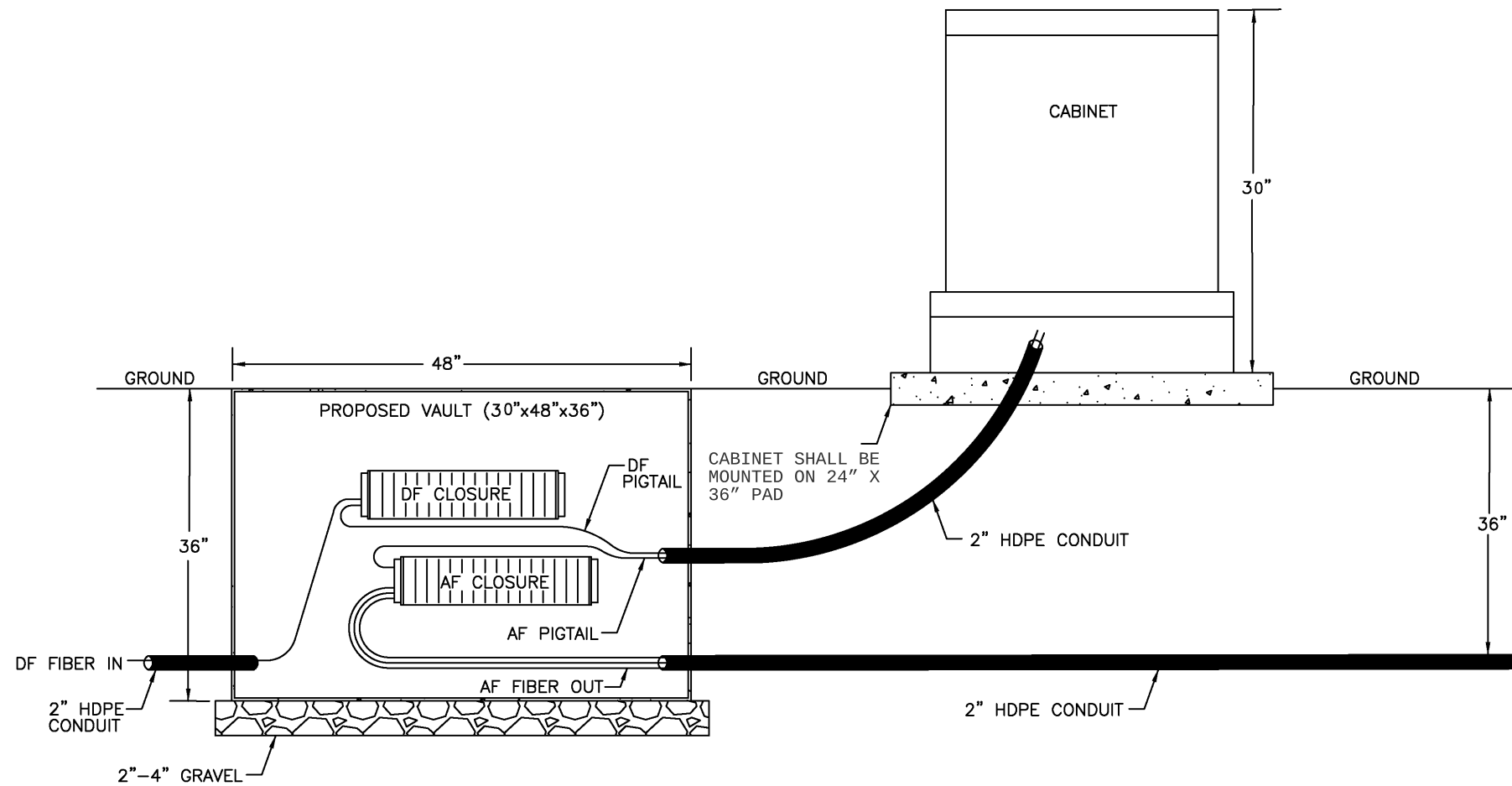
**CAUTION!!!**  
EXIST. BURIED FIBER, TELEPHONE, CATV, GAS, ELECTRIC, WATER, SANITARY SEWER & STORM SEWER FACILITIES IN CONSTRUCTION ARE AND HAVE NOT BEEN FIELD LOCATED, CONTRACTOR TO VERIFY EXACT LOCATION AND DEPTH PRIOR TO ANY DIGGING AND/OR BORING



DATE: 10/28/2021

SHEET: 5 OF 17

FILE: Sherwood Typicals.pdf



THE TYPICAL FDH CABINET WILL BE CONCRETE PAD MOUNTED WITH AN SEPARATE/ADJACENT 36" X 48" VAULT FOR STORAGE OF SPLICE CLOSURES AND STORAGE. FDH CABINET INSTALLED WITH PRETERMINATED 100' SC/APC TAILS, 24 FEEDER FIBER STRANDS, 288 DISTRIBUTION FIBER STRANDS UNLESS INDICATED OTHERWISE.

**MAGELLAN ADVISORS**

CITY OF SHERWOOD OR  
TYPICAL SET

TYPICALS

ENGINEER: JW

DRAWN BY: JW

CHECKED BY: JW

**REVISIONS**

DATE	DESCRIPTION	BY
10/28/2021	VERSION 1	John Williams

**\*\*\*\*NOTE\*\*\*\***  
UTILITY & R.O.W. REPRESENTED ON PLANS ARE BASED ON RECORDS INFORMATION. NOT BASED ON BOUNDARY SURVEY & FIELD EXPOSURES.

**CAUTION!!!**  
CONTRACTOR TO LOCATE & VERIFY ALL EXISTING UTILITIES PRIOR TO CONSTRUCTION

**\*\*\*\* NOTE \*\*\*\***  
ALL UTILITIES MUST BE VERIFIED BY POTHOLING

**CAUTION!!!**  
EXIST. BURIED FIBER, TELEPHONE, CATV, GAS, ELECTRIC, WATER, SANITARY SEWER & STORM SEWER FACILITIES IN CONSTRUCTION ARE AND HAVE NOT BEEN FIELD LOCATED, CONTRACTOR TO VERIFY EXACT LOCATION AND DEPTH PRIOR TO ANY DIGGING AND/OR BORING



DATE: 10/28/2021

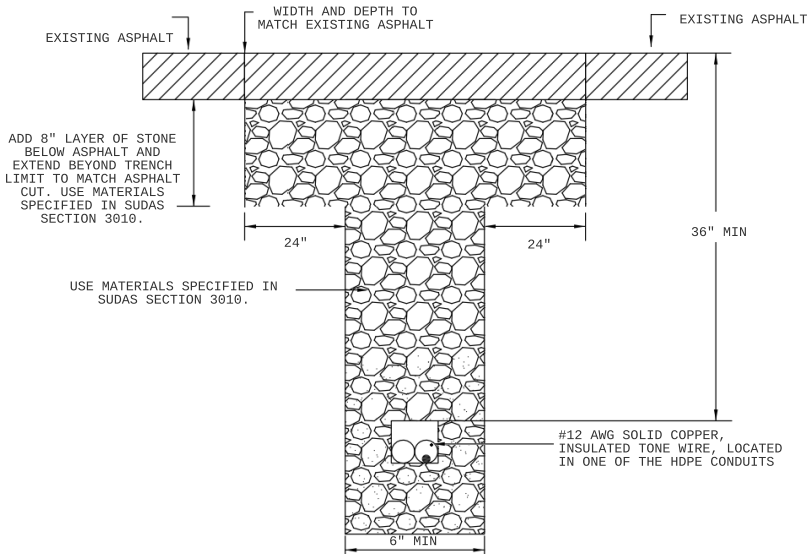
SHEET: 6 OF 17

FILE: Sherwood Typicals.pdf



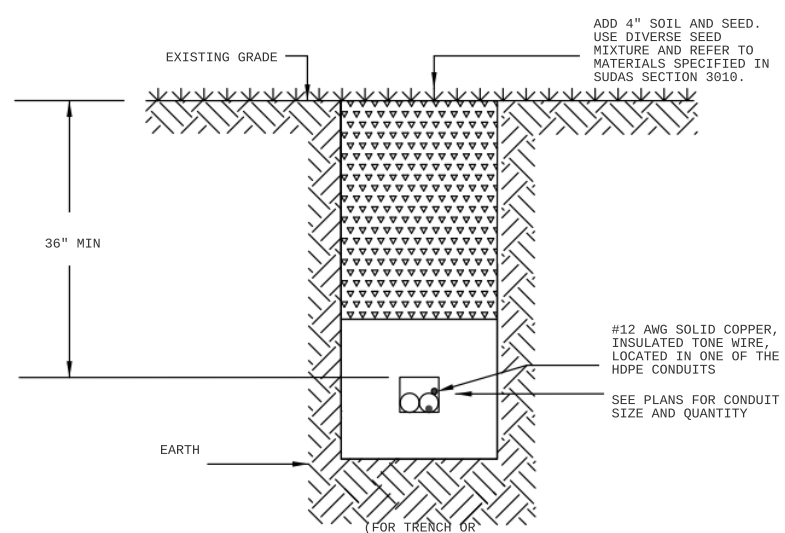
# TYPICALS

## PAVEMENT CUT



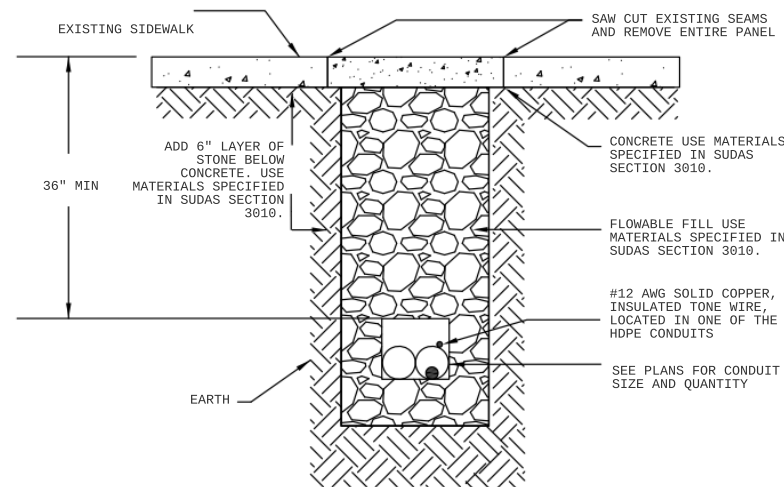
- NOTES:
1. THE BOTTOM OF THE TRENCH SHALL BE LEVEL.
  2. ALL BACKFILL MUST BE SPECIFIED IN SUDAS SECTION 3010.
  3. EXCAVATED MATERIAL MAY BE DEEMED SUITABLE BACKFILL BY THE ENGINEER.
  4. 1.5" MINIMUM TOP LIFT OF SM ASPHALT REQUIRED.
  5. CONTRACTOR SHALL INSTALL A 4" - 6" WIDE RED PLASTIC LOCATOR TAPE 12" BELOW FINISHED GRADE AND DIRECTLY ABOVE BURIED CONDUIT.
  6. FOLLOW IOWA STATEWIDE URBAN DESIGN AND SPECIFICATIONS PROGRAM (SUDAS) GUIDELINES FOUND IN SECTION 5 & 9 FOR TRENCH GUIDELINES.

## RESTORATION



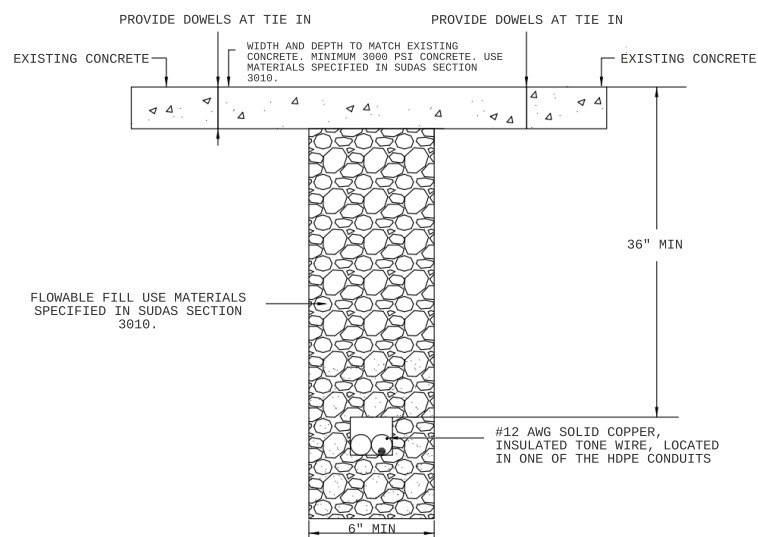
- NOTES:
1. ALL BACKFILL MUST BE SPECIFIED IN SUDAS SECTION 3010.
  2. EXCAVATED MATERIAL MAY BE DEEMED SUITABLE BACKFILL BY AN ENGINEER OR INSPECTOR.
  3. A MAXIMUM OF EIGHT (8) INCHES LIFT OF BACKFILL MATERIAL WILL BE ALLOWED.
  4. THE BOTTOM OF THE TRENCH SHALL BE LEVEL.
  5. ALL DISTURBED GRASS AREAS ARE TO BE SEEDED ACCORDING TO SUDAS SPECIFICATION. SUITABLE MATERIALS SPECIFIED IN SUDAS SECTION 3010.
  6. CONTRACTOR SHALL INSTALL A 4" - 6" WIDE RED PLASTIC LOCATOR TAPE 12" BELOW FINISHED GRADE AND DIRECTLY ABOVE BURIED CONDUIT.
  7. FOLLOW IOWA STATEWIDE URBAN DESIGN AND SPECIFICATIONS PROGRAM (SUDAS) GUIDELINES FOUND IN SECTION 9 FOR TRENCH GUIDELINES.
  8. THE CONTRACTOR MUST SEED ALL DISTURBED AREAS UPON COMPLETION OF PROJECT. THE BLACKHAWK COUNTY RECOMMENDS A DIVERSE SEED MIXTURE; FOR MORE INFORMATION PLEASE CONTACT BLACKHAWK COUNTY (319) 833-3008.

## SIDEWALK CUT



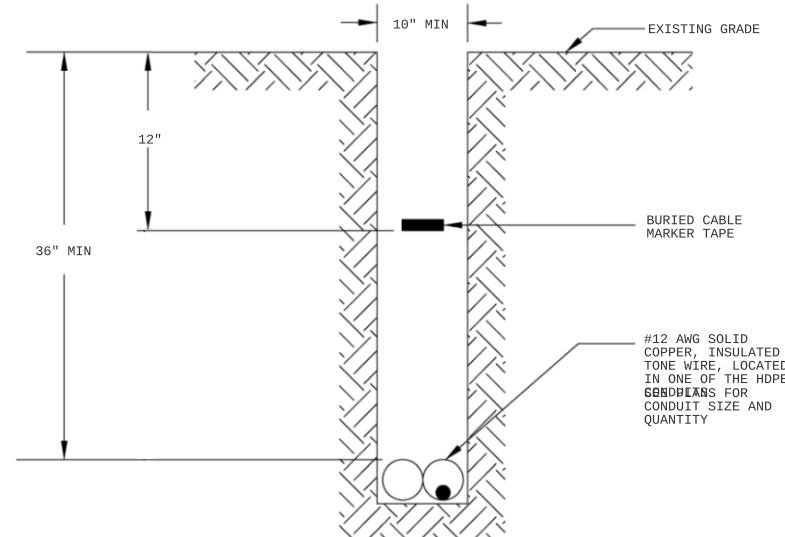
- NOTES:
1. SAW CUT SIDEWALK EDGES ALONG EXISTING SEAMS.
  2. REMOVE ENTIRE SIDEWALK PANEL, JOINT TO JOINT.
  3. THE NEW CONCRETE SIDEWALK SHALL BE PLACED LEVEL AND FLAT TO MATCH EXISTING.
  4. THE FINISH SHALL MATCH EXISTING SIDEWALK.
  5. BOTTOM OF TRENCH SHALL BE LEVEL.
  6. CONTRACTOR SHALL INSTALL A 4" - 6" WIDE RED PLASTIC LOCATOR TAPE 12" BELOW FINISHED GRADE AND DIRECTLY ABOVE BURIED CONDUIT.
  7. FOLLOW IOWA STATEWIDE URBAN DESIGN AND SPECIFICATIONS PROGRAM (SUDAS) GUIDELINES FOUND IN SECTION 9 & 12 FOR TRENCH GUIDELINES.
  8. ALL MATERIAL SELECTION SHALL USE SUDAS SECTION 3010 FOR SPECIFICATIONS.

## CONCRETE CUT



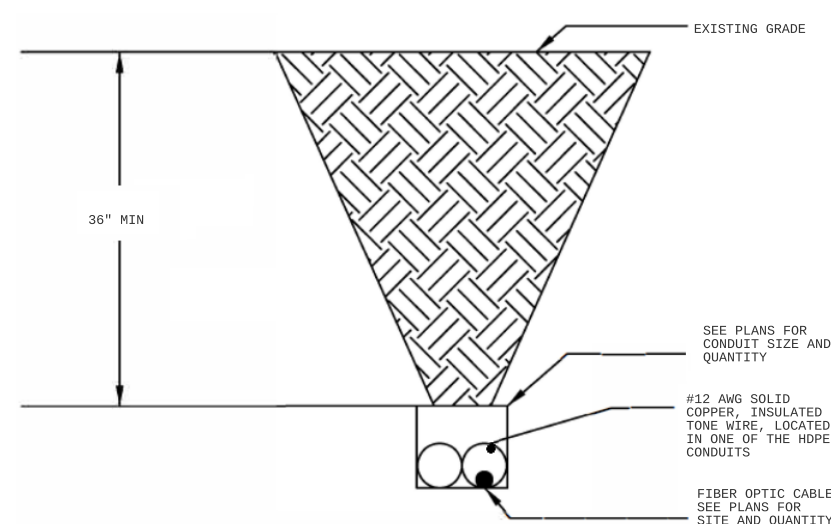
- NOTES:
1. BOTTOM OF TRENCH SHALL BE LEVEL.
  2. CONTRACTOR SHALL INSTALL A 4" - 6" WIDE RED PLASTIC LOCATOR TAPE 12" BELOW FINISHED GRADE AND DIRECTLY ABOVE BURIED CONDUIT.
  3. FOLLOW IOWA STATEWIDE URBAN DESIGN AND SPECIFICATIONS PROGRAM (SUDAS) GUIDELINES FOUND IN SECTION 5 & 9 FOR TRENCH GUIDELINES.

## OPEN TRENCH CROSS SECTION



- NOTES:
1. BOTTOM OF TRENCH SHALL BE LEVEL.
  2. CONTRACTOR SHALL INSTALL A 4" - 6" WIDE RED PLASTIC LOCATOR TAPE 12" BELOW FINISHED GRADE AND DIRECTLY ABOVE BURIED CONDUIT.
  3. FOLLOW IOWA STATEWIDE URBAN DESIGN AND SPECIFICATIONS PROGRAM (SUDAS) GUIDELINES FOUND IN SECTION 9 FOR TRENCH GUIDELINES.

## DIRECTIONAL BORE CROSS SECTION



- NOTES:
1. FOLLOW IOWA STATEWIDE URBAN DESIGN AND SPECIFICATIONS PROGRAM (SUDAS) GUIDELINES FOUND IN SECTION 9 & 14 FOR TRENCH GUIDELINES.

**MAGELLAN ADVISORS**

CITY OF SHERWOOD OR  
TYPICAL SET

TYPICALS

ENGINEER: JW

DRAWN BY: JW

CHECKED BY: JW

### REVISIONS

DATE	DESCRIPTION	BY
10/28/2021	VERSION 1	John Williams

DATE: 10/28/2021

SHEET: 7 OF 17

FILE: Sherwood Typicals.pdf

**\*\*\*\*NOTE\*\*\*\***  
UTILITY & R.O.W. REPRESENTED ON PLANS ARE BASED ON RECORDS INFORMATION. NOT BASED ON BOUNDARY SURVEY & FIELD EXPOSURES.

**CAUTION!!!**  
CONTRACTOR TO LOCATE & VERIFY ALL EXISTING UTILITIES PRIOR TO CONSTRUCTION

**\*\*\*\* NOTE \*\*\*\***  
ALL UTILITIES MUST BE VERIFIED BY POTHOLING

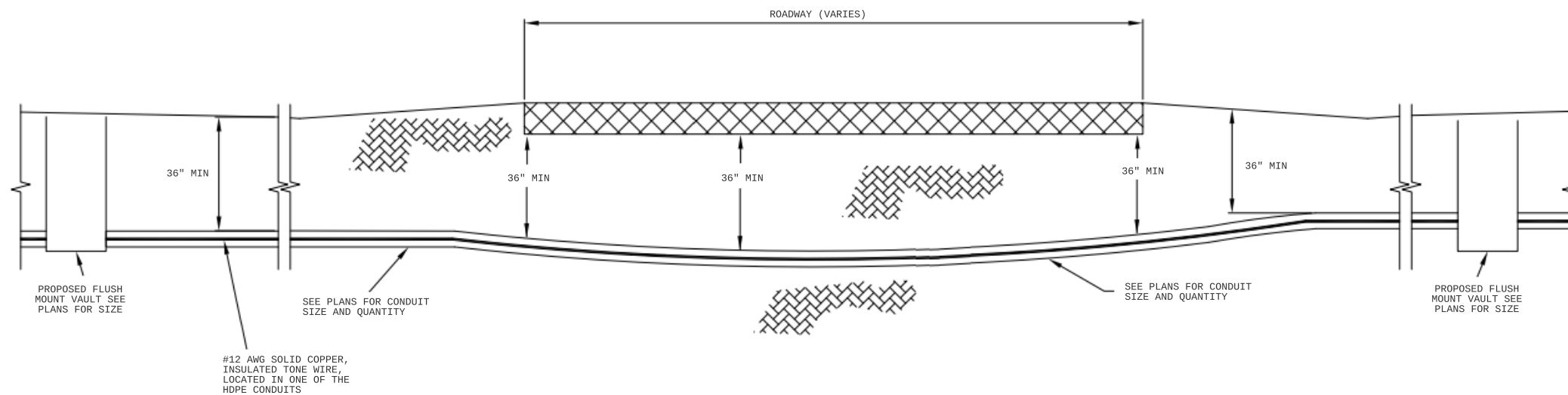
**CAUTION!!!**  
EXIST. BURIED FIBER, TELEPHONE, CATV, GAS, ELECTRIC, WATER, SANITARY SEWER & STORM SEWER FACILITIES IN CONSTRUCTION ARE AND HAVE NOT BEEN FIELD LOCATED, CONTRACTOR TO VERIFY EXACT LOCATION AND DEPTH PRIOR TO ANY DIGGING AND/OR BORING



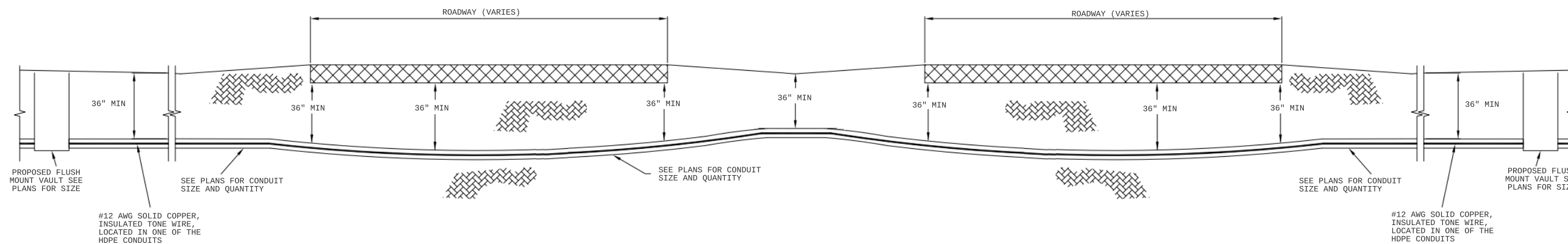


# TYPICALS

## ROAD CROSSING



## DIVIDED ROAD CROSSING



**MAGELLAN ADVISORS**

CITY OF SHERWOOD OR  
TYPICAL SET

TYPICALS

ENGINEER: JW

DRAWN BY: JW

CHECKED BY: JW

### REVISIONS

DATE	DESCRIPTION	BY
10/28/2021	VERSION 1	John Williams

**\*\*\*\*NOTE\*\*\*\***  
UTILITY & R.O.W. REPRESENTED ON PLANS ARE BASED ON RECORDS INFORMATION. NOT BASED ON BOUNDARY SURVEY & FIELD EXPOSURES.

**CAUTION!!!**  
CONTRACTOR TO LOCATE & VERIFY ALL EXISTING UTILITIES PRIOR TO CONSTRUCTION

**\*\*\*\* NOTE \*\*\*\***  
ALL UTILITIES MUST BE VERIFIED BY POTHOLES

**CAUTION!!!**  
EXIST. BURIED FIBER, TELEPHONE, CATV, GAS, ELECTRIC, WATER, SANITARY SEWER & STORM SEWER FACILITIES IN CONSTRUCTION ARE AND HAVE NOT BEEN FIELD LOCATED, CONTRACTOR TO VERIFY EXACT LOCATION AND DEPTH PRIOR TO ANY DIGGING AND/OR BORING



DATE: 10/28/2021

SHEET: 8 OF 17

FILE: Sherwood Typicals.pdf

ENGINEER: JW

DRAWN BY: JW

CHECKED BY: JW

**REVISIONS**

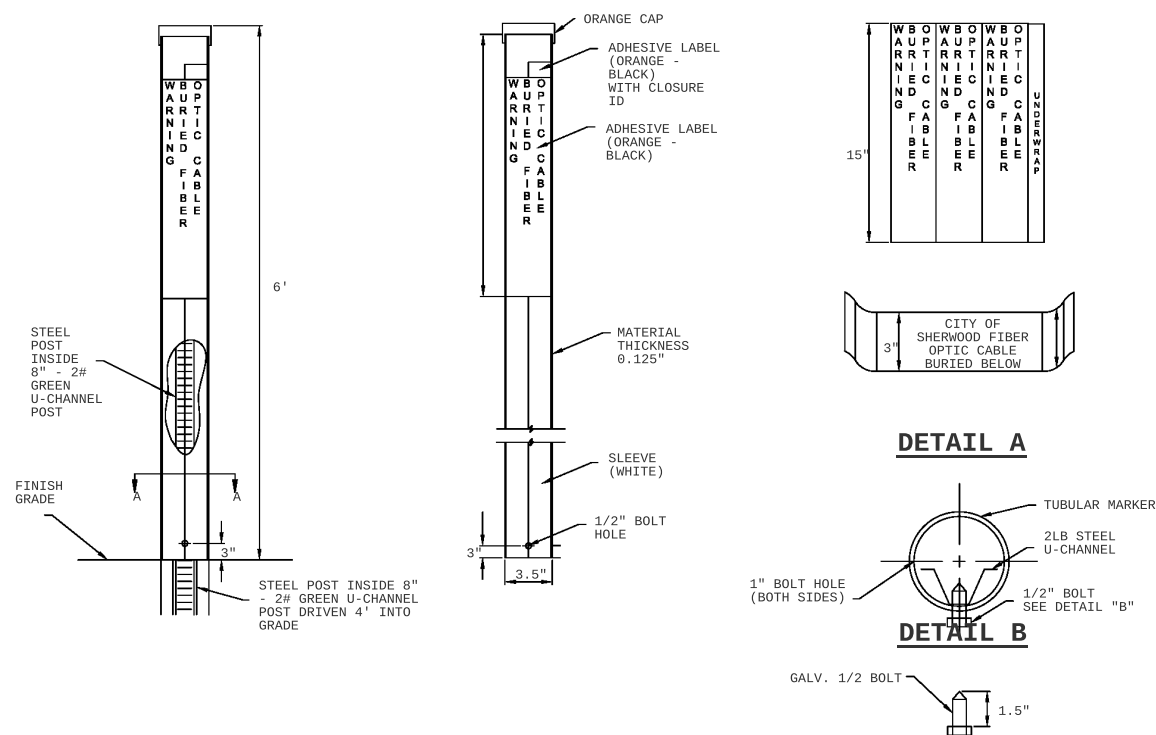
DATE	DESCRIPTION	BY
10/28/2021	VERSION 1	John Williams

DATE: 10/28/2021

SHEET: 9 OF 17

FILE: Sherwood Typicals.pdf

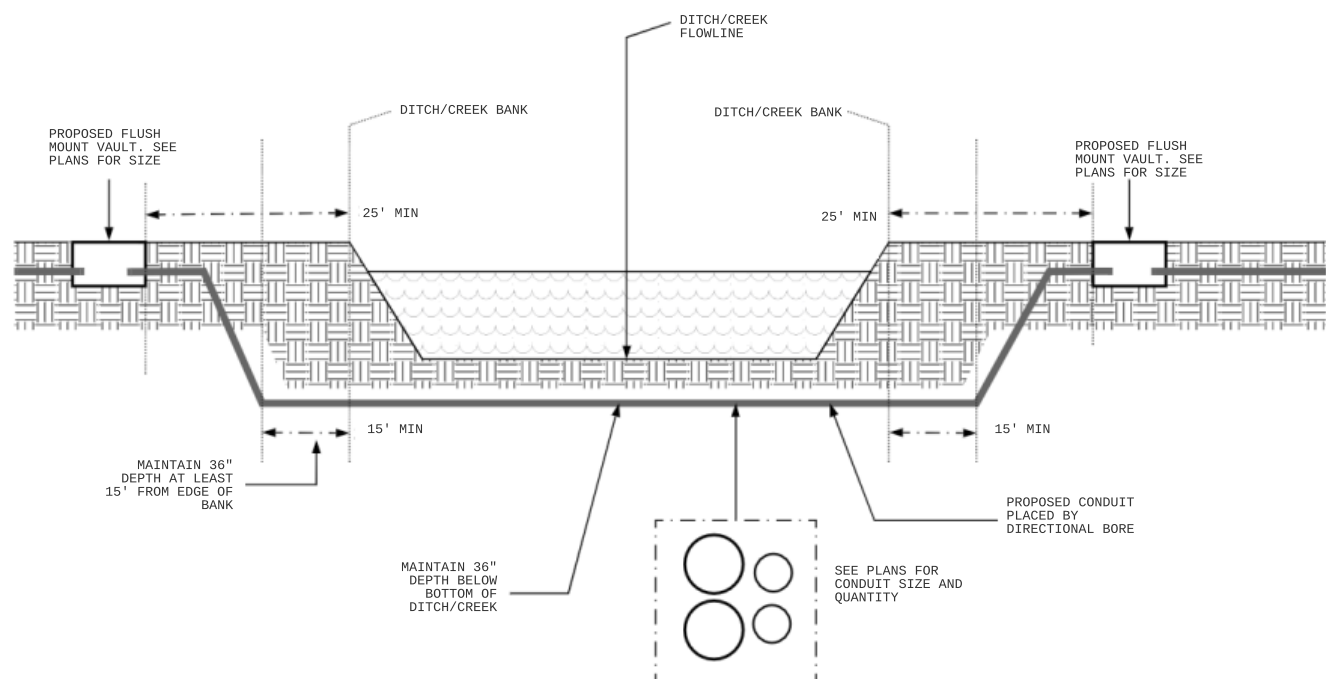
**FIBER OPTIC UTILITY MARKER**



**NOTES:**

1. 8' - 2#/FT. GREEN STEEL U-CHANNEL POST OR CITY OF SHERWOOD APPROVED EQUAL.
2. 72" H-41-RF TUBULAR ROUTER MARKER OR CITY OF SHERWOOD EQUAL.
3. ROUTE MAKER WRAP DECAL, BLACK TEXT ON ORANGE BACKGROUND.
4. RAISED MARKERS INDICATING FIBER OPTIC CABLE BURIED BELOW SHALL BE INSTALLED WHERE INDICATED ON THE PLANS.
5. ALL RAISED MARKERS INSTALLED SHALL BE MARKED ON THE AS-BUILT DRAWINGS.
6. ALL FIBER OPTIC MARKERS SHALL HAVE "THE CITY OF SHERWOOD" MARKED ON THEM.

**CREEK / DITCH CROSSING**



**NOTES:**

1. REFER TO THE CONSTRUCTION NOTES FOR MORE DETAILS ON DITCH AND CREEK CROSSINGS.
2. IF CROSSING CULVERT VERIFY THERE IS 36" OF COVER. IF THERE IS 36" OF COVER CONDUIT MAY BE INSTALLED OVER CULVERT.

**\*\*\*\*NOTE\*\*\*\***  
UTILITY & R.O.W. REPRESENTED ON PLANS ARE BASED ON RECORDS INFORMATION. NOT BASED ON BOUNDARY SURVEY & FIELD EXPOSURES.

**CAUTION!!!**  
CONTRACTOR TO LOCATE & VERIFY ALL EXISTING UTILITIES PRIOR TO CONSTRUCTION

**\*\*\*\* NOTE \*\*\*\***  
ALL UTILITIES MUST BE VERIFIED BY POTHOLES

**CAUTION!!!**  
EXIST. BURIED FIBER, TELEPHONE, CATV, GAS, ELECTRIC, WATER, SANITARY SEWER & STORM SEWER FACILITIES IN CONSTRUCTION ARE AND HAVE NOT BEEN FIELD LOCATED, CONTRACTOR TO VERIFY EXACT LOCATION AND DEPTH PRIOR TO ANY DIGGING AND/OR BORING

CALL BEFORE YOU DIG  
1-800-245-4545  
48 HOURS NOTICE REQUIRED

**811**  
Know what's below.  
Call before you dig.

**MAGELLAN ADVISORS**

CITY OF SHERWOOD OR  
TYPICAL SET

TYPICALS

ENGINEER: JW

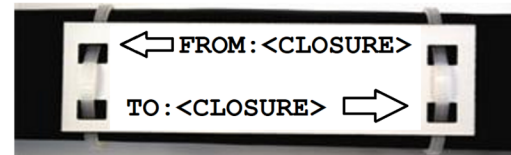
DRAWN BY: JW

CHECKED BY: JW

**REVISIONS**

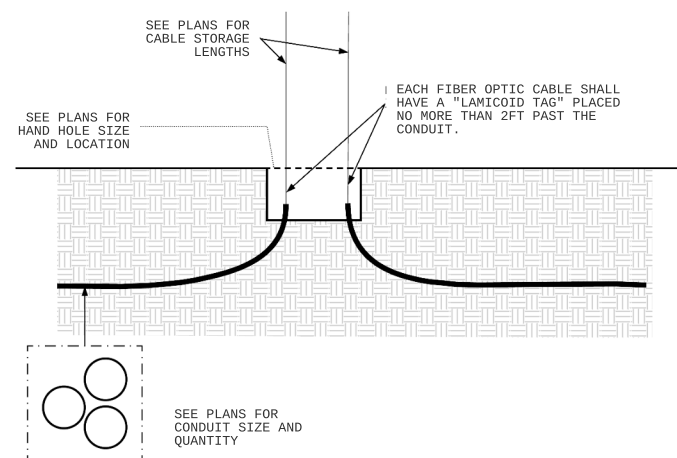
DATE	DESCRIPTION	BY
10/28/2021	VERSION 1	John Williams

CLOSURE LABELS 1



NOTES:

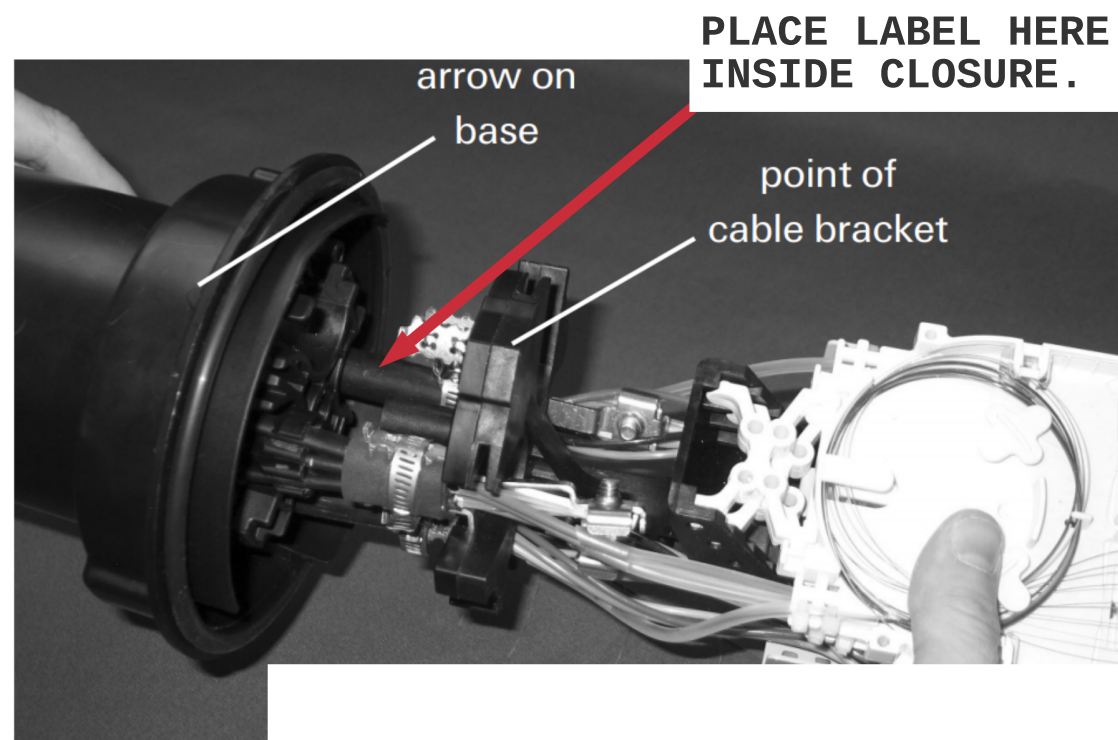
1. TAGS SHALL BE INSTALLED WHEN CABLE IS INSTALLED. THIS IS TO AID SPLICERS IN IDENTIFYING CABLES AND FUTURE MAINTENANCE ACTIVITIES.
2. TAGS ARE ONLY TO BE INSTALLED IN HANDHOLDS WITH CLOSURES. PULL THROUGH HANDHOLDS DO NOT REQUIRE TAGS.
3. TAGS SHALL BE FASTENED TO CABLES WITH A MINIMUM OF TWO ZIP TIES.



CLOSURE LABELS 2

NOTES:

1. EACH CABLE INSIDE CLOSURE SHALL BE LABELED WITH A STICK ON LABEL. THE LABEL SHALL BE COMPLETELY CONTAINED WITHIN THE CLOSURE. THE LABEL SHALL INDICATE WHICH CLOSURE THE CABLE IS GOING TO.
2. THE PICTURE SHOWN DISPLAYS A COMMSCOPE FOSC STYLE CLOSURE WITH THE LID REMOVED.



**\*\*\*\*NOTE\*\*\*\***  
UTILITY & R.O.W. REPRESENTED ON PLANS ARE BASED ON RECORDS INFORMATION. NOT BASED ON BOUNDARY SURVEY & FIELD EXPOSURES.

**CAUTION!!!**  
CONTRACTOR TO LOCATE & VERIFY ALL EXISTING UTILITIES PRIOR TO CONSTRUCTION

**\*\*\*\* NOTE \*\*\*\***  
ALL UTILITIES MUST BE VERIFIED BY POTHOLES

**CAUTION!!!**  
EXIST. BURIED FIBER, TELEPHONE, CATV, GAS, ELECTRIC, WATER, SANITARY SEWER & STORM SEWER FACILITIES IN CONSTRUCTION ARE AND HAVE NOT BEEN FIELD LOCATED, CONTRACTOR TO VERIFY EXACT LOCATION AND DEPTH PRIOR TO ANY DIGGING AND/OR BORING

CALL BEFORE YOU DIG  
1-800-245-4545  
48 HOURS NOTICE REQUIRED

**811**  
Know what's below.  
Call before you dig.

DATE: 10/28/2021

SHEET: 10 OF 17

FILE: Sherwood Typicals.pdf



# TYPICALS

RAILROAD, WATERWAY, BRIDGE, OR OTHER CROSSING

NOTES:

1. THESE PLANS DO NOT INCLUDE PLANS OR TYPICALS FOR RAILROAD, BRIDGE, OR WATER WAY CROSSINGS. SEPERATE DRAWINGS FOR EACH CROSSING WILL BE SUBMITTED WITH PERMITS FOR EACH CROSSING.
2. ANY CROSSING THAT REQUIRES ADDITIONAL PERMITS ARE NOTED ON THE PLANS. DO NOT CONSTRUCT THESE AREAS WITHOUT THE PROPER APPROVAL AND PERMITS.

**MAGELLAN ADVISORS**

CITY OF SHERWOOD OR  
TYPICAL SET

TYPICALS

ENGINEER: JW

DRAWN BY: JW

CHECKED BY: JW

**REVISIONS**

DATE	DESCRIPTION	BY
10/28/2021	VERSION 1	John Williams

**\*\*\*\*NOTE\*\*\*\***  
UTILITY & R.O.W. REPRESENTED ON PLANS ARE BASED ON RECORDS INFORMATION. NOT BASED ON BOUNDARY SURVEY & FIELD EXPOSURES.

**CAUTION!!!**  
CONTRACTOR TO LOCATE & VERIFY ALL EXISTING UTILITIES PRIOR TO CONSTRUCTION

**\*\*\*\* NOTE \*\*\*\***  
ALL UTILITIES MUST BE VERIFIED BY POTHOLING

**CAUTION!!!**  
EXIST. BURIED FIBER, TELEPHONE, CATV, GAS, ELECTRIC, WATER, SANITARY SEWER & STORM SEWER FACILITIES IN CONSTRUCTION ARE AND HAVE NOT BEEN FIELD LOCATED, CONTRACTOR TO VERIFY EXACT LOCATION AND DEPTH PRIOR TO ANY DIGGING AND/OR BORING

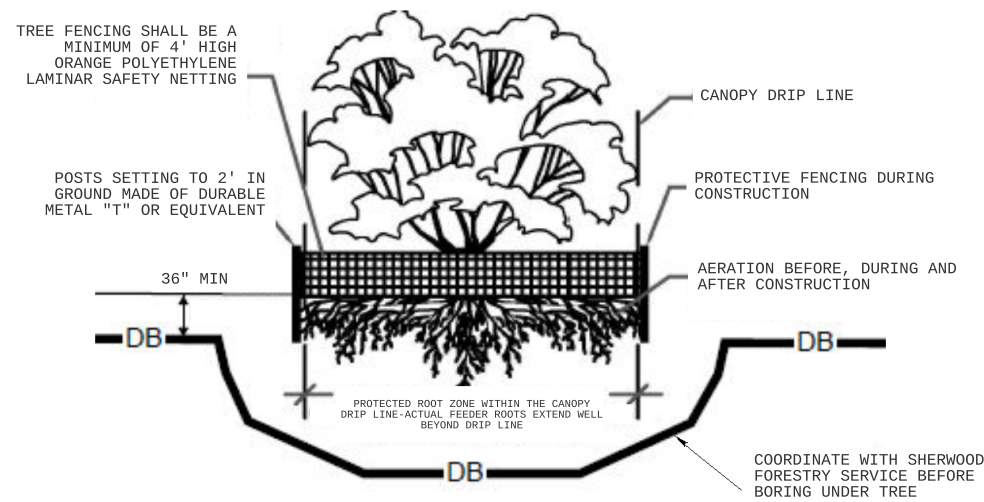


DATE: 10/28/2021

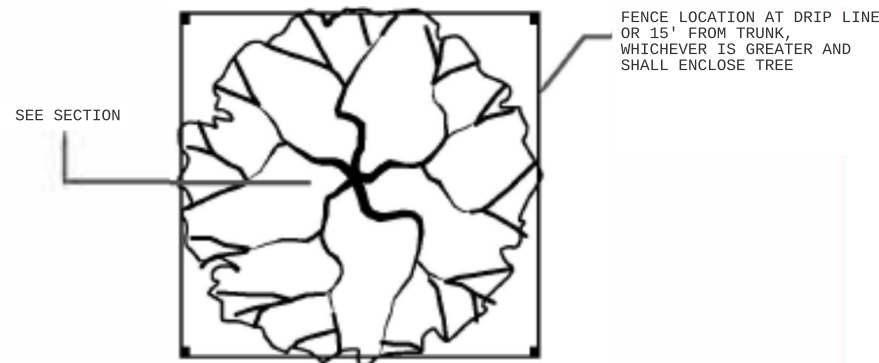
SHEET: 11 OF 17

FILE: Sherwood Typicals.pdf

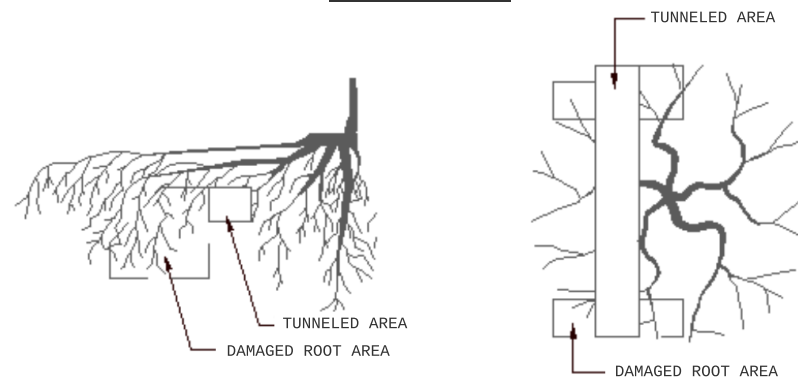
**PROTECTED ROOT ZONE AND DRIP LINE - SECTION VIEW**



**PROTECTED ROOT ZONE AND DRIP LINE - PLAN VIEW**



**ROOT TUNNELING**



## TREE PROTECTION

### TREE PROTECTION NOTES:

1. SOIL COMPACTION PREVENTION
  - a. TO PREVENT TREE ROOT SMOTHERING, NO SOIL STOCKPILES, SUPPLIES, EQUIPMENT OR ANY OTHER MATERIAL SHALL BE PLACED OR STORED WITHIN A TREE DRIPLINE OR WITHIN 15 FEET OF THE TREE TRUNK FOR COLUMN SHAPED TREES, WHICHEVER DISTANCE IS GREATER.
2. ROOT PROTECTION
  - a. TREE ROOTS SHALL NOT BE CUT UNLESS CUTTING IS UNAVOIDABLE.
  - b. WHEN ROOT CUTTING IS UNAVOIDABLE, A CLEAN SHARP CUT SHALL BE MADE TO AVOID SHREDDING OR SMASHING. ROOT CUTS SHOULD BE MADE BACK TO LATERAL ROOT.
  - c. WHENEVER POSSIBLE, TREE ROOTS SHOULD BE CUT BETWEEN LATE FALL AND BUD OPENING, WHEN ROOT ENERGY SUPPLIED ARE HIGH AND CONDITIONS ARE LEAST FAVORABLE FOR DISEASE CAUSE AGENTS.
  - d. THE CITY SHALL BE NOTIFIED OF ANY CUTTING OF THE FOLLOWING ROOTS:
    - i. TWO ROOTS HAVING A DIAMETER OF MORE THAN 3 INCHES.
    - ii. FOUR ROOTS HAVING DIAMETERS BETWEEN 2 AND 3 INCHES.
    - iii. ANY SINGLE ROOT HAVING A DIAMETER GREATER THAN 6 INCHES.
  - e. TRENCHES SHALL BE HAND DUG WITHIN THE DRIPLINE IN AREAS WHERE ROOTS 2 INCHES AND LARGER IN DIAMETER ARE PRESENT, AND WHEN LOW BRANCHES WHICH MAY BE DAMAGED BY EQUIPMENT ARE PRESENT.
  - f. WHENEVER POSSIBLE, ROOTS 2 INCHES OR LARGER IN DIAMETER SHALL BE TUNNELED OR BORED UNDER AND SHALL BE COVERED TO PREVENT DEHYDRATION. EXPOSED ROOTS SHALL BE COVERED IMMEDIATELY WITH SOIL OR BURLAP AND KEPT MOIST.
  - g. POWER TOOLS SHALL NOT BE USED TO PRUNE ROOTS, WITH THE EXCEPTION OF ARBORICULTURALLY APPROVED ROOT CUTTING EQUIPMENT USED UNDER THE SUPERVISION OF THE CITY. ONLY THE FOLLOWING APPROVED TOOLS SHALL BE ACCEPTABLE: OVERLAP HAND PRUNERS AND/OR LOPPERS, (NOT ANVIL TYPES) AND ARBORIST TYPE PRUNING SAWS.
  - h. WHEN MORE THAN ONE ROOT 2 INCHES OR LARGER IN DIAMETER ON ANY PUBLIC TREE IS CUT, SUPPLEMENTAL WATERING SHALL BE PROVIDED IF THE TREE LACKS AN OPERATIONAL SPRINKLER SYSTEM. THE APPLICANT OR ABUTTING LANDOWNER SHALL PROVIDE THE WATERING.
3. TREE FENCING
  - a. FENCING MATERIAL SHALL ENCIRCLE ANY TREE WHOSE OUTER DRIPLINE EDGE IS WITHIN 20 FEET OF AND CONSTRUCTION ACTIVITIES. FENCING IS NOT NEEDED FOR BORE PATHS WITHIN 20 FEET OF DRIPLINE, ONLY IF EQUIPMENT IS STATIONED WITHIN 20 FEET OF THE DRIPLINE.
  - b. FENCING MATERIAL SHALL BE BRIGHT, CONTRASTING COLOR, DURABLE, AND AT LEAST 4 FEET HIGH. FENCE POSTS SHALL BE COMPARABLE TO METAL "T" POSTS OR HEAVIER POSTS AND PLACED AT LEAST 2 FEET BELOW GROUND.
  - c. FENCING MATERIAL SHALL BE PLACED AT THE DRIPLINE OR AT LEAST 15 FEET FROM ANY TREE TRUNK, WHICHEVER DISTANCE IS GREATER, AND MAINTAINED IN AN UPRIGHT POSITION THROUGHOUT THE DURATION OF THE CONSTRUCTION ACTIVITIES.
4. ADDITIONAL NOTES
  - a. ANY DAMAGE TO TRUNK OR BRANCHES WITHIN THE CROWN OF A PROTECTED TREE SHALL BE REPORTED TO THE CITIES FORESTRY DEPARTMENT IMMEDIATELY. DAMAGE SHALL BE REPAIRS AS SOON AS POSSIBLE USING ARBORICULTURALLY ACCEPTED STANDARDS, PROCEDURES AND PRACTICES.

**MAGELLAN ADVISORS**

CITY OF SHERWOOD OR  
TYPICAL SET

TYPICALS

ENGINEER: JW

DRAWN BY: JW

CHECKED BY: JW

**REVISIONS**

DATE	DESCRIPTION	BY
10/28/2021	VERSION 1	John Williams

**\*\*\*\*NOTE\*\*\*\***  
UTILITY & R.O.W. REPRESENTED ON PLANS ARE BASED ON RECORDS INFORMATION. NOT BASED ON BOUNDARY SURVEY & FIELD EXPOSURES.

**CAUTION!!!**  
CONTRACTOR TO LOCATE & VERIFY ALL EXISTING UTILITIES PRIOR TO CONSTRUCTION

**\*\*\*\* NOTE \*\*\*\***  
ALL UTILITIES MUST BE VERIFIED BY POTHOLING

**CAUTION!!!**  
EXIST. BURIED FIBER, TELEPHONE, CATV, GAS, ELECTRIC, WATER, SANITARY SEWER & STORM SEWER FACILITIES IN CONSTRUCTION ARE AND HAVE NOT BEEN FIELD LOCATED, CONTRACTOR TO VERIFY EXACT LOCATION AND DEPTH PRIOR TO ANY DIGGING AND/OR BORING

CALL BEFORE YOU DIG  
1-800-245-4545  
48 HOURS NOTICE REQUIRED

**811**  
Know what's below.  
Call before you dig.

DATE: 10/28/2021

SHEET: 17 OF 17

FILE: Sherwood Typicals.pdf