



## Sherwood Festival Plaza

DATE September 15, 2022

## ADDENDUM NO. 1

### Addition/Change to the Contract Documents

The work provided for in this addendum shall become a part of the drawings and specifications for this project.

1. Detail 1, L601: Concrete Pavement – Vehicular – Concrete thickness to be increased from 5” to 7”. Aggregate base to remain as is.
2. Detail 5, L601: Concrete Header – Rebar to be removed from concrete header.
3. L401-Planting Plan: Add 40 – 5 gallon *Berberis buxifolia* 'Nana' – Dwarf Magellan Barberry, for a total of 75. Additional plant material will be site placed under the supervision of the landscape architect at the time of planting or via site instruction prior to planting.
4. Electrical Drawings: Electrical drawings have been reissued in response to RFI's.
5. See below for responses to questions received during the bidding process.

**Question 1:** How many total bike rack rings are there? Just the 1?

**Answer 1:** As per L101 – Materials Plan, there is only 1 bike rack.

**Question 2:** Note 9 on E100 PGE Vault and is also shown on L101 listed as “By others”. Who provides and what size is it if we provide and install.

**Answer 2:** The vault will be installed prior to beginning of construction and will be installed by PGE.

**Question 3:** Power Supply Conduit routing for Light Poles and tree well receptacles? Do we estimate where it is routed?

**Answer 3:** Tree well receptacles have been moved to the Northeast corner of the well boxes. The conduit will be routed across the north side of the tree boxes.

**Question 4:** Where do we price the Decorative Screen Wall? It also listed in Site Furnishings Measurement and Payment.

**Answer 4:** The Decorative Screen and its concrete wall are to be included together in item #19 on the bid schedule.

**Question 5:** Sheet E100 keynote #10 shows intercepting the City Fiber Infrastructure. Question: Is there a Fiber Vault with a fiber loop in it at this location?

**Answer 5:** Electrical plans have been updated to show the location of the existing fiber vault.

**Question 6:** If this is just a conduit containing a Fiber how do we splice into it?

**Answer 6:** Electrical plans have been updated to show (2) new 2" HDPE conduits to be routed from the City's existing fiber vault. One conduit will go to the irrigation controller and the second will be a spare conduit to the service panel.

**Question 7:** Is there a spec that specifies the Fiber we are to install?

**Answer 7:** Fiber optic cable to be provided and installed by the City in conduit provided and installed by the electrical contractor.

**Question 8:** Sheet #002 keynote #6 also mentions an ethernet device/patch panel. Could more information be provided about the Fiber scope?

**Answer 8:** Fiber optic cable to terminate at irrigation controller. No separate patch panel will be required.

**Question 9:** After downloading the project document for your Sherwood Festival Plaza from your website & going through all the pages, it appears the Design Standard Details is missing the Index of Standard Details per the Table of Content on page 11.

**Answer 9:** The detail index may be found on the City of Sherwood's website at the following address:

[https://www.sherwoodoregon.gov/sites/default/files/fileattachments/Engineering/page/631/detail\\_index.pdf](https://www.sherwoodoregon.gov/sites/default/files/fileattachments/Engineering/page/631/detail_index.pdf)

**Question 10:** Please provide: Detail of the .25" steel frame at edge of information panel, Powder coat color and manufacturer, Thickness of graphic, mounting of graphic (bolted or adhesive), are shop drawing required, Electronic or physical graphic proofs?

**Answer 10:** Steel frame to be determined during shop drawing process, powder coating to be dark bronze (exact RAL TBD), thickness of graphic to be 0.125", bolt graphic on steel frame, shop drawings will be required, and City will supply electronic proof.

**Question 11:** Bid Item 19 DECORATIVE SCREEN FENCE - Where can we find the specs called out for each Perforated panel?

**Answer 11:** See 32 94 00 – Part 2 – 2.4 Decorative Screen Fence.

**Question 12:** How the two types of screens meet behind the 1/4x2 flat bar that is welded to them (is it one screen with two different patterns and if so is there spacing for the flat bar to be welded on?)

**Answer 12:** See detail 4\L605 for perforated panel connection at flat bar. It is intended that the top panel and bottom panel have different patterns and are separate panels.

**Question 13:** What are Perforated panel hole sizes and Center to Center spacing, bar dimension (size of material between rectangles) material Gages and type of steel, margins for welding to if any?

**Answer 13:** See 32 94 00 – Part 2 – 2.4 Decorative Screen Fence for perforated panel specifications.

**Question 14:** Where can we find the tree shape? (CAD files are needed)

**Answer 14:** CAD files will be provided to the successful proponent. See detail 4/L604 for scalable depiction of trees.

**Question 15:** What type of finish (if any) to panels and tree shapes?

**Answer 15:** As per 32 94 00 – Part 2 – 2.4 Decorative Screen Fence, all decorative screen elements are to be powder-coated.

6. By signing below, bidders acknowledge the reissue of the electrical drawings (exhibit 1).

**Attachments:**

- E001 – Electrical Symbol Legend and Schedules
- E002 – Electrical One-Line Diagram and Schedules
- E100 – Site Plan – Electrical
- E200 – Site Plan – Photometric
- E201 – Street Lighting – Photometric
- E300 – Electrical Details

This ADDENDUM shall be signed and attached to the Bidder’s Proposal and shall subsequently become part of the Contract Documents.

Company Name	
Contractor Name	
Contractor Signature	
Date	

LUMINAIRE SCHEDULE						
TYPE	DESCRIPTION	MOUNTING	LAMP	BALLAST	MANUFACTURER AND MODEL NUMBER	INPUT WATTS
'A'	COMPACT FLOOD LIGHT, 41 DEGREE ANGLE, DARK BRONZE FINISH DIECAST ALUMINUM HOUSING, ANODIZED ALUMINUM OPTICS, UNIVERSAL MOUNTING BRACKET, STAINLESS HARDWARE, WET LOCATION RATED. PROVIDE COUPLER FOR MOUNTING LIGHT ON POLE. INSTALL PER MANUFACTURER'S REQUIREMENTS.	POLE	LED 1330 LUMENS 85CRI, 3000K	ELECTRONIC DRIVER 120/277V DIMMING 0-10V	BEGA LIGHTING: 77 685 OR APPROVED. MOUNT: POLE COUPLER 71 042	14
'B1'	14" WIDE, 4" HEIGHT RECESSED STEP LIGHTS, FINISHED TO BE DETERMINED, STAINLESS STEEL COVER PLATE WITH FROSTED GLASS DIFFUSER, TAMPER RESISTANT HARDWARE.	RECESSED STEP LIGHT	LED 1,323 LUMENS 80CRI, 3000K	ELECTRONIC DRIVER 120V	COLE LIGHTING: I612 SERIES OR APPROVED.	20

NOTE:

- CONTRACTOR TO AIM POST TOP LUMINAIRE PERPENDICULAR TO SIDEWALK.
- MOUNTING BRACKETS FOR TYPE A LUMINAIRE ARE BY POLE MANUFACTURER.

ELECTRICAL SYMBOL LIST			
AF	FUSE		RECEPTACLE - DUPLEX - GFI UON
AS	SWITCH		RECEPTACLE - FOUR-PLEX - GFI UON
(D)	EXISTING TO BE REMOVED		SWITCH - SINGLE-POLE, MOUNT 48" AFF, UON
(E)	EXISTING TO REMAIN		LIGHT FIXTURE - SURFACE-MOUNTED
(R)	EXISTING TO RELOCATE		METERED SERVICE CABINET
D.B.	DIRECT BURIED		JUNCTION BOX - IN-GRADE
E.N.I.C.	ELECTRIC NOT IN CONTRACT		JUNCTION BOX - CEILING-MOUNTED
F	FLEX CONDUIT		METER BASE - UTILITY COMPANY APPROVED
G	GROUND WIRE		OCCUPANCY SENSOR
GFI	GROUND FAULT INTERRUPTER		TRANSFORMER
GND	GROUND		MECHANICAL EQUIPMENT TAG NUMBER REFER TO MECHANICAL EQUIPMENT SCHEDULE
HP	HORSE POWER		EQUIPMENT TAG NUMBER, REFER TO MECHANICAL EQUIPMENT SCHEDULE "K" = KITCHEN, "C" = COMPUTER
IG	ISOLATED GROUND		NOTE SYMBOL, REFER TO NOTE AS INDICATED
MCA	MINIMUM CIRCUIT AMPS		FEEDER NUMBER, REFER TO "FEEDER SCHEDULE"
OP	OVERHEAD POWER		DETAIL HEADER
OT	OVERHEAD TELCO		SECTION IDENTIFIER
P	POLE		DETAIL IDENTIFIER
SCA	SHORT CIRCUIT AMPS SYMMETRICAL		HOME RUN. HASH MARKS INDICATE 2#12 WIRE UNLESS NOTED OTHERWISE
SPD	S-O CORD		CONDUCTORS IN CONDUIT, (2)#12 OR AS NOTED (QUANTITY AS INDICATED BY HASH MARKS)
S-O	SURGE PROTECTION DEVICE		GROUND WIRE
UP	UNDERGROUND POWER		GROUND CONNECTION
UT	UNDERGROUND TELCO		
W	WATTS		
WP	WEATHERPROOF		
---	CONDUIT - BELOW GRADE		
-C-	CONDUIT - COMMUNICATIONS		
-P-	CONDUIT - PRIMARY POWER		
-S-	CONDUIT - SECONDARY POWER		
---	CONDUIT - CONCEALED		
---	CONDUIT - EXPOSED		
---	CONDUIT - FLEXIBLE		
---	CONDUIT - STUB-DOWN		
---	CONDUIT - STUB-OUT		
---	CONDUIT - STUB-UP		

**GENERAL REQUIREMENTS**

- CONFORM TO CURRENT CODE INCLUDING OSSC, NEC, BUILDING CODE, AND LOCAL REQUIREMENTS.
- PROVIDE COMPLETE AND FUNCTIONAL ELECTRICAL SYSTEMS AS SPECIFIED, AS SHOWN ON DRAWINGS, AS REQUIRED, AND AS INTENDED.
- EQUIPMENT SHALL BE NEW AND OF LIKE MATERIALS THROUGH AUTHORIZED DISTRIBUTORS. PROVIDE EQUIPMENT OF SAME SYSTEM AND TYPE BY SAME MANUFACTURER. EQUIPMENT SHALL BE LISTED FOR ITS USE AND SHALL MEET OREGON LISTING REQUIREMENTS. REFER TO OAR 918-306-00 FOR MORE INFORMATION ON OREGON LISTING REQUIREMENTS.
- WARRANT WORK, MATERIALS, AND EQUIPMENT FOR NOT LESS THAN ONE-YEAR. THIS REQUIREMENT SHALL NOT LIMIT, RESTRICT, OR OTHERWISE LESSEN ANY WARRANTY PROVIDED BY EQUIPMENT MANUFACTURER'S STANDARD WARRANTY IF GREATER THAN ONE-YEAR.
- PROVIDE SUBMITTALS FOR ELECTRICAL EQUIPMENT. PROVIDE STANDARD CUT-SHEETS CLEARLY INDICATING MODELS TO BE INSTALLED.
- GROUND SYSTEMS PER NEC ARTICLE 250, AS INDICATED, AND AS SHOWN.
- ALL ELECTRICAL WORK TO COMPLY WITH NFPA 70E ARC FLASH RULES, WHICH WILL INCLUDE AN ARC FLASH ANALYSIS AND ARC FLASH LABEL FOR THE CONTROLLER CABINET.
- UNLESS THE COUNTY DETERMINES IN ITS SOLE DISCRETION THAT A CONTRACTOR'S ATTENDANCE IS NOT NECESSARY, CONTRACTORS WILL BE REQUIRED TO ATTEND A PRE-TASK MEETING WITH THE PROJECT MANAGER AND ELECTRICAL SUPERVISOR OR DESIGNEE TO DISCUSS THE HAZARDS AND SAFE WORK PROCEDURES FOR ALL ELECTRICAL WORK TO BE PERFORMED ON THE PROJECT.
- ELECTRICAL WORK SHALL BE PERFORMED UNDER ELECTRICALLY SAFE WORK CONDITIONS WITH LOCK-OUT TAG-OUT PER NFPA 70E. KEEP POWER DISRUPTIONS TO A MINIMUM AND NOTIFY OWNER IN ADVANCE OF POWER DISRUPTIONS.
- CALL U-DIG 811 AT LEAST 2-BUSINESS DAYS BEFORE DIG OR TRENCH PER OAR 952-001-0010 THROUGH -0090. SCAN & MARK SUGGESTED ROUTING FOR UTILITIES & IRRIGATION PRIOR TO TRENCHING ACTIVITIES; DO NOT DISTURB UTILITIES OR PIPING, AVOID CONFLICTS. WHERE FEASIBLE, MARK THE ANTICIPATED ROUTE(S) WITH WHITE PAINT; THIS HELPS LOCATING PERSONNEL FIND THE RIGHT AREA AND LOCATE NEARBY FACILITIES AS ACCURATELY AS POSSIBLE.

lango.hansen

LANDSCAPE ARCHITECTS

1100 nw glisan #3b  
portland or 97209



RENEWAL DATE: 12/31/2022

2022 08 14 12:38:40 PM

SHERWOOD FESTIVAL PLAZA

CITY OF SHERWOOD  
15527 SW Willamette Street  
Sherwood, OR 97140

REVISIONS

▲ Addendum 1 09-15-2022

SCALE AS SHOWN  
DRAWN BY R&W  
DATE 08.30.2022  
PROJECT NO. 2150

BIDDING DOCUMENTS

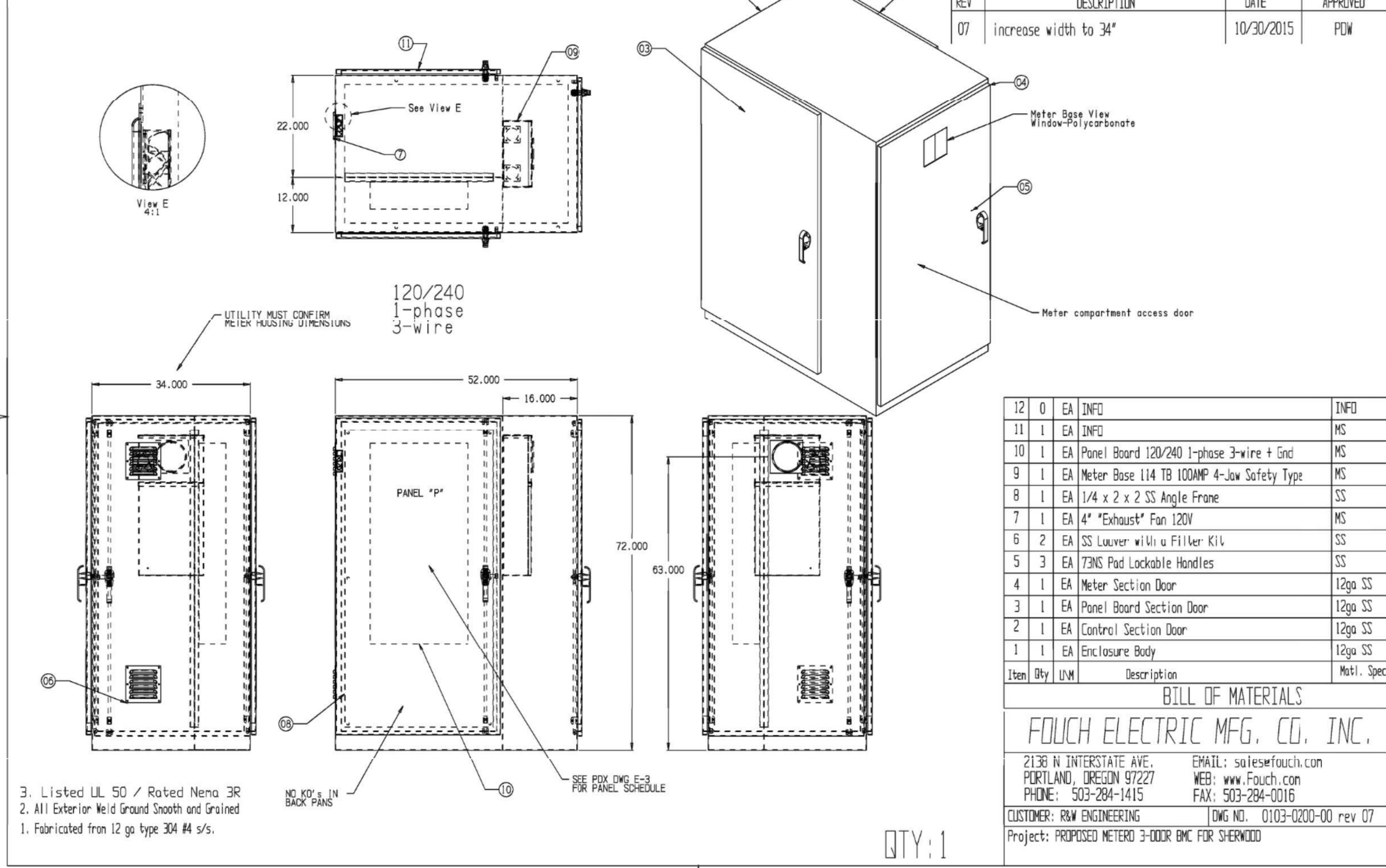
SHEET TITLE

ELECTRICAL SYMBOL LEGEND AND SCHEDULES

E001



FILE LOCATION: R / RW / PROPOSED METER 3-DOOR BMC FOR SHERWOOD  
 Layout: Assembly

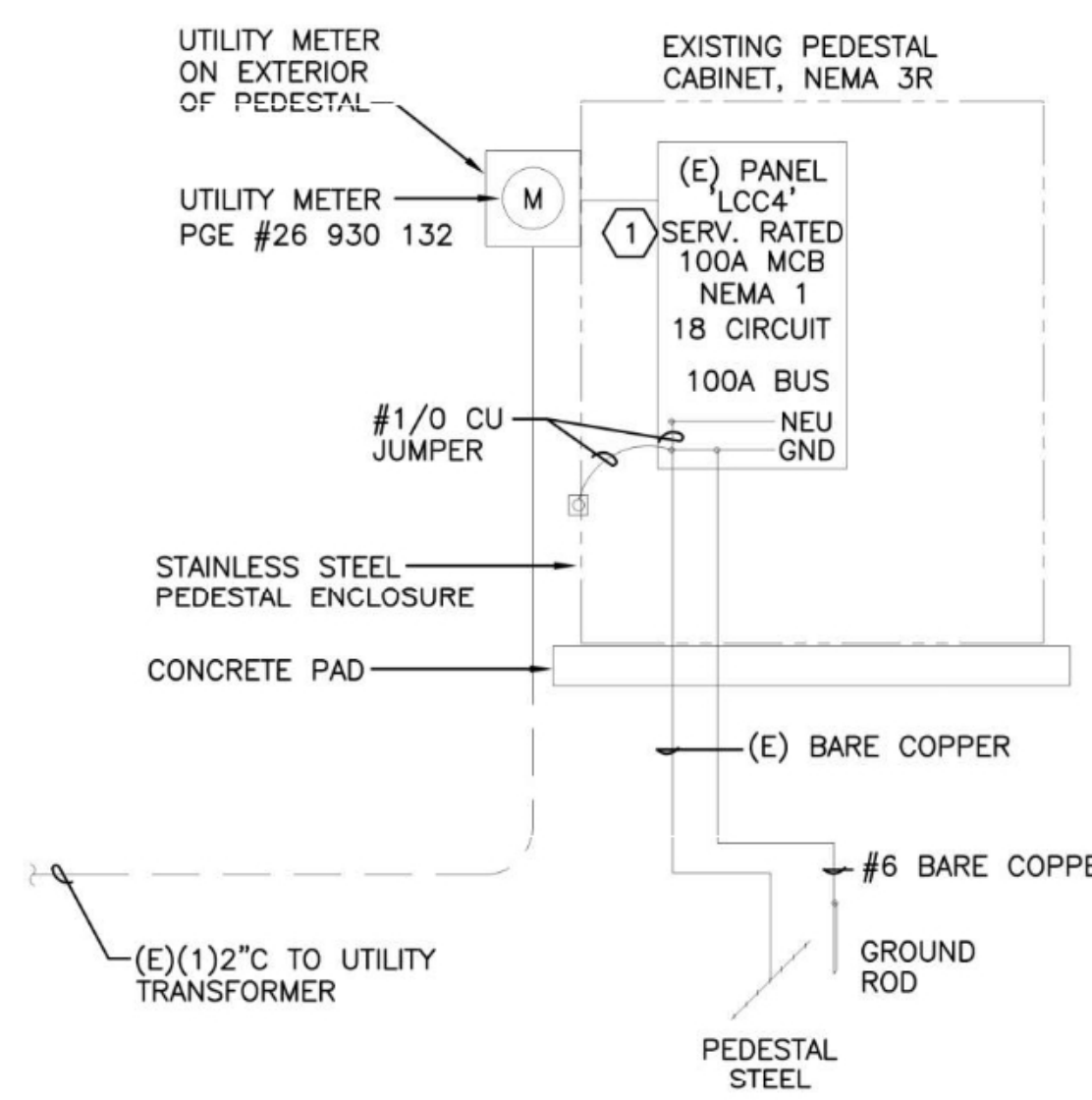


REV	DESCRIPTION	DATE	APPROVED
07	increase width to 34"	10/30/2015	PDW

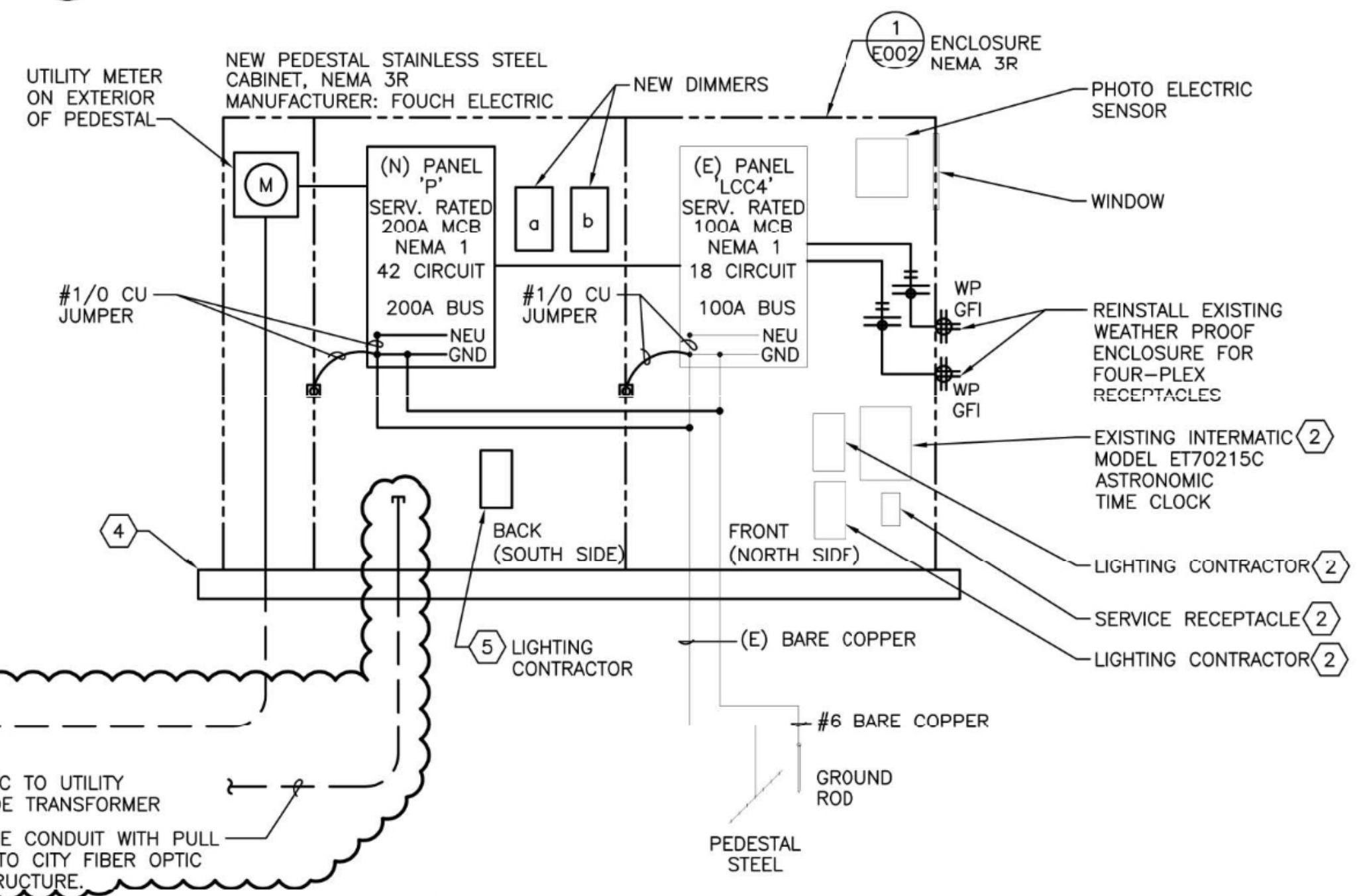
Item	Qty	UN	Description	Matl. Spec
12	0	EA	INFO	INFO
11	1	EA	INFO	MS
10	1	EA	Panel Board 120/240 1-phase 3-wire + Gnd	MS
9	1	EA	Meter Base 114 TB 100AMP 4-Jaw Safety Type	MS
8	1	EA	1/4 x 2 x 2 SS Angle Frame	SS
7	1	EA	4" "Exhaust" Fan 120V	MS
6	2	EA	SS Louver with a Filter Kit	SS
5	3	EA	73MS Pad Lockable Handles	SS
4	1	EA	Meter Section Door	12ga SS
3	1	EA	Panel Board Section Door	12ga SS
2	1	EA	Control Section Door	12ga SS
1	1	EA	Enclosure Body	12ga SS

**BILL OF MATERIALS**  
**FOUCH ELECTRIC MFG. CO., INC.**  
 2136 N INTERSTATE AVE. EMAIL: sales@fouch.com  
 PORTLAND, OREGON 97227 WEB: www.fouch.com  
 PHONE: 503-284-1415 FAX: 503-284-0016  
 CUSTOMER: R&W ENGINEERING DWG NO. 0103-0200-00 rev 07  
 Project: PROPOSED METER 3-DOOR BMC FOR SHERWOOD

**1 ELECTRICAL EQUIPMENT ENCLOSURE DETAIL**  
 E002 NOT TO SCALE



**2 EXISTING ELECTRICAL ONE-LINE DIAGRAM**  
 E002 NOT TO SCALE



**3 NEW ELECTRICAL ONE-LINE DIAGRAM**  
 E002 NOT TO SCALE

PANEL: 'P' (NEW)		BUS: 200A		VOLTAGE: 120/240V, 1 PH, 3W.						
FEEDER: SEE POWER RISER		MAIN BRKR: 200A M.C.B.		MOUNTING: SURFACE						
CKT NO.	CIRCUIT DESCRIPTION	CKT BREAKER AMPS/POLES	LOAD TYPE	LOAD VOLT-AMPS	PHASE	LOAD VOLT-AMPS	LOAD TYPE	CKT BREAKER AMPS/POLES	CIRCUIT DESCRIPTION	CKT NO.
1	(N) SPIDER BOX	30/2	R	2028	A	360	R	20/1	(N) RECEPTACLES - SPIDER BOX	2
3	(N) SPIDER BOX	30/2	R	2028	C	360	R	20/1	(N) RECEPTACLES - SPIDER BOX	4
5	(W) SPIDER BOX	30/2	R	2028	A	360	R	20/1	(N) RECEPTACLES - SPIDER BOX	6
7	(N) SPIDER BOX	30/2	R	2028	C	360	R	20/1	(N) RECEPTACLES - SPIDER BOX	8
9	(N) LIGHTING CONTROL	20/1	Z	200	A	180	R	20/1	(N) DED. RECEPTACLES - TREE WELL	10
11	(N) IRRIGATION CONTROLLER	20/1	Z	200	C	180	R	20/1	(N) DED. RECEPTACLES - TREE WELL	12
13	(N) POLE MOUNTED LIGHTS (a)	20/1	L	140	A	180	R	20/1	(N) DED. RECEPTACLES - TREE WELL	14
15	(N) POLE MOUNTED LIGHTS (b/c)	20/1	L	280	C	180	R	20/1	(N) DED. RECEPTACLES - TREE WELL	16
17	(N) STEP LIGHTS (d)	20/1	L	200	A	180	R	20/1	(N) DED. RECEPTACLES - TREE WELL	18
19	(N) DED. RECEPTACLES - POLE	20/1	R	180	C	180	R	20/1	(N) DED. RECEPTACLES - TREE WELL	20
21	(N) DED. RECEPTACLES - POLE	20/1	R	180	A	180	R	20/1	(N) DED. RECEPTACLES - TREE WELL	22
23	(N) DED. RECEPTACLES - POLE	20/1	R	180	C	180	R	20/1	(N) DED. RECEPTACLES - TREE WELL	24
25	(N) DED. RECEPTACLES - POLE	20/1	R	180	A	180	R	20/1	(N) DED. RECEPTACLES - TREE WELL	26
27	(N) DED. RECEPTACLES - POLE	20/1	R	180	C	180	R	20/1	(N) DED. RECEPTACLES - TREE WELL	28
29	(N) DED. RECEPTACLES - POLE	20/1	R	180	A	180	R	20/1	(N) DED. RECEPTACLES - TREE WELL	30
31	(N) DED. RECEPTACLES - POLE	20/1	R	180	C	180	R	20/1	(N) DED. RECEPTACLES - TREE WELL	32
33	(N) DED. RECEPTACLES - POLE	20/1	R	180	A	180	R	20/1	(N) SPARE	34
35	(N) DED. RECEPTACLES - POLE	20/1	R	180	C	180	R	20/1	(N) SPARE	36
37	(N) DED. RECEPTACLES - POLE	20/1	R	180	A	180	R	20/1	(N) SPARE	38
39	PANEL LCC4	100/2	R	5280	C	5280	R	20/1	(N) SPARE	40
41	---	---	---	4580	A	4580	R	20/1	(N) SPARE	42

CONNECTED LOAD		DEMAND LOAD		NOTES.....	
LOAD PER PHASE (VA)	A= 11876	LIGHTING	620 125%	775	1.
	B= 12516	RECEPT.	13512 10K+50%	11756	2.
	C= 98.97	KITCHEN	0 65%	0	3.
	A= 104.30	MOTOR	0 100%	0	
	B= 24.39	GENERAL	10260 100%	10260	
	C= 104.30	HEAT	0 100%	0	
		LG MOTOR	0 125%	0	
TOTAL LOAD (KVA)	24.39	TOTAL LOAD (KVA)		22.79	4. SHERWOOD PLAZA
TOTAL AMPS	101.63	TOTAL AMPS		94.96	Proj. 816.003.001

PANEL: 'LCC4' (EXISTING)		BUS: 100A		VOLTAGE: 120/240V, 1 PH, 3W.						
FEEDER: SEE POWER RISER		MAIN BRKR: 100A M.C.B.		MOUNTING: SURFACE						
CKT NO.	CIRCUIT DESCRIPTION	CKT BREAKER AMPS/POLES	LOAD TYPE	LOAD VOLT-AMPS	PHASE	LOAD VOLT-AMPS	LOAD TYPE	CKT BREAKER AMPS/POLES	CIRCUIT DESCRIPTION	CKT NO.
1	(E) 1ST ST. E. OF WA. ST. PED. LIGHTING	20/1	L	1500	A	720	R	20/1	(E) 1ST ST. E. OF WA. ST. HOLIDAY REC.	2
3	(E) 1ST ST. E. OF WA. ST. PED. LIGHTING	20/1	L	1500	C	720	R	20/1	(E) 1ST ST. E. OF WA. ST. HOLIDAY REC.	4
5	(E) 1ST ST. E. OF WA. ST. HOLIDAY REC.	20/1	R	720	A	720	R	20/1	(E) 1ST ST. E. OF WA. ST. HOLIDAY REC.	6
7	(E) 1ST ST. E. OF WA. ST. HOLIDAY REC.	20/1	R	720	C	720	R	20/1	(E) 1ST ST. E. OF WA. ST. HOLIDAY REC.	8
9	(E) TREE	20/1	R	720	A	180	R	20/1	(E) LCC4 MAINT. GFCI RECEPTACLE	10
11	(E) TREE	20/1	R	720	C	200	Z	20/1	(E) LCC4 LIGHTING CONTROL	12
13	(E) SPACE	20/1	R	720	A	720	R	20/1	(E) TREE	14
15	(E) SPACE	20/1	R	720	C	720	R	20/1	(E) SPACE	16
17	(E) SPACE	20/1	R	720	A	720	R	20/1	(E) SPACE	18

CONNECTED LOAD		DEMAND LOAD		NOTES.....	
LOAD PER PHASE (VA)	A= 5280	LIGHTING	3000 125%	3750	1.
	B= 4580	RECEPT.	6660 10K+50%	6660	2.
	C= 44.00	KITCHEN	0 65%	0	3.
	A= 38.17	MOTOR	0 100%	0	
	B= 44.00	GENERAL	200 100%	200	
	C= 38.17	HEAT	0 100%	0	
		LG MOTOR	0 125%	0	
TOTAL LOAD (KVA)	9.86	TOTAL LOAD (KVA)		10.61	4. SHERWOOD PLAZA
TOTAL AMPS	41.08	TOTAL AMPS		44.21	Proj. 816.003.001

**GENERAL NOTES**

A. CONTRACTOR TO PROVIDE TEMPORARY POWER TO ALL EXISTING STREET LIGHTS DURING ELECTRICAL SERVICE SHUTDOWN. STREET LIGHTS TO OPERATE DUSK TO DAWN.

**NOTES THIS SHEET**

- REINSTALL EXISTING ELECTRICAL PANEL IN NEW ENCLOSURE. SEE DETAIL 2/E002 AND 3/E002 FOR MORE INFORMATION. FIELD COORDINATE REINSTALLATION OF (2) CONTACTORS AND TIME CLOCK IN NEW ENCLOSURE.
- NEW LOCATION OF RELOCATED EQUIPMENT.
- PROVIDE NEW 2" CONDUIT TO NEW METER BASE PER PGE ESR. SEE PGE ESR 6.3.2 FOR CONDUIT SWEEP AND 6.3.5 FOR CONDUIT LOCATION AND LABELING.
- 3" CONCRETE PAD. CONCRETE PAD TO EXTEND 3" BEYOND FOOT PRINT OF ENCLOSURE.
- CONNECT TO EXISTING TIME CLOCK ON DEDICATED ZONE.

**lango.hansen**  
 LANDSCAPE ARCHITECTS  
 1100 nw gilson #3b  
 portland or 97209

REGISTERED PROFESSIONAL ENGINEER  
 88445PE  
 JONATHAN PATRICK KELLY  
 OREGON  
 NOV 12, 2015  
 RENEWAL DATE: 12/31/2022

**SHERWOOD FESTIVAL PLAZA**  
 CITY OF SHERWOOD  
 13527 SW Willamette Street  
 Sherwood, OR 97140

REVISIONS  
 Addendum 1 09-15-2022

SCALE AS SHOWN  
 DRAWN BY R&W  
 DATE 08.30.2022  
 PROJECT NO. 2150

BIDDING DOCUMENTS

SHEET TITLE  
**ELECTRICAL ONE-LINE DIAGRAM AND SCHEDULES**

**E002**

**R&W ENGINEERING, INC.**  
 9615 S.W. Allen Boulevard  
 Suite 107  
 Beaverton, Oregon 97005  
 Phone: (503) 726-3317  
 Office: (503) 292-6300  
 E-mail: rwenig@rwenig.com

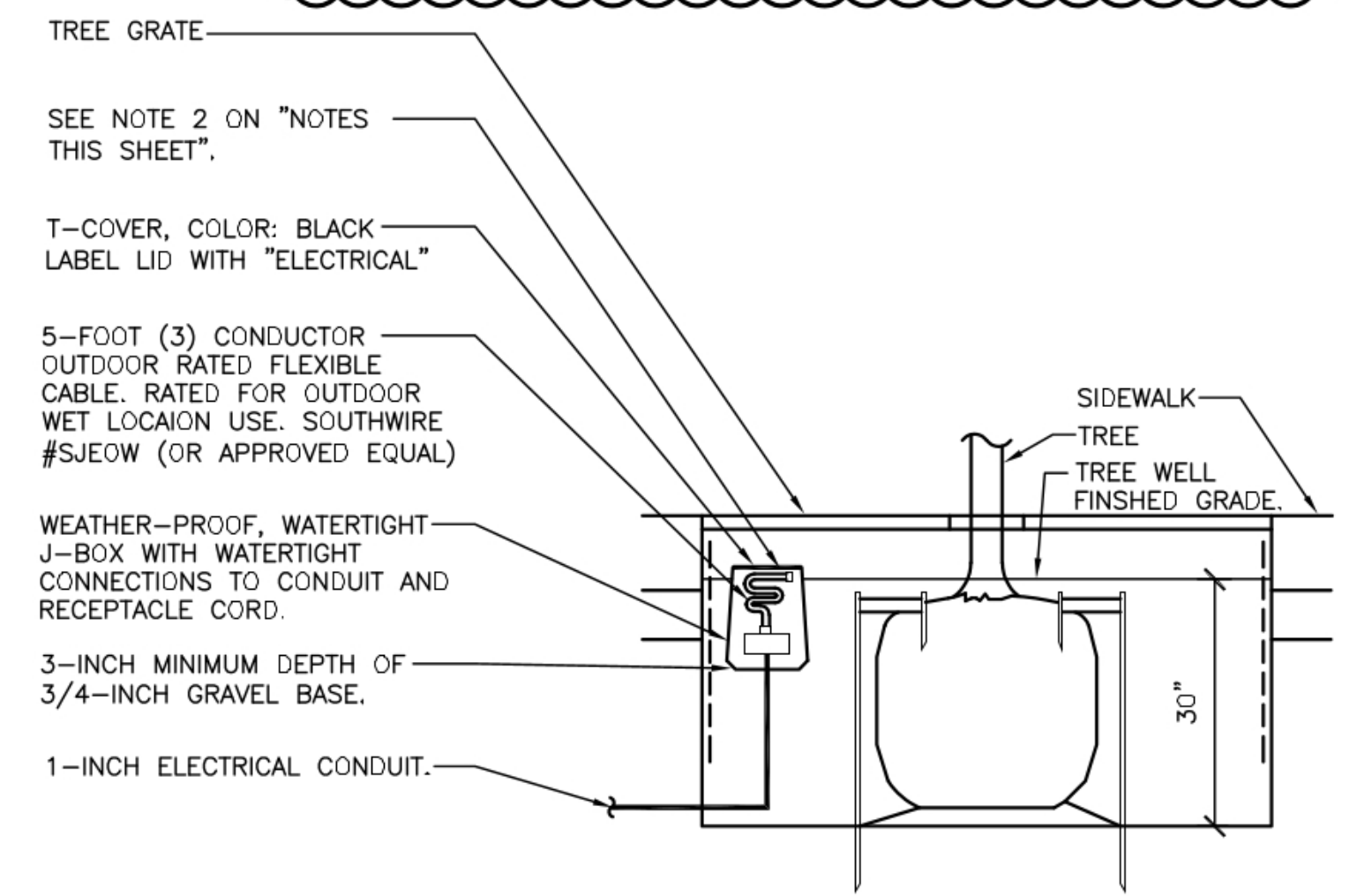
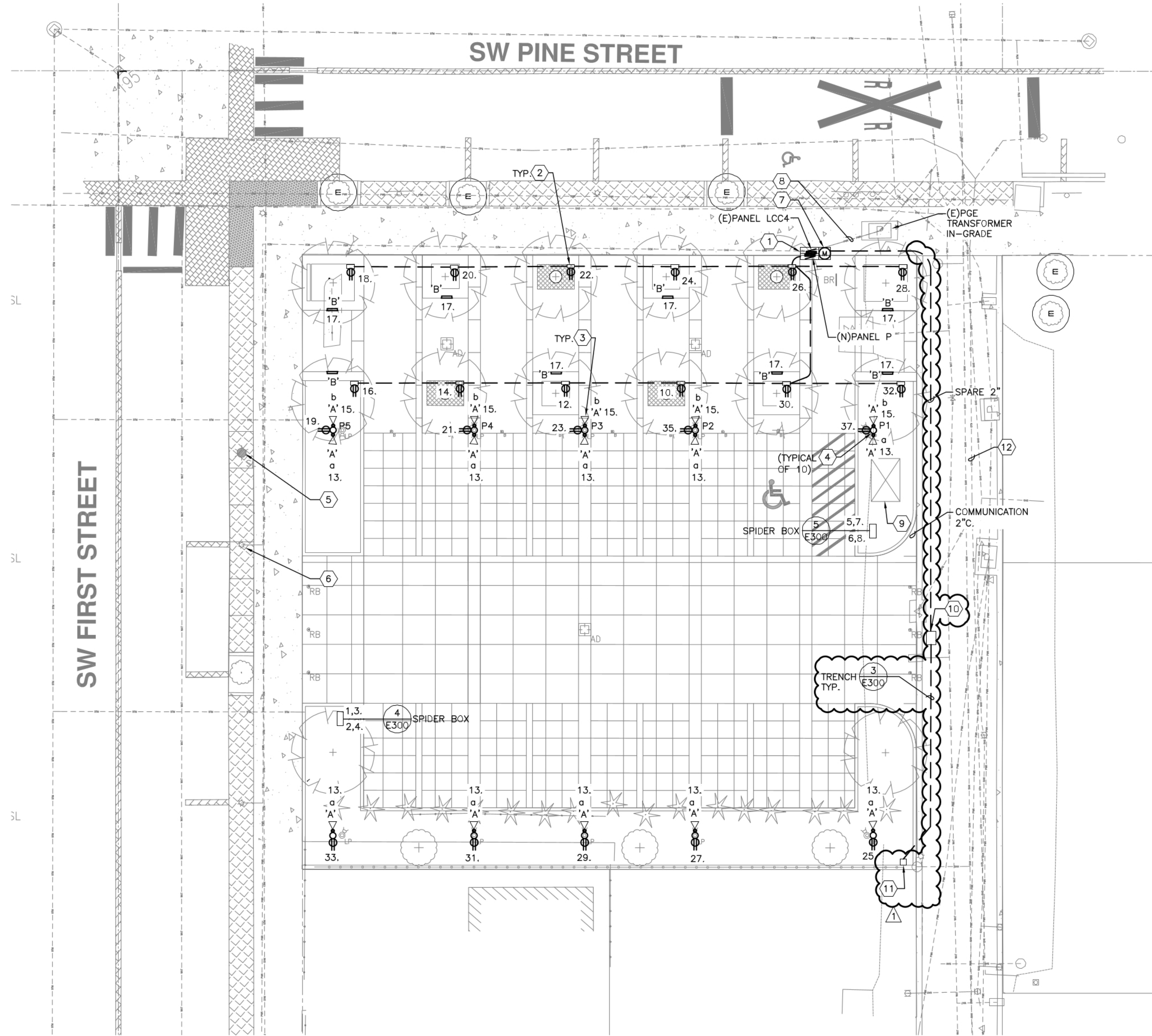
Project No.: 816.003.001 Contact: DENNIS HALL

### GENERAL NOTES

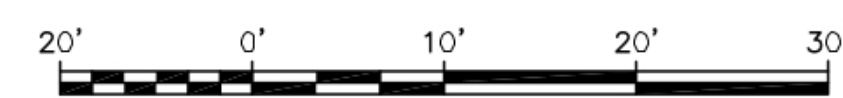
- A. SEE DRAWING E001 FOR SYMBOL LEGEND AND LUMINAIRE SCHEDULE.
- B. ALL CIRCUIT NUMBERS ADJACENT TO DEVICE OR LUMINAIRE IS CONNECTED TO NEW PANEL 'P'.
- C. ALL LOW CASE LETTERS ADJACENT TO LUMINAIRES INDICATED CONTROL DESIGNATION. SEE DETAIL 1/E001 FOR LOCATION OF DIMMERS. SEE DETAIL 5/E300 FOR LIGHTING CONTROL LOCATED IN SERVICE CABINET.
- D. SEE DETAIL 3/E300 FOR TRENCHING REQUIREMENTS.
- E. SEE DRAWING E200 FOR SITE PLAN PHOTOMETRIC WITH PLAZA AND PARKING.

### NOTES THIS SHEET

- 1 EXISTING ELECTRICAL SERVICE CABINET. SEE DETAIL 1/E002 FOR MORE INFORMATION. SEE 3/E002 FOR NEW ELECTRICAL ONE-LINE AND CABINET.
- 2 SEE DETAIL 2/E100 FOR MORE INFORMATION. INSTALL WATERTIGHT STRAIGHT BLADE CONNECTOR WITH SAFETY SHROUD UNDER TREWELL GRATE. HUBBELL #HBL L5-20. COLOR: BLACK (OR APPROVED EQUAL). RECEPTACLE TO HAVE WEATHER-PROOF COVER AND WEATHER-PROOF JUNCTION BOX ATTACHED TO A 1-INCH PIPE POST MOUNTED 1-INCH ABOVE GROUND IN TREWELL AREA. CONNECT 5-FOOT (3) CONDUCTOR, OUTDOOR RATED FLEXIBLE CABLE. RATED FOR OUTDOOR, WET LOCATION USE.
- 3 ALL RECEPTACLES TO BE GFI IN A WEATHER-PROOF ENCLOSURE.
- 4 OWNER PROVIDED POLE WITH LIGHT, RECEPTACLE AND PROVISIONS FOR CANOPY FABRIC SAILS. MANUFACTURER: SHADE SYSTEMS. LUMINAIRES MOUNTED AT 20 FEET ABOVE FINISHED GRADE. RECEPTACLE MOUNTED 18" ABOVE FINISHED GRADE. CONTRACTOR TO INSTALL POLE FOOTING PER PER MANUFACTURER REQUIREMENTS.
- 5 LOCATION OF RELOCATED LIGHT POLE.
- 6 RELOCATE LIGHT POLE 15-FEET NORTH. SEE DRAWING E201 FOR PHOTOMETRIC WITH RELOCATED LUMINAIRE. REMOVE CONDUCTORS BACK TO SOURCE. EXTEND CONDUIT TO EXISTING POLE'S NEW LOCATION. INSTALL NEW CONDUCTORS FOR RELOCATED LIGHT POLE. VERIFY WIRE SIZE PRIOR TO BID. STREET LIGHTING BRANCH CIRCUIT TO REMAIN OPERATIONAL AT ALL TIMES FROM DUSK TO DAWN. SEE CIVIL DRAWINGS FOR CONCRETE REMOVAL AND INSTALLATION AROUND LIGHT POLE.
- 7 ENCLOSE METER IN CABINET WITH WINDOW.
- 8 EXTEND SECONDARY CONDUIT TO NEW METER BASE. UTILITY TO PROVIDE AND TERMINATE NEW SECONDARY CONDUCTORS.
- 9 PGE SWITCH VAULT TO BE PROVIDED AND INSTALLED BY PGE.
- 10 EXISTING FIBER JUNCTION BOX IN ALLEY. COORDINATE WITH CITY FOR ACCESS. CONTRACTOR TO PROVIDE 2" HDPE CONDUITS FOR FIBER PER CITY OF SHERWOOD STANDARDS AND CITY OF SHERWOOD LOW VOLTAGE REPRESENTATIVE. CITY TO PROVIDE AND INSTALL FIBER OPTIC CABLEING.
- 11 STUB-UP CONDUIT WITH PULL STRING IN IRRIGATION CONTROLLER FROM CITY FIBER PULL BOX IN ALLEY. CONTRACTOR TO PROVIDE AND INSTALL THE ETHERNET DEVICE IN IRRIGATION CONTROLLER. MANUFACTURER: CALSENSE CS3-EN SERIES. CONTRACTOR TO PROVIDE AND INSTALL IRRIGATION CONTROLLER. MANUFACTURER: CALSENSE CS3-SSE. CONTRACTOR TO COORDINATE CONNECTION TO FIBER OPTIC CABLE IN ALLEY WITH CITY PRIOR TO START OF WORK. SEE DRAWINGS E100 FOR CONDUIT TO ALLEY AND EXISTING OPTIC CABLE.
- 12 EXISTING CITY FIBER OPTIC INFRASTRUCTURE.



1 **SITE PLAN - ELECTRICAL**  
SCALE: 1" = 10'-0"



Scale: 1" = 10'

2 **TREWELL MOUNTED RECEPTACLE DETAIL**  
NOT TO SCALE.

# SHERWOOD FESTIVAL PLAZA

CITY OF SHERWOOD  
15527 SW Wilamette Street  
Sherwood, OR 97140

REVISIONS

▲ Addendum 1 09-15-2022

SCALE AS SHOWN  
DRAWN BY R&W  
DATE 08.30.2022  
PROJECT NO. 2150

BIDDING DOCUMENTS

SHEET TITLE

SITE PLAN - ELECTRICAL

E100

9615 S.W. Allen Boulevard  
Suite 107  
Beaverton, Oregon 97005  
Phone: (503) 726-2317  
Office: (503) 262-4900  
E-mail: nveng@rweg.com  
Project No.: 816.003.001 Contact: DENNIS HALL

PHOTOMETRIC ANALYSIS SUMMARY TABLE								
STATISTICS		DESIGN VALUES					TARGET VALUES	
DESCRIPTION	CLASSIFICATION	SYMBOL	AVG	MAX	MIN	AVG/MIN	AVG (±)	AVG/MIN (±)
PARKING LIGHTING	COMMERCIAL	+	1.1 fc	19.5 fc	0.2 fc	5.5:1	1.0	10.0:1

lango.hansen

LANDSCAPE ARCHITECTS

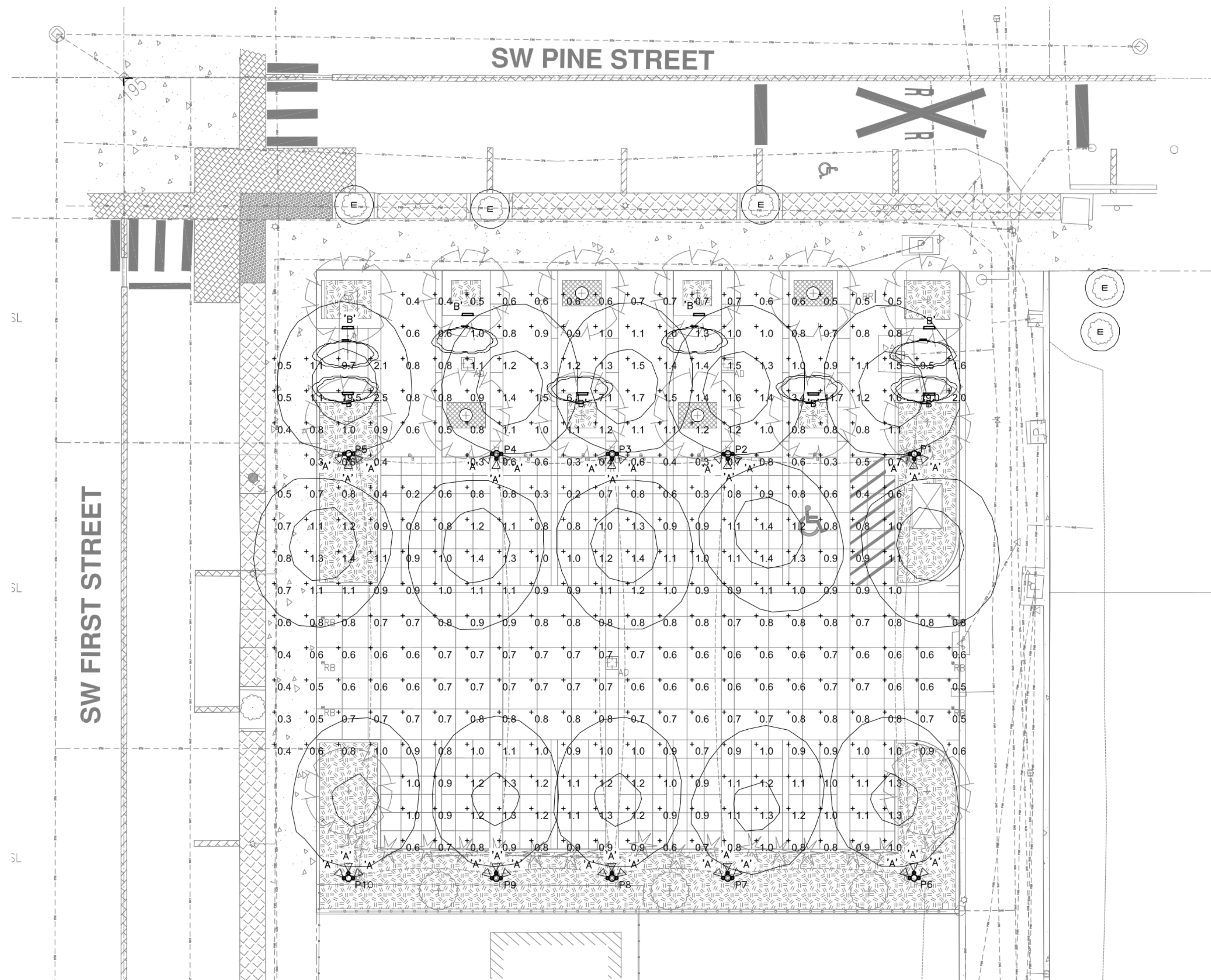
1100 nw glisan #3b  
portland or 97209



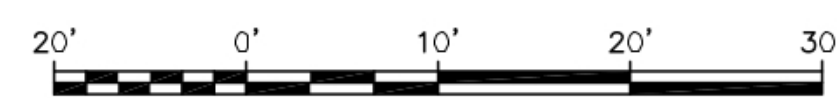
RENEWAL DATE: 12/31/2022

**GENERAL NOTES**

- A. SEE DRAWING E0.1 FOR SYMBOL LEGEND, DETAILS AND LUMINAIRE SCHEDULE.
- B. FOOT CANDLE ISO CURVES ARE SHOWN AS A SINGLE FIXTURE CONTRIBUTION WITH SET VALUES. THE ISO CURVE VALUES MAY NOT MATCH THE CALCULATION PLANE POINT VALUES, SINCE THE CALCULATION PLANE CAN BE A CONTRIBUTION FROM MORE THAN ONE LUMINAIRE.
- C. EXISTING STREET LIGHTING, ARM MOUNTED LUMINAIRE DOES NOT CONTRIBUTE TO ILLUMINATION CALCULATIONS.
- D. PHOTOMETRIC INDICATES ALL TYPE 'A' LUMINAIRE ON POLES TURNED ON FOR EVENT. LUMINAIRES CAN BE ADJUSTED AND DIMMED. ALL FLOODS AIMED AT 45 DEGREES DOWN FROM HORIZONTAL.



**1 SITE PLAN - PHOTOMETRIC**  
E200 SCALE: 1" = 10'-0"



Scale: 1" = 10'

**SHERWOOD FESTIVAL PLAZA**

CITY OF SHERWOOD  
15527 SW Wilamette Street  
Sherwood, OR 97140

REVISIONS  
Addendum 1 09-15-2022

SCALE AS SHOWN  
DRAWN BY R&W  
DATE 08.30.2022  
PROJECT NO. 2150

BIDDING DOCUMENTS

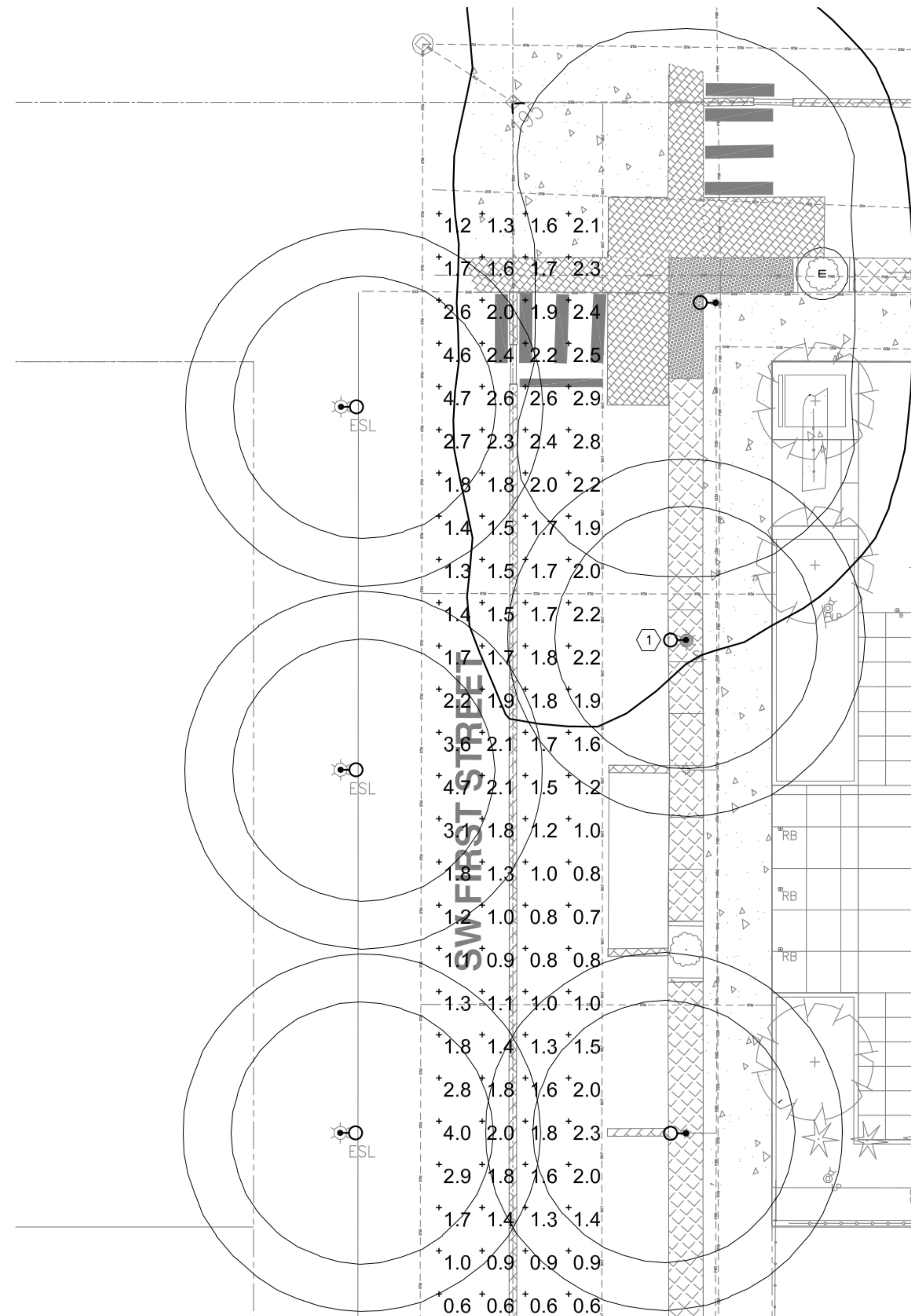
SHEET TITLE

**SITE PLAN - PHOTOMETRIC**

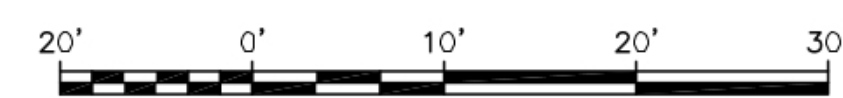
**E200**

**R&W** ENGINEERING, INC.  
9615 S.W. Allen Boulevard  
Suite 107  
Beaverton, Oregon 97005  
Phone: (503) 726-2317  
Office: (503) 262-4900  
E-mail: rveng@rveng.com  
Project No.: 816.003.001 Contact: DENNIS HALL

PHOTOMETRIC ANALYSIS SUMMARY TABLE								
STATISTICS		DESIGN VALUES					TARGET VALUES	
DESCRIPTION	CLASSIFICATION	SYMBOL	AVG	MAX	MIN	AVG/MIN	AVG (±)	AVG/MIN (S)
STREET LIGHTING	COLLECTOR	+	1.8 fc	4.7 fc	0.6 fc	3.0:1	1.2	4.0:1



**1** EXISTING STREET LIGHTING - PHOTOMETRIC  
 E201 SCALE: 1" = 10'-0"



Scale: 1" = 10'

**GENERAL NOTES**

- A. SEE DRAWING E0.1 FOR SYMBOL LEGEND, DETAILS AND LUMINAIRE SCHEDULE.
- B. FOOT CANDLE ISO CURVES ARE SHOWN AS A SINGLE FIXTURE CONTRIBUTION WITH SET VALUES. THE ISO CURVE VALUES MAY NOT MATCH THE CALCULATION PLANE POINT VALUES, SINCE THE CALCULATION PLANE CAN BE A CONTRIBUTION FROM MORE THAN ONE LUMINAIRE.
- C. EXISTING STREET LIGHTING, ARM MOUNTED LUMINAIRE PHOTOMETRIC SHOWN. LUMINAIRE IS LUMEC: DMS50-85QL-SCB5-120-SMB-BE6TX-RAL5001, ARM: M202M-BE6TX-RAL5001, POLE: SPR50-BE6TX-RAL5001, LAMP: PHILIPS LIGHTING 85W QL (3000k)

**NOTES THIS SHEET**

- 1 NEW LOCATION OF LIGHT POLE TO BE RELOCATED. LIGHT POLE MOVED 15-FEET NORTH. SEE DRAWING E100 FOR MORE INFORMATION.

lango.hansen

LANDSCAPE ARCHITECTS

1100 nw glisan #3b  
 portland or 97209



RENEWAL DATE: 12/31/2022

2022.08.14 10:48:30 AM

SHERWOOD FESTIVAL PLAZA

CITY OF SHERWOOD  
 15527 SW Wilamette Street  
 Sherwood, OR 97140

REVISIONS

▲ Addendum 1 09-15-2022

SCALE AS SHOWN  
 DRAWN BY R&W  
 DATE 08.30.2022  
 PROJECT NO. 2150

BIDDING DOCUMENTS

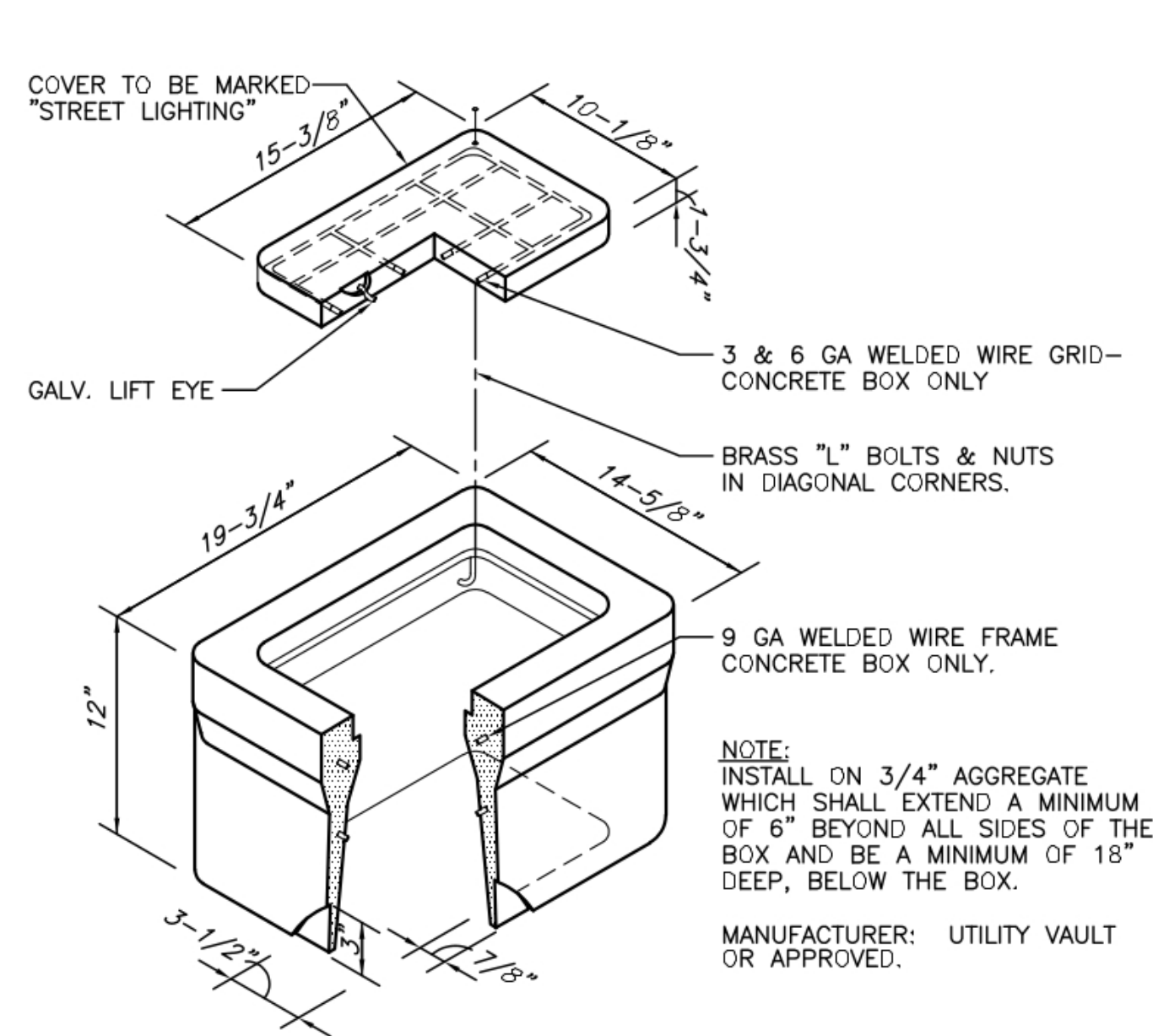
SHEET TITLE

STREET LIGHTING - PHOTOMETRIC

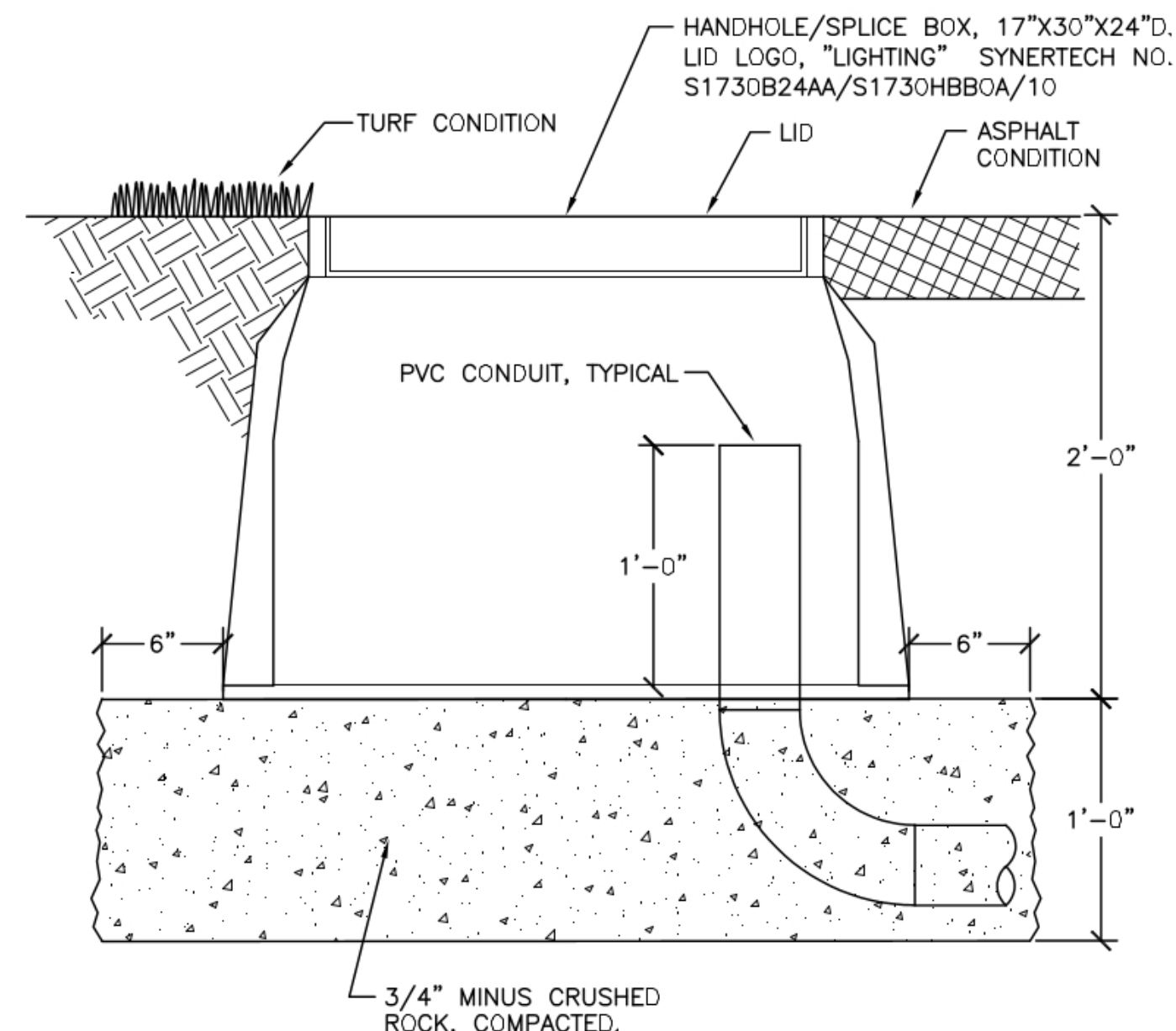
E201

**R&W** ENGINEERING, INC.  
 9615 S.W. Allen Boulevard  
 Suite 107  
 Beaverton, Oregon 97005  
 Phone: (503) 726-2317  
 Office: (503) 262-4900  
 E-mail: rveng@rveng.com  
 Project No.: 816.003.001 Contact: DENNIS HALL

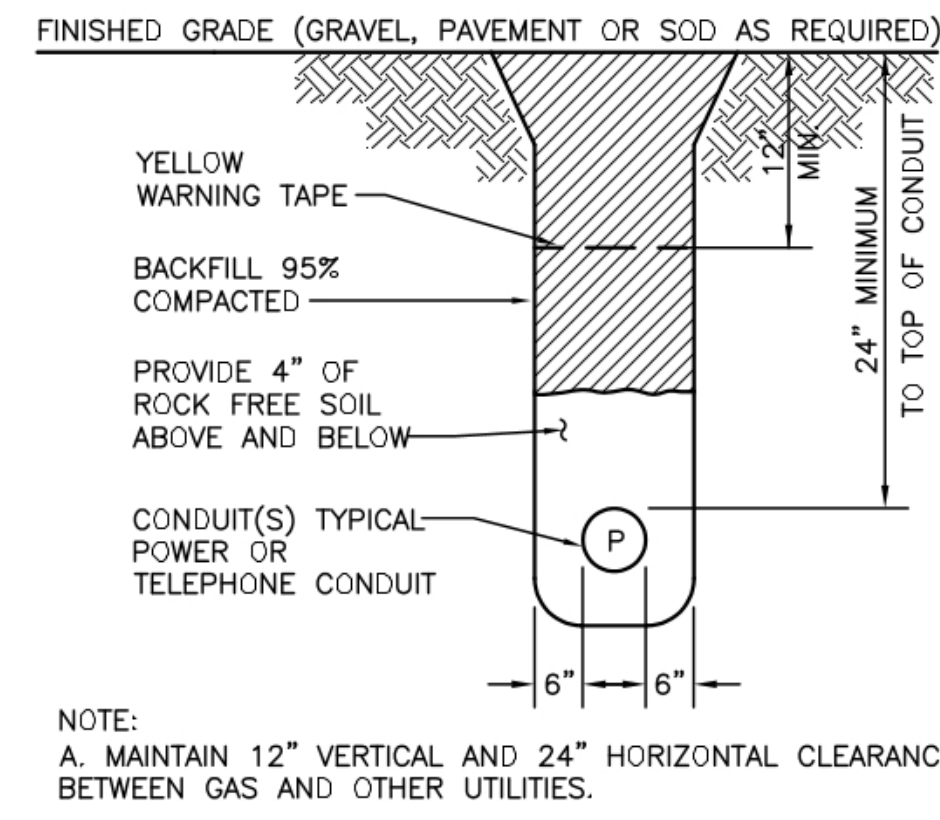




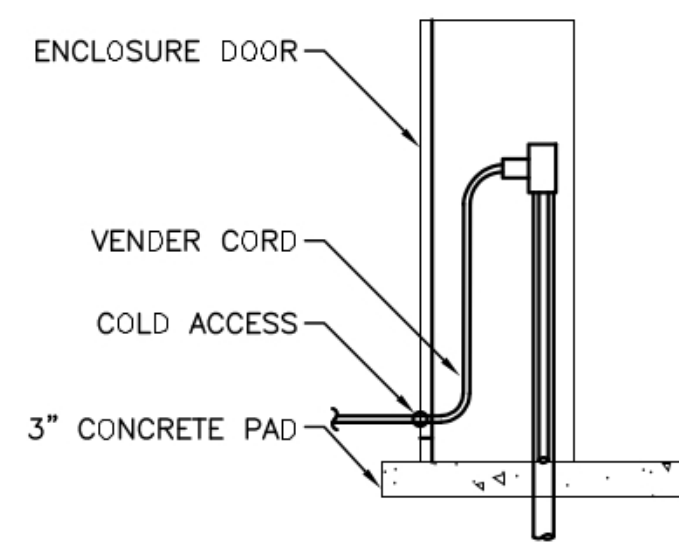
**1**  
**E300** PULL BOX DETAIL  
NOT TO SCALE



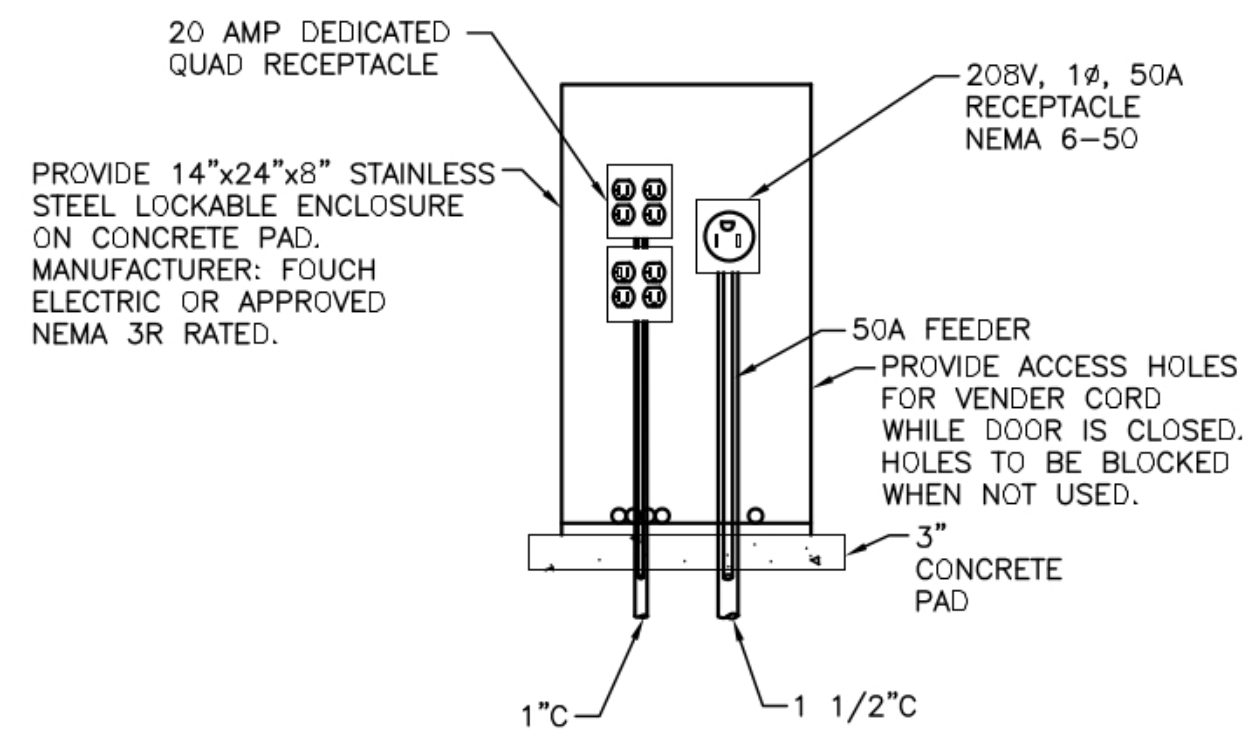
**2**  
**E300** FLUSH HANDHOLE/SPLICE BOX  
SCALE: NONE



**3**  
**E300** POWER CONDUIT TRENCH DETAIL  
SCALE: NTS

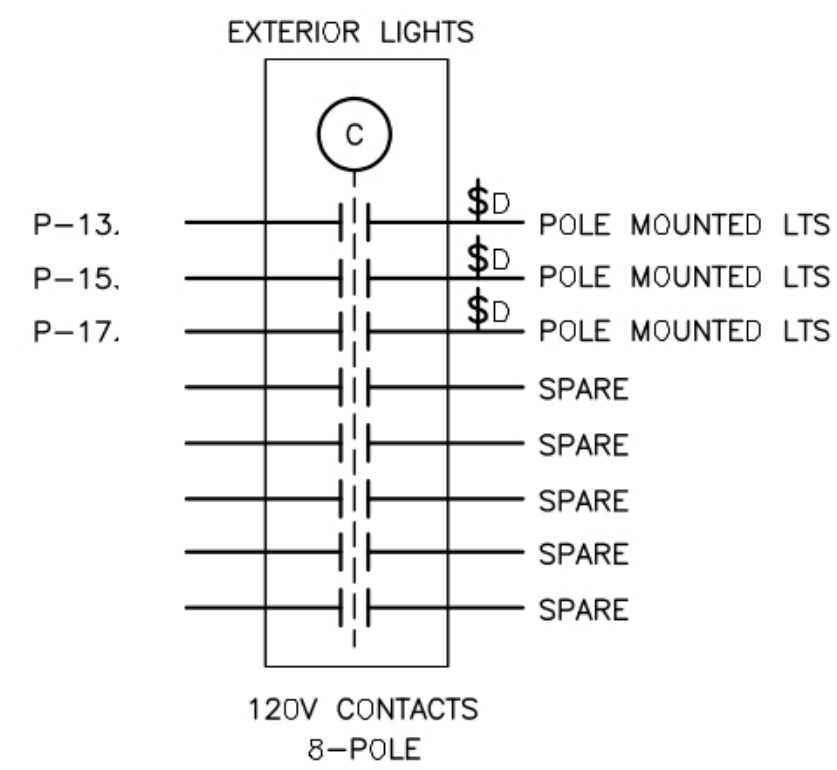
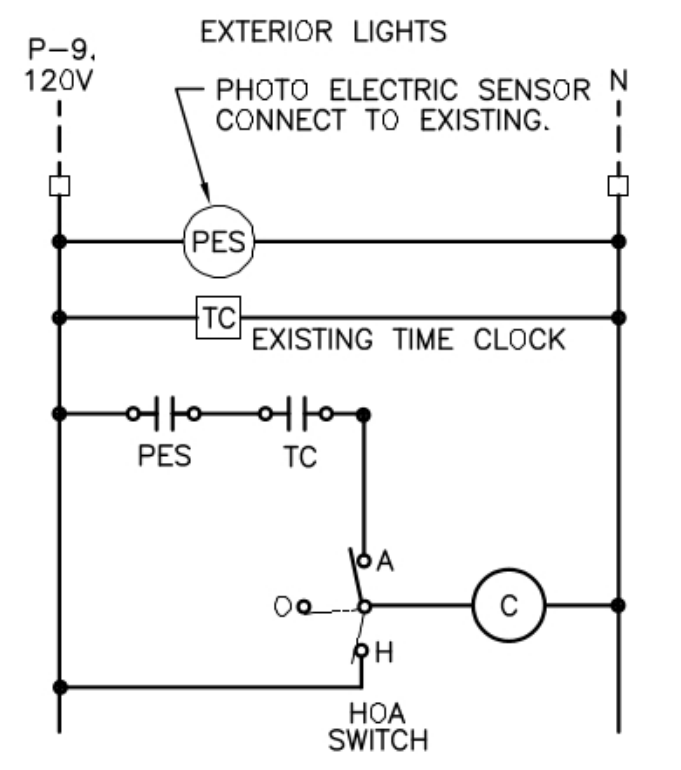


SIDE VIEW



FRONT VIEW

**5**  
**E300** SPIDER BOX DETAIL  
SCALE: NONE



NOTES THIS DETAIL  
1. TIME CLOCK MANUFACTURER: INTERMATIC ET2805C OR APPROVED.  
2. SEE DETAIL 3/E002 FOR LOCATION OF CONTROLS.

**6**  
**E300** LIGHTING CONTROL DIAGRAM  
NO SCALE

**GENERAL NOTES**

- A. SEE DRAWING E001 FOR SYMBOL LEGEND, AND LUMINAIRE SCHEDULE.
- B. ALL SPLICES IN UNDERGROUND BOXES OR DIRECT BURIED SHALL BE INSULATED AND WATERPROOFED, USING SCOTCHCAST EPOXY SPLICING COMPOUNDS SUITED FOR THE PURPOSE.

lango.hansen

LANDSCAPE ARCHITECTS

1100 nw glison #3b  
portland or 97209



SHERWOOD FESTIVAL PLAZA

CITY OF SHERWOOD  
15527 SW Willamette Street  
Sherwood, OR 97140

REVISIONS  
Addendum 1 09-15-2022

SCALE AS SHOWN  
DRAWN BY R&W  
DATE 08.30.2022  
PROJECT NO. 2150

BIDDING DOCUMENTS

SHEET TITLE

ELECTRICAL DETAILS

E300

