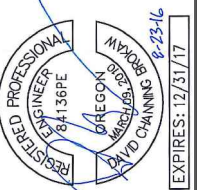


CITY OF SHERWOOD

DOWNTOWN INTERSECTION MONUMENT REMOVAL

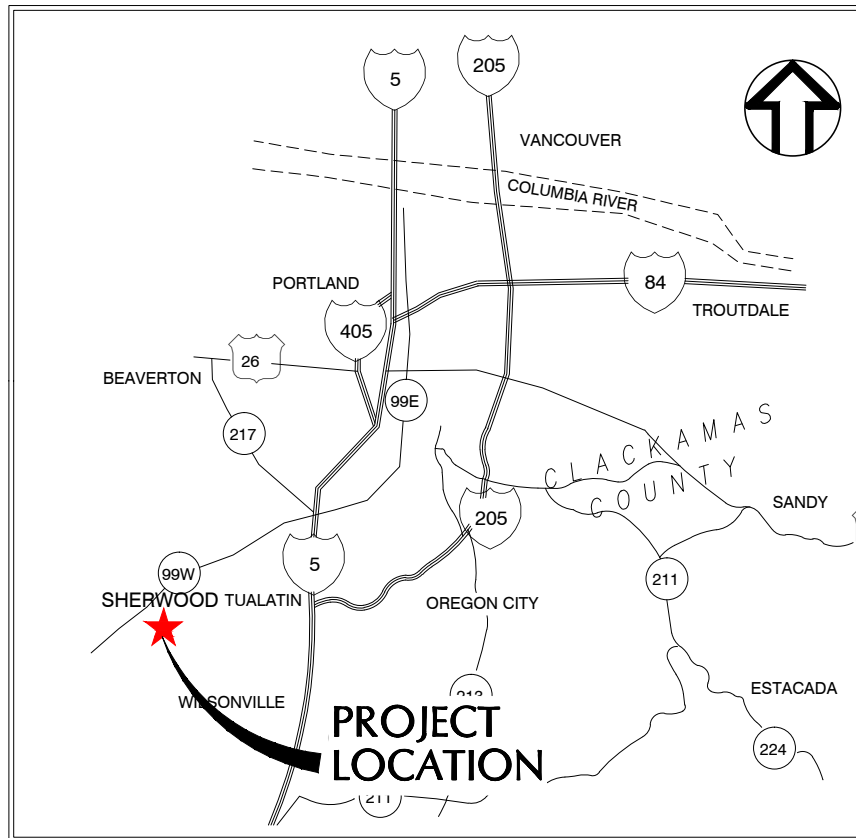
AUGUST 2016



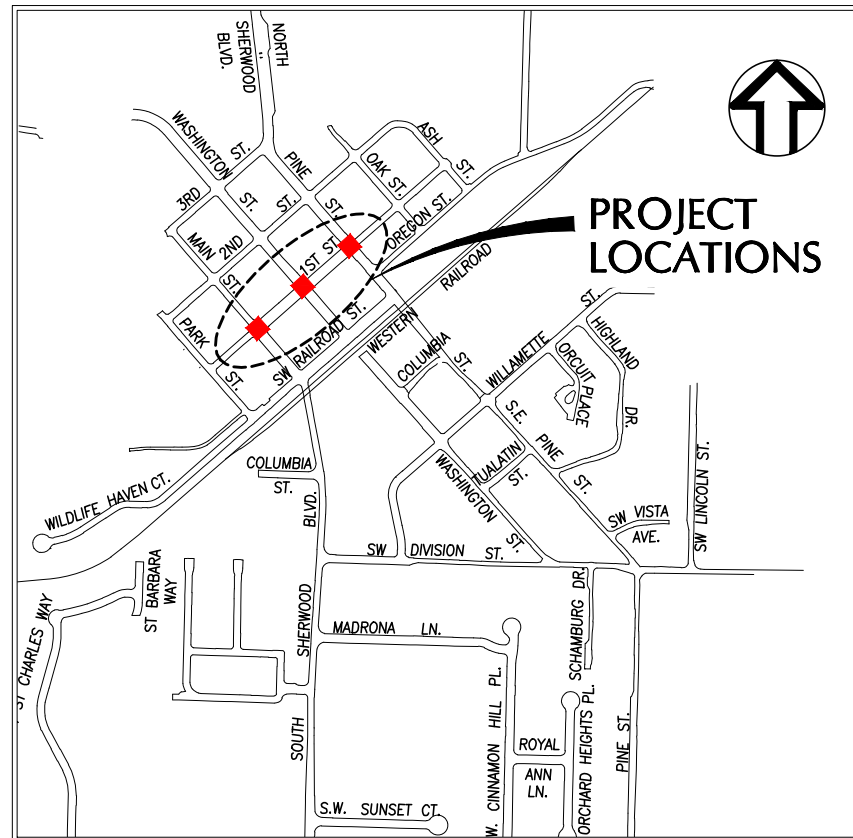
| NO. | REVISION | BY | DATE |
|-----|----------|----|------|
| | | | |

DESIGNED BY: J.V.
 DRAWN BY: CK/TS
 REVISION: DB

ONE INCH AT FULL SCALE.
 IF NOT ONE INCH ADJUST SCALE ACCORDINGLY



LOCATION MAP
NOT TO SCALE



PROJECT SITE MAP
NOT TO SCALE



Owner: City of Sherwood
 22560 SW Pine Street
 Sherwood, Oregon 97140
 (503) 925-2307
 Contact: Jason Waters, Project Manager



Civil Engineer: Wallis Engineering
 215 W. 4th Ave., Suite 200
 Vancouver, Washington 98660
 (360) 695-7041
 Contact: Dave Brokaw, P.E.

SHEET INDEX

- C1 COVER
- C2 GENERAL NOTES AND LEGEND
- C3 PHASING AND DEMOLITION PLAN
- C4 1ST AND MAIN STREET PLAN
- C5 1ST AND WASHINGTON STREET PLAN
- C6 1ST AND PINE STREET PLAN
- C7 SCORING PLAN
- D1 CITY OF SHERWOOD DETAILS
- D2 ILLUMINATION DETAILS
- D3 ODOT STANDARD DETAILS

COVER



DATE: 08/2016
 PROJECT NO: 1415A

CITY OF SHERWOOD
 DOWNTOWN INTERSECTION
 MONUMENT REMOVAL



DRAWING NO:

C1

1 OF 10

Attention Excavators: Oregon Law requires the contractor to follow rules adopted by the Oregon Utility Notification Center. Those rules are set forth in OAR 952-001-0010 through OAR 952-001-0090. The contractor may obtain copies of these rules from the center by calling (503) 232-1987 or by accessing the Internet at www.state.or.us/government.htm. The contractor must notify the center at least 2 business days, but not more than 10 business days, before commencing an excavation. Call (503) 246-6699.

GENERAL NOTES

- CONTRACTOR SHALL NOTIFY CITY OF SHERWOOD ENGINEERING DEPARTMENT (AT 503-925-2306) TWO BUSINESS DAYS PRIOR TO COMMENCEMENT OF WORK ON GRADING, PUBLIC IMPROVEMENTS, OR STORM WATER TREATMENT FACILITIES.
- ALL CONSTRUCTION WORK AND MATERIALS SHALL CONFORM TO APPLICABLE CITY OF SHERWOOD STANDARDS CONSTRUCTION SPECIFICATIONS, CLEAN WATER SERVICES (CWS) DESIGN AND CONSTRUCTION STANDARDS, UNIFORM PLUMBING CODE (UPC) AND UNIFORM BUILDING CODE (UBC). CONTRACTOR AND SUBCONTRACTOR(S) SHALL HAVE A MINIMUM OF ONE SET OF APPROVED PLANS AND CITY OF SHERWOOD STANDARD CONSTRUCTION SPECIFICATIONS ON THE JOB SITE AT ALL TIMES DURING CONSTRUCTION.
- ATTENTION EXCAVATORS:** OREGON LAW REQUIRES YOU TO FOLLOW RULES ADOPTED BY OREGON UTILITY NOTIFICATION CENTER. THOSE RULES ARE SET FORTH IN OAR 952-001-0010 THROUGH OAR 952-001-0090. YOU MAY OBTAIN COPIES OF THESE RULES FROM THE CENTER BY CALLING (503) 232-1987. IF YOU HAVE ANY QUESTIONS ABOUT THESE RULES, YOU MAY CONTACT THE CALL CENTER. **YOU MUST NOTIFY THE CENTER AT LEAST TWO BUSINESS DAYS, BUT NOT MORE THAN 10 BUSINESS DAYS, BEFORE COMMENCING EXCAVATION. CALL (503) 246-6699**
- ALL TRENCH LINES AND EXCAVATIONS SHALL BE PROPERLY SHORED AND BRACED TO PREVENT CAVING. UNUSUALLY DEEP EXCAVATIONS MAY REQUIRE EXTRA SHORING AND BRACING. ALL SHEETING, SHORING, AND BRACING OF TRENCHES SHALL CONFORM TO OREGON OCCUPATIONAL SAFETY AND HEALTH DIVISION (OSHA) REGULATIONS AND CITY OF SHERWOOD STANDARD SPECIFICATIONS.
- CONTRACTOR IS TO FIELD VERIFY LOCATION AND DEPTH OF ALL UTILITIES PRIOR TO CONSTRUCTION
- SITE EROSION CONTROL PLAN AND BMP'S MEETING CWS STANDARDS TO BE IN PLACE AND APPROVED PRIOR TO CONSTRUCTION
- A TEMPORARY USE PERMIT, SUBJECT TO SECTION 16.86 OF THE CITY OF SHERWOOD CODE, IS REQUIRED PRIOR TO ANY USE OF AN ON-SITE CONSTRUCTION TRAILER. UNDER NO CIRCUMSTANCE SHALL THE TRAILER BE LOCATED IN THE PUBLIC RIGHT-OF-WAY.
- THE CONTRACTOR SHALL OBTAIN ALL REQUIRED PERMITS AND LICENSES BEFORE STARTING CONSTRUCTION. A COPY OF THE REQUIRED PERMITS AND ATTACHMENTS SHALL BE AT THE WORK SITE AND AVAILABLE DURING CONSTRUCTION.
- TRAFFIC CONTROL SHALL BE IN ACCORDANCE WITH THE CURRENT MANUAL ON UNIFORM TRAFFIC CONTROL DEVICES. TRAFFIC CONTROL PLAN SHALL BE SUBJECT TO THE APPROVAL OF THE CITY.
- ANY INSPECTION OR CONSTRUCTION OBSERVATION BY THE CITY, COUNTY, STATE, OR OTHER JURISDICTIONAL AGENCIES SHALL NOT, IN ANY WAY, RELIEVE THE CONTRACTOR FROM ANY OBLIGATION TO PERFORM THE WORK IN COMPLIANCE WITH THE APPLICABLE CODES, REGULATIONS, CITY STANDARDS, AND PROJECT CONTRACT DOCUMENTS.
- CONTRACTOR SHALL PROTECT AND MAINTAIN ALL EXISTING STRUCTURES AND UTILITIES NOT SHOWN TO BE REMOVED. CONTRACTOR SHALL REPLACE OR REPAIR ANY EXISTING STRUCTURES (SIDEWALKS, CURB, FENCE, STREET TREES, ETC.) DAMAGED DURING CONSTRUCTION, IN ACCORDANCE WITH CITY STANDARDS.
- NO TRENCHES OR PITS WILL BE ALLOWED TO REMAIN OPEN OVERNIGHT. ALL TRENCHES AND PITS SHALL BE COVERED WITH STEEL PLATES OR FILLED IN AT NIGHT.
- ANY ALTERATIONS OR VARIATIONS FROM THESE PLANS, EXCEPT MINOR FIELD ADJUSTMENTS NEEDED TO MEET EXISTING FIELD CONDITIONS, SHALL BE APPROVED BY THE ENGINEER AND APPLICABLE REGULATORY AGENCY REPRESENTATIVE.
- THIS PROJECT INCLUDES WORK ASSOCIATED WITH CITY-OWNED FIBER OPTIC UTILITIES. THE CONTRACTOR SHALL COORDINATE WITH THE CITY PRIOR TO ALL WORK WITH THESE UTILITIES.

TRAFFIC CONTROL NOTES

- TRAFFIC CONTROL PLANS SHALL BE PREPARED BY THE CONTRACTOR. THE INITIAL TRAFFIC CONTROL PLAN MUST BE APPROVED BY THE ENGINEER PRIOR TO BEGINNING CONSTRUCTION.
- THE CONTRACTOR SHALL PROVIDE TEMPORARY PROTECTION AND DIRECTION OF TRAFFIC IN ACCORDANCE WITH THE MOST CURRENT VERSION OF THE MUTCD (WITH OREGON STATE AMENDMENTS), ODOT STANDARD PLANS/SPECIFICATIONS, AND THE CONTRACT SPECIAL PROVISIONS.
- USE TEMPORARY PAVEMENT MARKERS, BARRIERS, BARRICADES, CAUTION TAPE, AND SIGNS AS REQUIRED TO SAFELY DETOUR PEDESTRIANS, BICYCLISTS, AND VEHICLE TRAFFIC AROUND THE CONSTRUCTION. LABEL TYPE AND LOCATION FOR ALL TEMPORARY TRAFFIC CONTROL MEASURES ON TRAFFIC CONTROL PLANS.
- APPROPRIATE METHODS OF PEDESTRIAN, BICYCLE, AND VEHICULAR TRAFFIC CONTROL, INCLUDING FLAGGERS, SHALL BE EMPLOYED BY THE CONTRACTOR TO THE EXTENT DEEMED NECESSARY BY THE TRAFFIC CONTROL SUPERVISOR AND AS REQUIRED BY THE APPLICABLE AGENCY TO PROTECT WORKERS OR THIRD PARTIES.
- FURNISH TEMPORARY TRAFFIC CONTROL SIGNS AND SUPPORTS AS NECESSARY TO COMPLETE THE WORK AND AS REQUIRED BY THE ENGINEER. TEMPORARY SIGNS INCLUDE TOURIST-ORIENTED DIRECTIONAL SIGNS (TODS) TO NOTIFY THE PUBLIC THAT DOWNTOWN BUSINESSES ARE OPEN.
- WORK HOURS: MONDAY-FRIDAY 7:30AM TO 6:00PM. CONTRACTOR TO ADHERE TO THE CITY NOISE ORDINANCE 9.52.040 REGARDING PERMISSIBLE SOUND LEVELS.
- ACCESS FOR EMERGENCY SERVICES SHALL BE MAINTAINED AT ALL TIMES. CONTRACTOR SHALL INFORM EMERGENCY SERVICES OF ALL TRAFFIC CONTROL MODIFICATIONS, PRIOR TO IMPLEMENTATION.
- CONTRACTOR TO PROVIDE A MINIMUM 48 HOURS NOTICE TO ALL PROPERTIES IN PROJECT AREA FOR ANY CHANGE/INTERRUPTION IN ACCESS.
- MAINTAIN BUSINESS ACCESS AT ALL TIMES. PROVIDE TEMPORARY PEDESTRIAN ACCESS BRIDGES BETWEEN BUSINESS DOORWAY THRESHOLDS AND STREET WHEN SIDEWALKS ARE BEING CONSTRUCTED. CONTRACTOR SHALL PROVIDE SAFE DELINEATED TEMPORARY INTERSECTION CROSSING LOCATIONS WHERE EXISTING CROSSINGS ARE WITHIN CONSTRUCTION ZONE.
- CONTRACTOR TO INSTALL "DOWNTOWN OPEN FOR BUSINESS SIGNS" AT EACH END OF THE PROJECT END OF THE PROJECT AREA. SIGNS TO BE MINIMUM 48" X 24". SEE SPECIFICATIONS FOR ADDITIONAL REQUIREMENTS.
- CONTRACTOR SHALL COORDINATE ACCESS FOR SERVICES INCLUDING, BUT NOT LIMITED TO, MAIL DELIVERY, TRASH PICKUP, PUBLIC TRANSPORTATION, AND ANY OTHER SPECIAL TRANSPORTATION SERVICES THAT EXIST WITHIN THE PROJECT AREA.
- CONTRACTOR SHALL MAINTAIN MINIMUM 10-FOOT WIDE TRAVEL LANES DURING CONSTRUCTION THROUGHOUT THE PROJECT AT ALL TIMES. WHEN A SINGLE LANE IS PROVIDED, IN THE PRESENCE OF FLAGGERS, MINIMUM WIDTH SHALL BE 12 FEET.

EROSION CONTROL NOTES

- THE CONTRACTOR IS RESPONSIBLE FOR THE INSTALLATION AND MAINTENANCE OF ALL EROSION AND SEDIMENT CONTROL MEASURES IN ACCORDANCE WITH LOCAL, STATE, AND FEDERAL REGULATIONS.
- THE IMPLEMENTATION OF THESE ESC PLANS AND CONSTRUCTION MAINTENANCE, REPLACEMENT, AND UPGRADING OF THESE ESC FACILITIES IS THE RESPONSIBILITY OF THE CONTRACTOR UNTIL ALL CONSTRUCTION IS COMPLETED AND APPROVED BY THE LOCAL JURISDICTION, AND VEGETATION/LANDSCAPING IS ESTABLISHED.
- THE BOUNDARIES OF THE CLEARING LIMITS SHOWN ON THIS PLAN SHALL BE CLEARLY MARKED IN THE FIELD PRIOR TO CONSTRUCTION DURING THE CONSTRUCTION PERIOD. NO DISTURBANCE BEYOND THE CLEARING LIMITS SHALL BE PERMITTED. THE MARKINGS SHALL BE MAINTAINED BY THE APPLICANT/CONTRACTOR FOR THE DURATION OF CONSTRUCTION.
- THE ESC FACILITIES SHOWN ON THIS PLAN MUST BE CONSTRUCTED IN CONJUNCTION WITH ALL CLEARING AND GRADING ACTIVITIES, AND IN SUCH A MANNER AS TO INSURE THAT SEDIMENT AND SEDIMENT LADEN WATER DOES NOT ENTER THE DRAINAGE SYSTEM, ROADWAYS, OR VIOLATE APPLICABLE WATER STANDARDS.
- THE ESC FACILITIES SHOWN ON THIS PLAN ARE MINIMUM REQUIREMENTS FOR ANTICIPATED SITE CONDITIONS. DURING THE CONSTRUCTION PERIOD, THESE ESC FACILITIES SHALL BE UPGRADED AS NEEDED FOR UNEXPECTED STORM EVENTS AND TO ENSURE THAT SEDIMENT AND SEDIMENT LADEN WATER DOES NOT LEAVE THE SITE.
- THE ESC FACILITIES SHALL BE INSPECTED DAILY BY THE APPLICANT/CONTRACTOR AND MAINTAINED AS NECESSARY TO ENSURE THEIR CONTINUED FUNCTIONING.
- AT NO TIME SHALL SEDIMENT BE ALLOWED TO ACCUMULATE MORE THAN 1/3 THE BARRIER HEIGHT. ALL CATCH BASINS AND CONVEYANCE LINES SHALL BE CLEANED PRIOR TO PAVING. THE CLEANING OPERATIONS SHALL NOT FLUSH SEDIMENT LADEN WATER INTO THE DOWNSTREAM SYSTEM.
- STABILIZED GRAVEL ENTRANCES SHALL BE INSTALLED AT THE BEGINNING OF CONSTRUCTION AND MAINTAINED FOR THE DURATION OF THE PROJECT. ADDITIONAL MEASURES MAY BE REQUIRED TO INSURE THAT ALL PAVED AREAS ARE KEPT CLEAN FOR THE DURATION OF THE PROJECT.
- STORM DRAIN INLETS, BASINS, AND AREA DRAINS SHALL BE PROTECTED UNTIL PAVEMENT SURFACES ARE COMPLETED AND/OR VEGETATION IS RE-ESTABLISHED.
- IF THERE ARE EXPOSED SOILS OR SOILS NOT FULLY ESTABLISHED FROM OCTOBER 1ST THROUGH MAY 31ST, THE WET WEATHER EROSION PREVENTION MEASURES WILL BE IN EFFECT. SEE THE EROSION PREVENTION AND SEDIMENT CONTROL PLANNING AND DESIGN MANUAL (CHAPTER 4) OF CLEAN WATER SERVICES FOR REQUIREMENTS.
- THE CONTRACTOR SHALL REMOVE ESC MEASURES WHEN VEGETATION IS FULLY ESTABLISHED.
- ALL PUMPING OF SEDIMENT-LADEN WATER SHALL BE DISCHARGED OVER AN UNDISTURBED, PREFERABLY VEGETATED AREA, AND THROUGH A SEDIMENT CONTROL BMP (FILTER BAG, DIRT BAG, ETC.)

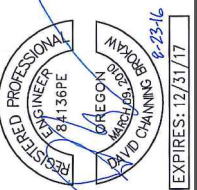
BASIS OF BEARING

- ALL PLAN INFORMATION IS BASED ON ASBUILT DATA AND IS APPROXIMATE.

LEGEND

| EXISTING | |
|----------|---|
| | EXISTING RIGHT OF WAY |
| | EXISTING EDGE OF PAVEMENT |
| | EXISTING EXPOSED AGGREGATE CONCRETE |
| | EXISTING CONCRETE SIDEWALK |
| | EXISTING TRUNCATED DOME PAVERS ON SLAB |
| | EXISTING TYPE A MONUMENT WITH LIGHT POLE |
| | EXISTING TYPE B MONUMENT |
| | EXISTING WALL |
| | EXISTING CATCH BASIN |
| | EXISTING AREA DRAIN |
| | EXISTING TRENCH DRAIN |
| | EXISTING STORM DRAIN MANHOLE |
| | EXISTING FIRE HYDRANT |
| | EXISTING WATER METER |
| | EXISTING WATER VALVE |
| | EXISTING ELECTRICAL JUNCTION BOX |
| | EXISTING UTILITY POLE |
| | EXISTING SIGN |
| | EXISTING STRUCTURE |
| | EXISTING GAS LINE |
| | EXISTING UNDERGROUND TELEPHONE |
| | EXISTING WATER LINE |
| | EXISTING STORM DRAIN LINE |
| | EXISTING UNDERGROUND POWER |
| | EXISTING JOINT TRENCH, FIBER OPTIC AND LIGHTING |
| | EXISTING UNDERGROUND TV |

| PROPOSED | |
|----------|-----------------------------------|
| | PROPOSED DEMOLITION LIMITS |
| | PROPOSED CEMENT CONCRETE SIDEWALK |
| | PROPOSED LIGHT POLE |
| | PROPOSED JUNCTION BOX |
| | PROPOSED BOLLARD |
| | PROPOSED INLET PROTECTION |
| | PROPOSED FIBER OPTIC |



| NO. | REVISION | BY | DATE |
|-----|----------|----|------|
| | | | |
| | | | |
| | | | |
| | | | |

DESIGNED BY: JV
DRAWN BY: CK/TS
CHECKED BY: DB

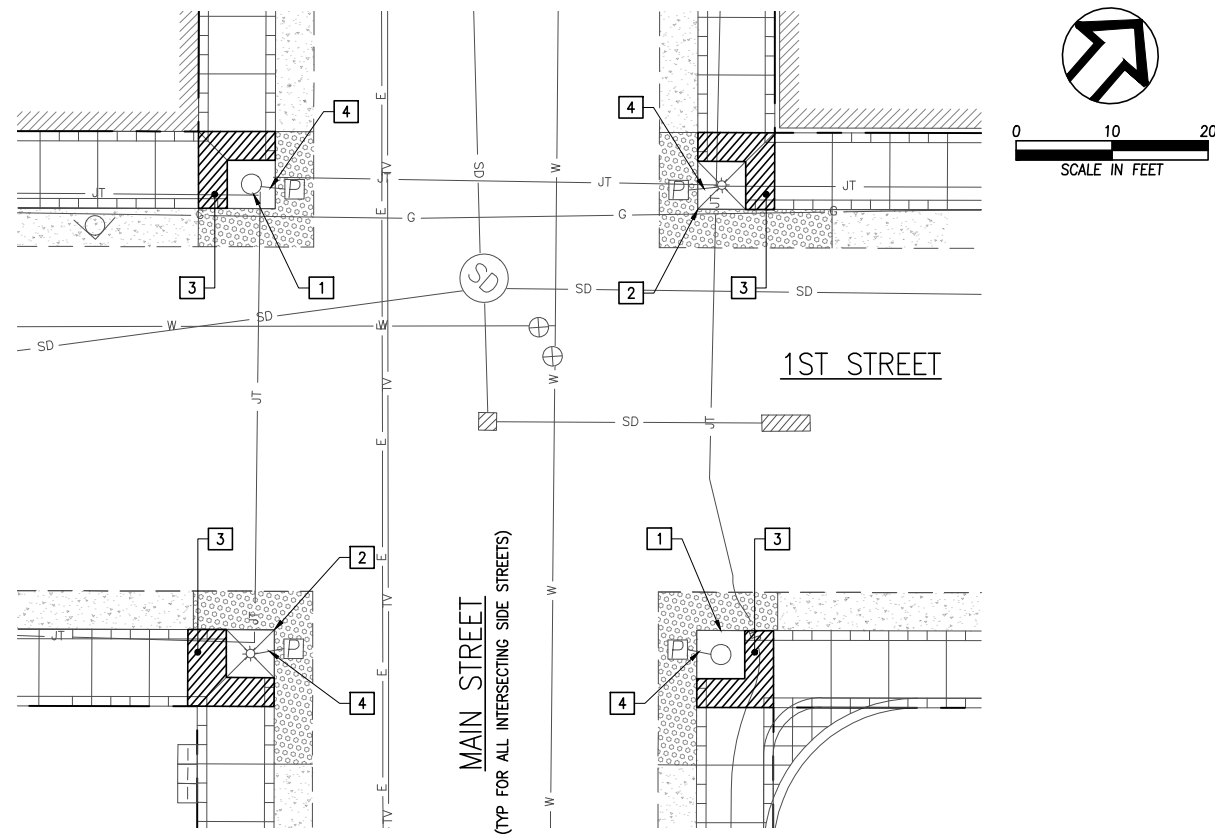
SCALE: 0" = 1" AT FULL SCALE. IF NOT ONE INCH ADJUST SCALE ACCORDINGLY.

GENERAL NOTES AND LEGEND

wallis engineering
 3800 66th Ave NE
 Vancouver, WA 98664
 360.695.7041

DATE: 08/2016
 PROJECT NO: 1415A





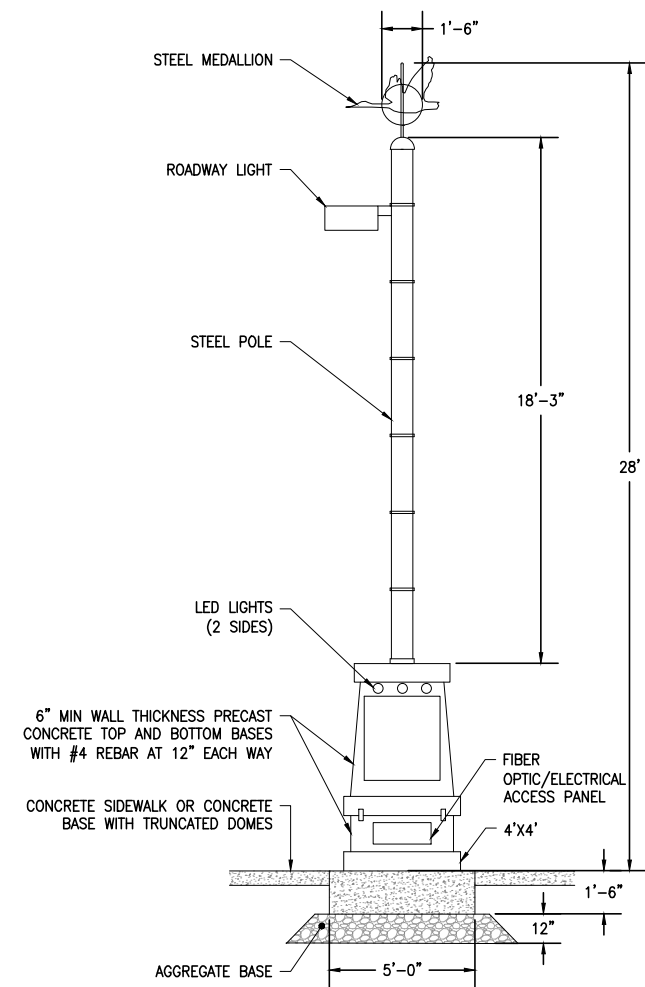
TYPICAL DEMOLITION PLAN

DEMOLITION NOTES:

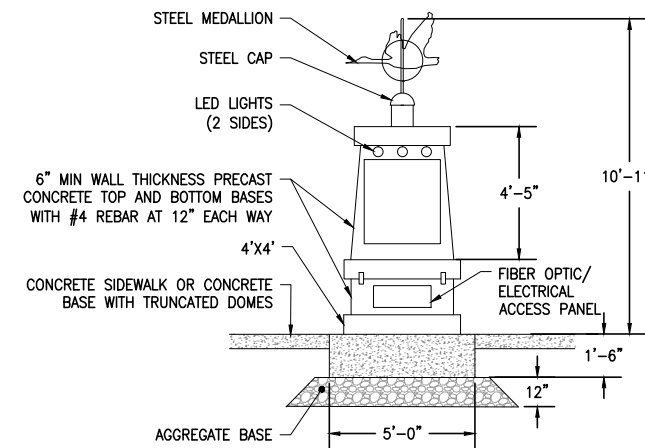
- 1 REMOVE EXISTING TYPE B MONUMENT. SALVAGE LED LIGHTS AND METAL COMPONENTS TO CITY PUBLIC WORKS. REMOVE MONUMENT FOUNDATION. PROTECT EXISTING FIBER OPTIC AND ELECTRICAL UTILITIES WITHIN AND ADJACENT TO MONUMENT. BACKFILL WITH 3/4"-0" COMPACTED AGGREGATE BASE TO SIDEWALK SUBGRADE AS REQUIRED.
- 2 REMOVE EXISTING TYPE A MONUMENT AND LIGHT POLE. SALVAGE LED LIGHTS, STREET LIGHT, AND METAL COMPONENTS TO CITY PUBLIC WORKS. REMOVE MONUMENT AND LIGHT POLE FOUNDATION. PROTECT EXISTING FIBER OPTIC AND ELECTRICAL UTILITIES WITHIN AND ADJACENT TO MONUMENT. BACKFILL WITH 3/4"-0" COMPACTED AGGREGATE BASE TO SIDEWALK SUBGRADE AS REQUIRED.
- 3 SAWCUT AND REMOVE EXISTING CEMENT CONCRETE SIDEWALK. COORDINATE REMOVAL LIMITS WITH ENGINEER PRIOR TO ANY SAWCUTTING. SET UP TEMPORARY PEDESTRIAN TRAFFIC CONTROL AND ACCESS THROUGH THE WORK ZONE PRIOR TO REMOVAL WORK.
- 4 DISCONNECT AND REMOVE EXISTING (3) #8 AWG ILLUMINATION WIRING BETWEEN MONUMENT AND EXISTING JUNCTION BOX. MAINTAIN ALL OTHER WIRING. PROTECT EXISTING JUNCTION BOX AND EXISTING CONDUIT BETWEEN JUNCTION BOX AND MONUMENT.

PHASING NOTES:

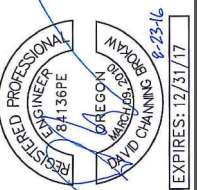
1. THE CONTRACTOR SHALL COMPLETE THE PROJECT IN ACCORDANCE WITH AN APPROVED PHASING PLAN AND IN ACCORDANCE WITH THE SPECIAL PROVISIONS. THESE NOTES REFLECT THE GENERAL PHASING REQUIREMENTS FOR THE PROJECT. THE CONTRACTOR SHALL SUBMIT A DETAILED PHASING PLAN FOR REVIEW AND APPROVAL OF THE ENGINEER PRIOR TO BEGINNING WORK.
2. THERE SHALL BE TWO PHASES OF WORK, AS DESCRIBED IN THE FOLLOWING NOTES. PHASE II AT AN INTERSECTION MAY NOT COMMENCE UNTIL PHASE I AT THAT INTERSECTION IS COMPLETE. MORE THAN ONE INTERSECTION MAY BE WORKED ON SIMULTANEOUSLY.
 - A. COMPLETE UTILITY LOCATES AND COORDINATE WITH ENGINEER TO ENSURE NO CONFLICTS BETWEEN PROPOSED IMPROVEMENTS AND EXISTING UTILITIES.
 - B. REMOVE TYPE B MONUMENTS, FOUNDATIONS, AND SURFACING AS SHOWN.
 - C. POT HOLE TO ENSURE NO CONFLICTS WITH EXISTING UTILITIES.
 - D. CONSTRUCT NEW LIGHT POLE FOUNDATION AND INSTALL NEW LIGHT POLE. CONNECT LIGHT POLE TO EXISTING ELECTRICAL POWER.
 - E. INSTALL JUNCTION BOX, CONDUIT, AND PULL STRING FOR CITY FIBER.
 - F. INSTALL BOLLARDS.
 - G. REPLACE SIDEWALK WHERE REMOVED.
4. PHASE II SHALL INCLUDE, BUT NOT BE LIMITED TO, THE FOLLOWING WORK TASKS:
 - A. COMPLETE UTILITY LOCATES AND COORDINATE WITH ENGINEER TO ENSURE NO CONFLICTS BETWEEN PROPOSED IMPROVEMENTS AND EXISTING UTILITIES.
 - B. REMOVE TYPE A MONUMENTS, FOUNDATIONS, LIGHT POLE, AND SURFACING AS SHOWN.
 - C. INSTALL JUNCTION BOX, CONDUIT, AND PULL STRING FOR CITY FIBER.
 - D. INSTALL BOLLARDS.
 - E. REPLACE SIDEWALK WHERE REMOVED.



EXISTING MONUMENT TYPE A
NTS



EXISTING MONUMENT TYPE B
NTS



| NO. | REVISION | BY | DATE |
|-----|----------|-------|------|
| | | JV | |
| | | CK/TS | |
| | | DB | |

DESIGNED BY: JV
DRAWN BY: CK/TS
CHECKED BY: DB

SCALE: ONE INCH AT FULL SCALE. IF NOT ONE INCH ADJUST SCALE ACCORDINGLY.

PHASING AND DEMOLITION PLAN

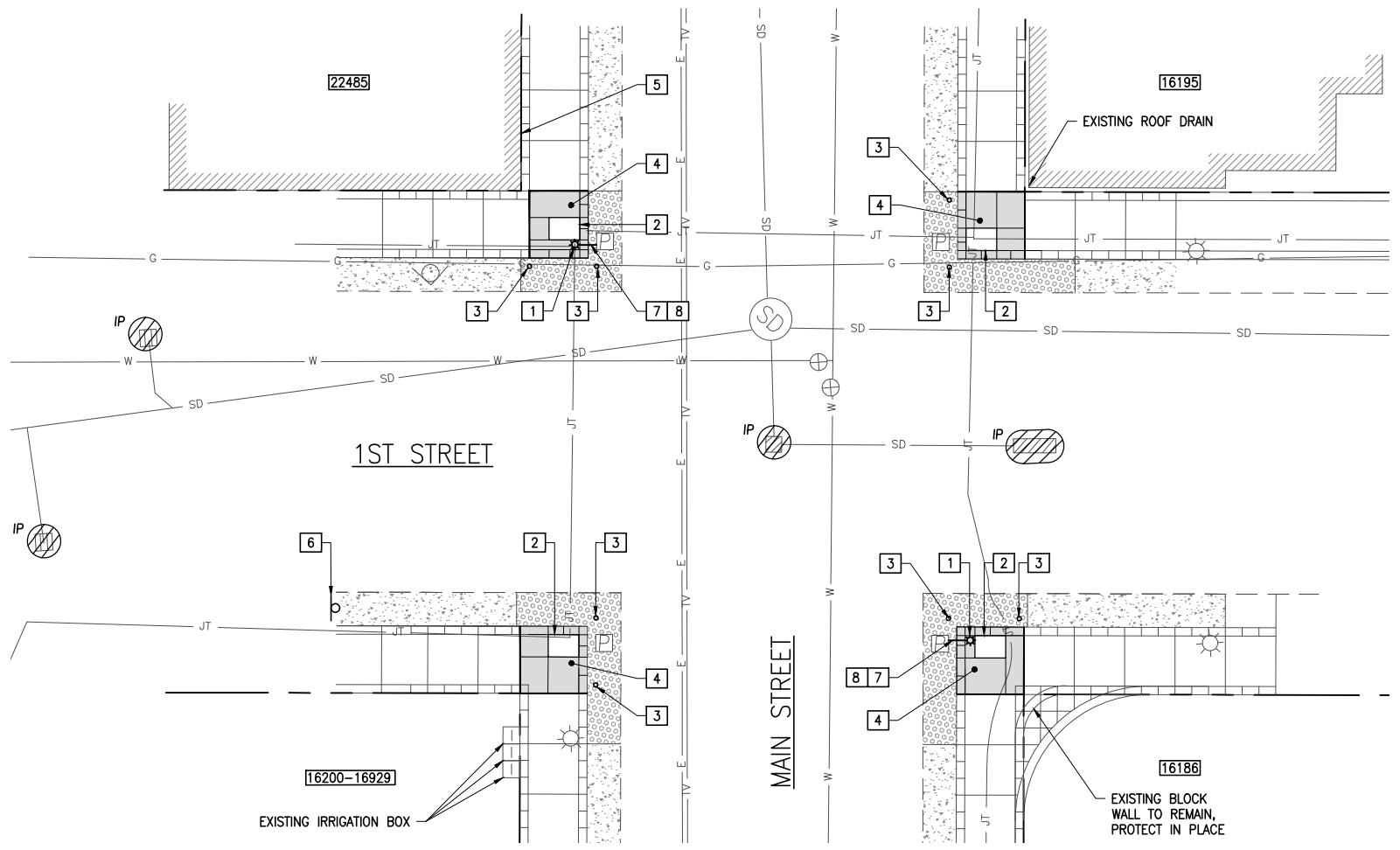
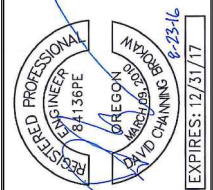
wallis engineering
Vancouver, WA 98663
360.695.7041

PROJECT NO: 1415A
DATE: 08/2016

CITY OF SHERWOOD
DOWNTOWN INTERSECTION
MONUMENT REMOVAL



0 10 20
SCALE IN FEET



PLAN

IMPROVEMENT NOTES:

- 1 COMPLETE EXPLORATORY EXCAVATION TO ENSURE NO CONFLICT BETWEEN PROPOSED LIGHT POLE FOUNDATION AND EXISTING UTILITIES. INSTALL LIGHT POLE FOUNDATION AND LIGHT POLE. SEE DETAILS AND NOTES, SHEET D2.
- 2 INSTALL FIBER OPTIC SPLICE VAULT, CONDUIT, AND PULL STRING PER DETAILS, SHEET D1. SPLICE VAULT TO BE EQUIPPED WITH NON-SLIP LID MEETING REQUIREMENTS OF THE SPECIFICATIONS. COORDINATE WITH CITY PRIOR TO WORK. VERIFY LOCATION OF EXISTING CONDUIT BY EXPLORATORY EXCAVATION PRIOR TO WORK. CONDUIT TO BE ORANGE 4" HDPE. FIBER TO BE INSTALLED BY CITY.
- 3 CONSTRUCT BOLLARD FOUNDATION AND BOLLARD PER DETAIL, SHEET D1.
- 4 CONSTRUCT CEMENT CONCRETE SIDEWALK PER CITY OF SHERWOOD DWG RD-26, SHEET D1. MATCH ADJACENT EXISTING GRADES. SEE SHEET C7 FOR SCORING AND JOINT REQUIREMENTS.
- 5 MAINTAIN ACCESS TO BUSINESS AT ALL TIMES DURING CONSTRUCTION.
- 6 INSTALL SIGN STATING "BUSINESSES OPEN DURING CONSTRUCTION" PRIOR TO BEGINNING WORK, PER SPECIFICATIONS. COORDINATE WITH ENGINEER FOR EXACT LOCATION.
- 7 REUSE EXISTING 1" CONDUIT BETWEEN JUNCTION BOX AND REMOVED MONUMENT FOR ELECTRICAL CONNECTION BETWEEN JUNCTION BOX AND NEW LIGHT POLE. IF CONDUIT IS NOT SALVAGEABLE, BORE OR PUSH NEW 1" SCH 40 PVC CONDUIT BETWEEN POLE AND BOX. IF TRUNCATED DOME PAVERS ARE DISTURBED, REMOVE AND REPLACE WITH PAVERS FROM CITY PUBLIC WORKS.
- 8 INSTALL (3) #8 TYPE THWN WIRES WITHIN 1" SCH 40 PVC CONDUIT BETWEEN LIGHT POLE AND JUNCTION BOX. SPLICE NEW WIRING TO EXISTING ILLUMINATION CIRCUIT WITHIN JUNCTION BOX.

| NO. | REVISION | BY | DATE |
|-----|----------|----|------|
| | | | |
| | | | |
| | | | |
| | | | |

DESIGNED BY: JY
DRAWN BY: CK/TS
CHECKED BY: DB

ONE INCH AT FULL SCALE.
IF NOT ONE INCH ADJUST SCALE ACCORDINGLY

**1ST AND MAIN STREET
PLAN**

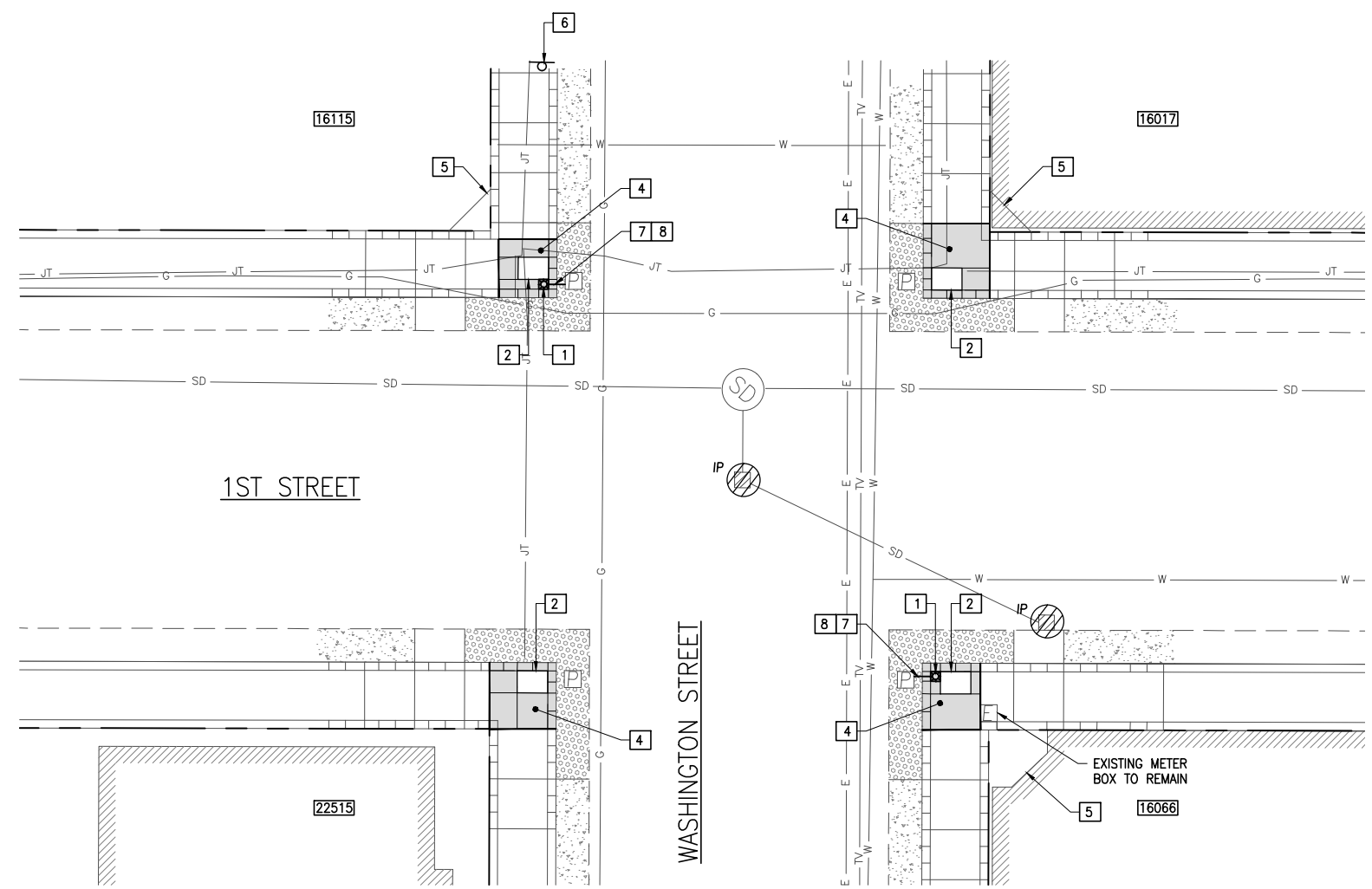
wallis engineering
Vancouver, WA 98602
360.695.7041

PROJECT NO: 1415A
DATE: 08/2016

**CITY OF SHERWOOD
DOWNTOWN INTERSECTION
MONUMENT REMOVAL**



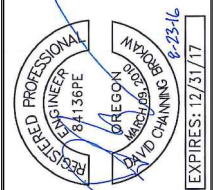
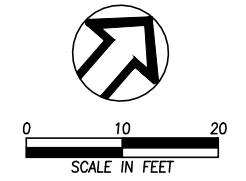
DRAWING NO:
C4
4 OF 10



PLAN

IMPROVEMENT NOTES:

- 1 COMPLETE EXPLORATORY EXCAVATION TO ENSURE NO CONFLICT BETWEEN PROPOSED LIGHT POLE FOUNDATION AND EXISTING UTILITIES. INSTALL LIGHT POLE FOUNDATION AND LIGHT POLE. SEE DETAILS AND NOTES, SHEET D2.
- 2 INSTALL FIBER OPTIC SPLICE VAULT, CONDUIT, AND PULL STRING PER DETAILS, SHEET D1. SPLICE VAULT TO BE EQUIPPED WITH NON-SLIP LID MEETING REQUIREMENTS OF THE SPECIFICATIONS. COORDINATE WITH CITY PRIOR TO WORK. VERIFY LOCATION OF EXISTING CONDUIT BY EXPLORATORY EXCAVATION PRIOR TO WORK. CONDUIT TO BE ORANGE 4" HDPE. FIBER TO BE INSTALLED BY CITY.
- 3 NOT USED
- 4 CONSTRUCT CEMENT CONCRETE SIDEWALK PER CITY OF SHERWOOD DWG RD-26, SHEET D1. MATCH ADJACENT EXISTING GRADES. SEE SHEET C7 FOR SCORING AND JOINT REQUIREMENTS.
- 5 MAINTAIN ACCESS TO BUSINESS AT ALL TIMES DURING CONSTRUCTION.
- 6 INSTALL SIGN STATING "BUSINESSES OPEN DURING CONSTRUCTION" PRIOR TO BEGINNING WORK, PER SPECIFICATIONS. COORDINATE WITH ENGINEER FOR EXACT LOCATION.
- 7 REUSE EXISTING 1" CONDUIT BETWEEN JUNCTION BOX AND REMOVED MONUMENT FOR ELECTRICAL CONNECTION BETWEEN JUNCTION BOX AND NEW LIGHT POLE. IF CONDUIT IS NOT SALVAGEABLE, BORE OR PUSH NEW 1" SCH 40 PVC CONDUIT BETWEEN POLE AND BOX. IF TRUNCATED DOME PAVERS ARE DISTURBED, REMOVE AND REPLACE WITH PAVERS FROM CITY PUBLIC WORKS.
- 8 INSTALL (3) #8 TYPE THWN WIRES WITHIN 1" SCH 40 PVC CONDUIT BETWEEN LIGHT POLE AND JUNCTION BOX. SPLICE NEW WIRING TO EXISTING ILLUMINATION CIRCUIT WITHIN JUNCTION BOX.



| NO. | REVISION | BY | DATE |
|-----|----------|-------|------|
| | | JV | |
| | | CK/TS | |
| | | DB | |

DESIGNED BY: JV
 DRAWN BY: CK/TS
 CHECKED BY: DB

ONE INCH AT FULL SCALE.
 IF NOT ONE INCH ADJUST SCALE ACCORDINGLY

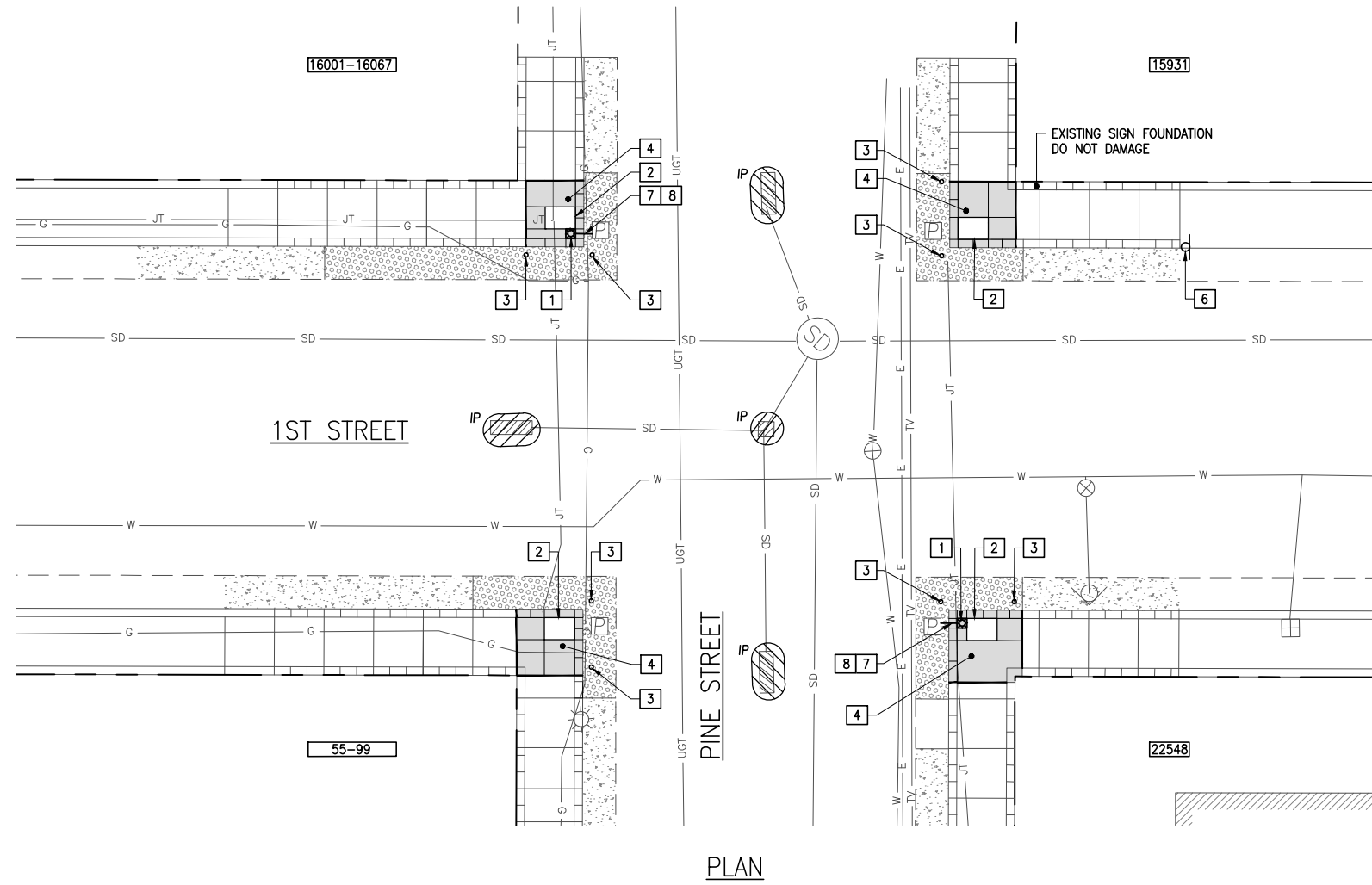
1ST AND WASHINGTON STREET PLAN

wallis engineering
 380 695-7041
 Vancouver, WA 98602

PROJECT NO: 1415A
 DATE: 08/2016

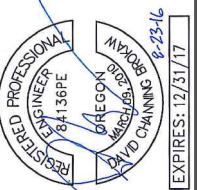
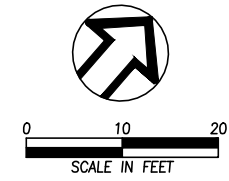
CITY OF SHERWOOD
 DOWNTOWN INTERSECTION
 MONUMENT REMOVAL





IMPROVEMENT NOTES:

- 1 COMPLETE EXPLORATORY EXCAVATION TO ENSURE NO CONFLICT BETWEEN PROPOSED LIGHT POLE FOUNDATION AND EXISTING UTILITIES. INSTALL LIGHT POLE FOUNDATION AND LIGHT POLE. SEE DETAILS AND NOTES, SHEET D2.
- 2 INSTALL FIBER OPTIC SPLICE VAULT, CONDUIT, AND PULL STRING PER DETAILS, SHEET D1. SPLICE VAULT TO BE EQUIPPED WITH NON-SLIP LID MEETING REQUIREMENTS OF THE SPECIFICATIONS. COORDINATE WITH CITY PRIOR TO WORK. VERIFY LOCATION OF EXISTING CONDUIT BY EXPLORATORY EXCAVATION PRIOR TO WORK. CONDUIT TO BE ORANGE 4" HDPE. FIBER TO BE INSTALLED BY CITY.
- 3 CONSTRUCT BOLLARD FOUNDATION AND BOLLARD PER DETAIL, SHEET D1.
- 4 CONSTRUCT CEMENT CONCRETE SIDEWALK PER CITY OF SHERWOOD DWG RD-26, SHEET D1. MATCH ADJACENT EXISTING GRADES. SEE SHEET C7 FOR SCORING AND JOINT REQUIREMENTS.
- 5 MAINTAIN ACCESS TO BUSINESS AT ALL TIMES DURING CONSTRUCTION.
- 6 INSTALL SIGN STATING "BUSINESSES OPEN DURING CONSTRUCTION" PRIOR TO BEGINNING WORK, PER SPECIFICATIONS. COORDINATE WITH ENGINEER FOR EXACT LOCATION.
- 7 REUSE EXISTING 1" CONDUIT BETWEEN JUNCTION BOX AND REMOVED MONUMENT FOR ELECTRICAL CONNECTION BETWEEN JUNCTION BOX AND NEW LIGHT POLE. IF CONDUIT IS NOT SALVAGEABLE, BORE OR PUSH NEW 1" SCH 40 PVC CONDUIT BETWEEN POLE AND BOX. IF TRUNCATED DOME PAVERS ARE DISTURBED, REMOVE AND REPLACE WITH PAVERS FROM CITY PUBLIC WORKS.
- 8 INSTALL (3) #8 TYPE THWN WIRES WITHIN 1" SCH 40 PVC CONDUIT BETWEEN LIGHT POLE AND JUNCTION BOX. SPLICE NEW WIRING TO EXISTING ILLUMINATION CIRCUIT WITHIN JUNCTION BOX.



| NO. | REVISION | BY | DATE |
|-----|----------|----|------|
| | | | |
| | | | |
| | | | |
| | | | |

DESIGNED BY: JV
 DRAWN BY: CK/TS
 CHECKED BY: DB

ONE INCH AT FULL SCALE.
 IF NOT ONE INCH ADJUST SCALE ACCORDINGLY

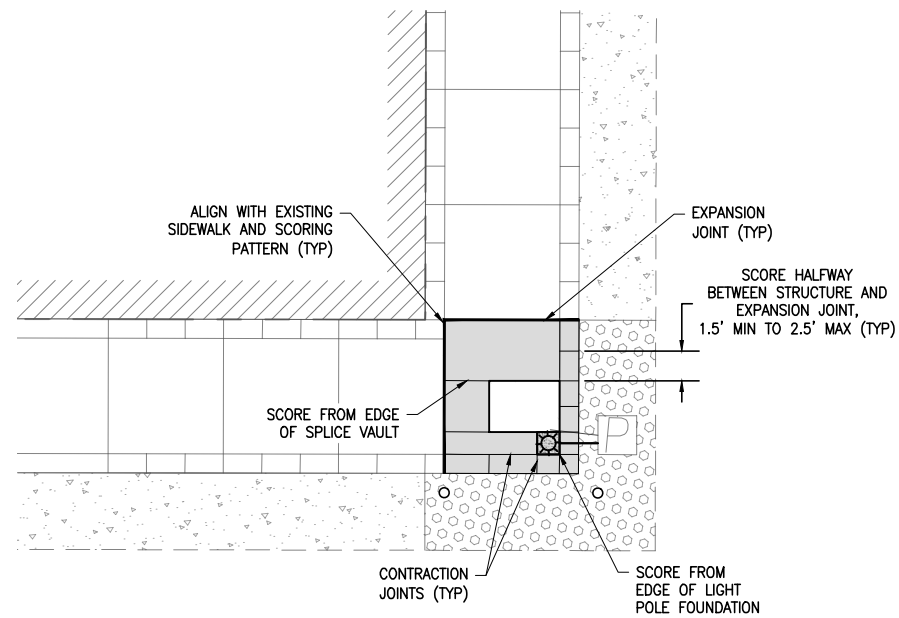
**1ST AND PINE STREET
 PLAN**

wallis engineering
 Wallis Engineering, Inc.
 Vancouver, WA 98602
 360.695.7041

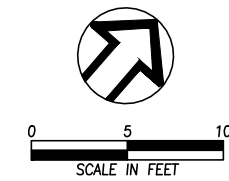
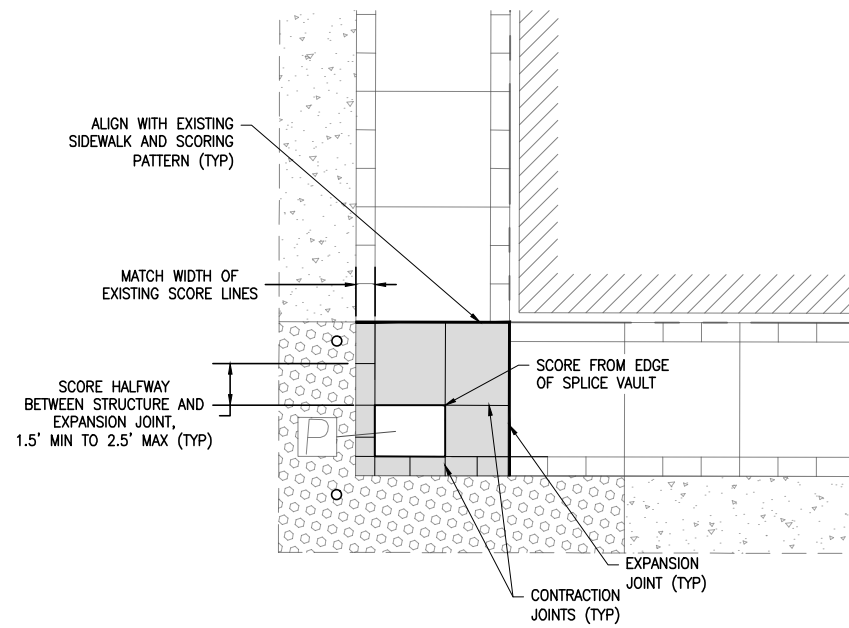
PROJECT NO: 1415A
 DATE: 08/2016

**CITY OF SHERWOOD
 DOWNTOWN INTERSECTION
 MONUMENT REMOVAL**

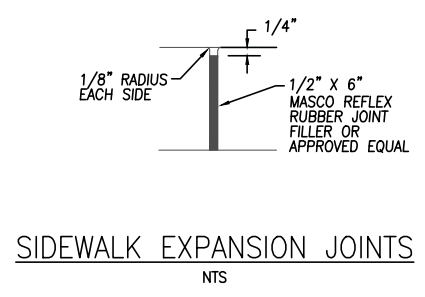




1ST STREET

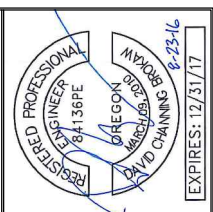
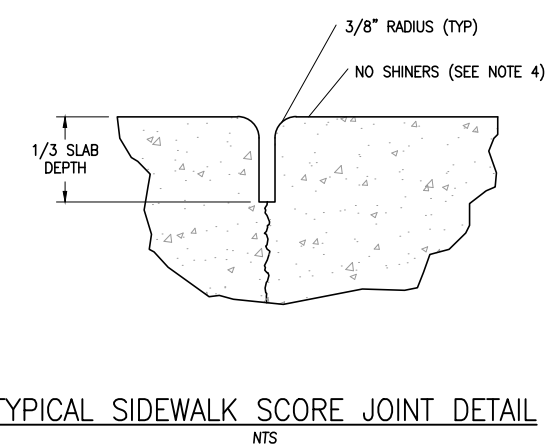


TYPICAL SCORING PLAN



SCORING GENERAL NOTES:

1. SCORING DIMENSIONS SHALL BE AS SHOWN ON THE PLANS OR TO MATCH EXISTING SCORING PATTERNS ONSITE. SCORING SHALL BE ADJUSTED TO MATCH EXISTING SCORING BREAKS.
2. ALL SCORING TO BE LAID OUT AND APPROVED BY ENGINEER PRIOR TO POURING CONCRETE SIDEWALK.
3. FINISH SURFACE TO MATCH QUALITY OF ADJACENT SIDEWALK SURFACE.
4. ALL SIDEWALK SHALL HAVE A MEDIUM BROOM FINISH PERPENDICULAR TO THE LINE OF TRAVEL.
5. DO NOT SHINE JOINTS UNLESS MATCHING EXISTING SIDEWALK WITH SHINED JOINTS.
6. PROVIDE TOOLED EDGE AROUND ALL STRUCTURES.



| NO. | REVISION | BY | DATE |
|-----|----------|-------|------|
| | | JV | |
| | | CK/TS | |
| | | DB | |

DESIGNED BY: JV
DRAWN BY: CK/TS
CHECKED BY: DB

ONE INCH AT FULL SCALE.
IF NOT ONE INCH ADJUST SCALE ACCORDINGLY

SCORING PLAN

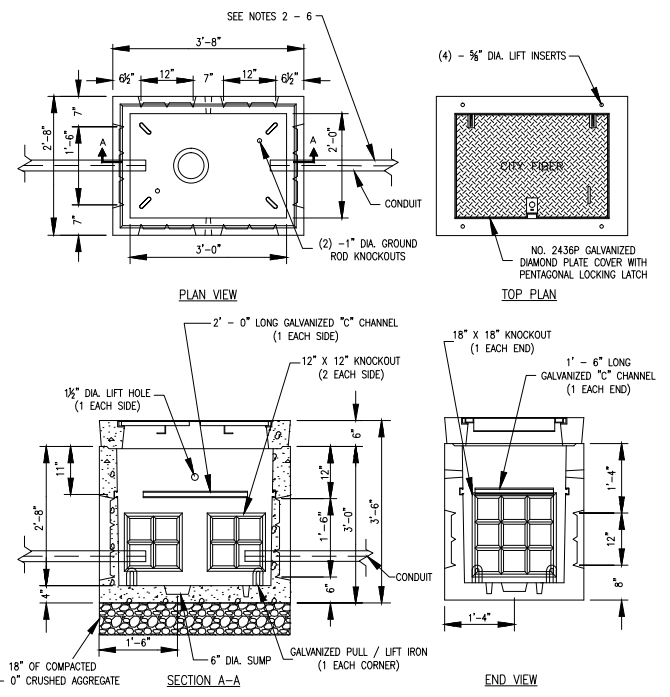
wallis engineering
Vancouver, WA 98602
360.695.7041

PROJECT NO: 1415A
DATE: 08/2016

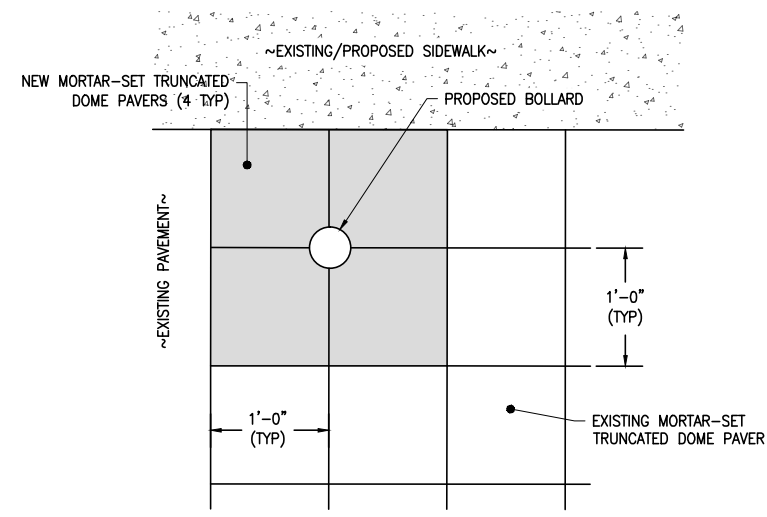
CITY OF SHERWOOD
DOWNTOWN INTERSECTION
MONUMENT REMOVAL



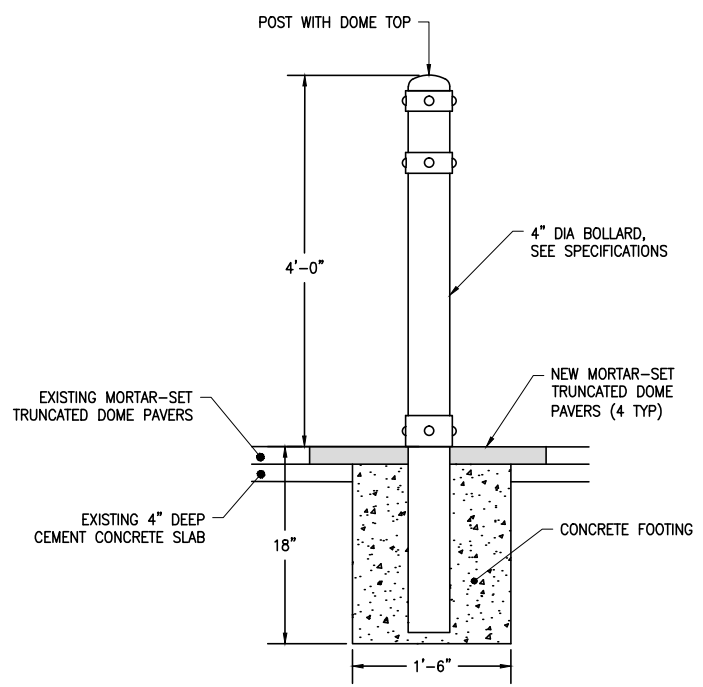
- FIBER OPTIC CONDUIT TO BE HDPE (ORANGE)
- CONDUIT DIAMETER TO BE 2" UNLESS OTHERWISE SPECIFIED
- TRACER WIRE TO BE #10 AWG COPPER WIRE AND WRAPPED AROUND CONDUIT.
- FIBER OPTIC JUNCTION BOX TO BE:
MANUFACTURER: ARMORCAST
NUMBER: A6001640HDAPCX24 (TRAFFIC RATED)
NUMBER: A6001640APCX24 (NON-TRAFFIC RATED)
(UNLESS OTHERWISE SPECIFIED OR APPROVED)
- FIBER OPTIC SPLICE VAULT TO BE:
MANUFACTURER: OLDCASTLE PRECAST UTILITY VAULT
NUMBER: 233-LA
(UNLESS OTHERWISE SPECIFIED OR APPROVED)
- ADVANCED WARNING MARKER TAPE TO BE 3" OR 6" VINYL
(UNLESS OTHERWISE SPECIFIED)
- PULL STRING TO BE INSTALLED IN ALL CONDUIT
- FIBER OPTIC CABLE TO BE INSTALLED BY OTHERS
- 2" CITY FIBER CONDUIT SHALL BE INSTALLED ALONG STREET FRONTAGE IN THE PUBLIC UTILITY EASEMENT (IF AVAILABLE) OR WITHIN STREET RIGHT-OF-WAY FOR ALL RESIDENTIAL AND COMMERCIAL CONSTRUCTION PROJECTS.



- NOTES:
- FIBER SPLICE VAULT SHALL BE OLDCASTLE PRECAST UTILITY VAULT #233-LA (UNLESS OTHERWISE APPROVED OR SPECIFIED).
 - SEE STANDARD SPECIFICATIONS FOR CONDUIT DEPTH, SIZE AND TYPE. 2" ORANGE HDPE TYPICAL.
 - PULL STRING AND #10 AWG TRACER WIRE TO BE INSTALLED BY CONTRACTOR. PULL STRING AND TRACER WIRE TO BE WRAPPED AND DUCT TAPED TO SIDE WALL OF VAULT.
 - SPLICE VAULT TO BE INSTALLED ON 18" MIN. LAYER OF COMPACTED 3/4" - 0" CRUSHED ROCK.
 - GROUT CONDUIT ACCESS HOLES WITH NON-SHRINK GROUT.
 - FIBER OPTIC CABLE BY OTHERS



PLAN VIEW



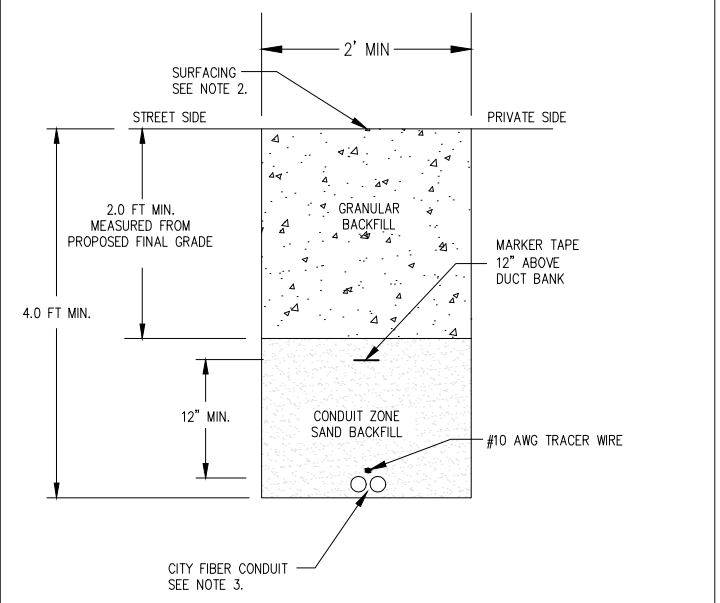
ELEVATION VIEW

BOLLARD DETAIL
NTS

- NOTES:
- REMOVE TRUNCATED DOME PAVERS AND UNDERLYING MORTAR WITH CARE - DO NOT DAMAGE OR NICK ADJACENT SURFACES. CORE THROUGH THE UNDERLYING CONCRETE SLAB WITH EQUIPMENT CAPABLE OF CORING A CIRCULAR HOLE IN THE PAVEMENT, OF A DIAMETER EQUAL TO THE DIAMETER OF THE BOLLARD FOUNDATION.
 - CONSTRUCT CONCRETE FOOTING WITH COMMERCIAL CEMENT CONCRETE PER THE SPECIFICATIONS. FOUNDATION TO MATCH TOP OF ADJACENT EXISTING CEMENT CONCRETE SLAB, AND LEAVE ADEQUATE DEPTH FOR INSTALLING MORTAR-SET PAVERS.
 - CORE DRILL CORNERS OF (4) TRUNCATED DOME PAVERS TO FIT AROUND BOLLARD BASE. MORTAR-SET PAVERS AROUND BOLLARD BASE, FLUSH TO ADJACENT SURFACES. NEW PAVERS TO BE FURNISHED BY THE CITY.

| STANDARD DRAWING TITLE | DRAWING NUMBER |
|--------------------------|----------------|
| CITY FIBER GENERAL NOTES | FO-1 |
| SCALE | DATE |
| N.T.S. | MAR '16 |

| STANDARD DRAWING TITLE | DRAWING NUMBER |
|-------------------------|----------------|
| CITY FIBER SPLICE VAULT | FO-5 |
| SCALE | DATE |
| N.T.S. | MAR '16 |

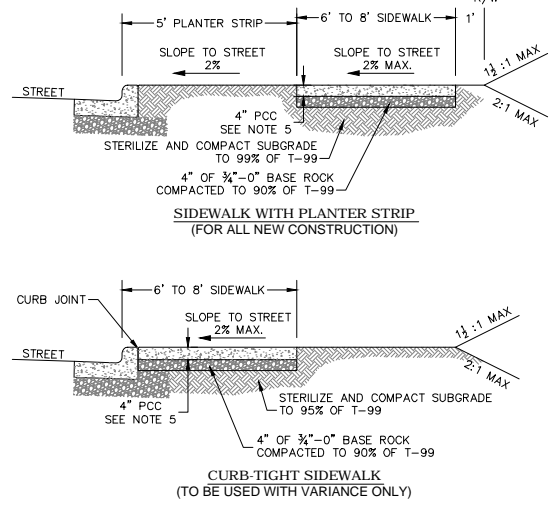


CITY FIBER OPTIC TRENCH

TYPICAL SECTION (N.T.S.)

THIS SECTION IS SCHEMATIC AND FOR INFORMATIONAL PURPOSES.

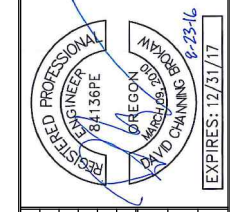
- NOTES:
- UTILITIES IN JOINT TRENCH VARY BY PROJECT. SEE PLANS FOR LOCATIONS AND SIZES OF CONDUIT FOR EACH UTILITY.
 - SURFACING OF PAVED AREAS SHALL COMPLY WITH STANDARD DETAIL RD-45
 - CONDUIT TO BE 2". CONDUIT TO BE HDPE (ORANGE).
 - USE SPACERS TO MAINTAIN CONDUIT SPACING IN COMMON TRENCH.



- NOTES:
- CONCRETE SHALL BE COMMERCIAL MIX, MIN. COMPRESSIVE STRENGTH OF 3,300 PSI @ 28 DAYS, WITH A 4" MAX SLUMP.
 - SIDEWALK PANELS TO BE SQUARE (6' LONG x 6' WIDE TYP).
 - EXPANSION JOINTS TO BE PLACED AT SIDES OF DRIVEWAY APPROACHES, UTILITY VAULTS, CURB RAMPS, AND/OR POINTS OF TANGENCY IN CURB AS SHOWN ON THE STANDARD DRAWINGS FOR SIDEWALK RAMPS, AND AT SPACING NOT TO EXCEED 45'.
 - FOR SIDEWALKS ADJACENT TO THE CURB AND POURED AT THE SAME TIME AS THE CURB, THE JOINT BETWEEN THEM SHALL BE A TROWELED JOINT WITH A MINIMUM 3/4" RADIUS.
 - SIDEWALKS SHALL HAVE A MINIMUM THICKNESS OF 4". IF MOUNTABLE CURB IS USED, OR IF SIDEWALK IS INTENDED AS PORTION OF A RESIDENTIAL DRIVEWAY IT SHALL HAVE A 6" MINIMUM THICKNESS, COMMERCIAL 8".
 - CONCRETE SHALL HAVE A BROOM FINISH, ALL JOINTS SHALL BE EDGED WITH 3" SHINE.
 - WIDTH OF PLANTER STRIP AND SIDEWALK IS MEASURED FROM FACE OF CURB.
 - IF DRAIN BLOCKOUTS IN CURBS ARE APPROVED, THEY SHALL BE EXTENDED PERPENDICULAR TO CURB TO 1' PAST BACK OF SIDEWALK WITH A 3" DIAMETER ADS PIPE. CONTRACTION JOINT SHALL BE PLACE OVER PIPE.

| STANDARD DRAWING TITLE | DRAWING NUMBER |
|--------------------------|----------------|
| CITY FIBER TRENCH DETAIL | FO-3 |
| SCALE | DATE |
| N.T.S. | MAR '16 |

| STANDARD DRAWING TITLE | DRAWING NUMBER |
|------------------------|----------------|
| SIDEWALK DETAIL | RD-26 |
| SCALE | DATE |
| N.T.S. | MAR '16 |



| NO. | REVISION | BY | DATE |
|-----|----------|-------|------|
| | | JV | |
| | | CK/TS | |
| | | DB | |

DESIGNED BY: JV
DRAWN BY: CK/TS
CHECKED BY: DB

SCALE: ONE INCH AT FULL SCALE. IF NOT ONE INCH ADJUST SCALE ACCORDINGLY.

CITY OF SHERWOOD
DETAILS

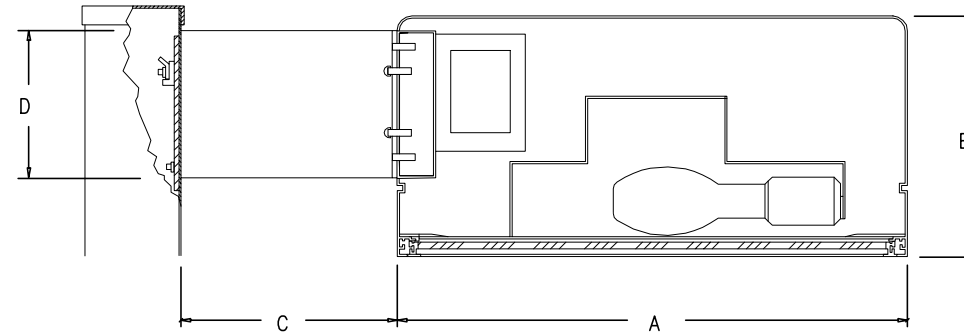
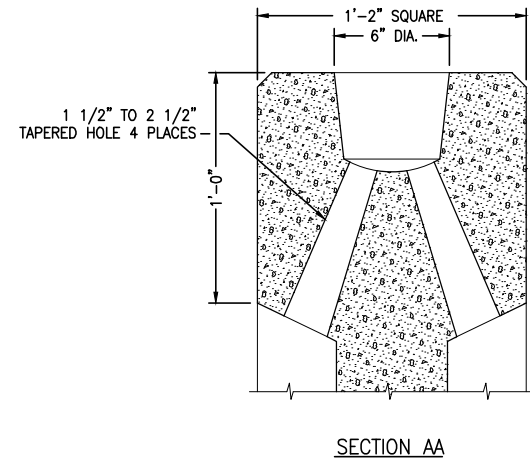
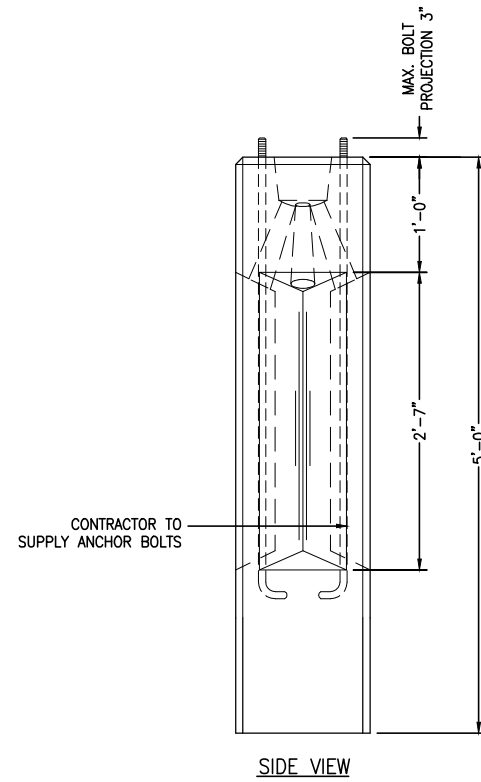
wallis engineering
PROJECT NO: 1415A
DATE: 08/2016

CITY OF SHERWOOD
DOWNTOWN INTERSECTION
MONUMENT REMOVAL



DRAWING NO:

D1

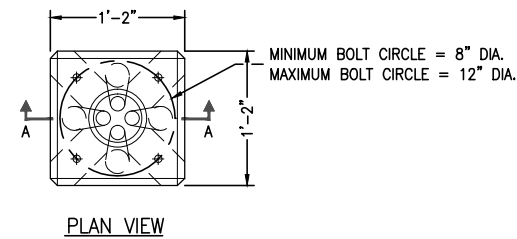
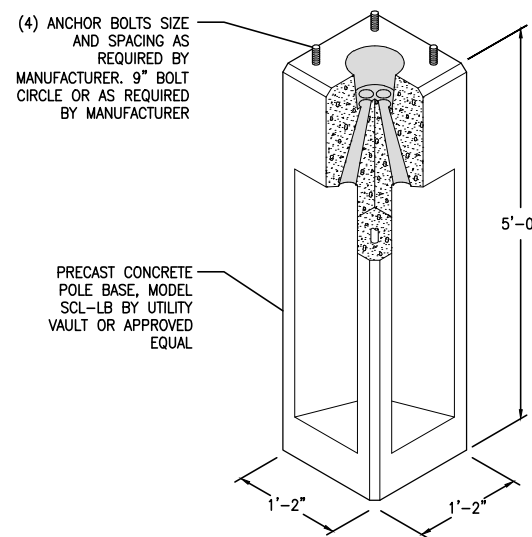


| SIZE | A | B | C | D | EPA'S | | | SINGLE WEIGHT |
|------|-----|----|----|----|--------|-------|------|---------------|
| | | | | | SINGLE | TWIN* | QUAD | |
| 17" | 17" | 8" | 5" | 5" | .7 | 1.5 | 2.1 | 27 LBS |

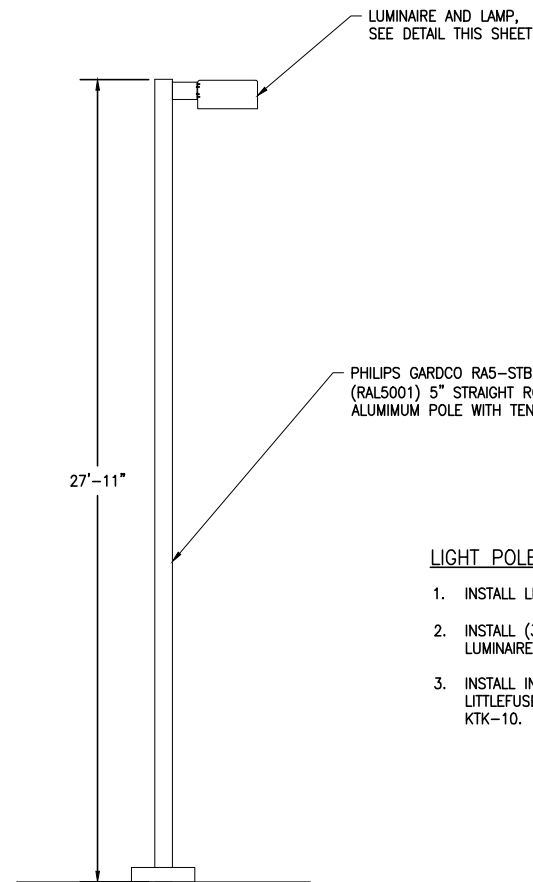
*TWIN AT 180°

- GENERAL NOTES:
- LUMINAIRE TO BE PHILIPS GARDCO CA-17-1-3-150MH-120-OC(RAL5001)
 - LAMP TO BE (1) OSRAM SYLVANIA MCP150/C/U/MED/830

LUMINAIRE AND LAMP DETAIL
NTS

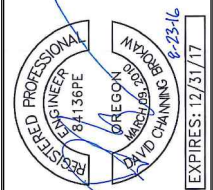


PRECAST CONCRETE LIGHT POLE FOUNDATION
NTS



- LIGHT POLE INSTALLATION NOTES:
- INSTALL LIGHT POLES WHERE SHOWN ON THE PLAN SHEETS.
 - INSTALL (3) #10 TYPE THWN WIRES BETWEEN POLE BASE AND LUMINAIRE.
 - INSTALL IN-LINE WATER TIGHT BREAKAWAY FUSE HOLDER. LITTLEFUSE LEX-JJ-S AND COPPER BUSSMAN FUSE LIMITRON KTK-10.

LIGHT POLE DETAIL
NTS



| NO. | REVISION | BY | DATE |
|-----|----------|-------|------|
| | | JV | |
| | | CK/TS | |
| | | DB | |

DESIGNED BY: JV
DRAWN BY: CK/TS
CHECKED BY: DB

SCALE: ONE INCH AT FULL SCALE. IF NOT ONE INCH ADJUST SCALE ACCORDINGLY.

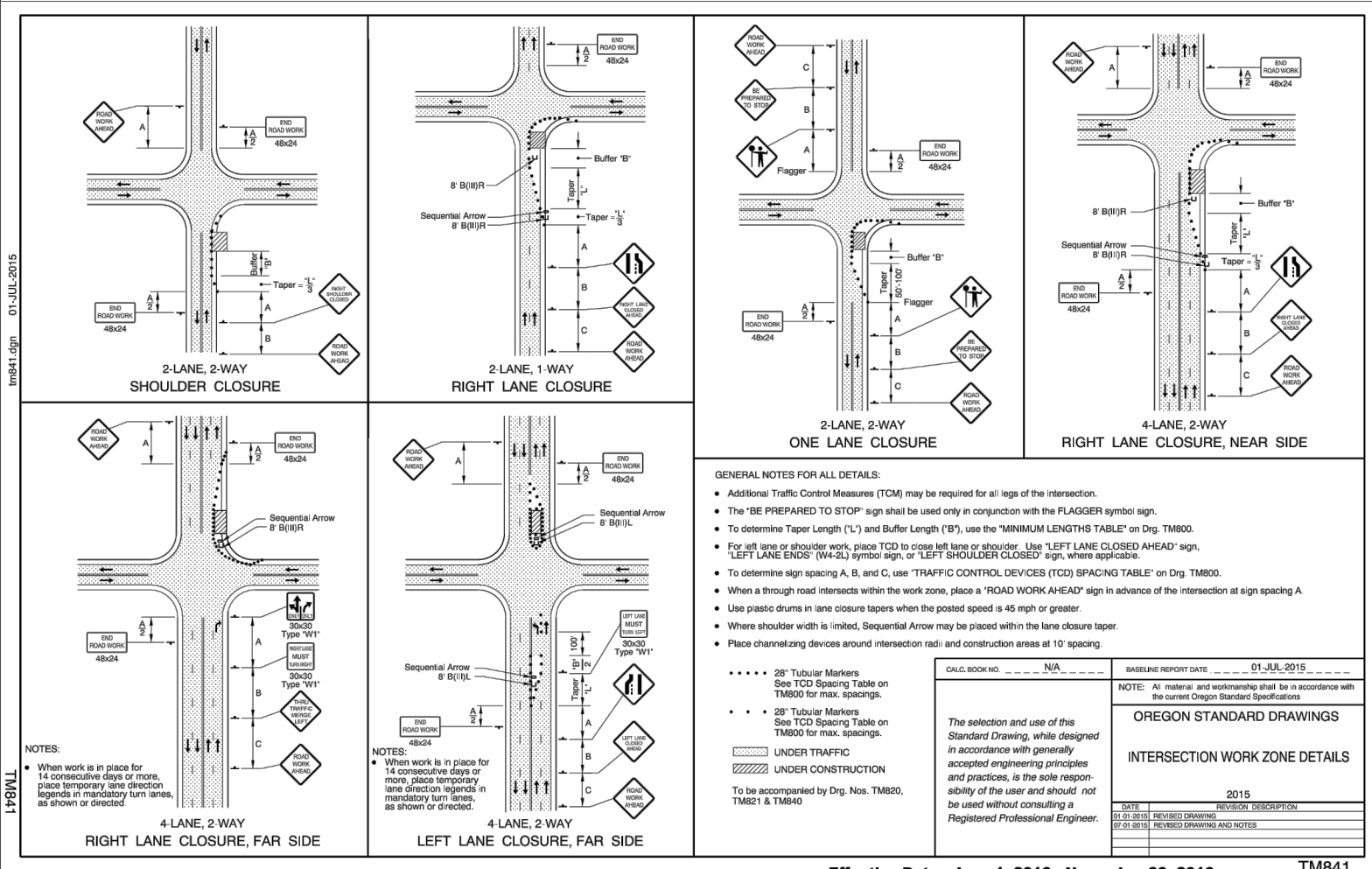
ILLUMINATION DETAILS

wallis engineering
Vancouver, WA 98602
360.695.7041

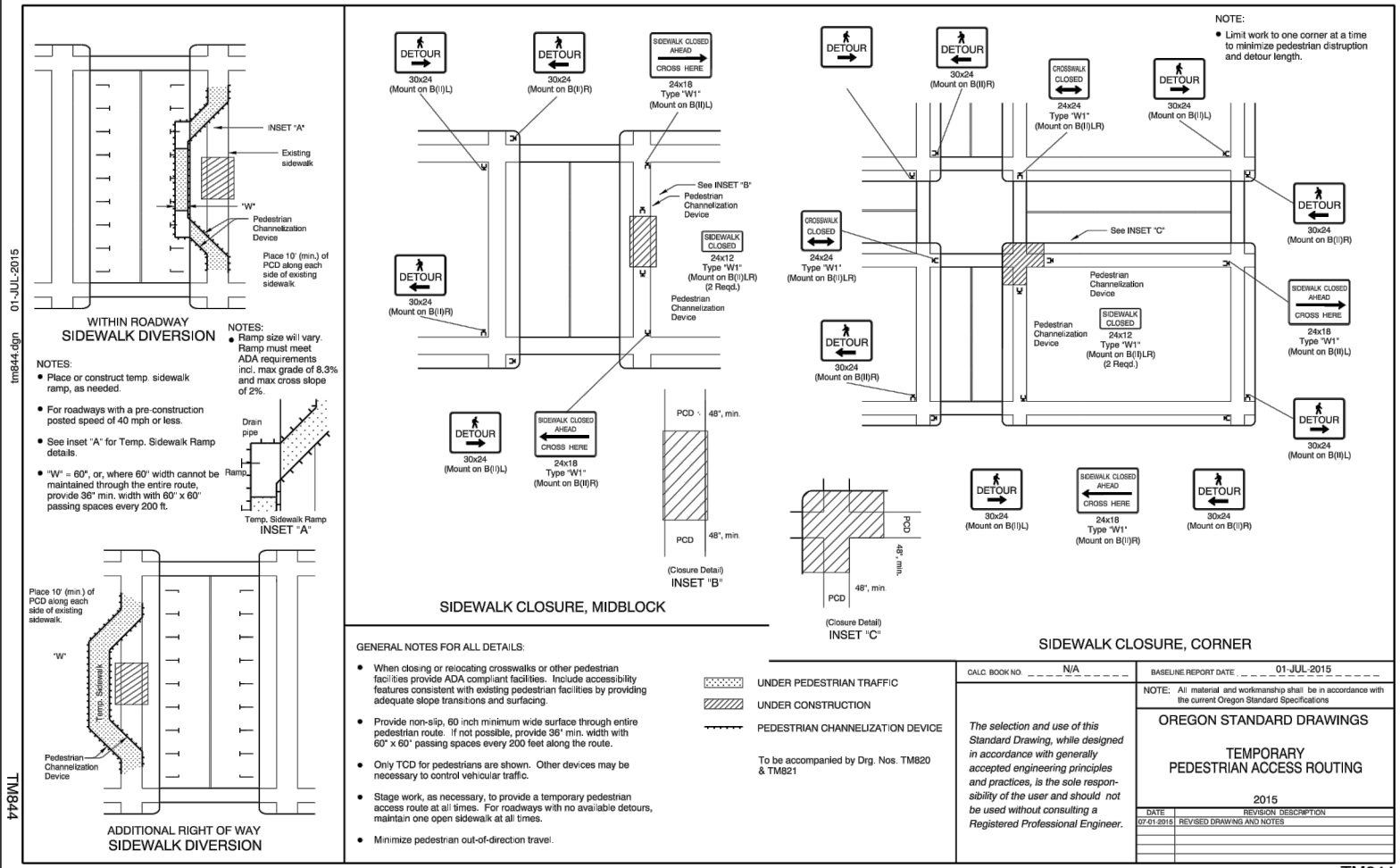
PROJECT NO: 1415A
DATE: 08/2016

CITY OF SHERWOOD
DOWNTOWN INTERSECTION
MONUMENT REMOVAL

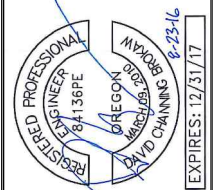




Effective Date: June 1, 2016 - November 30, 2016 TM841



Effective Date: June 1, 2016 - November 30, 2016 TM844



| NO. | REVISION | BY | DATE |
|-----|----------|-------|------|
| | | JV | |
| | | CK/TS | |
| | | DB | |

DESIGNED BY: JV
 DRAWN BY: CK/TS
 CHECKED BY: DB

SCALE: ONE INCH AT FULL SCALE. IF NOT ONE INCH ADJUST SCALE ACCORDINGLY.

ODOT STANDARD DETAILS

wallis engineering
 Vancouver, WA 98603
 360.695.7041

PROJECT NO: 1415A
 DATE: 08/2016

CITY OF SHERWOOD
 DOWNTOWN INTERSECTION
 MONUMENT REMOVAL



DRAWING NO: D3
 10 OF 10