



Sunset, Meinecke, and Timbrel Grind and Inlay

DATE May 8, 2024

ADDENDUM NO. 1

Addition/Change to the Contract Documents

The work provided for in this addendum shall become a part of the drawings and specifications for this project.

1. On the Bid Schedule, Level 3, ½-Inch ACP has been added under. Quantities are 120 tons for Sunset (page 1, part 15), and 10 tons for Timbrel (page 4, part 15).
2. On page 31 of the Special Provisions, under Subsection 745.90 Payment, pay item "Level 3, ½-Inch ACP" has been added.
3. Note that key notes T4, TS, T6 on sheets 3 and 4, and the detail "Typical Street Reconstruction Section" on sheet 3, have been updated to exclude Fiber Mix for all trench and sidewalk ramp full-depth asphalt repair/replacement (excludes final overlay).
4. Note that key note T3 on sheet 6 and the detail "Typical Street Reconstruction Section" have been updated to exclude Fiber Mix for all trench and sidewalk ramp full-depth asphalt repair/replacement (excludes final overlay).

This ADDENDUM shall be signed and attached to the Bidder's Proposal and shall subsequently become part of the Contract Documents.

Company Name	
Contractor Name	
Contractor Signature	
Date	

ADDENDUM #1- PAGE REISSUE

City of Sherwood
 Sunset, Meinecke, and Timbrel Grind and Inlay
 Division One – Bidding Requirements

BID SCHEDULE SUNSET CURB RAMPS, GRIND AND INLAY, GAS ALTERNATE

Item No.	Spec Section	Description	Unit	Quantity	Unit Price	Unit Total Cost
PART 00200 -- TEMPORARY FEATURES AND APPURTENANCES						
1	00210	Mobilization	LS	1		
2	00221	Temporary Work Zone Traffic Control, Complete	LS	1		
3	00280	Erosion Control	LS	1		
PART 00300 – ROADWORK						
4	00305	Construction Survey Work	LS	1		
5	00310	Removal of Structures and Obstructions	LS	1		
6	00310	Removal of Asphalt, Full Depth	SY	100		
7	00310	Removal of Asphalt, Partial Depth	SY	475		
8	00310	Removal of Concrete Curb and Gutter	FT	193		
9	00310	Removal of Concrete Curb	FT	8		
10	00310	Removal of Concrete Sidewalk	SY	153		
11	00320	Clearing and Grubbing	LS	1		
12	00330	General Excavation	CY	120		
PART 00400 -- DRAINAGE AND SEWERS						
13	00490	Adjusting Boxes	EA	15		
PART 00600 - BASES						
14	00620	Cold Plane Removal, 1-1/2" Deep	SY	7041		
15	00641	3/4"-0" Aggregate Base	TN	224		
PART 00700 – WEARING SURFACES						
16	00745	Level 3, 1/2-Inch ACP	TN	120		
17	00745	Level 3, 1/2-Inch ACP, Fiber Mix	TN	709		
18	00759	Concrete Curb and Gutter	FT	193		
19	00759	Concrete Sidewalk	SF	1374		
20	00759	Truncated Domes on New Surfaces	SF	90		
PART 00800 – PERMANENT TRAFFIC SAFETY AND GUIDANCE DEVICES						
21	00865	Thermoplastic, Extruded or Sprayed, Surface, Non-Profiled, 4-Inch, Yellow	FT	2690		
22	00865	Thermoplastic, Extruded or Sprayed, Surface, Non-Profiled, 4-Inch, White	FT	165		
23	00865	Thermoplastic, Extruded or Sprayed, Surface, Non-Profiled, 8-Inch, White	FT	155		
24	00867	Pavement Bar, Type AB	SF	280		

ADDENDUM #1- PAGE REISSUE

City of Sherwood
 Sunset, Meinecke, and Timbrel Grind and Inlay
 Division One – Bidding Requirements

BID SCHEDULE SUNSET CURB RAMPS, GRIND AND INLAY, GAS ALTERNATE

Item No.	Spec Section	Description	Unit	Quantity	Unit Price	Unit Total Cost
25	00867	Pavement Legend, Type AB, Arrows	EA	9		
26	00867	Pavement Legend, Type AB, "X-ING"	EA	1		
27	00867	Pavement Legend, Type AB, "ONLY"	EA	1		
28	00867	Pavement Legend, Type AB, "SCHOOL"	EA	1		
PART 01000 – RIGHT OF WAY DEVELOPMENT AND CONTROL						
29	01030	Yard Restoration	LS	1		
TOTAL BID						

BID WRITTEN IN WORDS:

_____ DOLLARS AND _____ CENTS

In the event of discrepancy, the amount in words shall dictate.

In accordance with the provisions of the Oregon Standard Specifications for Construction, 2021 Edition as modified by these bid documents, the undersigned Bidder submits the following Bid Schedule with the understanding that City reserves the right to increase, decrease, or completely eliminate quantities as set forth in 00120.20. Also, the Bidder offers to do the work, whether quantities area changed (increased or decreased) in accordance with 00195.20, or not changed, at the unit rate price stated in the following Bid Schedule:

 Signature of Authorized Agent

 Company Name

 Printed Name

 Date

ADDENDUM #1- PAGE REISSUE

City of Sherwood
 Sunset, Meinecke, and Timbrel Grind and Inlay
 Division One – Bidding Requirements

BID SCHEDULE MEINECKE AND GRIND AND INLAY

Item No.	Spec Section	Description	Unit	Quantity	Unit Price	Unit Total Cost
PART 00200 -- TEMPORARY FEATURES AND APPURTENANCES						
1	00210	Mobilization	LS	1		
2	00221	Temporary Work Zone Traffic Control, Complete	LS	1		
3	00280	Erosion Control	LS	1		
PART 00300 – ROADWORK						
4	00305	Construction Survey Work	LS	1		
5	00310	Removal of Structures and Obstructions	LS	1		
6	00310	Removal and Restoration of Median Section	LS	1		
PART 00400 -- DRAINAGE AND SEWERS						
7	00490	Adjusting Boxes	EA	3		
PART 00600 - BASES						
8	00620	Cold Plane Removal, 1-1/2" Deep	SY	856		
PART 00700 – WEARING SURFACES						
9	00745	Level 3, 1/2-Inch ACP, Fiber Mix Treated	TN	86		
TOTAL BID						

BID WRITTEN IN WORDS:

_____ **DOLLARS AND** _____ **CENTS**

In the event of discrepancy, the amount in words shall dictate.

In accordance with the provisions of the Oregon Standard Specifications for Construction, 2021 Edition as modified by these bid documents, the undersigned Bidder submits the following Bid Schedule with the understanding that City reserves the right to increase, decrease, or completely eliminate quantities as set forth in 00120.20. Also, the Bidder offers to do the work, whether quantities area changed (increased or decreased) in accordance with 00195.20, or not changed, at the unit rate price stated in the following Bid Schedule:

 Signature of Authorized Agent

 Company Name

 Printed Name

 Date

ADDENDUM #1- PAGE REISSUE**BID SCHEDULE
TIMBREL CURB RAMPS AND GRIND AND INLAY**

Item No.	Spec Section	Description	Unit	Quantity	Unit Price	Unit Total Cost
PART 00200 -- TEMPORARY FEATURES AND APPURTENANCES						
1	00210	Mobilization	LS	1		
2	00221	Temporary Work Zone Traffic Control, Complete	LS	1		
3	00280	Erosion Control	LS	1		
PART 00300 -- ROADWORK						
4	00305	Construction Survey Work	LS	1		
5	00310	Removal of Structures and Obstructions	LS	1		
6	00310	Removal of Asphalt, Full Depth	SY	18		
7	00310	Removal of Asphalt, Partial Depth	SY	28		
8	00310	Removal of Concrete Curb and Gutter	FT	54		
9	00310	Removal of Concrete Sidewalk	SY	71		
10	00320	Clearing and Grubbing	LS	1		
11	00330	General Excavation	CY	5		
PART 00400 -- DRAINAGE AND SEWERS						
12	00490	Adjusting Boxes	EA	2		
PART 00600 - BASES						
13	00620	Cold Plane Removal, 1-1/2" Deep	SY	962		
14	00641	3/4"-0" Aggregate Base	TN	10		
PART 00700 -- WEARING SURFACES						
15	00745	Level 3, 1/2-Inch ACP	TN	10		
16	00745	Level 3, 1/2-Inch ACP, Fiber Mix	TN	97		
17	00759	Concrete Curb and Gutter	FT	54		
18	00759	Concrete Sidewalk	SF	639		
19	00759	Truncated Domes on New Surfaces	SF	30		
PART 00800 -- PERMANENT TRAFFIC SAFETY AND GUIDANCE DEVICES						
20	00865	Thermoplastic, Extruded or Sprayed, Surface, Non-Profiled, 4-Inch, Yellow	FT	450		
21	00865	Thermoplastic, Extruded or Sprayed, Surface, Non-Profiled, 12-Inch, White	FT	13		
22	00867	Pavement Bar, Type AB	SF	160		
PART 01000 -- RIGHT OF WAY DEVELOPMENT AND CONTROL						
23	01030	Yard Restoration	LS	1		
TOTAL BID						

ADDENDUM #1- PAGE REISSUE

City of Sherwood
Sunset, Meinecke, and Timbrel Grind and Inlay
Division One – Bidding Requirements

BID WRITTEN IN WORDS:

_____ DOLLARS AND _____ CENTS

The lowest responsive bidder will be determined by the lowest sum of all three project schedules (SW Sunset Boulevard, Meinecke Roundabout, and Timbrel Grind and Inlay).

In the event of discrepancy, the amount in words shall dictate.

In accordance with the provisions of the Oregon Standard Specifications for Construction, 2021 Edition as modified by these bid documents, the undersigned Bidder submits the following Bid Schedule with the understanding that City reserves the right to increase, decrease, or completely eliminate quantities as set forth in 00120.20. Also, the Bidder offers to do the work, whether quantities area changed (increased or decreased) in accordance with 00195.20, or not changed, at the unit rate price stated in the following Bid Schedule:

Signature of Authorized Agent

Company Name

Printed Name

Date

surface to be tacked. Remove all material, loose or otherwise, that will reduce adhesion of the tack by brooming, flushing with water, or other approved methods. Cost of tack coat is incidental.

Add the following bid items to the following subsection:

00745.90 Payment –

Pay Item	Unit of Measurement
(c) Level 3, 1/2-Inch ACP	Ton
(d) Level 3, 1/2-Inch ACP, Fiber Mix Treated	Ton

SECTION 00746 – CRACK SEALING FLEXIBLE PAVEMENTS

Comply with Section 00746 of the Standard Specifications modified as follows:

Add the following text to the following subsection as noted:

0746.00 Scope -

All joints between the new ACP and existing asphalt surface shall be crack sealed with hot rubber asphalt sealant.

Delete the text of the following subsection and replace with the following:

00746.80 Measurement – There will be no measurement of quantities under this Section.

Delete the text of the following subsection and replace with the following:

00746.90 Payment – Crack Sealing is incidental.

SECTION 00759 – MISCELLANEOUS PORTLAND CEMENT CONCRETE STRUCTURES

Comply with Section 00759 of the Standard Specifications modified as follows:

Add the following bid items to the following subsection:

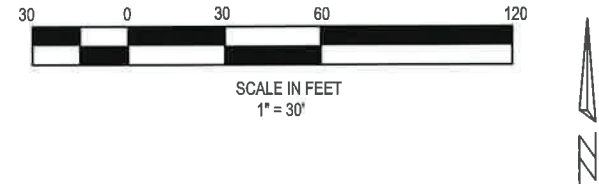
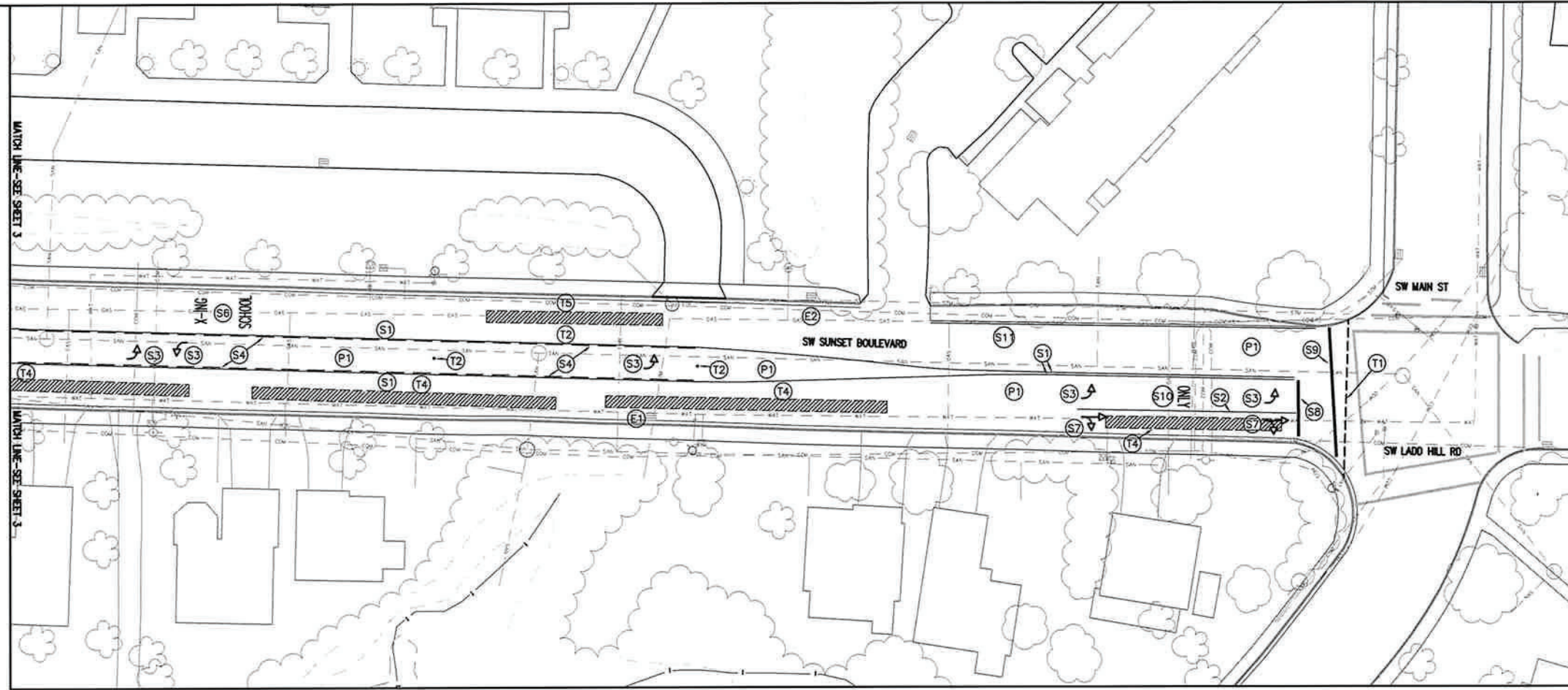
00759.90 Payment –

Pay Item	Unit of Measurement
(l) Concrete Curb and Gutter	Foot
(m) Concrete Curb, Vertical	Foot
(n) Concrete Sidewalk.....	Foot

PART 00800 – PERMANENT TRAFFIC SAFETY AND GUIDANCE DEVICES

SECTION 00865 – LONGITUDINAL PAVEMENT MARKING – DURABLE

Comply with Section 00865 of the Standard Specifications modified as follows:



TIMING NOTES: SIDEWALK RAMP WORK MAY NOT BEGIN UNTIL SCHOOL IS OUT FOR SUMMER (JUNE 17, 2024). GRIND AND INLAY WORK MAY NOT BEGIN UNTIL NW NATURAL HAS COMPLETED PAVEMENT RESTORATION OVER GAS LINE (EXPECTED NW NATURAL START DATE JUNE 17, 2024 WITH APPROXIMATELY 3 WEEKS CONSTRUCTION TIME).

ADDENDUM #1- PAGE REISSUE

⚠ NOTE THAT FIBER MIX WILL NOT BE USED IN TRENCH REPAIR LIFTS OR ASPHALT REPLACEMENT ADJACENT TO SIDEWALK RAMPS (EXCLUDES FINAL OVERLAY)

STREET KEY NOTES

- (T1) SAWCUT FOR GRIND AND INLAY (PARTIAL DEPTH), CONFIRM LOCATION WITH INSPECTOR (INCIDENTAL).
- (T2) BLUE REFLECTIVE MARKERS ON CENTERLINE AT FIRE HYDRANTS BY CITY OF SHERWOOD
- (T3) CAUTION: EXISTING SHALLOW GAS LINE. TO BE REPLACED BY NW NATURAL. GRIND AND INLAY SHALL NOT BE INSTALLED UNTIL NW NATURAL HAS FINISHED TRENCH
- ⚠ (T4) AFTER GRINDING, AS DIRECTED BY ENGINEER, REMOVE REMAINING DEPTH OF ASPHALT TO BASE ROCK TO ALLOW FOR PLACEMENT OF 4" THICKNESS OF LEVEL 3, 1/2-INCH, ACP ~~FIBER MIX~~ IN 2 LIFTS (COMPACT TO 92% OF MMAD PER AASHTO T209) TO MATCH GRINDED ASPHALT SURFACE PRIOR TO 1-1/2" OVERLAY
- ⚠ (T5) AFTER GRINDING, AS DIRECTED BY ENGINEER, REMOVE REMAINING DEPTH OF ASPHALT TO BASE ROCK TO ALLOW FOR PLACEMENT OF 4" THICKNESS OF LEVEL 3, 1/2-INCH, ACP ~~FIBER MIX~~ IN 2 LIFTS (COMPACT TO 92% OF MMAD PER AASHTO T209) TO MATCH GRINDED ASPHALT SURFACE PRIOR TO 1-1/2" OVERLAY. THESE AREAS WILL LIKELY BE COMPLETED BY NW NATURAL AFTER SCHOOL IS OUT FOR SUMMER
- ⚠ (T6) AREA OF FULL DEPTH REMOVAL FOR BLENDING AC TO MATCH NEW GUTTER. REGRADE BASE AS NECESSARY AND INSTALL 3" THICKNESS OF LEVEL 3, 1/2" ACP ~~FIBER MIX~~ (COMPACT TO 92% OF MMAD PER AASHTO T209) TO MATCH GRINDED ASPHALT SURFACE FOR THE FIRST LIFT, WITH 1-1/2" ASPHALT OVERLAY. CONFIRM LIMITS WITH ENGINEER

PAVING KEY NOTES

- (P1) GRIND EXISTING ASPHALT (1-1/2" THICKNESS) AND INSTALL ASPHALT OVERLAY. MAINTAIN EXISTING PAVEMENT SLOPES AND MATCH FRONT EDGE OF CONCRETE GUTTER. WORK DONE DURING DAYTIME WITH 2 LANES REMAINING OPEN FOR TRAFFIC AND FLAGGERS AS NEEDED.

EROSION CONTROL KEY NOTES

- (E1) INSTALL SILT SACK IN CATCH BASIN AND BIOBAGS, STRAW WATTLES, OR CURB INLET CHECK DAM (INCIDENTAL) IN FRONT OF CURB OPENING
- (E2) INSTALL BIOBAGS, STRAW WATTLES, OR CURB INLET CHECK DAM (INCIDENTAL) IN CURB INLET OPENING

STRIPING KEY NOTES

PAVEMENT MARKINGS TO MATCH EXISTING EXCEPT WHEN DIRECTED DIFFERENTLY BY ENGINEER (NO PAVEMENT REFLECTORS REQUIRED)

- (S1) INSTALL YELLOW THERMOPLASTIC LINE (4" WIDTH)
- (S2) INSTALL WHITE THERMOPLASTIC LINE (8" WIDTH)
- (S3) INSTALL WHITE THERMOPLASTIC LEFT TURN ARROW
- (S4) INSTALL DASHED YELLOW THERMOPLASTIC LINE (4" WIDTH)
- (S6) INSTALL WHITE THERMOPLASTIC "X-ING SCHOOL"
- (S7) INSTALL WHITE THERMOPLASTIC RIGHT TURN STRAIGHT ARROW
- (S8) INSTALL WHITE THERMOPLASTIC STOP BAR (12" WIDTH)
- (S9) INSTALL WHITE THERMOPLASTIC CROSSWALK LINE (12" WIDTH)
- (S10) INSTALL WHITE THERMOPLASTIC "ONLY"
- (S11) INSTALL WHITE THERMOPLASTIC LINE (4" WIDTH)

**SW SUNSET BOULEVARD
(EAST PLAN VIEW)**

SUNSET PLAN VIEW (EAST)

LOCATED IN SECTIONS 31A, 31C, & 32D, T2S, R1W, W.M. IN THE
CITY OF SHERWOOD, WASHINGTON COUNTY,
STATE OF OREGON

CITY OF SHERWOOD
ENGINEERING DEPARTMENT
22560 SW PINE STREET
SHERWOOD, OREGON 97140

PHONE: (503) 925-2309
FAX: (503) 625-0629
E-MAIL: engineering@sherwoodoregon.gov

DESIGNED BY:	JMC	DRAWN BY:	JMC	CHECKED BY:	CCC	FULL SIZE SCALE:	1"=30'	DATE:	APRIL, 2024
--------------	-----	-----------	-----	-------------	-----	------------------	--------	-------	-------------

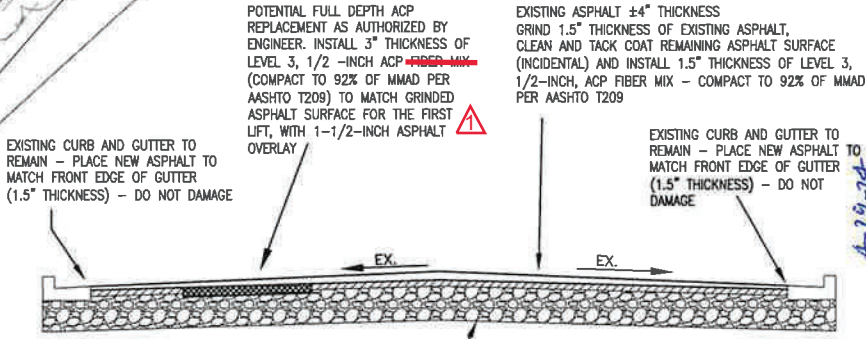
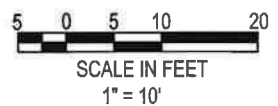
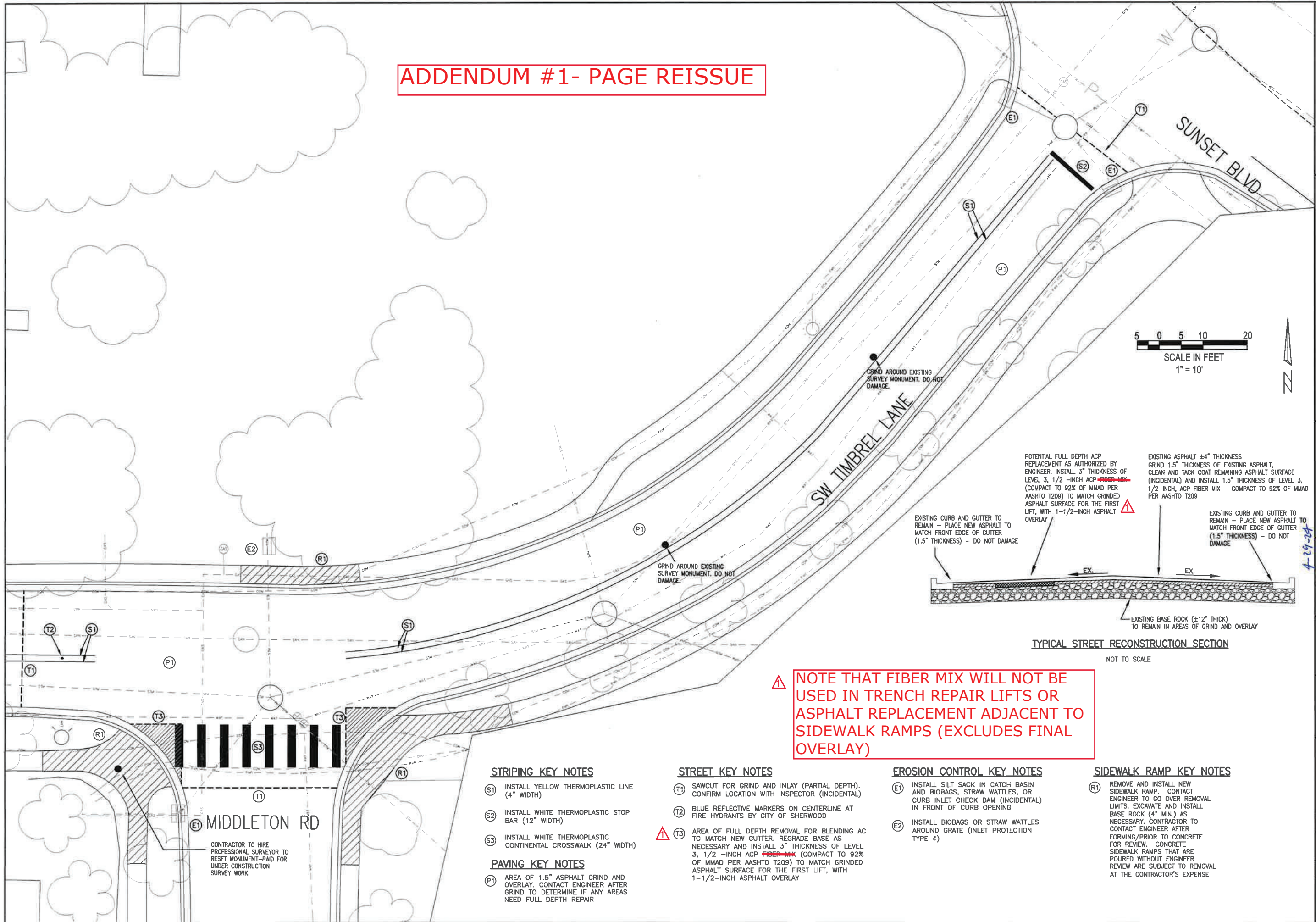
10-09-2024	ADDENDUM #1								
------------	-------------	--	--	--	--	--	--	--	--

JOB NO. _____

SHEET NO. **4** OF **11**

4-29-24

ADDENDUM #1- PAGE REISSUE



NOTE THAT FIBER MIX WILL NOT BE USED IN TRENCH REPAIR LIFTS OR ASPHALT REPLACEMENT ADJACENT TO SIDEWALK RAMPS (EXCLUDES FINAL OVERLAY)

STRIPING KEY NOTES

- (S1) INSTALL YELLOW THERMOPLASTIC LINE (4" WIDTH)
- (S2) INSTALL WHITE THERMOPLASTIC STOP BAR (12" WIDTH)
- (S3) INSTALL WHITE THERMOPLASTIC CONTINENTAL CROSSWALK (24" WIDTH)

PAVING KEY NOTES

- (P1) AREA OF 1.5" ASPHALT GRIND AND OVERLAY. CONTACT ENGINEER AFTER GRIND TO DETERMINE IF ANY AREAS NEED FULL DEPTH REPAIR

STREET KEY NOTES

- (T1) SAWCUT FOR GRIND AND INLAY (PARTIAL DEPTH). CONFIRM LOCATION WITH INSPECTOR (INCIDENTAL)
- (T2) BLUE REFLECTIVE MARKERS ON CENTERLINE AT FIRE HYDRANTS BY CITY OF SHERWOOD
- (T3) AREA OF FULL DEPTH REMOVAL FOR BLENDING AC TO MATCH NEW GUTTER. REGRADE BASE AS NECESSARY AND INSTALL 3" THICKNESS OF LEVEL 3, 1/2 -INCH ACP FIBER MIX (COMPACT TO 92% OF MMAD PER AASHTO T209) TO MATCH GRINDED ASPHALT SURFACE FOR THE FIRST LIFT, WITH 1-1/2-INCH ASPHALT OVERLAY

EROSION CONTROL KEY NOTES

- (E1) INSTALL SILT SACK IN CATCH BASIN AND BIOBAGS, STRAW WATTLES, OR CURB INLET CHECK DAM (INCIDENTAL) IN FRONT OF CURB OPENING
- (E2) INSTALL BIOBAGS OR STRAW WATTLES AROUND GRATE (INLET PROTECTION TYPE 4)

SIDEWALK RAMP KEY NOTES

- (R1) REMOVE AND INSTALL NEW SIDEWALK RAMP. CONTACT ENGINEER TO GO OVER REMOVAL LIMITS. EXCAVATE AND INSTALL BASE ROCK (4" MIN.) AS NECESSARY. CONTRACTOR TO CONTACT ENGINEER AFTER FORMING/PRIOR TO CONCRETE FOR REVIEW. CONCRETE SIDEWALK RAMPS THAT ARE POURED WITHOUT ENGINEER REVIEW ARE SUBJECT TO REMOVAL AT THE CONTRACTOR'S EXPENSE

MIDDLETON RD

CONTRACTOR TO HIRE PROFESSIONAL SURVEYOR TO RESET MONUMENT—PAID FOR UNDER CONSTRUCTION SURVEY WORK.

SW TIMBREL LANE
(PLAN VIEW)

TIMBREL PAVEMENT OVERLAY
(SUNSET BLVD—MIDDLETON RD)
LOCATED IN SECTIONS 31A, 31C, & 32D, T2S, R1W, W.M.
IN THE CITY OF SHERWOOD, WASHINGTON COUNTY,
STATE OF OREGON

CITY OF SHERWOOD
ENGINEERING DEPARTMENT
22560 SW PINE STREET
SHERWOOD, OREGON 97140
PHONE: (503) 925-2309
FAX: (503) 625-0629
E-MAIL: engineering@sherwoodoregon.gov



DESIGNED BY:	JMC
DRAWN BY:	JMC
CHECKED BY:	RS
FULL SIZE SCALE:	1"=10'
DATE:	APRIL, 2024
SUNSET_MJENCOE_TIMBREL_SHEETS.DWG	

ADDENDUM #1	
REVISIONS	
JOB NO.	
SHEET NO.	6
	11

**BID SCHEDULE
 SUNSET CURB RAMPS, GRIND AND INLAY, GAS ALTERNATE**

Item No.	Spec Section	Description	Unit	Quantity	Unit Price	Unit Total Cost
PART 00200 – TEMPORARY FEATURES AND APPURTENANCES						
1	00210	Mobilization	LS	1		
2	00221	Temporary Work Zone Traffic Control, Complete	LS	1		
3	00280	Erosion Control	LS	1		
PART 00300 – ROADWORK						
4	00305	Construction Survey Work	LS	1		
5	00310	Removal of Structures and Obstructions	LS	1		
6	00310	Removal of Asphalt, Full Depth	SY	100		
7	00310	Removal of Asphalt, Partial Depth	SY	475		
8	00310	Removal of Concrete Curb and Gutter	FT	193		
9	00310	Removal of Concrete Curb	FT	8		
10	00310	Removal of Concrete Sidewalk	SY	153		
PART 00400 -- DRAINAGE AND SEWERS						
13	00490	Adjusting Boxes	EA	15		
PART 00600 - BASES						
14	00620	Cold Plane Removal, 1-1/2" Deep	SY	7041		
15	00641	3/4"-0" Aggregate Base	TN	224		
PART 00700 – WEARING SURFACES						
16	00745	Level 3, 1/2-Inch ACP, Fiber Mix	TN	709		
17	00759	Concrete Curb and Gutter	FT	193		
18	00759	Concrete Sidewalk	SF	1374		
19	00759	Truncated Domes on New Surfaces	SF	90		
PART 00800 – PERMANENT TRAFFIC SAFETY AND GUIDANCE DEVICES						
20	00865	Thermoplastic, Extruded or Sprayed, Surface, Non-Profiled, 4-Inch, Yellow	FT	2690		
21	00865	Thermoplastic, Extruded or Sprayed, Surface, Non-Profiled, 4-Inch, White	FT	165		
22	00865	Thermoplastic, Extruded or Sprayed, Surface, Non-Profiled, 8-Inch, White	FT	155		
23	00867	Pavement Bar, Type AB	SF	280		
24	00867	Pavement Legend, Type AB, Arrows	EA	9		

REVISED-SEE ADDENDUM 1

BID SCHEDULE
SUNSET CURB RAMPS, GRIND AND INLAY, GAS ALTERNATE

Item No.	Spec Section	Description	Unit	Quantity	Unit Price	Unit Total Cost
25	00867	Pavement Legend, Type AB, "X-ING"	EA	1		
26	00867	Pavement Legend, Type AB, "ONLY"	EA	1		
27	00867	Pavement Legend, Type AB, "SCHOOL"	EA	1		
PART 01000 – RIGHT OF WAY DEVELOPMENT AND CONTROL						
28	01030	Yard Restoration	LS	1		
TOTAL BID						

BID WRITTEN IN WORDS:

_____ DOLLARS AND _____ CENTS

In the event of discrepancy, the amount in words shall dictate.

In accordance with the provisions of the Oregon Standard Specifications for Construction, 2021 Edition as modified by these bid documents, the undersigned Bidder submits the following Bid Schedule with the understanding that City

REVISED-SEE ADDENDUM 1

Signature of Authorized Agent

Company Name

Printed Name

Date

**BID SCHEDULE
 MEINECKE AND GRIND AND INLAY**

Item No.	Spec Section	Description	Unit	Quantity	Unit Price	Unit Total Cost
PART 00200 – TEMPORARY FEATURES AND APPURTENANCES						
1	00210	Mobilization	LS	1		
2	00221	Temporary Work Zone Traffic Control, Complete	LS	1		
3	00280	Erosion Control	LS	1		
PART 00300 – ROADWORK						
4	00305	Construction Survey Work	LS	1		
5	00310	Removal of Structures and Obstructions	LS	1		
6	00310	Removal and Restoration of Median Section	LS	1		
PART 00400 -- DRAINAGE AND SEWERS						
7	00490	Adjusting Boxes	EA	3		
PART 00600 - BASES						
8	00620	Cold Plane Removal 1-1/2" Deep	SY	856		
TOTAL BID						

REVISED-SEE ADDENDUM 1

BID WRITTEN IN WORDS:

_____ DOLLARS AND _____ CENTS

In the event of discrepancy, the amount in words shall dictate.

In accordance with the provisions of the Oregon Standard Specifications for Construction, 2021 Edition as modified by these bid documents, the undersigned Bidder submits the following Bid Schedule with the understanding that City reserves the right to increase, decrease, or completely eliminate quantities as set forth in 00120.20. Also, the Bidder offers to do the work, whether quantities area changed (increased or decreased) in accordance with 00195.20, or not changed, at the unit rate price stated in the following Bid Schedule:

 Signature of Authorized Agent

 Company Name

 Printed Name

 Date

**BID SCHEDULE
TIMBREL CURB RAMPS AND GRIND AND INLAY**

Item No.	Spec Section	Description	Unit	Quantity	Unit Price	Unit Total Cost
PART 00100 -- TEMPORARY FEATURES AND APPURTENANCES						
1	00210	Mobilization	LS	1		
2	00221	Temporary Work Zone Traffic Control, Complete	LS	1		
3	00280	Erosion Control	LS	1		
PART 00300 -- ROADWORK						
4	00305	Construction Survey Work	LS	1		
5	00310	Removal of Structures and Obstructions	LS	1		
6	00310	Removal of Asphalt, Full Depth	SY	18		
7	00310	Removal of Asphalt, Partial Depth	SY	23		
8	00310	Removal of Concrete Curb and Gutter	FT	54		
9	00310	Removal of Concrete Sidewalk	SY	71		
10	00320	Clearing and Grubbing	LS	1		
11	00330	General Excavation	CY	5		
PART 00400 -- DRAINAGE AND SEWERS						
REVISED-SEE ADDENDUM 1						
13	00620	Cold Plane Removal, 1-1/2" Deep	SY	962		
14	00641	3/4"-0" Aggregate Base	TN	10		
PART 00700 -- WEARING SURFACES						
15	00745	Level 3, 1/2-Inch ACP, Fiber Mix	TN	97		
16	00759	Concrete Curb and Gutter	FT	54		
17	00759	Concrete Sidewalk	SF	639		
18	00759	Truncated Domes on New Surfaces	SF	30		
PART 00800 -- PERMANENT TRAFFIC SAFETY AND GUIDANCE DEVICES						
19	00865	Thermoplastic, Extruded or Sprayed, Surface, Non-Profiled, 4-Inch, Yellow	FT	450		
20	00865	Thermoplastic, Extruded or Sprayed, Surface, Non-Profiled, 12-Inch, White	FT	13		
21	00867	Pavement Bar, Type AB	SF	160		
PART 01000 -- RIGHT OF WAY DEVELOPMENT AND CONTROL						
22	01070	Yard Restoration	LS	1		
TOTAL BID						

BID WRITTEN IN WORDS:

_____ DOLLARS AND _____ CENTS

The lowest responsive bidder will be determined by the lowest sum of all three project schedules (SW Sunset Boulevard, Meinecke Roundabout, and Timbrel Grind and Inlay).

In the event of discrepancy, the amount in words shall dictate.

In accordance with the provisions of the Oregon Standard Specifications for Construction 2021 Edition as modified by these bid documents, the undersigned Bidder submits the following Bid Schedule with the understanding that City reserves the right to increase, decrease, or completely eliminate quantities as set forth in 00120.20. Also, the Bidder offers to do the work, whether quantities area changed (increased or decreased) in accordance with 00195.20, or not changed, at the unit rate price stated in the following Bid Schedule:

Signature of Authorized Agent

Company Name

Printed Name

Date

REVISED-SEE ADDENDUM 1

surface to be tacked. Remove all material, loose or otherwise, that will reduce adhesion of the tack by brooming, flushing with water, or other approved methods. Cost of tack coat is incidental.

Add the following bid items to the following subsection:

00745.90 Payment –

Pay Item	Unit of Measurement
(d) Level 3, 1/2-Inch ACP, Fiber Mix Treated	Ton

SECTION 00746 – CRACK SEALING FLEXIBLE PAVEMENTS

Comply with Section 00746 of the Standard Specifications modified as follows:

Add the following text to the following subsection as noted:

0746.00 Scope -

All joints between the new ACP and existing asphalt surface shall be crack sealed with hot rubber asphalt sealant.

REVISED-SEE ADDENDUM 1

Delete the text of the following subsection and replace with the following:

00746.90 Payment – Crack Sealing is incidental.

SECTION 00759 – MISCELLANEOUS PORTLAND CEMENT CONCRETE STRUCTURES

Comply with Section 00759 of the Standard Specifications modified as follows:

Add the following bid items to the following subsection:

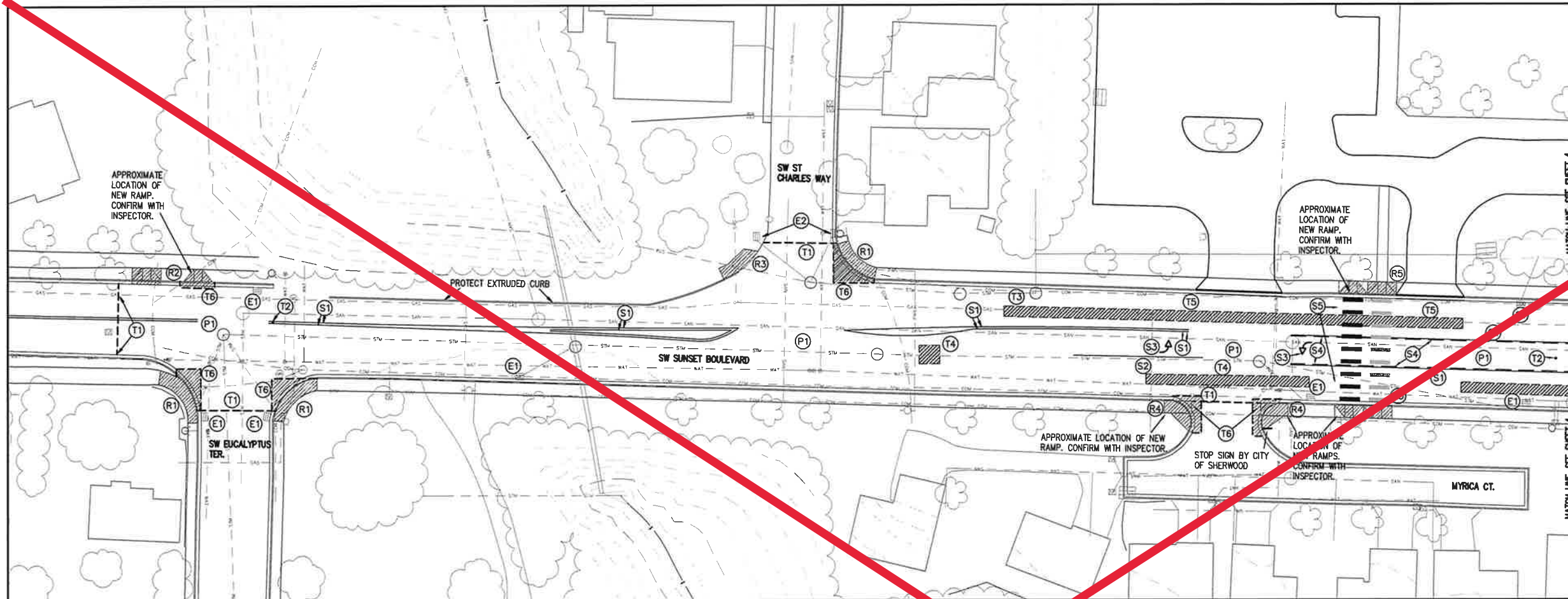
00759.90 Payment –

Pay Item	Unit of Measurement
(l) Concrete Curb and Gutter	Foot
(m) Concrete Curb, Vertical	Foot
(n) Concrete Sidewalk	Foot

PART 00800 – PERMANENT TRAFFIC SAFETY AND GUIDANCE DEVICES

SECTION 00865 – LONGITUDINAL PAVEMENT MARKING – DURABLE

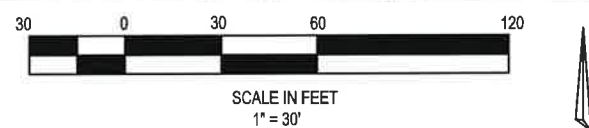
Comply with Section 00865 of the Standard Specifications modified as follows:



SIDEWALK RAMP KEY NOTES

- (R1) REMOVE AND INSTALL NEW SIDEWALK RAMP. REMOVAL LIMITS SHOWN ARE APPROXIMATE-CONTACT ENGINEER TO GO OVER REMOVAL LIMITS OF CONCRETE AND ASPHALT. CONTRACTOR TO CONTACT ENGINEER AFTER FORMING/PRIOR TO CONCRETE FOR REVIEW. CONCRETE SIDEWALK RAMP THAT ARE LAID WITHOUT ENGINEER REVIEW ARE SUBJECT TO REMOVAL AT THE CONTRACTOR'S EXPENSE
- (R2) REMOVE AND INSTALL NEW SIDEWALK RAMP APPROXIMATELY 20' EAST OF OLD LOCATION. CONTACT ENGINEER TO GO OVER REMOVAL LIMITS. CONTRACTOR TO CONTACT ENGINEER AFTER FORMING/PRIOR TO CONCRETE FOR REVIEW. INSTALL SIDEWALK IN OLD RAMP LOCATION
- (R3) REMOVE EXISTING ASPHALT AND APPROXIMATELY 8' OF CURB. INSTALL CONCRETE-CONTACT ENGINEER FOR DIRECTION. INSTALL TRUNCATED DOME PAD
- (R4) REMOVE AND INSTALL NEW SIDEWALK RAMP (CONFIGURATION CHANGE). CONTACT ENGINEER TO GO OVER REMOVAL LIMITS. CONTRACTOR TO CONTACT ENGINEER AFTER FORMING/PRIOR TO CONCRETE FOR REVIEW
- (R5) REMOVE AND INSTALL NEW SIDEWALK RAMP APPROXIMATELY 15' WEST. CONFIRM REMOVAL LIMITS AND NEW LOCATION WITH ENGINEER. INSTALL SIDEWALK IN OLD RAMP LOCATION

REVISED-SEE ADDENDUM 1



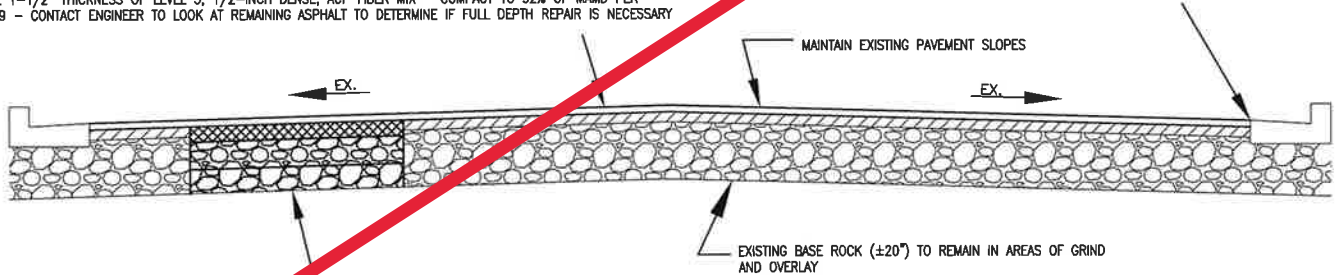
TIMING NOTES: SIDEWALK RESTORATION OVER GAS LINE (EXPECTED NW)

TYPICAL STREET RECONSTRUCTION SECTION

NOT TO SCALE

GRIND 1-1/2" THICKNESS OF EXISTING ASPHALT (±5%). CLEAN AND TACK COAT REMAINING ASPHALT SURFACE (INCIDENTAL) AND INSTALL 1-1/2" THICKNESS OF LEVEL 3, 1/2-INCH DENSE, ACP FIBER MIX - COMPACT TO 92% OF MAMD PER AASHTO T209 - CONTACT ENGINEER TO LOOK AT REMAINING ASPHALT TO DETERMINE IF FULL DEPTH REPAIR IS NECESSARY

EXISTING CURB AND GUTTER TO REMAIN - PLACE NEW ASPHALT TO MATCH FRONT EDGE OF GUTTER - DO NOT DAMAGE - TRIM FRONT EDGE OF CONCRETE GUTTER WHERE JAGGED TO SMOOTH (INCIDENTAL)



SUBGRADE REPAIR: AFTER GRINDING, CONTACT ENGINEER FOR REVIEW OF REMAINING PAVEMENT CONDITIONS. REMOVE REMAINING DEPTH OF EXISTING ASPHALT AT LOCATIONS AUTHORIZED BY THE ENGINEER. REMOVE BASE ROCK TO DEPTH DIRECTED BY ENGINEER - INSTALL GEOGRID ON BOTTOM AND ADDITIONAL LAYER OF GEOGRID IF ROCK SECTIONS ARE GREATER THAN 16" IN DEPTH. CONTRACTOR TO CUT AND INSTALL GEOGRID (INCIDENTAL). CITY OF SHERWOOD WILL DELIVER GEOGRID TO SITE. LEFT OVER GEOGRID TO BE GIVEN BACK TO CITY OF SHERWOOD. INSTALL 3/4"-0" AGGREGATE BASE UP TO 4" BELOW GRINDING ASPHALT SURFACE (COMPACT TO 95% DENSITY OF AASHTO T-180 TEST METHOD) - INSTALL 4" THICKNESS OF LEVEL 3, 1/2-INCH, ACP FIBER MIX IN 2 LIFTS (COMPACT TO 92% OF MAMD PER AASHTO T209) TO MATCH GRINDING ASPHALT SURFACE - HATCHED AREA - CONFIRM LIMITS WITH ENGINEER.

NOTE: CONTRACTOR TO COORDINATE WITH ENGINEER TO EVALUATE PAVEMENT CONDITION AFTER GRIND TO DETERMINE EXTENT OF PAVEMENT SUBGRADE REPAIR. QUANTITIES IN BID SCHEDULE ARE BASED UPON AREAS SHOWN ON PLAN. ACTUAL AREAS WILL BE DETERMINED IN FIELD BY ENGINEER.

STRIPING KEY NOTES

PAVEMENT MARKINGS TO MATCH EXISTING EXCEPT WHEN DIRECTED DIFFERENTLY BY ENGINEER (NO PAVEMENT REFLECTORS REQUIRED)

- (S1) INSTALL YELLOW THERMOPLASTIC LINE (4" WIDTH)
- (S2) INSTALL WHITE THERMOPLASTIC LINE (8" WIDTH)
- (S3) INSTALL WHITE THERMOPLASTIC LEFT TURN ARROW
- (S4) INSTALL DASHED YELLOW THERMOPLASTIC LINE (4" WIDTH)
- (S5) INSTALL WHITE THERMOPLASTIC CONTINENTAL CROSSWALK (24" WIDTH)

EROSION CONTROL KEY NOTES

- (E1) INSTALL SILT SACK IN CATCH BASIN AND BIOBAGS, STRAW WATTLES, OR CURB INLET CHECK DAM (INCIDENTAL) IN FRONT OF CURB OPENING
- (E2) INSTALL SILT SACK IN CATCH BASIN

STREET KEY NOTES

- (T1) SAWCUT FOR GRIND AND INLAY (PARTIAL DEPTH). CONFIRM LOCATION WITH INSPECTOR (INCIDENTAL).
- (T2) BLUE REFLECTIVE MARKERS ON CENTERLINE AT FIRE HYDRANTS BY CITY OF SHERWOOD
- (T3) CAUTION: EXISTING SHALLOW GAS LINE. TO BE REPLACED BY NW NATURAL. GRIND AND INLAY SHALL NOT BE INSTALLED UNTIL NW NATURAL HAS FINISHED TRENCH
- (T4) AFTER GRINDING, AS DIRECTED BY ENGINEER, REMOVE REMAINING DEPTH OF ASPHALT TO BASE ROCK TO ALLOW FOR PLACEMENT OF 4" THICKNESS OF LEVEL 3, 1/2-INCH, ACP FIBER MIX IN 2 LIFTS (COMPACT TO 92% OF MAMD PER AASHTO T209) TO MATCH GRINDING ASPHALT SURFACE PRIOR TO 1-1/2" OVERLAY
- (T5) AFTER GRINDING, AS DIRECTED BY ENGINEER, REMOVE REMAINING DEPTH OF ASPHALT TO BASE ROCK TO ALLOW FOR PLACEMENT OF 4" THICKNESS OF LEVEL 3, 1/2-INCH, ACP FIBER MIX IN 2 LIFTS (COMPACT TO 92% OF MAMD PER AASHTO T209) TO MATCH GRINDING ASPHALT SURFACE PRIOR TO 1-1/2" OVERLAY. THESE AREAS WILL LIKELY BE COMPLETED BY NW NATURAL AFTER SCHOOL IS OUT FOR SUMMER
- (T6) AREAS OF FULL DEPTH REMOVAL FOR BLENDING AC TO MATCH NEW GUTTER. REGRADE BASE AS NECESSARY AND INSTALL 3" THICKNESS OF LEVEL 3, 1/2" ACP FIBER MIX (COMPACT TO 92% OF MAMD PER AASHTO T209) TO MATCH GRINDING ASPHALT SURFACE FOR THE FIRST LIFT, WITH 1-1/2" ASPHALT OVERLAY. CONFIRM LIMITS WITH ENGINEER

PAVING KEY NOTES

- (P1) GRIND EXISTING ASPHALT (1-1/2" THICKNESS) AND INSTALL ASPHALT OVERLAY. MAINTAIN EXISTING PAVEMENT SLOPES AND MATCH FRONT EDGE OF CONCRETE GUTTER. WORK DONE DURING DAYTIME WITH 2 LANES REMAINING OPEN FOR TRAFFIC AND FLAGGERS AS NEEDED.

A-29-24

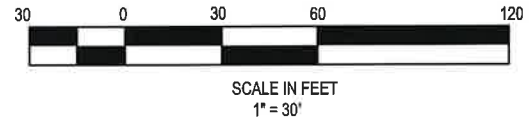
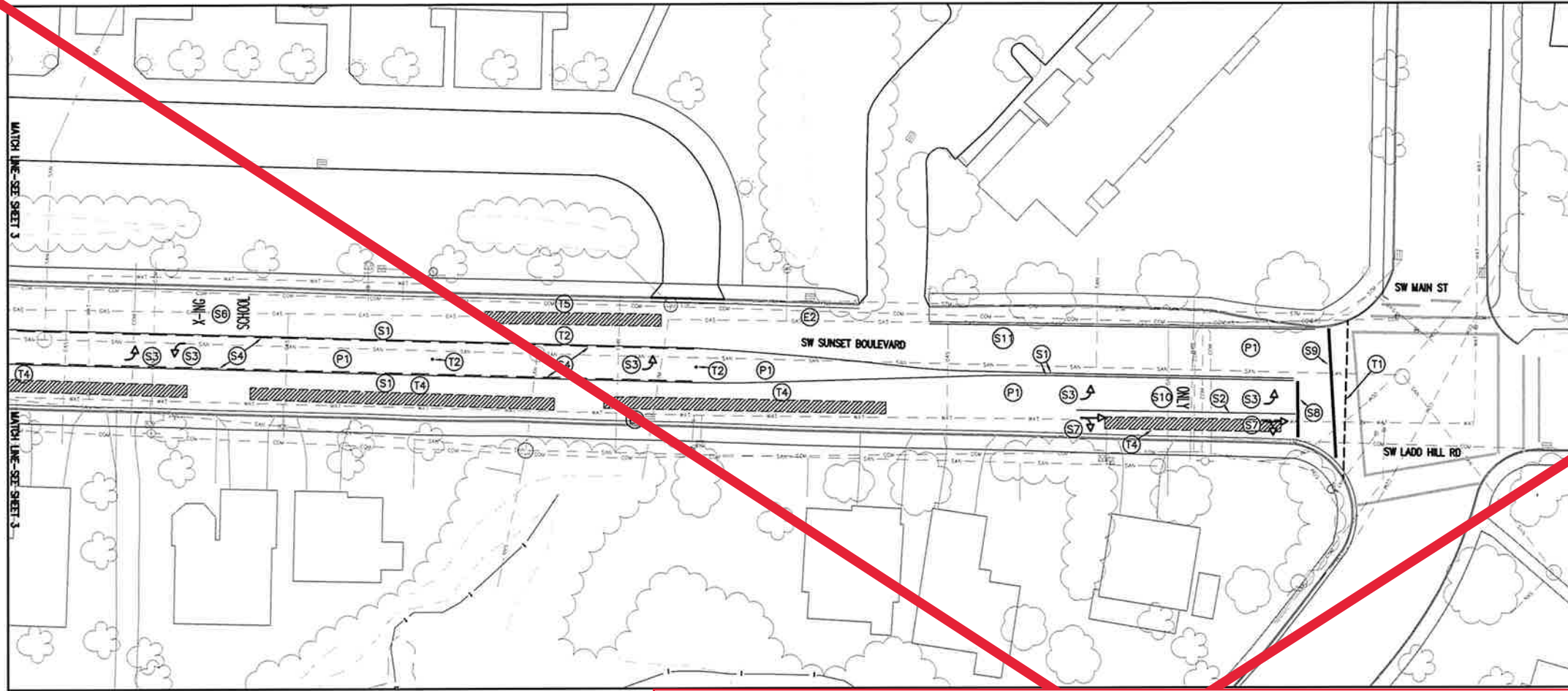


DESIGNED BY:	JMC
DRAWN BY:	JMC
CHECKED BY:	CCC
FULL SIZE SCALE:	1"=30'
DATE:	APRIL 2024
SUNSET_MENCKE_TMBREL_SHEETS.DWG	

REVISIONS	
NO. 1	DATE
3	
11	

SW SUNSET BOULEVARD (WEST PLAN VIEW)
SUNSET PLAN VIEW (WEST)
 LOCATED IN SECTIONS 31A, 31C, & 32D, T2S, R1W, W.M. IN THE CITY OF SHERWOOD, WASHINGTON COUNTY, STATE OF OREGON

CITY OF SHERWOOD
 ENGINEERING DEPARTMENT
 22560 SW PINE STREET
 SHERWOOD, OREGON 97140
 PHONE: (503) 925-2309
 FAX: (503) 625-0629
 E-MAIL: engineering@sherwoodoregon.gov



TIMING NOTES: SIDEWALK REPAIRS TO BE COMPLETED PRIOR TO PAVEMENT RESTORATION.

REVISED-SEE ADDENDUM 1

STREET KEY NOTES

- T1 SAWCUT FOR GRIND AND INLAY (PARTIAL DEPTH). CONFIRM LOCATION WITH INSPECTOR (INCIDENTAL).
- T2 BLUE REFLECTIVE MARKERS ON CENTERLINE AT FIRE HYDRANTS BY CITY OF SHERWOOD
- T3 CAUTION: EXISTING SHALLOW GAS LINE. TO BE REPLACED BY NW NATURAL. GRIND AND INLAY SHALL NOT BE INSTALLED UNTIL NW NATURAL HAS FINISHED TRENCH
- T4 AFTER GRINDING, AS DIRECTED BY ENGINEER, REMOVE REMAINING DEPTH OF ASPHALT TO BASE ROCK TO ALLOW FOR PLACEMENT OF 4" THICKNESS OF LEVEL 3, 1/2-INCH, ACP FIBER MIX IN 2 LIFTS (COMPACT TO 92% OF MMAD PER AASHTO T209) TO MATCH GRINDED ASPHALT SURFACE PRIOR TO 1-1/2" OVERLAY
- T5 AFTER GRINDING, AS DIRECTED BY ENGINEER, REMOVE REMAINING DEPTH OF ASPHALT TO BASE ROCK TO ALLOW FOR PLACEMENT OF 4" THICKNESS OF LEVEL 3, 1/2-INCH, ACP FIBER MIX IN 2 LIFTS (COMPACT TO 92% OF MMAD PER AASHTO T209) TO MATCH GRINDED ASPHALT SURFACE PRIOR TO 1-1/2" OVERLAY. THESE AREAS WILL LIKELY BE COMPLETED BY NW NATURAL AFTER SCHOOL IS OUT FOR SUMMER
- T6 AREA OF FULL DEPTH REMOVAL FOR BLENDING TO MATCH NEW GUTTER. REGRADE BASE AS NECESSARY AND INSTALL 3" THICKNESS OF LEVEL 3, 1/2" ACP FIBER MIX (COMPACT TO 92% OF MMAD PER AASHTO T209) TO MATCH GRINDED ASPHALT SURFACE FOR THE FIRST LIFT, WITH 1-1/2" ASPHALT OVERLAY. CONFIRM LOCATIONS WITH ENGINEER

PAVING KEY NOTES

- P1 GRIND EXISTING ASPHALT (1-1/2" THICKNESS) AND INSTALL ASPHALT OVERLAY. MAINTAIN EXISTING PAVEMENT SLOPES AND MATCH FRONT EDGE OF CONCRETE GUTTER. WORK DONE DURING DAYTIME WITH 2 LANES REMAINING OPEN FOR TRAFFIC AND FLAGGERS AS NEEDED.

EROSION CONTROL KEY NOTES

- E1 INSTALL SILT SACK IN CATCH BASIN AND BIOBAGS, STRAW WATTLES, OR CURB INLET CHECK DAM (INCIDENTAL) IN FRONT OF CURB OPENING
- E2 INSTALL BIOBAGS, STRAW WATTLES, OR CURB INLET CHECK DAM (INCIDENTAL) IN CURB INLET OPENING

STRIPING KEY NOTES

PAVEMENT MARKINGS TO MATCH EXISTING EXCEPT WHEN DIRECTED DIFFERENTLY BY ENGINEER (NO PAVEMENT REFLECTORS REQUIRED)

- S1 INSTALL YELLOW THERMOPLASTIC LINE (4" WIDTH)
- S2 INSTALL WHITE THERMOPLASTIC LINE (8" WIDTH)
- S3 INSTALL WHITE THERMOPLASTIC LEFT TURN ARROW
- S4 INSTALL DASHED YELLOW THERMOPLASTIC LINE (4" WIDTH)
- S6 INSTALL WHITE THERMOPLASTIC "X-ING SCHOOL"
- S7 INSTALL WHITE THERMOPLASTIC RIGHT TURN STRAIGHT ARROW
- S8 INSTALL WHITE THERMOPLASTIC STOP BAR (12" WIDTH)
- S9 INSTALL WHITE THERMOPLASTIC CROSSWALK LINE (12" WIDTH)
- S10 INSTALL WHITE THERMOPLASTIC "ONLY"
- S11 INSTALL WHITE THERMOPLASTIC LINE (4" WIDTH)

**SW SUNSET BOULEVARD
(EAST PLAN VIEW)**

SUNSET PLAN VIEW (EAST)
LOCATED IN SECTIONS 31A, 31C, & 32D, T2S, R1W, W.M. IN THE CITY OF SHERWOOD, WASHINGTON COUNTY, STATE OF OREGON

**CITY OF SHERWOOD
ENGINEERING DEPARTMENT
22560 SW PINE STREET
SHERWOOD, OREGON 97140**
PHONE: (503) 925-2309
FAX: (503) 625-0629
E-MAIL: engineering@sherwoodoregon.gov

4-29-24

DESIGNED BY:	JMC	DRAWN BY:	JMC
CHECKED BY:	CCC	FULL SIZE SCALE:	1"=30'
DATE:	APRIL, 2024	SUNSET_MENECKE_TMBREL_SHEETS.DWG	

REVISIONS

NO.	DESCRIPTION
4	

11

