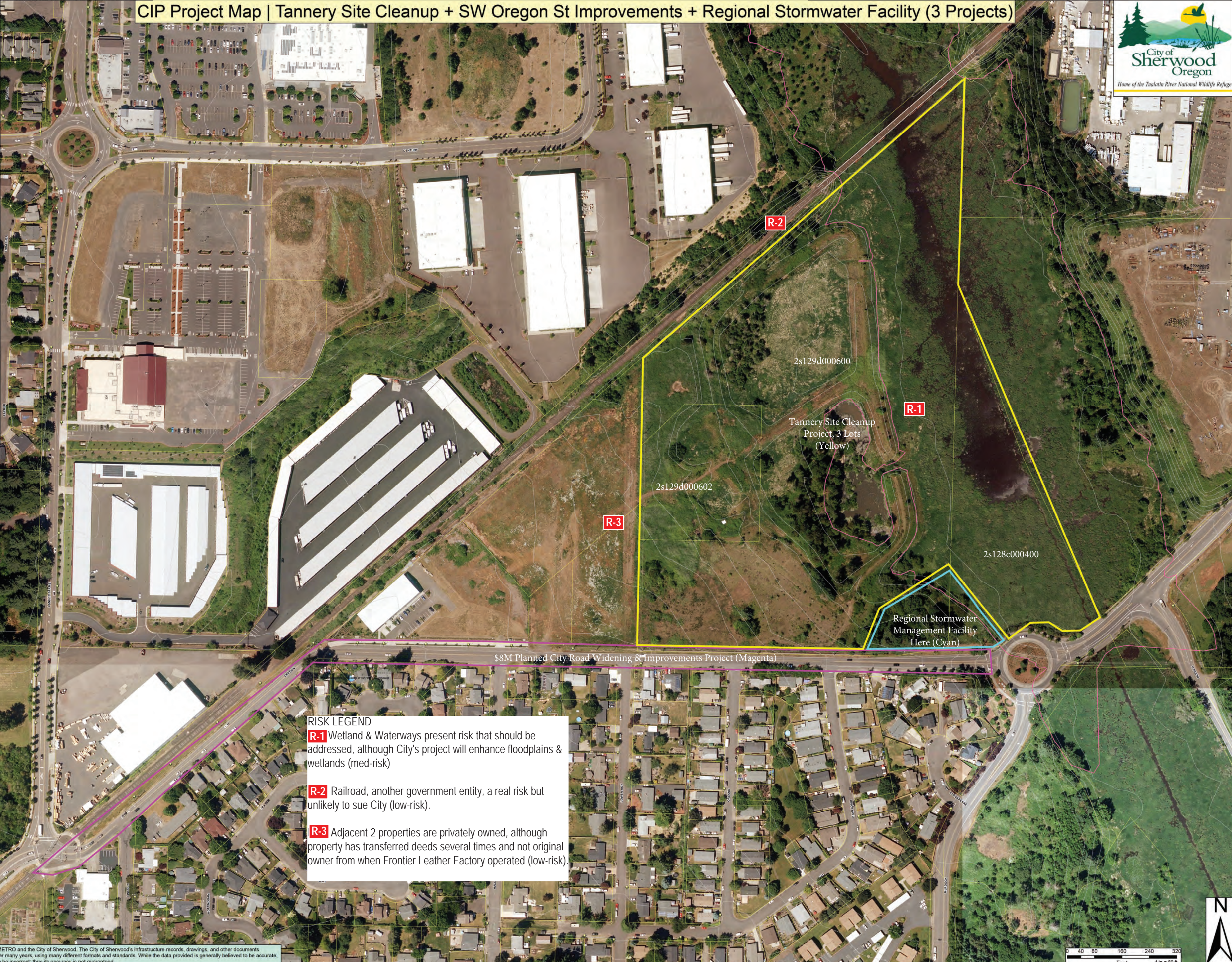


CIP Project Map | Tannery Site Cleanup + SW Oregon St Improvements + Regional Stormwater Facility (3 Projects)



- Legend**
- Taxlots
 - Stormwater Manhole
 - WG Manholes
 - all other valves
- SUMP**
- Unsumped
 - Summed
 - Storm Filters
 - Stormwater Man
 - Sanitary Manhole
 - Sanitary Cleanouts
 - Sanitary Main
 - Sanitary Lateral
 - Sanitary Lift Station
 - 100-Year Local Study
- Valves**
- Unknown
- VALVE STATUS**
- ARV
 - Open
 - Closed
 - Hydrants
 - Meters
 - Water Main
 - Service Lines
 - Vaults
 - Flow Vault
 - Future
 - Underground
 - Aerial
- Fiber Conduit**
- Conduit
- Conduit_Type**
- Proposed
 - Street Lights
 - Continous_5



RISK LEGEND

R-1 Wetland & Waterways present risk that should be addressed, although City's project will enhance floodplains & wetlands (med-risk)

R-2 Railroad, another government entity, a real risk but unlikely to sue City (low-risk).

R-3 Adjacent 2 properties are privately owned, although property has transferred deeds several times and not original owner from when Frontier Leather Factory operated (low-risk).

Map data provided by METRO and the City of Sherwood. The City of Sherwood's infrastructure records, drawings, and other documents have been gathered over many years, using many different formats and standards. While the data provided is generally believed to be accurate, occasionally it proves to be incorrect; thus its accuracy is not guaranteed.

