

CITY OF SHERWOOD

DIVISION STREET AND MANSFIELD STREET GRIND AND INLAY

SEPTEMBER 2021

(BID DOCUMENT VOLUME 2 OF 2 - CONTRACT DRAWINGS)

COVER SHEET

DIVISION STREET AND MANSFIELD STREET
GRIND AND INLAY

LOCATED IN SECTIONS 31AD AND 31DA, T2S, R1W, W.M.
IN THE CITY OF SHERWOOD, WASHINGTON COUNTY,
STATE OF OREGON

CITY OF SHERWOOD
ENGINEERING DEPARTMENT
22560 SW PINE STREET
SHERWOOD, OREGON 97140

PHONE: (503) 925-2309
FAX: (503) 625-0629
E-MAIL: engineering@sherwoodoregon.gov



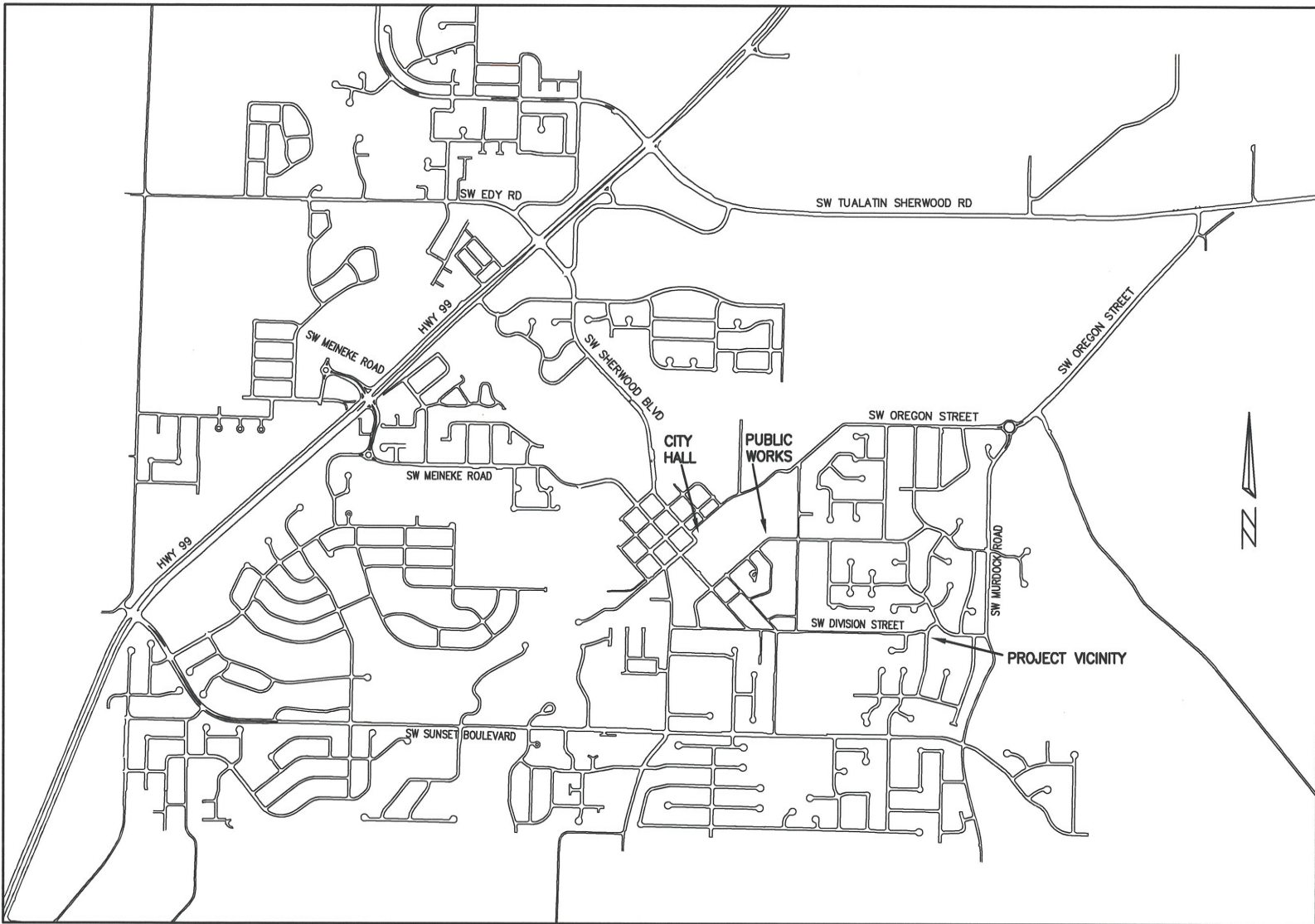
17-1-6

SHEET INDEX:

1. COVER SHEET
2. GENERAL NOTES
3. PLAN VIEW AND SECTIONS
4. DETAILS

PROJECT LOCATION:
SW DIVISION STREET (350' WEST OF CUTHILL PLACE - MANSFIELD STREET)
SW MANSFIELD STREET (UPPER ROY STREET - 350' SOUTH OF DIVISION STREET)

DEVELOPER/OWNER:
CITY OF SHERWOOD
22560 SW PINE ST
SHERWOOD, OREGON 97140
CONTACT: CRAIG CHRISTENSEN, P.E.
PH. 503-925-2301
CHRISTENSENC@SHERWOODOREGON.GOV



THIS DESIGN COMPLIES WITH ORS 92.044 (7) IN THAT NO UTILITY INFRASTRUCTURE IS DESIGNED TO BE WITHIN ONE (1) FOOT OF A SURVEY MONUMENT LOCATION SHOWN ON A SUBDIVISION OR PARTITION PLAT. NO DESIGN EXCEPTIONS NOR FINAL FIELD LOCATION CHANGES SHALL BE PERMITTED IF THAT CHANGE WOULD CAUSE ANY UTILITY INFRASTRUCTURE TO BE PLACED WITHIN THE PROHIBITED AREA.

VICINITY MAP
NOT TO SCALE

INSPECTOR INFORMATION:

CITY OF SHERWOOD: ANDY STIRLING (503) 925-2307
CONTACT INSPECTOR 48 HOURS PRIOR TO CONSTRUCTION.

SURVEY INFORMATION:

HORIZONTAL
AERIAL TOPOGRAPHIC MAP (2004) AND VISUAL OBSERVATION.
VERTICAL
AERIAL TOPOGRAPHIC MAP (2004)

ATTENTION EXCAVATORS: OREGON LAW REQUIRES YOU TO FOLLOW RULES ADOPTED BY THE OREGON UTILITY NOTIFICATION CENTER. THOSE RULES ARE SET FORTH IN OAR 952-011-0010 THROUGH OAR 952-001-0090. YOU MAY OBTAIN COPIES OF THESE RULES FROM THE CENTER BY CALLING (503) 232-1987. IF YOU HAVE ANY QUESTIONS ABOUT THE RULES, YOU MAY CONTACT THE CENTER. YOU MUST NOTIFY THE CENTER AT LEAST 2 BUSINESS DAYS, BEFORE COMMENCING ANY EXCAVATION. CALL (503) 246-6699.

DESIGNED BY:	CCC	DATE:	SEPTEMBER, 2021
DRAWN BY:	CCC	FULL SIZE SCALE:	AS NOTED
CHECKED BY:	AS & RS		
SUNSET_SHEETS.DWG			

JOB NO.	
SHEET NO.	1
	of 4

REVISIONS

GENERAL NOTES

- 1. ALL CONSTRUCTION WORK, MATERIALS AND TESTING SHALL CONFORM TO THE APPLICABLE SECTION OF THE CITY OF SHERWOOD ENGINEERING DESIGN AND STANDARD DETAILS MANUAL...

EROSION CONTROL NOTES

- 1. THE CONTRACTOR IS RESPONSIBLE FOR THE INSTALLATION AND MAINTENANCE OF ALL EROSION AND SEDIMENT CONTROL MEASURES IN ACCORDANCE WITH LOCAL, STATE, AND FEDERAL REGULATIONS.

WORK HOURS/TRAFFIC CONTROL NOTES

- 1. WORK HOURS ARE FROM 8:00AM TO 6:00PM MONDAY THROUGH FRIDAY.

STREET NOTES

- 1. IN AREAS WHERE CURB AND GUTTER EXISTS, NEW ASPHALT WILL MATCH FRONT EDGE OF CONCRETE GUTTER.

GENERAL NOTES

DIVISION STREET AND MANSFIELD STREET GRIND AND INLAY

LOCATED IN SECTIONS 31AD AND 31DA, T2S, R1W, W.M. IN THE CITY OF SHERWOOD, WASHINGTON COUNTY, STATE OF OREGON

CITY OF SHERWOOD ENGINEERING DEPARTMENT 22550 SW PINE STREET SHERWOOD, OREGON 97140

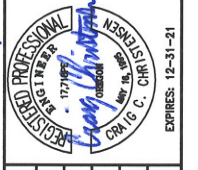


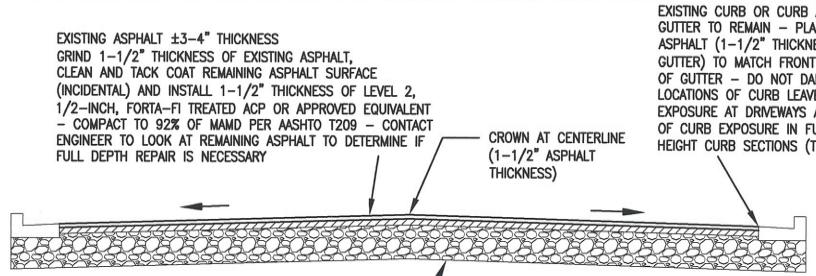
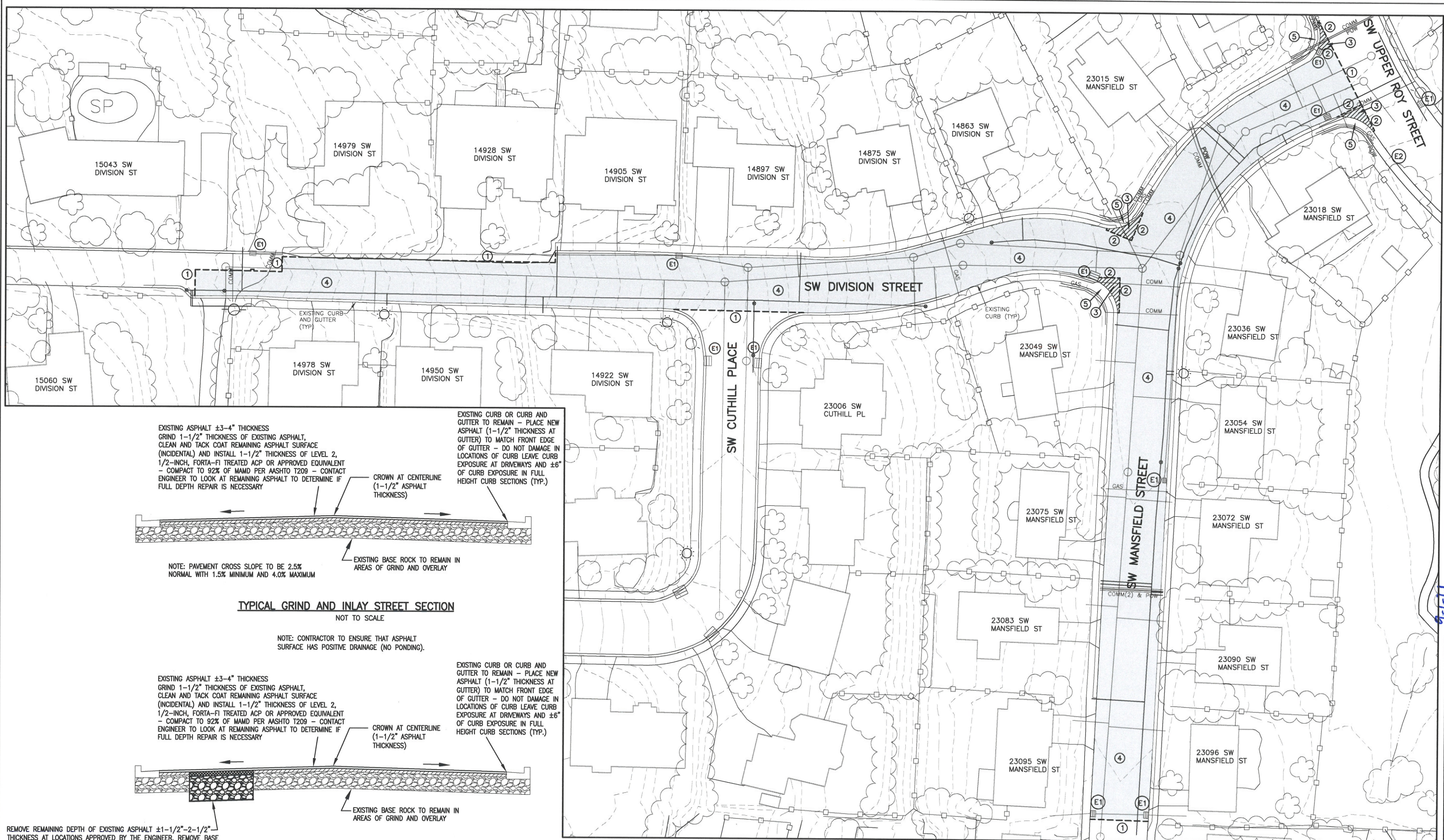
Table with columns: DESIGNED BY, DRAWN BY, CHECKED BY, FULL SIZE SCALE, DATE, SUNSET_SHEETS

Table with columns: SHEET NO., SHEET 2, 4

Table with columns: REVISIONS

LEGEND

- = EXISTING CURB AND GUTTER



EXISTING ASPHALT ±3-4" THICKNESS
GRIND 1-1/2" THICKNESS OF EXISTING ASPHALT,
CLEAN AND TACK COAT REMAINING ASPHALT SURFACE
(INCIDENTAL) AND INSTALL 1-1/2" THICKNESS OF LEVEL 2,
1/2-INCH, FORTI-FI TREATED ACP OR APPROVED EQUIVALENT
- COMPACT TO 92% OF MAMD PER AASHTO T209 - CONTACT
ENGINEER TO LOOK AT REMAINING ASPHALT TO DETERMINE IF
FULL DEPTH REPAIR IS NECESSARY

EXISTING CURB OR CURB AND
GUTTER TO REMAIN - PLACE NEW
ASPHALT (1-1/2" THICKNESS AT
GUTTER) TO MATCH FRONT EDGE
OF GUTTER - DO NOT DAMAGE IN
LOCATIONS OF CURB LEAVE CURB
EXPOSURE AT DRIVEWAYS AND ±6"
OF CURB EXPOSURE IN FULL
HEIGHT CURB SECTIONS (TYP.)

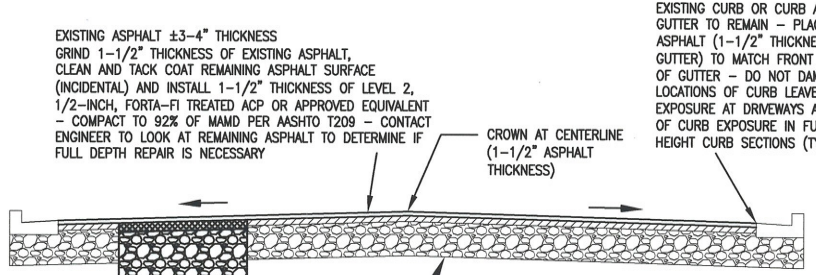
CROWN AT CENTERLINE
(1-1/2" ASPHALT
THICKNESS)

EXISTING BASE ROCK TO REMAIN IN
AREAS OF GRIND AND OVERLAY

NOTE: PAVEMENT CROSS SLOPE TO BE 2.5%
NORMAL WITH 1.5% MINIMUM AND 4.0% MAXIMUM

TYPICAL GRIND AND INLAY STREET SECTION
NOT TO SCALE

NOTE: CONTRACTOR TO ENSURE THAT ASPHALT
SURFACE HAS POSITIVE DRAINAGE (NO PONDING).



EXISTING ASPHALT ±3-4" THICKNESS
GRIND 1-1/2" THICKNESS OF EXISTING ASPHALT,
CLEAN AND TACK COAT REMAINING ASPHALT SURFACE
(INCIDENTAL) AND INSTALL 1-1/2" THICKNESS OF LEVEL 2,
1/2-INCH, FORTI-FI TREATED ACP OR APPROVED EQUIVALENT
- COMPACT TO 92% OF MAMD PER AASHTO T209 - CONTACT
ENGINEER TO LOOK AT REMAINING ASPHALT TO DETERMINE IF
FULL DEPTH REPAIR IS NECESSARY

EXISTING CURB OR CURB AND
GUTTER TO REMAIN - PLACE NEW
ASPHALT (1-1/2" THICKNESS AT
GUTTER) TO MATCH FRONT EDGE
OF GUTTER - DO NOT DAMAGE IN
LOCATIONS OF CURB LEAVE CURB
EXPOSURE AT DRIVEWAYS AND ±6"
OF CURB EXPOSURE IN FULL
HEIGHT CURB SECTIONS (TYP.)

CROWN AT CENTERLINE
(1-1/2" ASPHALT
THICKNESS)

EXISTING BASE ROCK TO REMAIN IN
AREAS OF GRIND AND OVERLAY

TYPICAL STREET RECONSTRUCTION SECTION
NOT TO SCALE

REMOVE REMAINING DEPTH OF EXISTING ASPHALT ±1-1/2"-2-1/2"
THICKNESS AT LOCATIONS APPROVED BY THE ENGINEER, REMOVE BASE
ROCK TO 6" BELOW EXISTING SUBGRADE - ENGINEER TO PROBE TO
DETERMINE IF ADDITIONAL EXCAVATION IS REQUIRED - INSTALL
GEOGRID ON BOTTOM AND ADDITIONAL LAYER OF GEOGRID IF ROCK
SECTION IS GREATER THAN 16" IN DEPTH. CONTRACTOR TO CUT AND
INSTALL GEOGRID (INCIDENTAL) WHILE CITY OF SHERWOOD WILL
DELIVER GEOGRID TO SITE. REMAIN GEOGRID TO BE KEPT BY CITY
OF SHERWOOD. INSTALL 3/4"-0" AGGREGATE BASE UP TO 3" BELOW
GRINDED ASPHALT SURFACE (COMPACT TO 95% DENSITY OF AASHTO
T-180 TEST METHOD) - INSTALL 3" THICKNESS OF LEVEL 2,
1/2-INCH, FORTI-FI TREATED ACP OR APPROVED EQUIVALENT
(COMPACT TO 92% OF MAMD PER AASHTO T209) TO MATCH GRINDED
ASPHALT SURFACE - CONFIRM LIMITS WITH ENGINEER

NOTE: CONTACT ENGINEER AFTER ASPHALT GRINDING
TO DETERMINE IF THERE ARE AREAS THAT NEED
FULL DEPTH RECONSTRUCTION. ALLOW FOR TIME FOR
RECONSTRUCTION PRIOR TO ASPHALT OVERLAY.

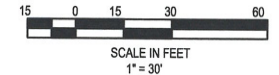
NOTE: GEOGRID TO BE WRAPPED UP THE SIDE
OF TRENCH BY 2" ON ALL SIDES.

STREET KEY NOTES

- ① SAWCUT FOR GRIND AND INLAY (PARTIAL DEPTH).
CONFIRM LOCATION WITH INSPECTOR.
- ② SAWCUT FOR FULL DEPTH ASPHALT REMOVAL.
- ③ REMOVE FULL DEPTH OF ASPHALT IN ORDER TO
BLEND ASPHALT TO MATCH NEW SIDEWALK RAMP
(FLUSH). GRADE ROCK AS NECESSARY
(INCIDENTAL) FOR PLACEMENT OF A 2-1/2"
ASPHALT BASE LIFT PRIOR TO 1-1/2" OVERLAY.
(HATCHED AREA)
- ④ GRIND EXISTING ASPHALT (1-1/2" THICKNESS)
AND INSTALL ASPHALT OVERLAY. (SHADED AREA)
- ⑤ CONTRACTOR TO CONTACT ENGINEER TO MEET ON
SITE TO GO OVER CONCRETE REMOVAL LIMITS AND
RAMP CONFIGURATION. CONTRACTOR TO CONTACT
ENGINEER/INSPECTOR TO REVIEW FORMS BEFORE
POURING CONCRETE. CONCRETE POURED WITHOUT
FORM APPROVAL IS SUBJECT TO REMOVAL AND
REPLACEMENT AT THE CONTRACTOR'S EXPENSE.

EROSION CONTROL KEY NOTES

- E1 INSTALL SILT SACK IN CATCH BASIN AND STRAW
WATTLES IN FRONT OF CURB OPENING.
- E2 INSTALL BIOBAGS IN GUTTER.



PLAN VIEW AND SECTIONS

**DIVISION STREET AND MANSFIELD STREET
GRIND AND INLAY**

LOCATED IN SECTIONS 31AD AND 31DA, T2S, R1W, W.M.
IN THE CITY OF SHERWOOD, WASHINGTON COUNTY,
STATE OF OREGON

CITY OF SHERWOOD
ENGINEERING DEPARTMENT
2245 SW
SHERWOOD, OREGON 97140
PHONE: (503) 825-3308
FAX: (503) 825-3322
E-MAIL: engineering@sherwoodoregon.gov

REGISTERED PROFESSIONAL ENGINEER
1777 W. 11th St.
Sherwood, Oregon 97140
CIVIL
EXPIRES: 12-31-21

DESIGNED BY:	CCC
DRAWN BY:	CCC
CHECKED BY:	AS & RS
FULL SIZE SCALE:	1"=30'
DATE:	SEPTEMBER, 2021
SUNSET_SHEET3.DWG	

JOB NO. _____

SHEET NO. **3**

OF **4**

REVISIONS

NOTES:

- WHEN RAINFALL AND RUNOFF OCCURS, A KNOWLEDGEABLE AND EXPERIENCED PERSON IN THE PRINCIPLES, PRACTICES, INSTALLATION, AND MAINTENANCE OF EROSION AND SEDIMENT CONTROLS WHO WORKS FOR THE PERMITTEE MUST PROVIDE DAILY INSPECTIONS OF THE EROSION AND SEDIMENT CONTROLS AND DISCHARGE OUTFALLS.
- CONSTRUCTION ACTIVITIES MUST AVOID OR MINIMIZE EXCAVATION AND CREATION OF BARE GROUND FROM OCTOBER 1 THROUGH MAY 31ST EACH YEAR.
- DURING WET WEATHER PERIODS, TEMPORARY STABILIZATION OF THE SITE MUST OCCUR AT THE END OF EACH WORK DAY.
- SEDIMENT CONTROLS MUST BE INSTALLED AND MAINTAINED ON ALL DOWN GRADIENT SIDES OF THE CONSTRUCTION SITE AT ALL TIMES DURING CONSTRUCTION. THEY MUST REMAIN IN PLACE UNTIL PERMANENT VEGETATION OR OTHER PERMANENT COVERING OF EXPOSED SOIL IS ESTABLISHED.
- ALL ACTIVE INLETS MUST HAVE SEDIMENT CONTROLS INSTALLED AND MAINTAINED AT ALL TIMES DURING CONSTRUCTION.
- SIGNIFICANT AMOUNTS OF SEDIMENT THAT LEAVES THE SITE MUST BE CLEANED UP WITHIN 24 HOURS AND PLACED BACK ON THE SITE AND STABILIZED OR PROPERLY DISPOSED. THE CAUSE OF THE SEDIMENT RELEASE MUST BE FOUND AND PREVENTED FROM CAUSING A RECURRENCE OF THE DISCHARGE WITHIN THE SAME 24 HOURS. ANY IN-STREAM CLEAN UP OF SEDIMENT SHALL BE PERFORMED ACCORDING TO THE OREGON DEPARTMENT OF STATE LANDS REQUIRED TIME FRAME.
- SEDIMENT MUST NOT BE INTENTIONALLY WASHED INTO STORM SEWERS, DRAINAGEWAYS, OR WATER BODIES.
- SEDIMENT MUST BE REMOVED FROM BEHIND ALL SEDIMENT CONTROL MEASURES WHEN IT HAS REACHED A HEIGHT OF 1/3-RD THE BARRIER HEIGHT AND PRIOR TO THE CONTROL MEASURES REMOVAL.
- CLEANING OF ALL STRUCTURES WITH SUMPS MUST OCCUR WHEN THE SEDIMENT RETENTION CAPACITY HAS BEEN REDUCED BY 50% AND AT COMPLETION OF PROJECT.
- ANY USE OF TOXIC OR OTHER HAZARDOUS MATERIALS MUST INCLUDE PROPER STORAGE, APPLICATION, AND DISPOSAL.
- THE PERMITTEE MUST PROPERLY MANAGE HAZARDOUS WASTES, USED OILS, CONTAMINATED SOILS, CONCRETE WASTE, SANITARY WASTE, LIQUID WASTE, OR OTHER TOXIC SUBSTANCES DISCOVERED OR GENERATED DURING CONSTRUCTION.
- THE APPLICATION RATE OF FERTILIZERS USED TO REESTABLISH VEGETATION MUST FOLLOW MANUFACTURER'S RECOMMENDATIONS. NUTRIENT RELEASES FROM FERTILIZERS TO SURFACE WATERS MUST BE MINIMIZED. TIME RELEASE FERTILIZERS SHOULD BE USED AND CARE SHOULD BE MADE IN APPLICATION OF FERTILIZERS WITHIN ANY WATER WAY RIPARIAN ZONE.
- OWNER OR DESIGNATED PERSON SHALL BE RESPONSIBLE FOR PROPER INSTALLATION AND MAINTENANCE OF ALL EROSION AND SEDIMENT CONTROL MEASURES, IN ACCORDANCE WITH CURRENT CLEAN WATER SERVICES STANDARDS AND STATE, AND FEDERAL REGULATIONS.
- PRIOR TO ANY LAND DISTURBING ACTIVITIES, THE BOUNDARIES OF THE CLEARING LIMITS, VEGETATED BUFFERS, AND ANY SENSITIVE AREAS SHOWN ON THIS PLAN SHALL BE CLEARLY DELINEATED IN THE FIELD. UNLESS OTHERWISE APPROVED, NO DISTURBANCE IS PERMITTED BEYOND THE CLEARING LIMITS. THE OWNER/PERMITTEE MUST MAINTAIN THE DELINEATION FOR THE DURATION OF THE PROJECT. NOTE: VEGETATED CORRIDORS TO BE DELINEATED WITH ORANGE CONSTRUCTION FENCE OR APPROVED EQUAL.
- PRIOR TO ANY LAND DISTURBING ACTIVITIES, THE BMPs THAT MUST BE INSTALLED ARE GRAVEL CONSTRUCTION ENTRANCE, PERIMETER SEDIMENT CONTROL, AND INLET PROTECTION. THESE BMPs MUST BE MAINTAINED FOR THE DURATION OF THE PROJECT.
- IF VEGETATIVE SEED MIXES ARE SPECIFIED, SEEDING MUST TAKE PLACE NO LATER THAN SEPTEMBER 1ST, THE TYPE AND PERCENTAGES OF SEED IN THE MIX ARE AS IDENTIFIED ON THE PLANS OR AS SPECIFIED BY THE DESIGN ENGINEER.
- WATER-TIGHT TRUCKS MUST BE USED TO TRANSPORT SATURATED SOILS FROM THE CONSTRUCTION SITE, AN APPROVED EQUIVALENT IS TO DRAIN THE SOIL ON SITE AT A DESIGNATED LOCATION USING APPROPRIATE BMPs. SOIL MUST BE DRAINED SUFFICIENTLY FOR MINIMAL SPILLAGE.
- ALL PUMPING OF SEDIMENT LADEN WATER MUST BE DISCHARGED OVER AN UNDISTURBED, PREFERABLY VEGETATED AREA, AND THROUGH A SEDIMENT CONTROL BMP (I.E. FILTER BAG).
- THE ESC PLAN MUST BE KEPT ON SITE. ALL MEASURES SHOWN ON THE PLAN MUST BE INSTALLED PROPERLY TO ENSURE THAT SEDIMENT LADEN WATER DOES NOT ENTER A SURFACE WATER SYSTEM, ROADWAY, OR OTHER PROPERTIES.
- THE ESC MEASURES SHOWN ON THIS PLAN ARE THE MINIMUM REQUIREMENTS FOR ANTICIPATED SITE CONDITIONS. DURING THE CONSTRUCTION PERIOD, THESE MEASURES SHALL BE UPGRADED AS NEEDED TO MAINTAIN COMPLIANCE WITH ALL REGULATIONS.
- WRITTEN ESC LOGS ARE SUGGESTED TO BE MAINTAINED ON SITE AND AVAILABLE TO DISTRICT INSPECTORS UPON REQUEST.
- IN AREAS SUBJECT TO WIND EROSION, APPROPRIATE BMPs MUST BE USED, WHICH MAY INCLUDE THE APPLICATION OF FINE WATER SPRAYING, PLASTIC SHEETING, MULCHING, OR OTHER APPROVED MEASURES.
- ALL EXPOSED SOILS MUST BE COVERED, AT END OF BUSINESS DAY, DURING WET WEATHER PERIOD, FROM OCTOBER 1 - MAY 31.

STANDARD EROSION CONTROL NOTES FOR SITES LESS THAN 1 ACRE
DRAWING NO. 945 REVISED 10-31-19

NOTES:

- VALVE BOX NOT TO REST ON OPERATING ASSEMBLY
- OPERATOR EXTENSION REQUIRED WHEN VALVE NUT IS DEEPER THAN 3 FEET FROM FINISHED GRADE
- CENTER VALVE BOX ON AXIS OF OPER NUT
- PROVIDE 24" SQUARE BY 4" THICK CONCRETE PAD AROUND VALVE BOX OUTSIDE OF PAVED AREAS
- VALVE BOX COVER SHALL BE A MINIMUM OF 2 1/2" IN LENGTH

STANDARD DRAWING TITLE	DRAWING NUMBER
TYPICAL GATE VALVE SETTING DETAIL	W-3
SCALE	DATE
N.T.S.	JUL '09

NOTES:

- ONLY ALLOWED USE OF APPLICATION IS ON CURB AND GUTTER INLETS.
- INSTALL WATTLE ALONG INLET WITH WATTLE EXTENDING A MIN OF 36" BEYOND INLET OPENINGS IN EACH DIRECTION.
- WATTLE MUST BE INSTALLED TIGHTLY AGAINST CURB. MAY REQUIRE ADDITIONAL MEASURES TO ENSURE WATTLE REMAINS TIGHT AGAINST CURB, SUCH AS USING ZIP TIES TO SECURE WATTLE TO INLET'S TRASH BARS OR USING SANDBAGS TO WEIGHT DOWN WATTLE.
- REPLACE WATTLE AS NECESSARY TO PREVENT SEDIMENT FROM ENTERING THE STORM SYSTEM.

CURB AND GUTTER INLET PROTECTION
DRAWING NO. 905 REVISED 10-31-19

NOTE:

- RECESSED CURB INLET CATCH BASINS MUST BE BLOCKED WHEN USING FILTER FABRIC INLET SACKS. SIZE OF FILTER FABRIC INLET SACKS TO BE DETERMINED BY MANUFACTURER.

FOR FURTHER INFORMATION ON DESIGN CRITERIA SEE CHAPTER 4 OF CLEAN WATER SERVICES EROSION PREVENTION AND SEDIMENT CONTROL PLANNING AND DESIGN MANUAL.

INLET PROTECTION TYPE 5
DRAWING NO. 920 REVISED 10-31-19

DETAILS

DIVISION STREET AND MANSFIELD STREET GRIND AND INLAY

LOCATED IN SECTIONS 31AD AND 31DA, T2S, R1W, W.M. IN THE CITY OF SHERWOOD, WASHINGTON COUNTY, STATE OF OREGON

NOTES:

- VERTICAL CURB TO BE USED AT MEDIANS AND MEDIAN PLANTING STRIPS, OR IN REPLACEMENT OF DAMAGED EXISTING VERTICAL CURBS.
- CONCRETE SHALL BE COMMERCIAL MIX, MIN. COMPRESSIVE STRENGTH OF 3,300 PSI AT 28 DAYS.
- EXPANSION JOINTS TO BE PROVIDED: AT POINT OF TANGENCY OF THE CURB, AT EACH JOINT, AT THE SIDE OF INLET STRUCTURES, AT THE ENDS OF DRIVEWAYS AND AT LOCATIONS NECESSARY TO LIMIT SPACING TO 45 FEET.
- MATERIAL TO BE PRE-MOLDED, ASPHALT IMPREGNATED, NON-EXTRUDING, WITH A THICKNESS OF 1/2 INCH.
- CONTRACTION JOINTS SHALL NOT BE SPACED MORE THAN 15 FEET AND SHALL BE 1 1/2" IN DEPTH.
- BASE ROCK: 3/4"-0", COMPACTED TO 95% MAX DENSITY. BASE ROCK SHALL BE TO SUBGRADE OF STREET STRUCTURE OR 6" IN DEPTH, WHICHEVER IS GREATER.

STANDARD DRAWING TITLE	DRAWING NUMBER
VERTICAL CURB	RD-21
SCALE	DATE
N.T.S.	MAR '16

NOTES:

- CONCRETE SHALL BE COMMERCIAL MIX, MIN. COMPRESSIVE STRENGTH OF 3,300 PSI @ 28 DAYS, WITH A 4" MAX SLUMP.
- SIDEWALK PANELS TO BE SQUARE (6' LONG x 6' WIDE TYP.).
- EXPANSION JOINTS TO BE PLACED AT SIDES OF DRIVEWAY APPROACHES, UTILITY VAULTS, CURB RAMPS, AND/OR POINTS OF TANGENCY IN CURBS AS SHOWN ON THE STANDARD DRAWINGS FOR SIDEWALK RAMPS, AND AT SPACING NOT TO EXCEED 45'.
- FOR SIDEWALKS ADJACENT TO THE CURB AND POURED AT THE SAME TIME AS THE CURB, THE JOINT BETWEEN THEM SHALL BE A TROMELED JOINT WITH A MINIMUM 1/2" RADIUS.
- SIDEWALKS SHALL HAVE A MINIMUM THICKNESS OF 4". IF MOUNTABLE CURB IS USED, OR IF SIDEWALK IS INTENDED AS PORTION OF A RESIDENTIAL DRIVEWAY IT SHALL HAVE A 6" MINIMUM THICKNESS, COMMERCIAL 8".
- CONCRETE SHALL HAVE A BROOM FINISH, ALL JOINTS SHALL BE EDGED WITH 3" SHINE.
- WIDTH OF PLANTER STRIP AND SIDEWALK IS MEASURED FROM FACE OF CURB.
- IF DRAIN BLOCKOUTS IN CURBS ARE APPROVED, THEY SHALL BE EXTENDED PERPENDICULAR TO CURB TO 1" PAST BACK OF SIDEWALK WITH A 3" DIAMETER ADS PIPE. CONTRACTION JOINT SHALL BE PLACE OVER PIPE.

STANDARD DRAWING TITLE	DRAWING NUMBER
SIDEWALK DETAIL	RD-26
SCALE	DATE
N.T.S.	MAR '16

NOTES:

- PROJECT ENGINEER SHALL USE THIS DRAWING AS A GUIDE FOR DESIGNING RAMPS AND SHALL PREPARE A SITE SPECIFIC DRAWING FOR EACH RAMP.
- PROJECT ENGINEER SHALL VERIFY APPLICABILITY OF THIS DRAWING TO SPECIFIC LOCATIONS WITHIN THE PROJECT BEFORE USING IT AS A DESIGN GUIDE AND SHALL LOCATE EACH RAMP RELATIVE TO CROSSWALK OR STOP LINE.
- SIDEWALK RAMP GRADES SHALL MEET CURRENT ADA STANDARDS.
- PLANTER STRIP DETAIL - REFER TO ODOT STANDARD DRAWING RD 755 (SIDEWALK RAMP DETAIL).
- DETECTABLE WARNING SHALL BE TRUNCATED DOME TYPE, 24" LONG IN DIRECTION OF TRAVEL AND FULL WIDTH OF RAMP, WITH DOMES ALIGNED ON A SQUARE GRID WITH ITS GRIDLINES PARALLEL AND PERPENDICULAR TO THE CENTERLINE OF THE RAMP. COLOR OF DETECTABLE WARNING SHALL BE SAFETY YELLOW.
- CURB INLET OR CATCH BASIN SHALL NOT BE ALLOWED IN FRONT OF RAMP.
- CONCRETE SHALL BE A COMMERCIAL MIX, WITH A 28 DAY COMPRESSIVE STRENGTH OF 3300 PSI WITH A 4" MAX SLUMP.
- 3/4"-0" BASE ROCK SHALL BE COMPACTED TO 90% OF MAXIMUM DENSITY.
- BEVEL THE CURB CUT FROM GUTTER TO BACK OF CURB AT 8.33% (1:12) MAX.
- SCORE CONCRETE AT GRADE CHANGES, SURFACE TEXTURE CHANGES AND AT ALL OTHER POINTS SHOWN.
- CONCRETE SURFACE SHALL HAVE BROOM FINISH, AND EDGE ALL JOINTS.
- PROJECT ENGINEER SHALL ACCEPT FULL RESPONSIBILITY FOR CORRECTING ALL UNACCEPTABLE RAMP CONSTRUCTION RESULTING FROM APPLYING THIS DRAWING "AS IS" AND NOT PROVIDING A SITE-SPECIFIC DRAWING FOR EACH RAMP.

STANDARD DRAWING TITLE	DRAWING NUMBER
CURB-TIGHT CURB RETURN & RAMP DETAIL	RD-43
SCALE	DATE
N.T.S.	MAR '16

NOTES:

- PROJECT ENGINEER SHALL USE THIS DRAWING AS A GUIDE FOR DESIGNING RAMPS AND SHALL PREPARE A SITE SPECIFIC DRAWING FOR EACH RAMP.
- PROJECT ENGINEER SHALL VERIFY APPLICABILITY OF THIS DRAWING TO SPECIFIC LOCATIONS WITHIN THE PROJECT BEFORE USING IT AS A DESIGN GUIDE AND SHALL LOCATE EACH RAMP RELATIVE TO CROSSWALK OR STOP LINE.
- SIDEWALK RAMP GRADES SHALL MEET CURRENT ADA STANDARDS.
- DETECTABLE WARNING SHALL BE TRUNCATED DOME TYPE, 24" LONG IN DIRECTION OF TRAVEL AND FULL WIDTH OF RAMP, WITH DOMES ALIGNED ON A SQUARE GRID WITH ITS GRIDLINES PARALLEL AND PERPENDICULAR TO THE CENTERLINE OF THE RAMP. COLOR OF DETECTABLE WARNING SHALL BE SAFETY YELLOW.
- CURB INLET OR CATCH BASIN SHALL NOT BE ALLOWED IN FRONT OF RAMP.
- CONCRETE SHALL BE A COMMERCIAL MIX, WITH A 28 DAY COMPRESSIVE STRENGTH OF 3300 PSI, WITH A SLUMP RANGE BETWEEN 1 1/2" AND 3".
- 3/4"-0" BASE ROCK SHALL BE COMPACTED TO 90% OF MAXIMUM DENSITY.
- BEVEL THE CURB CUT FROM GUTTER TO BACK OF CURB AT 8.33% (1:12) MAX.
- SCORE CONCRETE AT GRADE CHANGES, SURFACE TEXTURE CHANGES AND AT ALL OTHER POINTS SHOWN.
- CONCRETE SURFACE SHALL HAVE BROOM FINISH, AND EDGE ALL JOINTS.
- PROJECT ENGINEER SHALL ACCEPT FULL RESPONSIBILITY FOR CORRECTING ALL UNACCEPTABLE RAMP CONSTRUCTION RESULTING FROM APPLYING THIS DRAWING "AS IS" AND NOT PROVIDING A SITE-SPECIFIC DRAWING FOR EACH RAMP.

STANDARD DRAWING TITLE	DRAWING NUMBER
DOUBLE CROSSING CURB RETURN & RAMP DETAIL	RD-44
SCALE	DATE
N.T.S.	MAR '16

CITY OF SHERWOOD ENGINEERING DEPARTMENT
22580 SW PINE STREET
SHERWOOD, OREGON 97140

PHONE: (503) 935-2309
FAX: (503) 625-0629
E-MAIL: engineering@sherwoodoregon.gov

EXPIRES: 12-31-21

DESIGNED BY: CCC
DRAWN BY: CCC
CHECKED BY: AS & RS
FULL SIZE SCALE: AS NOTED
DATE: SEPTEMBER, 2021
SUNSET_SHEETS

REVISIONS

NO.	DESCRIPTION
1	
2	
3	
4	
5	
6	
7	
8	
9	
10	
11	
12	
13	
14	
15	
16	
17	
18	
19	
20	
21	
22	
23	
24	
25	
26	
27	
28	
29	
30	
31	
32	
33	
34	
35	
36	
37	
38	
39	
40	
41	
42	
43	
44	
45	
46	
47	
48	
49	
50	

JOB NO. _____

SHEET NO. **4**

OF 4