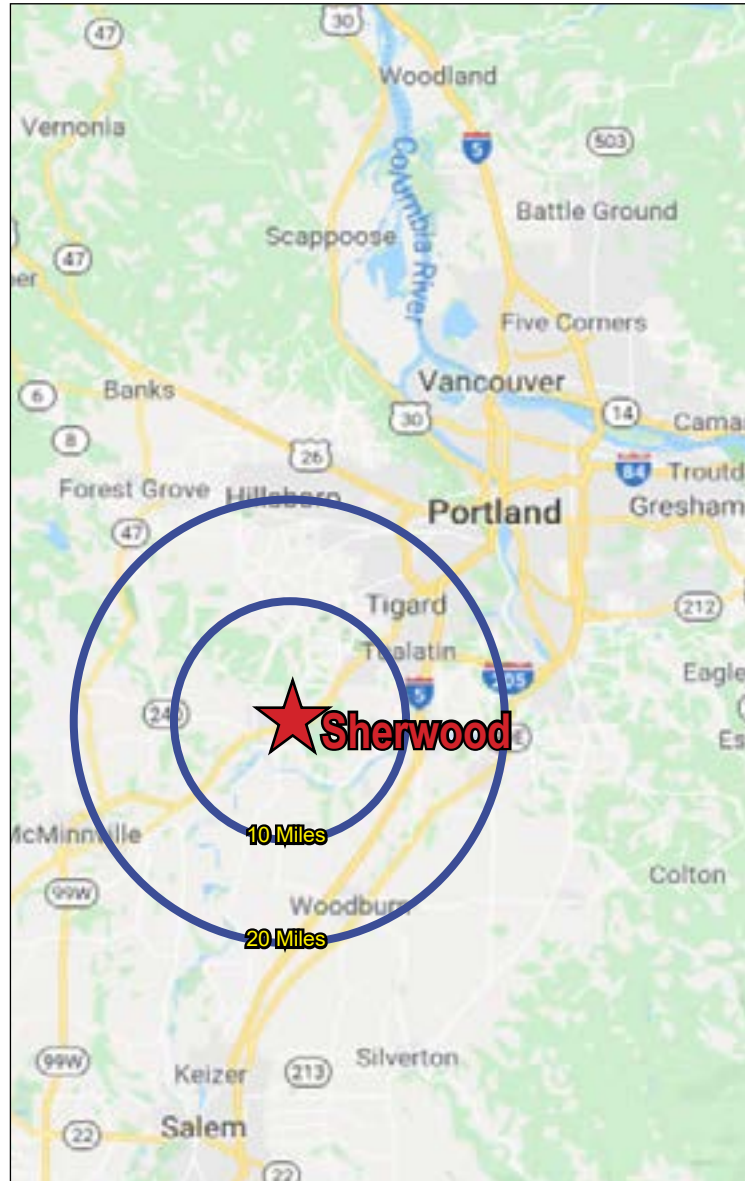


FOR SALE



About Sherwood

The city of Sherwood has a 5-mile population of 121,000 and is one of the fastest growing cities in the region with the largest high school in Oregon under construction less than one-quarter mile away. Strategically located, it is the southwest Portland link to the western Willamette Valley.

General Commercial Uses:

- Hotel, Restaurants
- Retail Trade
- Business & Professional Offices
- Medical, Dental, Veterinarian

For More Information:

City of Sherwood
www.SherwoodOregon.com

City of Sherwood Municipal Code Permitted Uses
https://library.municode.com/or/sherwood/codes/code_of_ordinances?nodeId=TIT16ZOCODECO_DIVIIAUSDE_CH16.22COLAUSD1

CONTACT US

CAPACITY COMMERCIAL GROUP 805 SW Broadway, Suite 700 Portland, OR | 97205
503.326.9000 | info@capacitycommercial.com | www.capacitycommercial.com

SCOTT MILLER

Senior Associate Broker

503.517.9872
scottm@capacitycommercial.com

ALLEN PATTERSON, SIOR

Senior Vice President

503.542.4347
allen@capacitycommercial.com

Proud member of:



The information contained herein is believed to be accurate but is not warranted as to its accuracy and may change or be updated without notice. Seller or Landlord makes no representation as to the environmental condition of the property and recommends purchaser's or tenant's independent investigation.

FOR SALE



22211 SW PACIFIC HWY | SHERWOOD OR 97140

- ±5.86 Acres - Highly Visible, Shovel-Ready
- Zoning: General Commercial, City of Sherwood
- Utilities: Fully Served
- Traffic Counts: 38,000 Trips/Day
- Direct Highway 99 Access: 2 Easements
- ±500' Frontage on Highway 99 with Electronic Billboard
- Gateway to the Wine Country
- Complete Demographics on Request
- Asking Price: \$5,615,755 (\$22/SF)

CONTACT US

CAPACITY COMMERCIAL GROUP 805 SW Broadway, Suite 700 Portland, OR | 97205
503.326.9000 | info@capacitycommercial.com | www.capacitycommercial.com

SCOTT MILLER

Senior Associate Broker

503.517.9872
scottm@capacitycommercial.com

ALLEN PATTERSON, SIOR

Senior Vice President

503.542.4347
allen@capacitycommercial.com

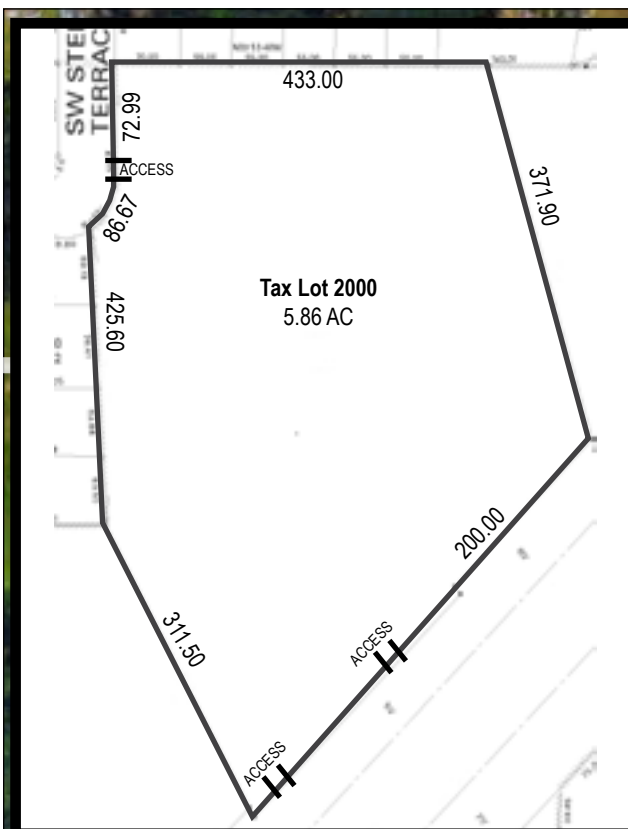
Proud member of:



The information contained herein is believed to be accurate but is not warranted as to its accuracy and may change or be updated without notice. Seller or Landlord makes no representation as to the environmental condition of the property and recommends purchaser's or tenant's independent investigation.

FOR SALE

±5.86 Acres Land with Frontage on Highway 99W



CONTACT THE CCG TEAM

SCOTT MILLER *Senior Associate Broker* 503.517.9872

ALLEN PATTERSON, SIOR *Senior Vice President* 503.542.4347