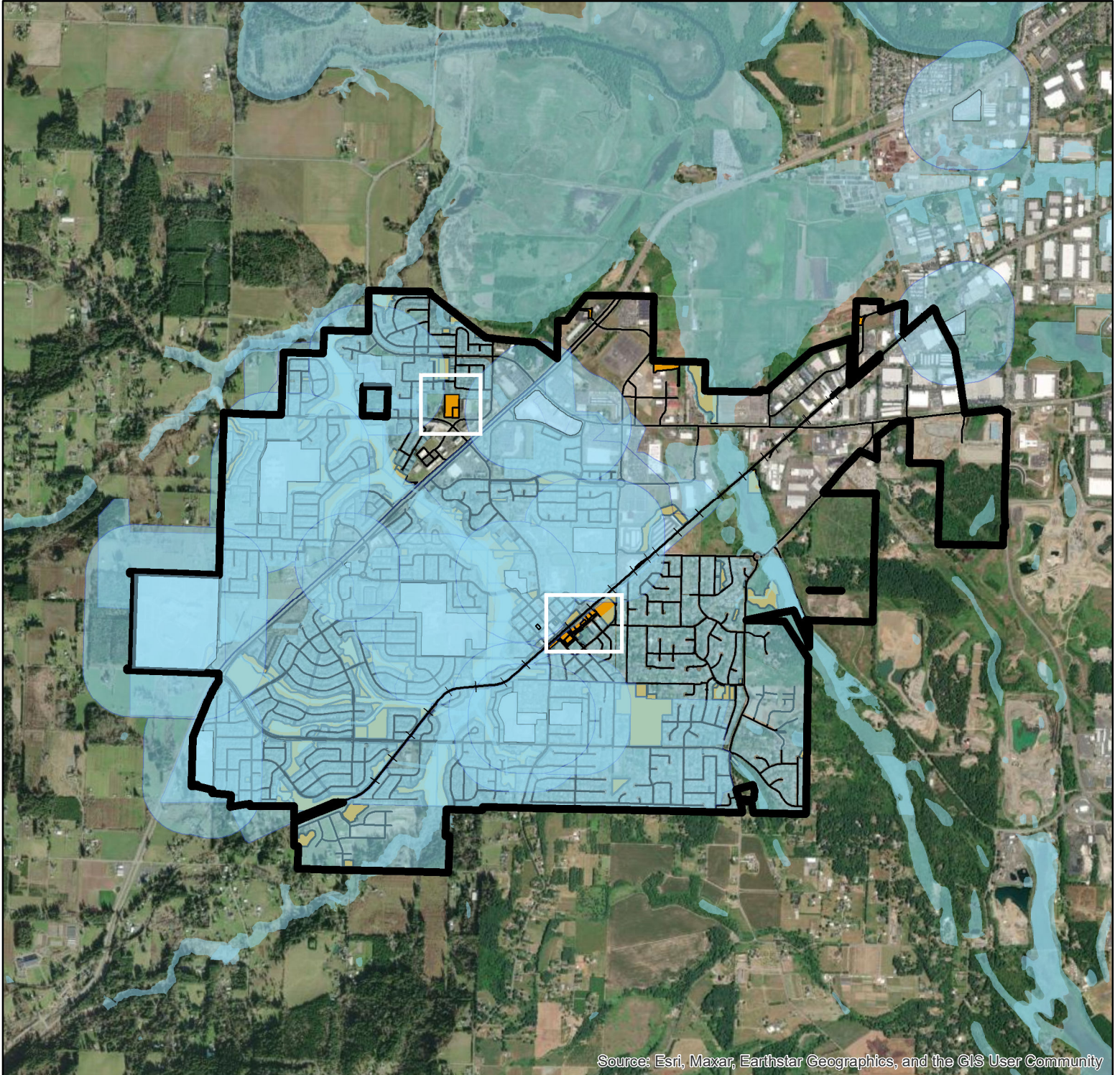





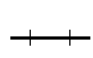
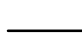

Vicinity Map

City of Sherwood - Merged Constraints



Source: Esri, Maxar, Earthstar Geographics, and the GIS User Community

Legend

-  City Limits
-  City Owned Properties
-  Major Arterial Highways
-  Sherwood_Railway
-  Streets
-  Constraints



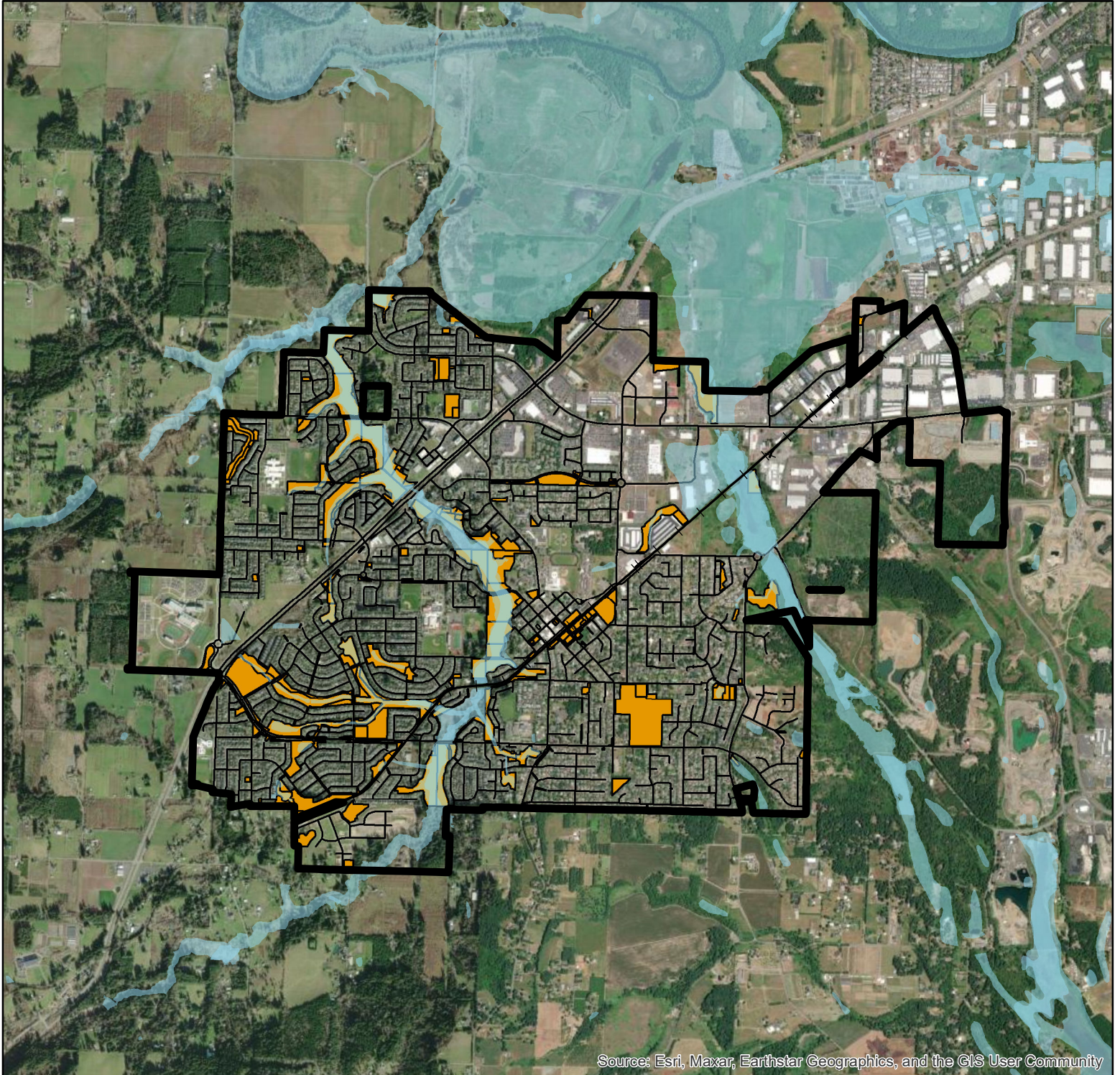
0 0.25 0.5 1 1.5 Miles

N



Vicinity Map

City of Sherwood - Environmental Constraints



Legend

- City Limits
- City Owned Properties
- Major Arterial Highways
- Sherwood_Railway
- Streets
- Constraints



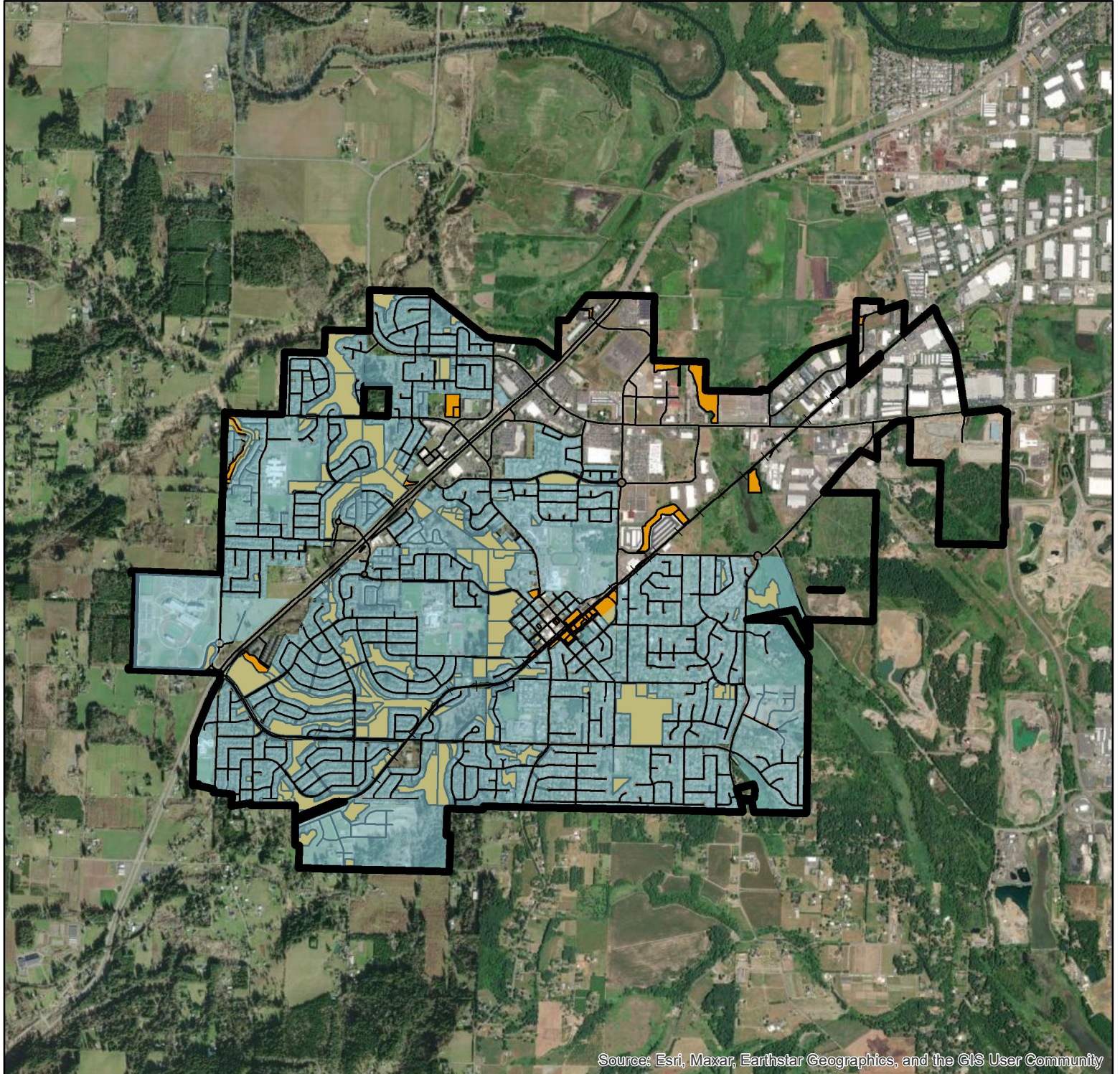
0 0.25 0.5 1 1.5 Miles

N




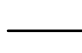



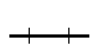
Vicinity Map

City of Sherwood - Zone District Constraints



Source: Esri, Maxar, Earthstar Geographics, and the GIS User Community

Legend

-  City Limits
-  Streets
-  City Owned Properties
-  Constraints
-  Major Arterial Highways
-  Sherwood_Railway



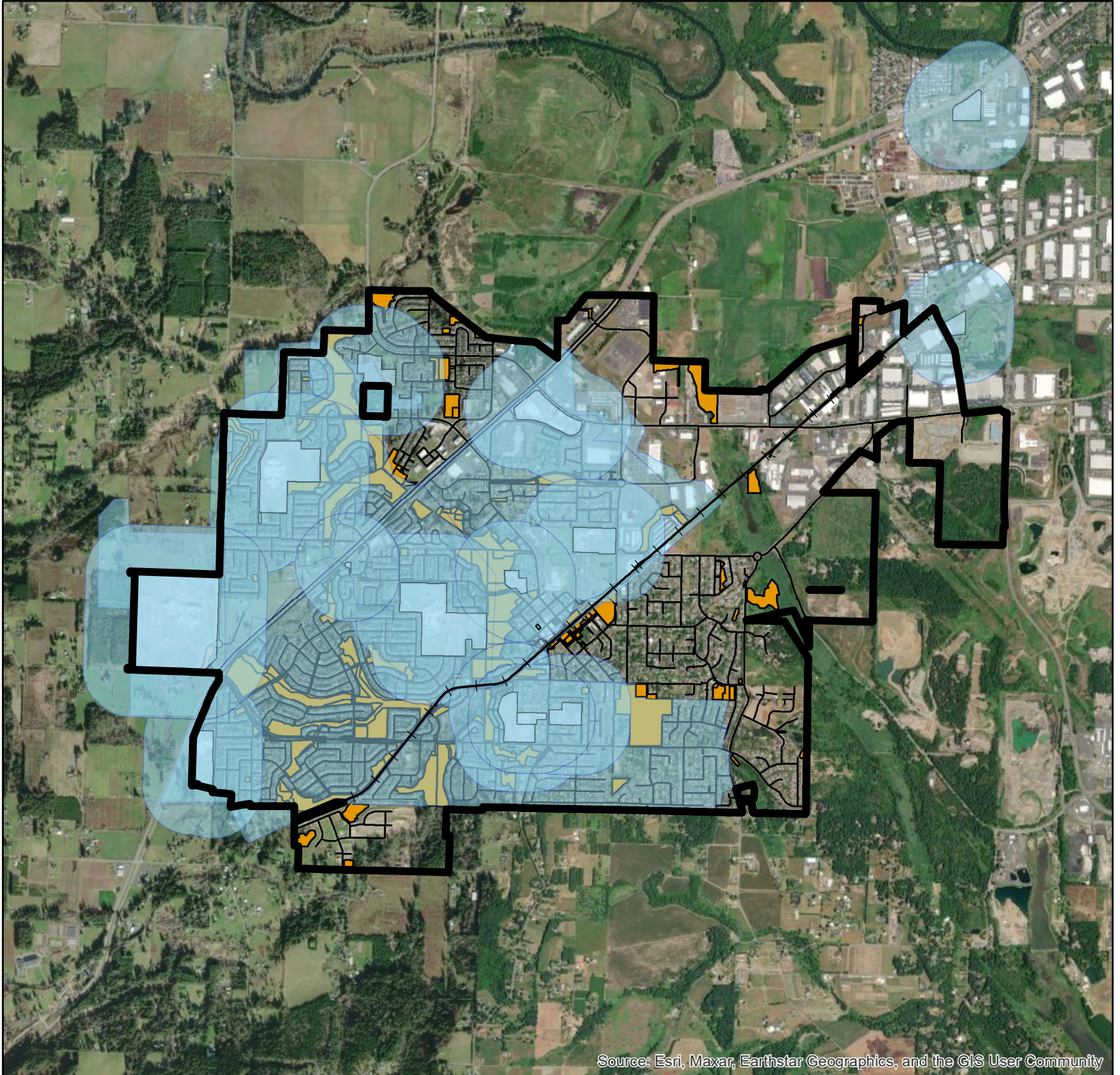
0 0.25 0.5 1 1.5 Miles

N






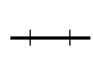
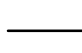

Vicinity Map

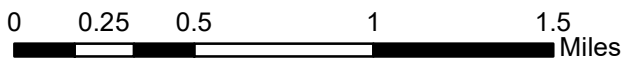
City of Sherwood - Educational Institution Constraint



Source: Esri, Maxar, Earthstar Geographics, and the GIS User Community

Legend

-  City Limits
-  City Owned Properties
-  Major Arterial Highways
-  Sherwood_Railway
-  Streets
-  Constraints



N

