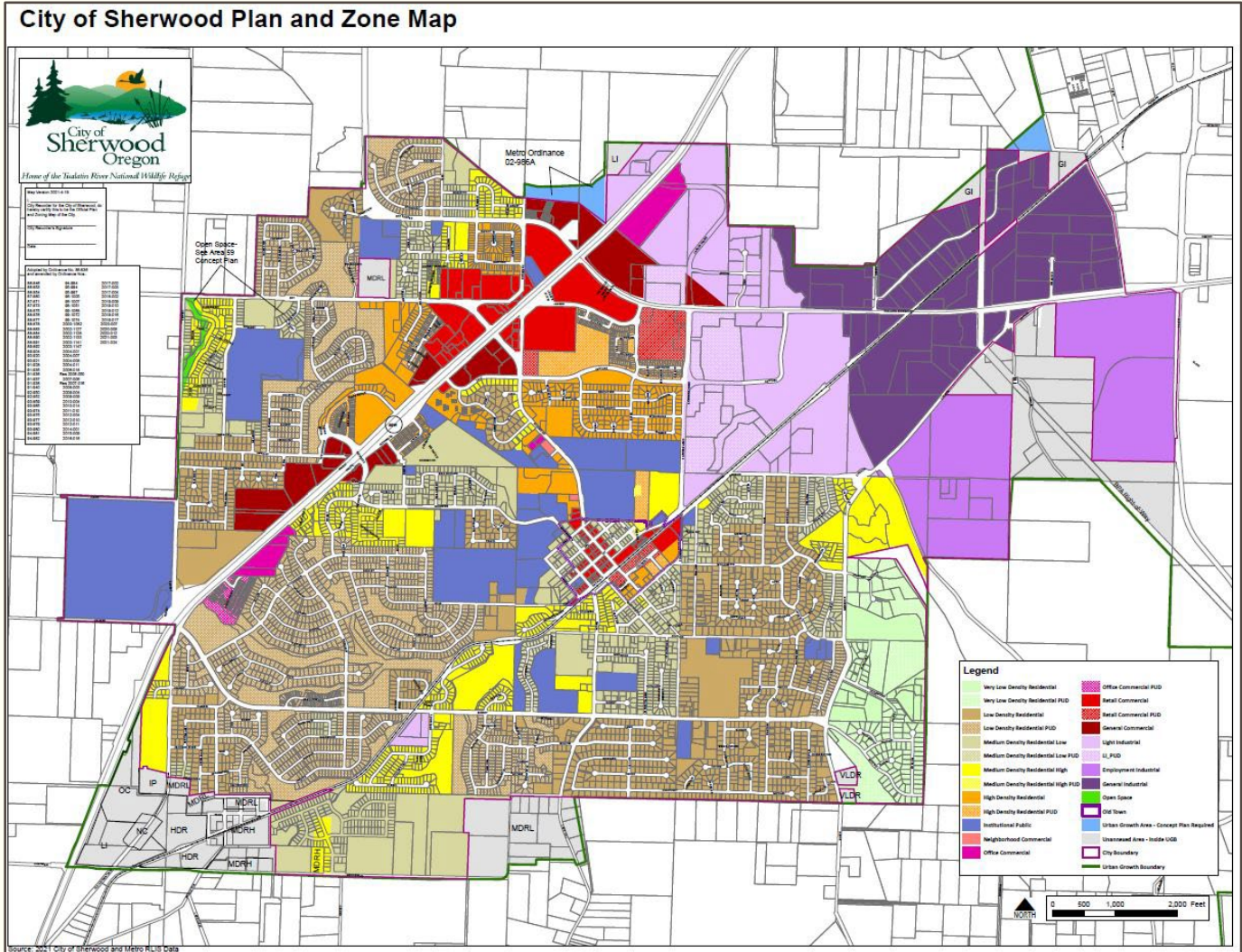


HB 3115 WORK SESSION



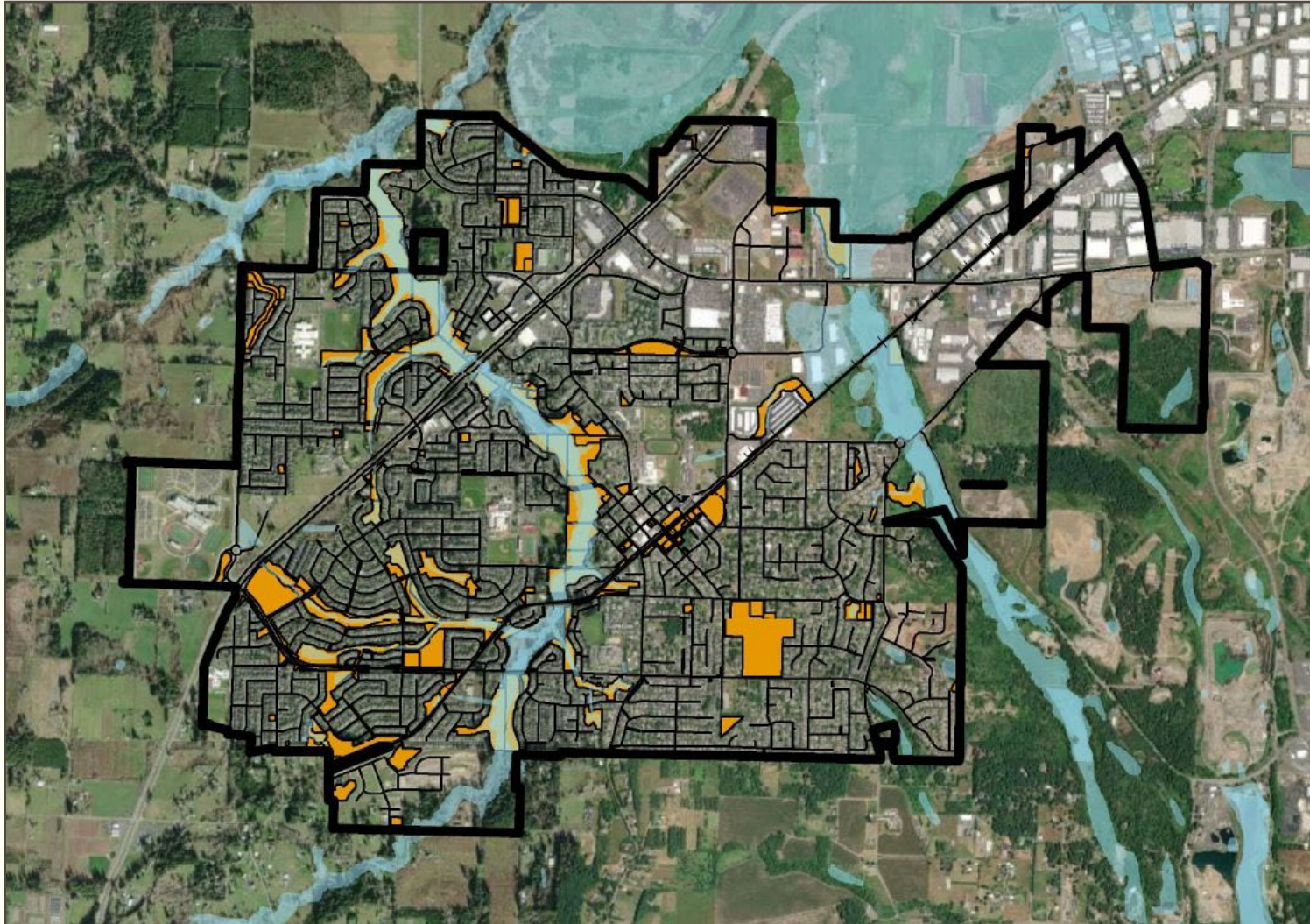
City Council Work Session
 May 16, 2023
 Eric Rutledge
 Community Development Director

HB 3115 WORK SESSION

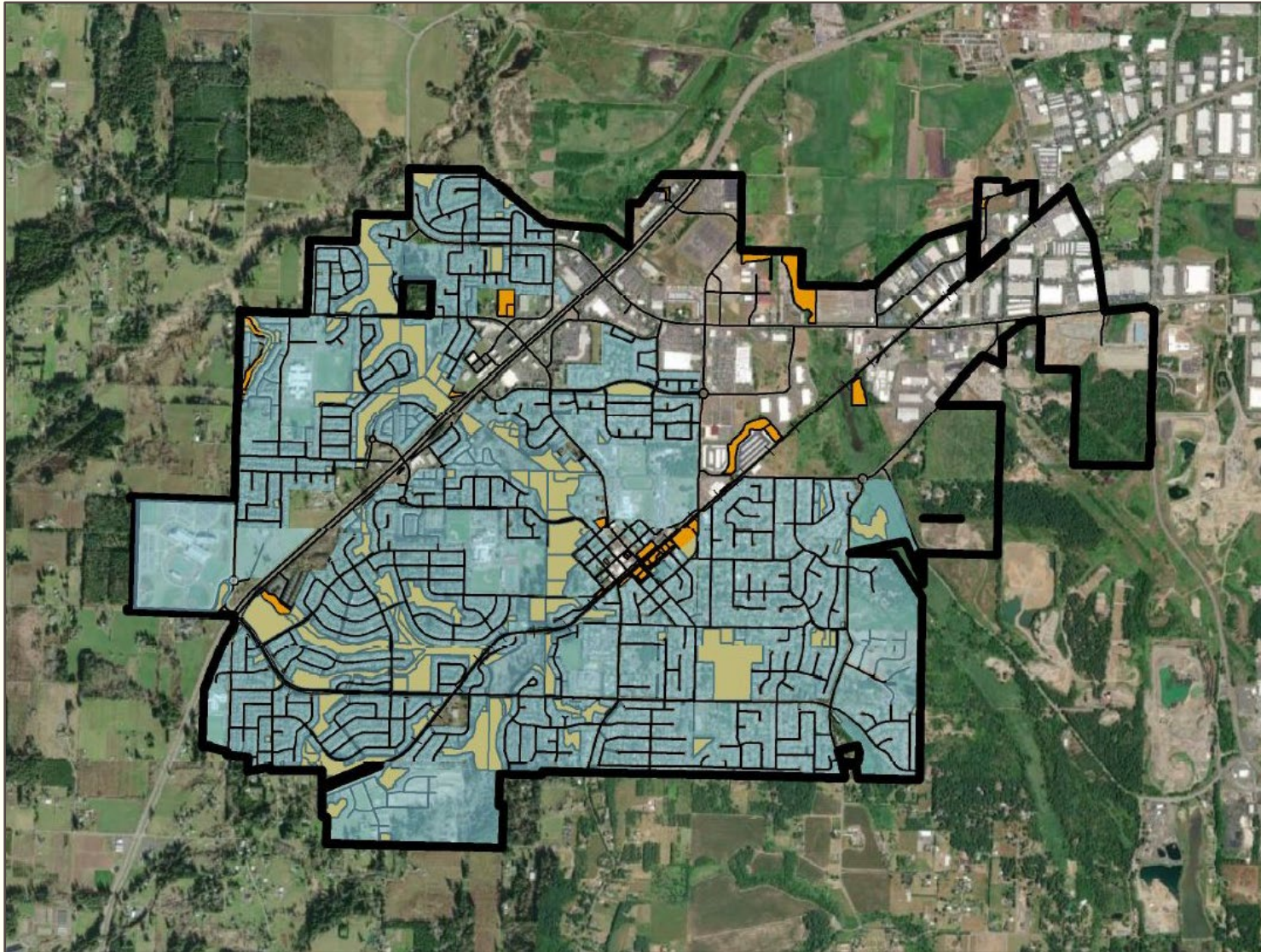
Currently Proposed Place Restrictions

- Institutional Public Zone
- Residential Zone and Residential Structures, plus 50 ft.
- Within 1,000 ft. of any school
- Within all Sherwood School District Walk Sheds
- Sensitive Areas regulated by Clean Water Services
- Any area that reduces sidewalk width below 5 ft.

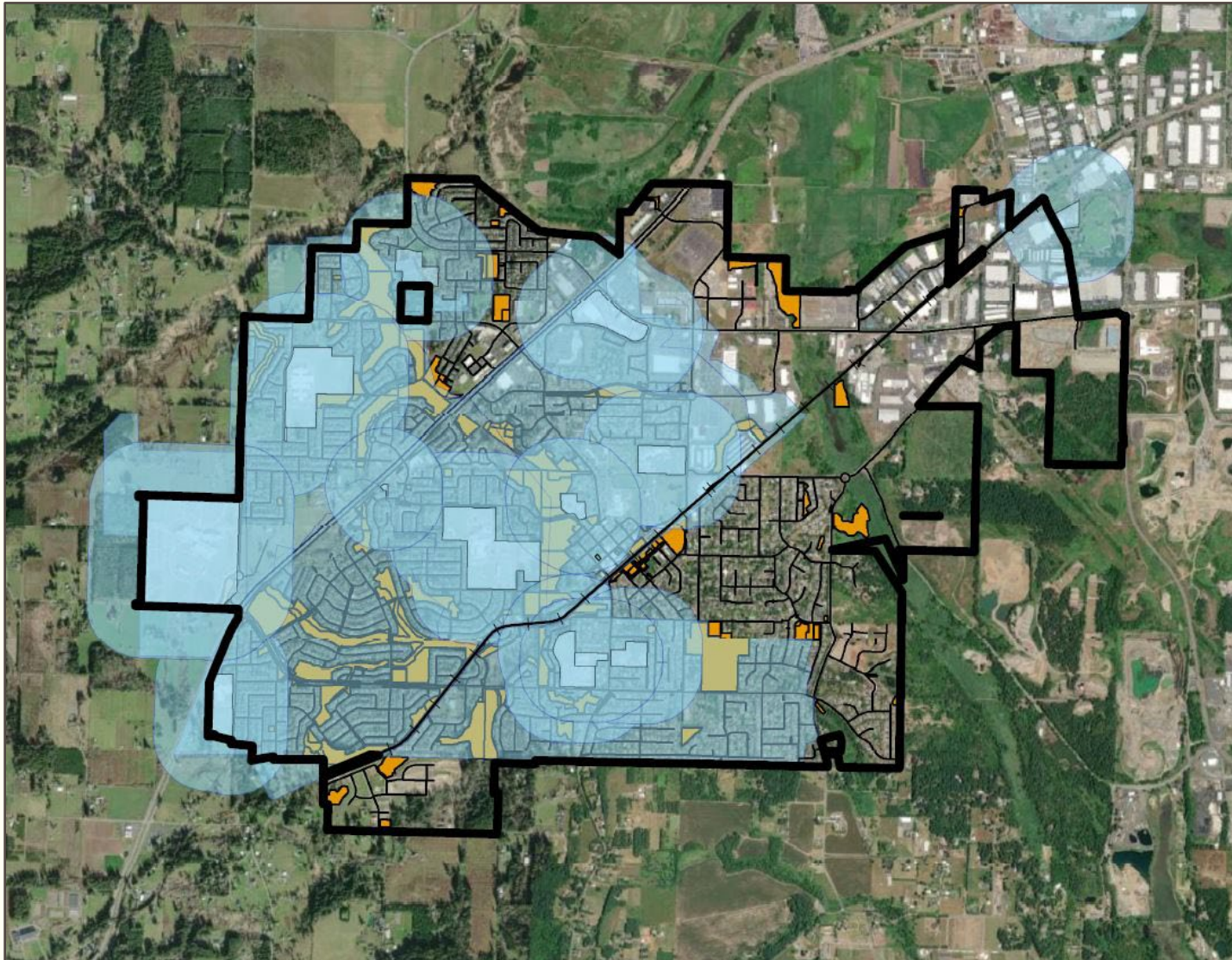
ENVIRONMENTAL RESTRICTIONS



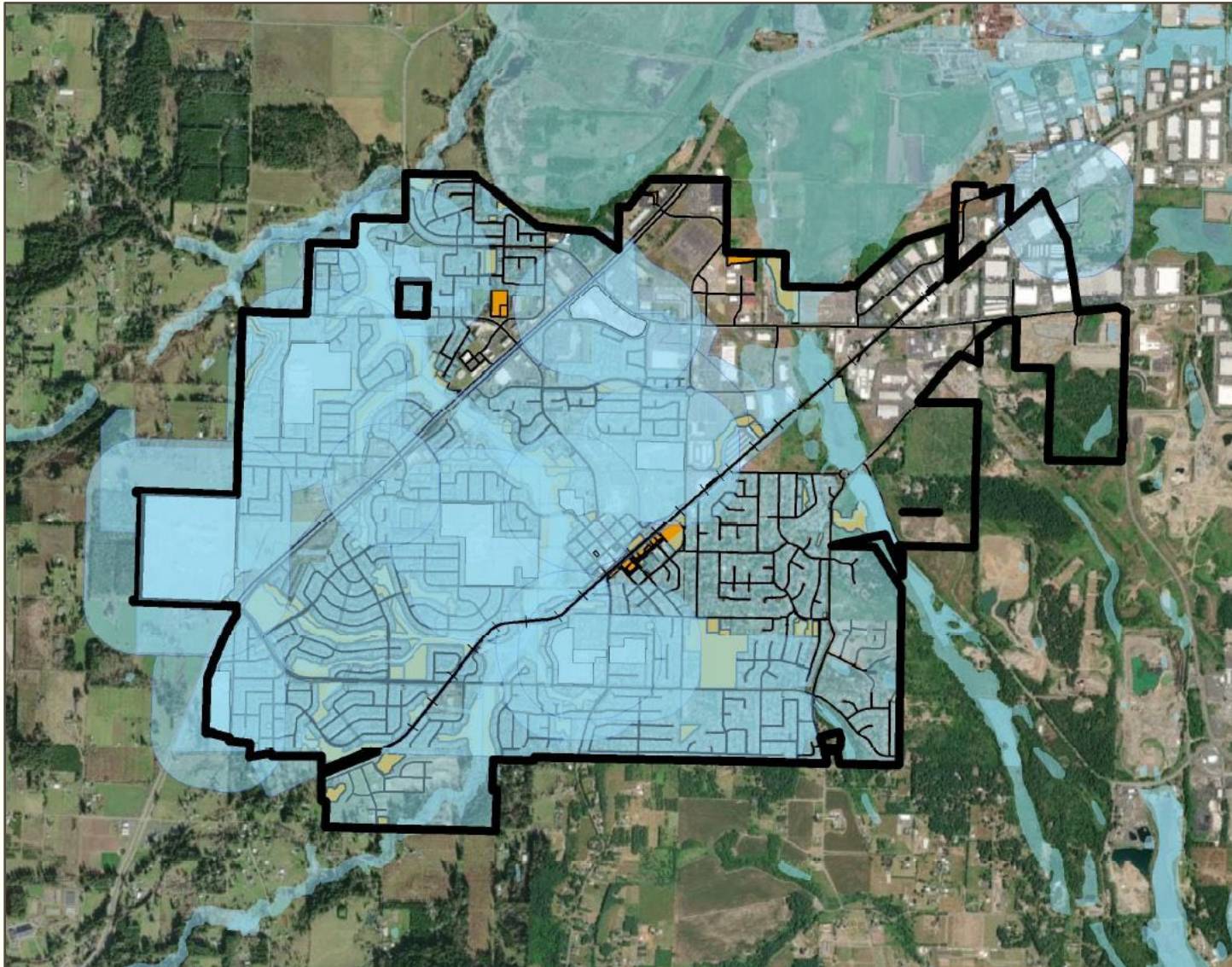
RESIDENTIAL AND INSTITUTIONAL / PUBLIC ZONES



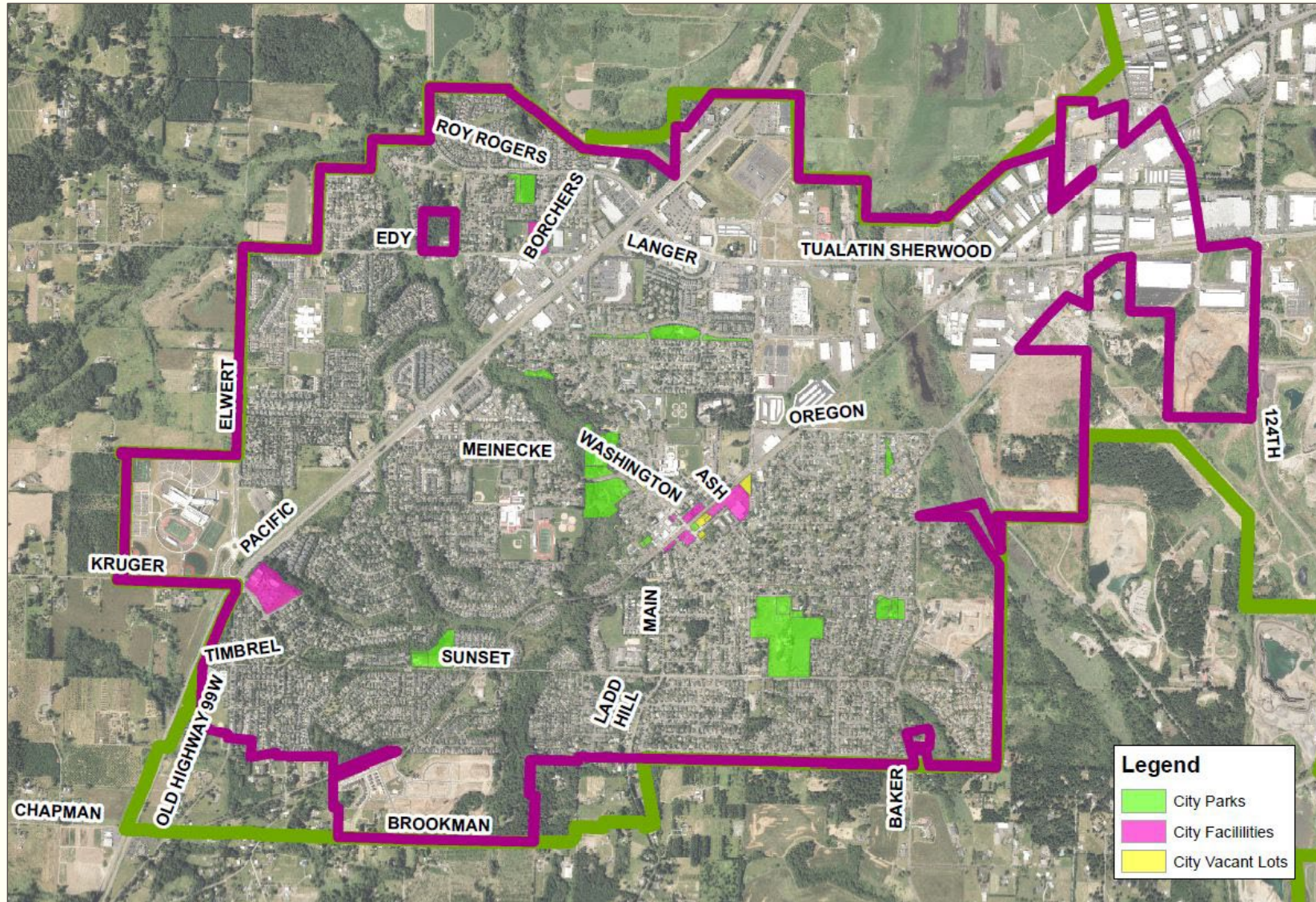
SCHOOL ZONE RESTRICTIONS



ALL RESTRICTIONS



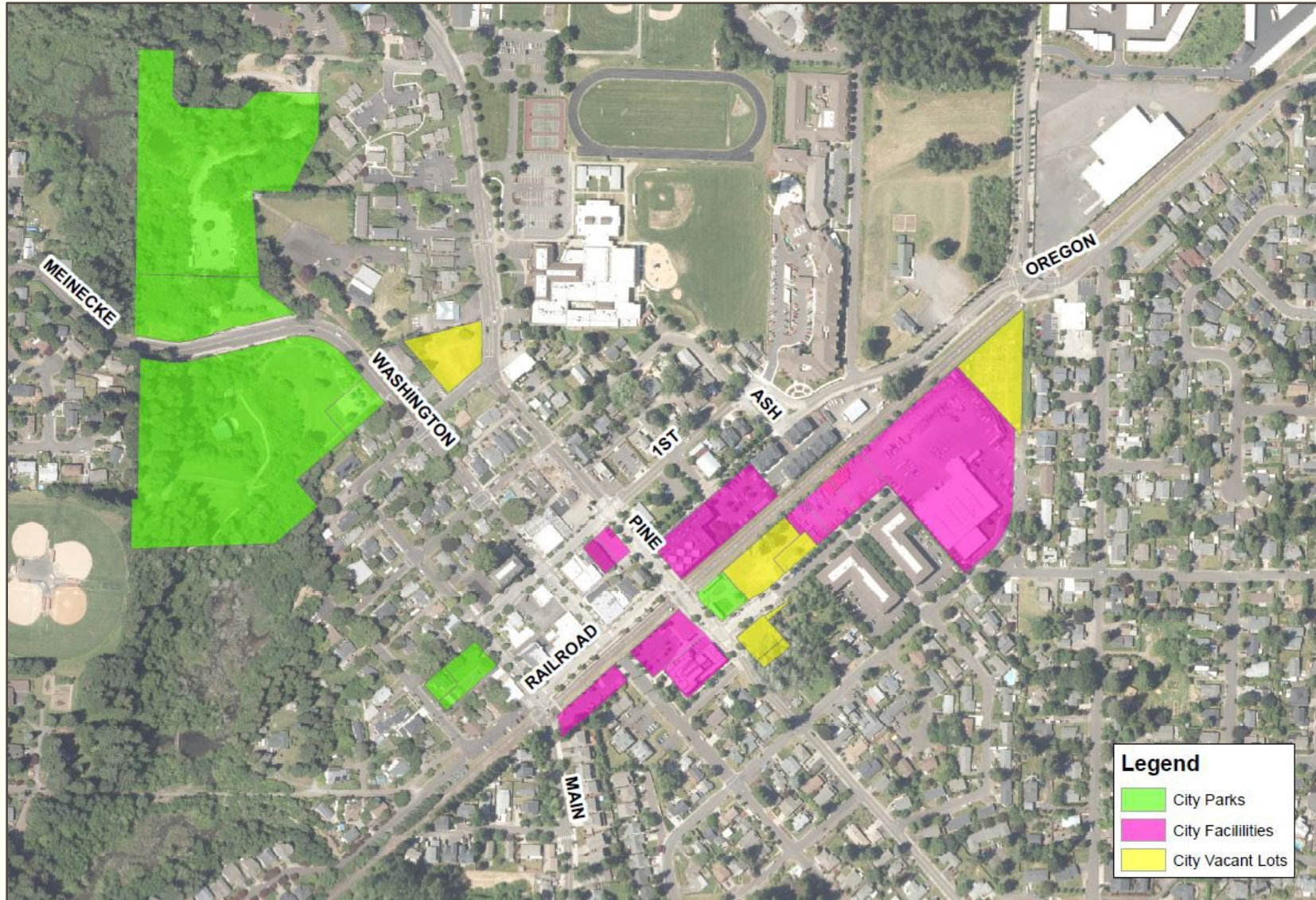
CITY-OWNED LOTS



Potential Locations

- One or more parks
- One or more city facility (Police, City Hall)

CITY OWNED LOTS



Old Town Potential Locations

- Cedar Creek Trail Parking Lot
- Old School Site
- Veterans Park
- City Hall
- Washington St. Park N Ride
- Columbia St. Lots